

# NO ENTRY

## FORESTRY REGULATION 2022 - SECTIONS 6 & 7

### CLOSURE OF PART BRAEMAR STATE FOREST

FORESTRY CORPORATION OF NEW SOUTH WALES HAS RESERVED THE AREA DESCRIBED BELOW AS 'THE CLOSED AREA' FOR THE EXCLUSIVE USE OF ITS CONTRACTORS, SUPPORT AND SUPERVISING STAFF CARRYING OUT HARVESTING AND ROADING OPERATIONS DURING THE PERIOD DESCRIBED BELOW AS 'THE CLOSURE PERIOD'.

THE ENTRY OF ALL PERSONS INTO THE CLOSED AREA DURING THE CLOSURE PERIOD, OTHER THAN PERSONS AUTHORISED IN WRITING BY THE FORESTRY CORPORATION OF NEW SOUTH WALES, IS HEREBY PROHIBITED.

PERSONS ENTERING INTO OR REMAINING IN THE CLOSED AREA DURING THE CLOSURE PERIOD WITHOUT FORESTRY CORPORATION OF NEW SOUTH WALES' PERMISSION ARE LIABLE TO PROSECUTION, MAXIMUM PENALTY \$2,200 PER OFFENCE.

#### DESCRIPTION OF THE CLOSED AREAS

That part of Braemar State Forest No. 9 enclosed by the boundary commencing near the intersection of the Powerline Easement and the Northern State Forest Boundary (marked Point 'A' on the map); then continuing in an clockwise direction around the closure area generally, in a south direction following the Powerline Easement Boundary to the intersection with the Rappville Rd (marked Point 'B' on the map); then generally, in a south-westerly direction following the Rappville Rd to the intersection with Eastern State Forest Boundary (marked Point 'C' on the map); then generally, in a north-westerly direction following the Eastern State Forest boundary to the intersection with the Powerline Easement (marked point 'A' on the map).

#### DESCRIPTION OF THE CLOSURE PERIOD

Between 7:00 am Monday 11<sup>th</sup> December 2023 and 6:00 pm Sunday 30<sup>th</sup> June 2024

BY ORDER OF FORESTRY CORPORATION OF NEW SOUTH WALES, by its delegate:



Dean Caton  
REGIONAL MANAGER - NORTHERN  
FCNSW COFFS HARBOUR



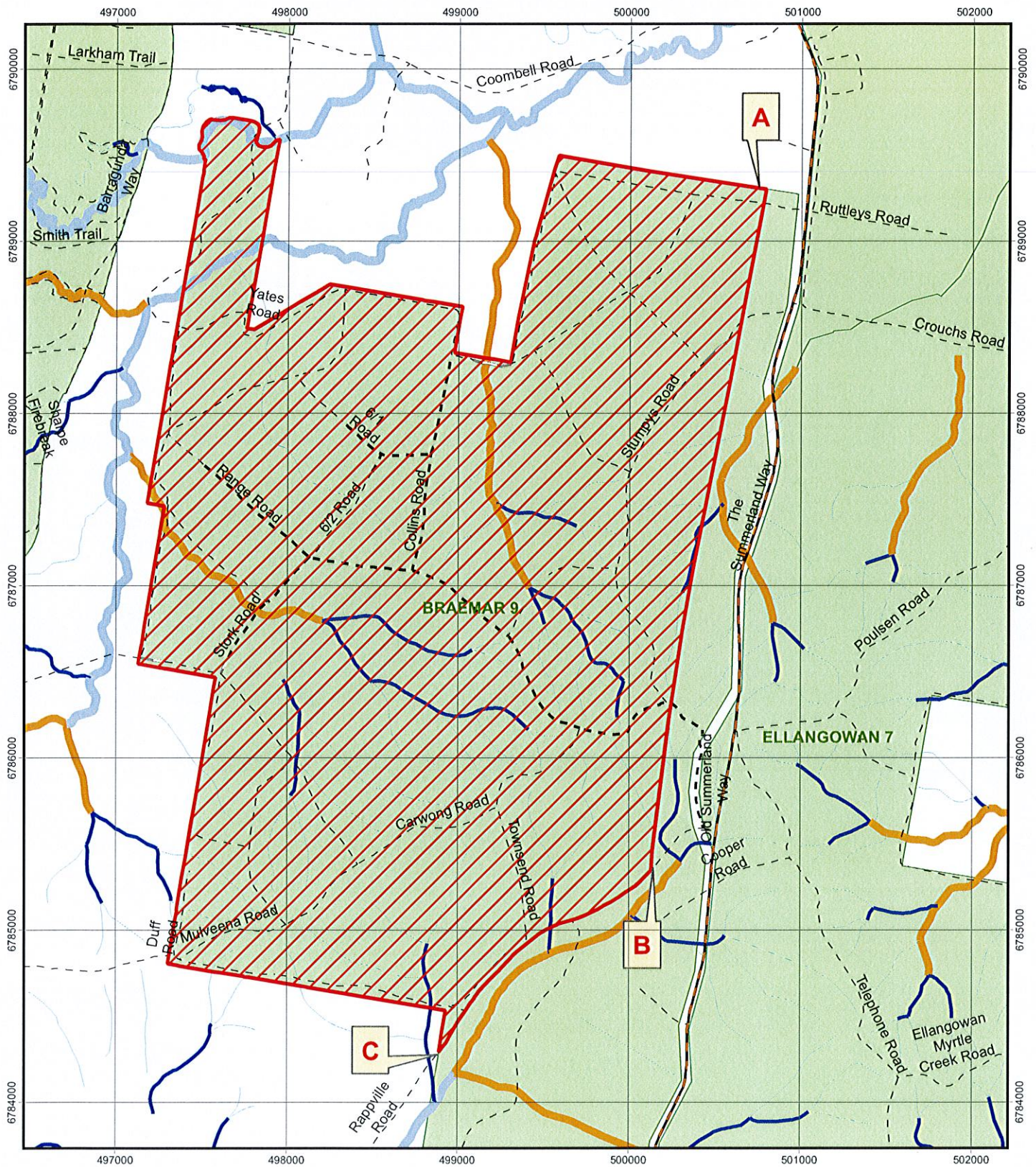


1:30,000

# CLOSED AREA

## FORESTRY REGULATION 2022 SECTION 6 & 7

### PART BRAEMAR STATE FOREST NO. 9



#### MAP FEATURES

- State Forest Boundary
- 1 Km Grid
- State Forest
- CLOSED AREA

#### Roads - Operational Class

- Sealed Road
- Haulage Road - Wet Weather
- Haulage Road - Dry Weather
- Fire Trail - trafficable

#### Drainage - LPI (ordered)

##### StreamOrderNo

- Stream Order 1
- Stream Order 2
- Stream Order 3
- Stream Order 4 PLUS
- To be assessed
- Unmapped Drainage

