

NO ENTRY

FORESTRY REGULATION 2022 - SECTION 7 CLOSURE OF PART CLOUDS CREEK STATE FOREST

FORESTRY CORPORATION OF NEW SOUTH WALES HAS RESERVED THE AREA DESCRIBED BELOW AS 'THE CLOSED AREA' FOR THE EXCLUSIVE USE OF ITS CONTRACTORS, SUPPORT AND SUPERVISING STAFF CARRYING OUT HARVESTING OPERATIONS DURING THE PERIOD DESCRIBED BELOW AS 'THE CLOSURE PERIOD'.

THE ENTRY OF ALL PERSONS INTO THE CLOSED AREA DURING THE CLOSURE PERIOD, OTHER THAN PERSONS AUTHORISED IN WRITING BY THE FORESTRY CORPORATION OF NEW SOUTH WALES, IS HEREBY PROHIBITED.

PERSONS ENTERING INTO OR REMAINING IN THE CLOSED AREA DURING THE CLOSURE PERIOD WITHOUT FORESTRY CORPORATION OF NEW SOUTH WALES' PERMISSION ARE LIABLE TO PROSECUTION, MAXIMUM PENALTY \$2,200.

DESCRIPTION OF THE CLOSED AREAS

That part of Clouds Creek State Forest no. 111 enclosed by the boundary commencing at the intersection of Blackbird Road and Green Gully Road (marked point 'A' on the map); then, moving in a clockwise direction around the closure area, in a generally southerly direction following Green Gully Road and Chapmans Plain Road to the intersection with the State Forest boundary (marked point 'B' on the map); then in a generally southerly direction following the State Forest boundary to the intersection with the Blicks River (marked point 'C' on the map); then following the Blicks River in a generally westerly direction to the intersection with the State Forest boundary (marked point 'D' on the map); then following the State Forest boundary and Horseshoe Firetrail in a generally northerly direction to the intersection with Wiriri Road (marked point 'E' on the map) **NB. Horseshoe Firetrail remains open**; then following Wiriri Road in a generally easterly direction to the intersection with the State Forest boundary (marked point 'F' on the map) **NB. Wiriri Road remains open to point 'F'**; then in a generally northerly direction along the State Forest boundary, Wiriri Creek, Marks Camp Road and Sheep Station Creek Road to the intersection with Boorook Road (marked point 'G' on the map); then generally in a north-easterly direction following Boorook Road and Blackbird Road to the intersection with Green Gully Road (marked point 'A' on the map).

DESCRIPTION OF THE CLOSURE PERIOD

Between 6:00 pm Friday 3rd March 2023 & 6:00 pm Sunday 31st December 2023.

BY ORDER OF FORESTRY CORPORATION OF NEW SOUTH WALES, by its delegate:



Andrew O'Brien
ACTING REGIONAL MANAGER - NORTHERN
FCNSW COFFS HARBOUR

FORESTRY CORPORATION OF NSW, HARDWOOD FORESTS DIVISION

CLOSED AREA - CLOUDS CREEK STATE FOREST

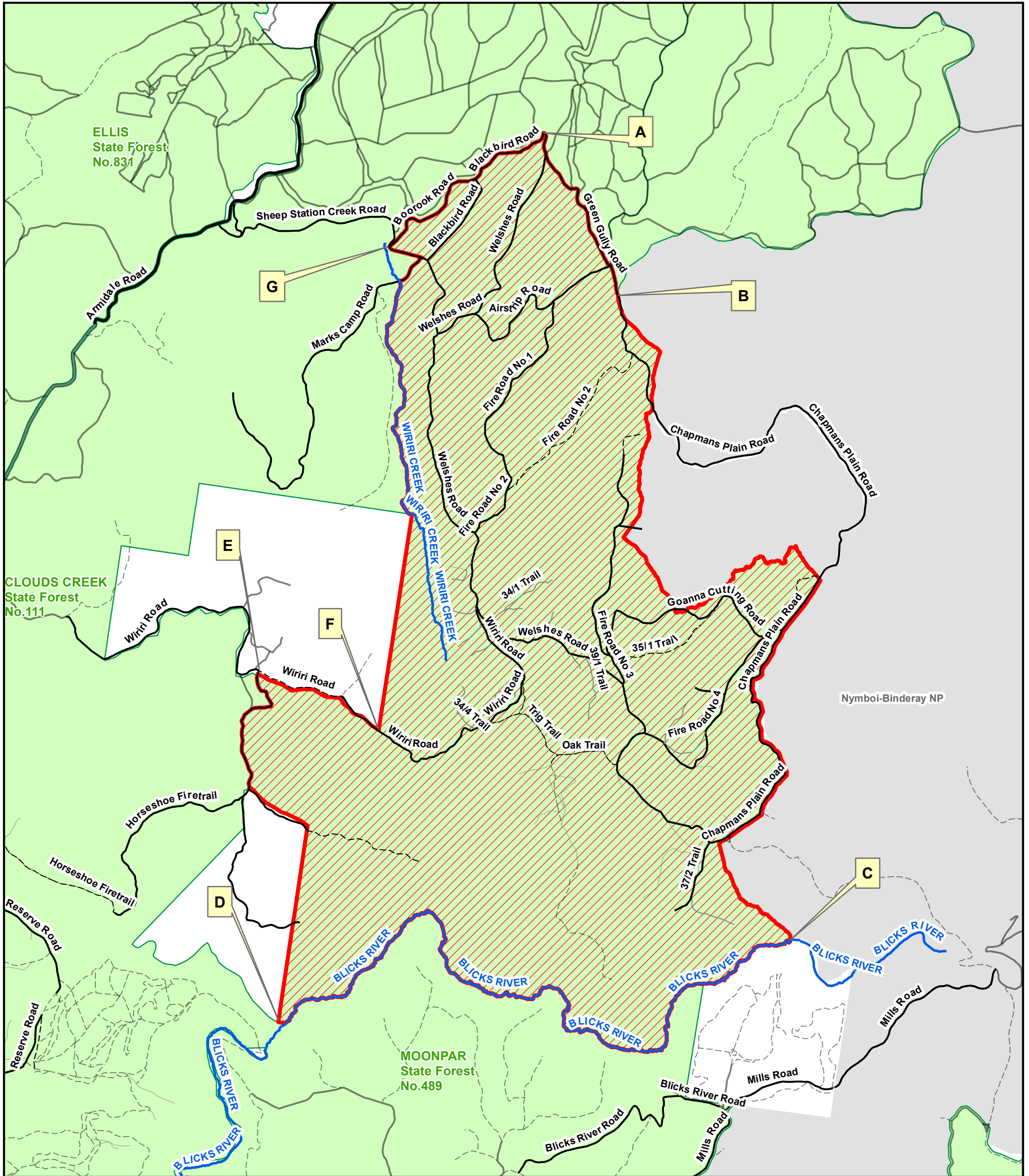
FORESTRY REGULATION 2022 SECTION 7

Datum: GCS_GDA_1994

Projection: GDA_1994_MGA_Zone_56



Scale: 1:35,000



Legend

- Drainage Line
- Other Road
- Unsealed Road
- CLOSED AREA
- National Park Estate
- Highway / Freeway
- Fire Trail
- State Forest
- Sealed Road

