

NO ENTRY

FORESTRY REGULATION 2022 - CLAUSES 6 & 7: CLOSURE OF PART RIAMUKKA STATE FOREST

FORESTRY CORPORATION OF NEW SOUTH WALES HAS RESERVED THE AREA DESCRIBED BELOW AS 'THE CLOSED AREA' FOR THE EXCLUSIVE USE OF ITS CONTRACTORS, SUPPORT AND SUPERVISING STAFF CARRYING OUT HARVESTING OPERATIONS DURING THE PERIOD DESCRIBED BELOW AS 'THE CLOSURE PERIOD'.

THE ENTRY OF ALL PERSONS INTO THE CLOSED AREA DURING THE CLOSURE PERIOD, OTHER THAN PERSONS AUTHORISED IN WRITING BY THE FORESTRY CORPORATION OF NEW SOUTH WALES, IS HEREBY PROHIBITED. PERSONS ENTERING INTO OR REMAINING IN THE CLOSED AREA DURING THE CLOSURE PERIOD WITHOUT FORESTRY CORPORATION OF NEW SOUTH WALES' PERMISSION ARE LIABLE TO PROSECUTION, MAXIMUM PENALTY \$2,200 PER OFFENCE.

DESCRIPTION OF THE CLOSED AREAS

That part of Riamukka State Forest No. 992 enclosed by the mapped boundary:

- A. commencing near the intersection of Hell Hole Forest Road and the State forest/Ngulin Nature Reserve boundary (marked Point 'A' on the map); then, in a clockwise direction around the Closed Area,
- B. in a generally easterly direction following Hell Hole Forest Road to the intersection with Grundy Forest Road (marked Point 'B' on the map); then,
- C. in a generally southerly, then easterly direction following Grundy Forest Road, to the intersection with Frown and Back Creek Forest Roads (marked Point 'C' on the map); then,
- D. in a generally southerly direction following Back Creek Forest Road to the intersection with Ralphs Fire Trail, then to the intersection of Ralphs Fire Trail and Eastern Hills Boundary Trail (marked Point 'D' on the map); then,
- E. in a generally easterly direction following Eastern Hills Boundary Trail to the State forest/private property boundary (marked Point 'E' on the map); then,
- F. in a generally southerly, then easterly, then southerly, then westerly direction, along the State forest/private property boundary to the junction with a Crown Road Reserve separating State forest from private property (marked Point 'F' on the map); then,
- G. in a generally southerly, then westerly direction along the State forest/Crown Road Reserve boundary to where the State forest boundary crosses Back Creek (marked Point 'G' on the map); then,
- H. in a generally northerly direction following Back Creek to its junction with an unnamed drainage feature, then in a generally westerly direction following that unnamed drainage feature to the State forest/Nature Reserve boundary (marked Point 'H' on the map); then,
- I. in a generally northerly direction along another unnamed drainage feature that forms part of the State forest/Nature Reserve boundary to where the gazetted State forest/Nature Reserve boundary commences (marked Point 'I' on the map);

then, in a generally north-westerly, then northerly, then north-easterly direction following the gazetted State forest/Nature Reserve boundary back to Point 'A' on the map.

To be clear, the Closed Area includes parts of several roads/trails, which are closed to all but through vehicle traffic. Unauthorised vehicles must not stop or linger along these sections of these roads (as mapped) due to safety risks arising from forest operations. Between Points 'E' and 'H', only authorised vehicles and residents of private property east and south of the State forest can use roads/trails within the Closed Area to access non-State forest tenure, if required.

DESCRIPTION OF THE CLOSURE PERIOD

Between 7:00 am Thursday 8th February 2024 and 7:00 am Sunday June 30th 2024.

BY ORDER OF FORESTRY CORPORATION OF NEW SOUTH WALES, by its delegate:



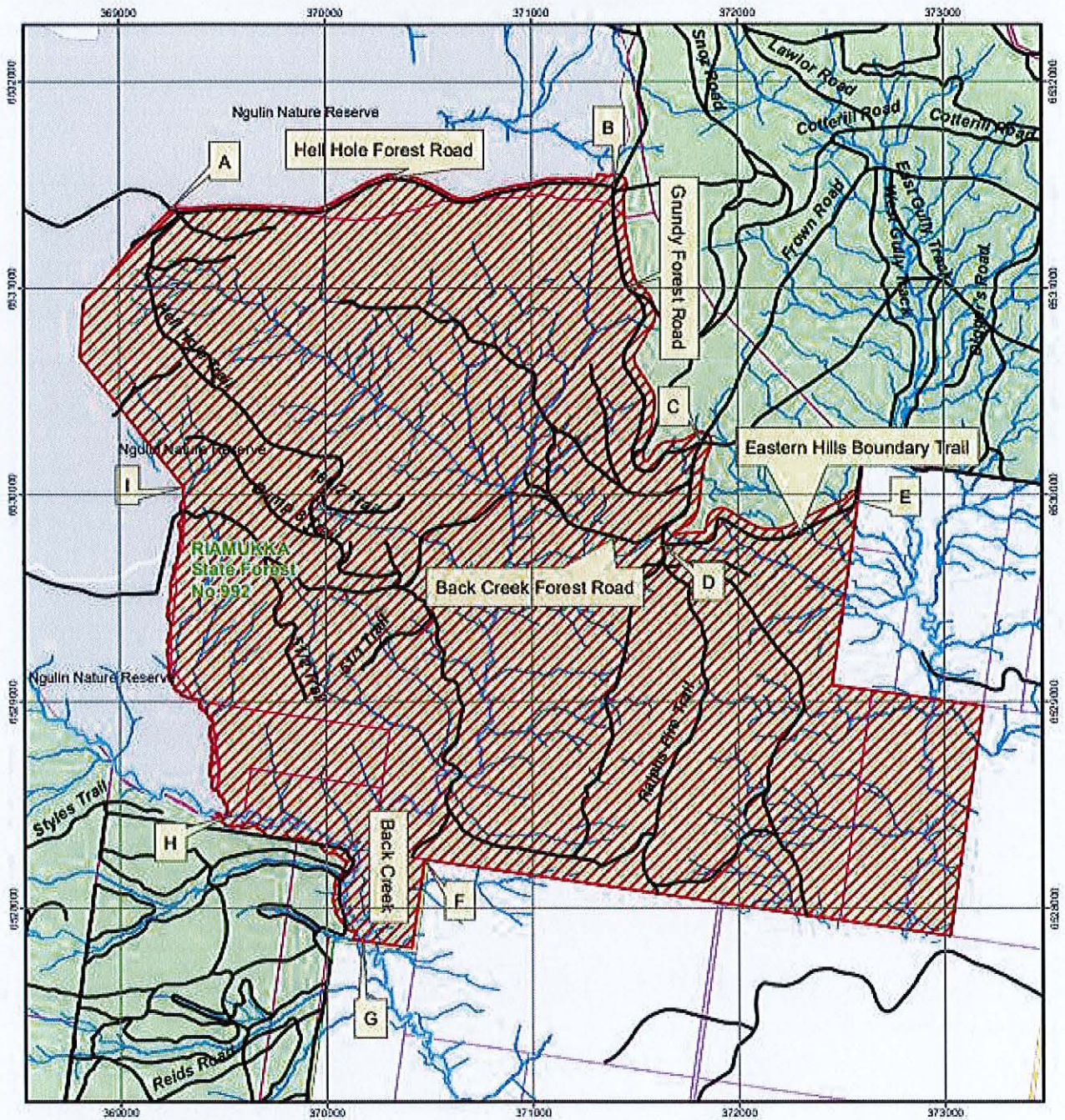
Dean Caton, REGIONAL MANAGER – PRODUCTION NORTH, HARDWOOD FORESTS DIVISION

Scale 1:24,957
Datum: GDA94

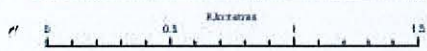
Prepared by: HFD Planning
Date: 10/03/2023

CLOSED AREA

FORESTRY REGULATION 2022 CLAUSES 6 & 7



Legend		Mapped Drainage Feature	Tenure	
	Closed Area		Class 1	See supporting document with description of exclusion area boundaries
	Roads and Trails		Class 2	
			Class 3	
			Class 4	
			State Forest	
			National Park / Nature Reserve	
			Crown Land	
			Private Property	



© Crown Copyright 2011. The information and data contained in this map is to the best of Forestry Corporation's belief, true and correct at the time of publication. However, changes in circumstances after the publication may impact upon the accuracy of the material. No warranty or guarantee is provided by the State of New South Wales, Forestry Corporation and its employees and agents and no liability is accepted for any loss or damage, costs or expenses resulting from the use or reliance upon the information and data contained in this map.