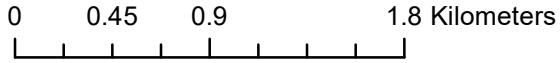




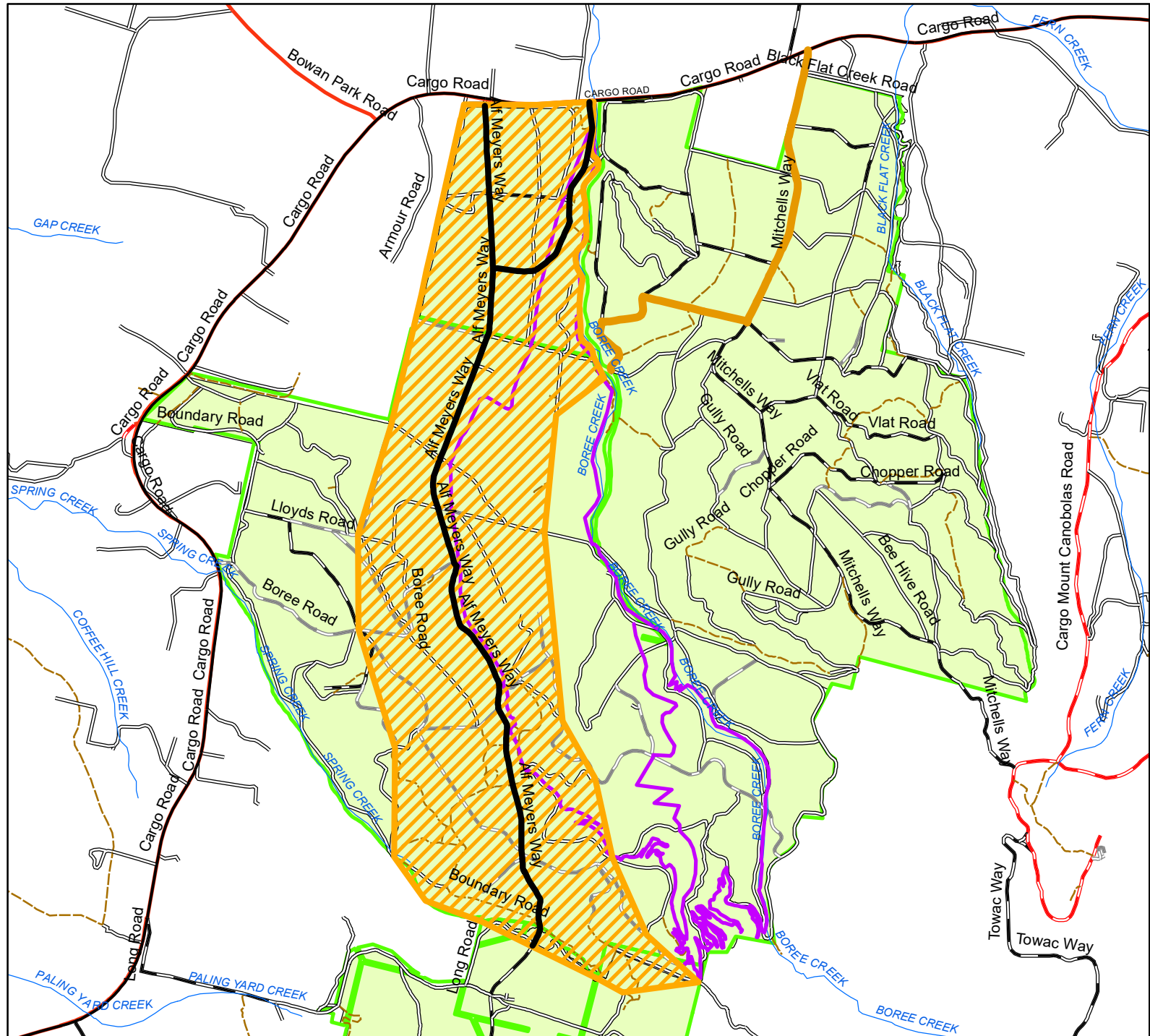
Current Forestry Operations Glenwood State Forest

Date: 13/02/2024



Legend

- Glenwood_Haulage_Route_2024
- Glenwood_No_Go_Zone_2024
- Mitchells_Way_Detour
- Trail of Awesomeness Loop



MAP DISCLAIMER
The information and data contained in this map is to the best of Forestry Corporation's belief, true and correct at the time of publication. However, changes in circumstances after the publication may impact upon the accuracy of the material. No warranty or guarantee is provided by the State of New South Wales, Forestry Corporation and its employees and agents and no liability is accepted for any loss or damage, costs or expense resulting from the use or reliance upon the information and data contained in this map.

CAUTION
Management /Vehicular tracks: Tracks vary in standard, generally 4WD only and may be impassable or closed. Tracks are maintained for management purposes only. Use extreme caution when driving.
Haulage: Forest roads are used by log trucks.
Hunting: Hunting is permitted by the DPI Biosecurity Licensing Unit in some State Forests. Refer any enquiries to www.biosecurity.nsw.gov.au