

NO ENTRY

FORESTRY REGULATION 2022 - SECTION 6 & 7

CLOSURE OF PART TUCKERS NOB

STATE FOREST

FORESTRY CORPORATION OF NEW SOUTH WALES HAS RESERVED THE AREA DESCRIBED BELOW AS 'THE CLOSED AREA' FOR THE EXCLUSIVE USE OF ITS CONTRACTORS, SUPPORT AND SUPERVISING STAFF CARRYING OUT HARVESTING OPERATIONS DURING THE PERIOD DESCRIBED BELOW AS 'THE CLOSURE PERIOD'.

THE ENTRY OF ALL PERSONS INTO THE CLOSED AREA DURING THE CLOSURE PERIOD, OTHER THAN PERSONS AUTHORISED IN WRITING BY THE FORESTRY CORPORATION OF NEW SOUTH WALES, IS HEREBY PROHIBITED.

PERSONS ENTERING INTO OR REMAINING IN THE CLOSED AREA DURING THE CLOSURE PERIOD WITHOUT FORESTRY CORPORATION OF NEW SOUTH WALES' PERMISSION ARE LIABLE TO PROSECUTION, MAXIMUM PENALTY \$2,200 PER OFFENCE.

DESCRIPTION OF THE CLOSED AREAS

That part of Tuckers Nob State Forest No. 612 enclosed by the boundary commencing at the State Forest boundary adjacent to the intersection of Gleniffer Road and Roses Road (marked point 'A' on the map); then moving in a clockwise direction around the closure area, in a generally south-easterly direction following the State Forest boundary running parallel to the Gleniffer Road to the intersection with 27/1 Trail (marked point 'B' on the map) **NB. Gleniffer Road remains open**; then in a generally westerly direction following 27/1 Trail to the intersection with an un-named drainage line (marked point 'C' on the map), then in a generally south-westerly direction following the un-named drainage line to the State Forest boundary (marked point 'D' on the map), then in a generally north-westerly direction following the State Forest boundary adjacent to the intersection of Gleniffer Road and Roses Road (marked point 'A' on the map).

DESCRIPTION OF THE CLOSURE PERIOD

Between 7:00 am Thursday 1st February 2024 and 6:00 pm Sunday 30th June 2024 BY

ORDER OF FORESTRY CORPORATION OF NEW SOUTH WALES, by its delegate:

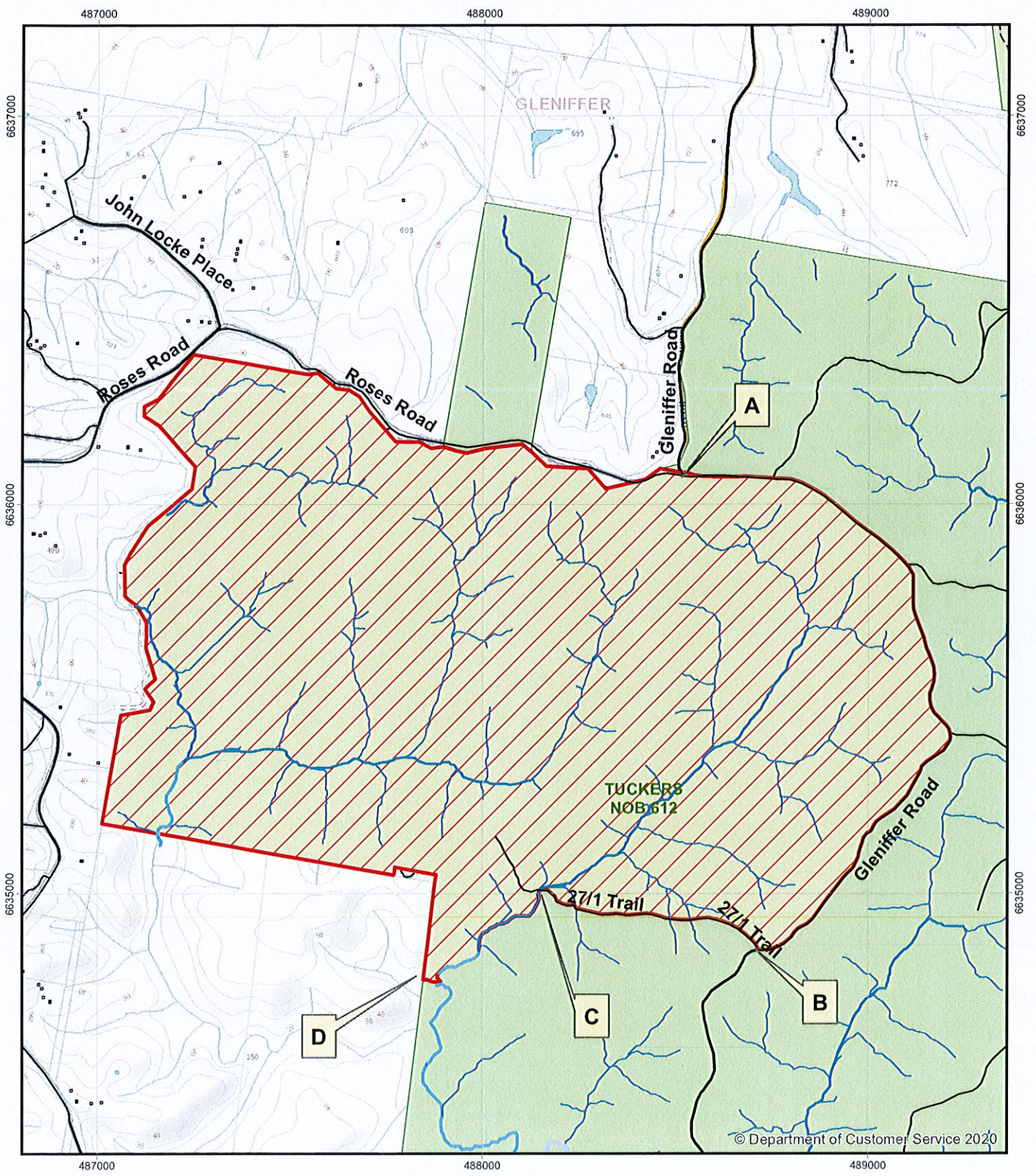


Dean Caton
REGIONAL MANAGER - NORTHERN
FCNSW COFFS HARBOUR

N
Scale 1:13,335
Datum: GDA94

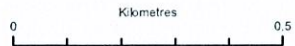
CLOSED AREA

FORESTRY REGULATION 2022 SECTIONS 6 & 7
PART OF TUCKERS NOB STATE FORESTS No. 612



Legend

 CLOSURE AREA



© Crown Copyright 2013. The information and data contained in this map is to the best of Forestry Corporation's belief, true and correct at the time of publication. However, changes in circumstances after the publication may impact upon the accuracy of the material. No warranty or guarantee is provided by the State of New South Wales, Forestry Corporation and its employees and agents and no liability is accepted for any loss or damage, costs or expense resulting from the use or reliance upon the information and data contained in this map