



WALLAROO FLORA RESERVE NO. 48

SITE SPECIFIC WORKING PLAN

Table of Contents

| | |
|---|-----------|
| 1. Details of the Reserve | 3 |
| 1.1 Location | 3 |
| 1.2 Key Attributes of the Reserve | 3 |
| 1.3 General Description | 3 |
| 1.4 History | 4 |
| 1.5 Current Usage | 5 |
| 2. System of Management | 5 |
| 2.1 Objectives of Management | 5 |
| 2.2 Management Strategies | 5 |
| 2.3 Management Responsibility | 7 |
| 2.4 Monitoring, Reporting and Review | 7 |
| 3. List of Appendices | 7 |
| Appendix 1 – Locality Map | 8 |
| Appendix 2 – Topographic & Forest Type Map | 9 |
| Appendix 3 – Flora Species List | 10 |
| Appendix 4 – Fauna Species List | 16 |
| Appendix 5 – Approval and Amendments from previous version | 20 |

This site-specific working describes the important values of an individual flora reserve and identifies site-specific priorities for management. The plan is to be read in conjunction with the Flora Reserve Plan: Background and General Management document, which identifies Forestry Corporation's broad objectives and strategies for managing flora reserves. These two documents together form the flora reserve working plan in line with the requirements of section 25 of the *Forestry Act 2012*.

1. DETAILS OF THE RESERVE

1.1 LOCATION

Wallaroo Flora Reserve lies 22 kilometres north of Raymond Terrace and 1.5 kilometres northwest of the Pacific Highway, in the northeastern corner of Wallaroo State Forest. See Locality Map in Appendix 1.

1.2 KEY ATTRIBUTES OF THE RESERVE

Under the *Forestry Act 2012*, flora reserves are set apart for the preservation of native flora.

The reserve possesses the following identified attributes that are to be protected:

- » areas of multiple threatened ecological communities in the Northern Sydney Basin bioregion; swamp oak floodplain forest, subtropical coastal floodplain forest, coastal saltmarsh, and swamp sclerophyll forest on coastal floodplains
- » areas of High Conservation Value Old Growth
- » representative examples of forest ecosystems in the area
- » Aboriginal Cultural and heritage values of the area.

1.3 GENERAL DESCRIPTION

Area

Wallaroo Flora Reserve comprises approximately 490 hectares. The west section of the reserve is partly dissected by the Bucketts Way.

Topography

Topography is gentle, with Captain Hills Creek flowing through the reserve to the northeast. Elevation lies between 22 and 30 metres above sea level. Refer to Appendix 2 for topographic map.

Geology and Soils

The reserve is located on Carboniferous sediments (Crawford formation). These have provided very heavy podzolic soils with poor drainage.

Climate

Warm temperate, with the highest rainfall occurring during the summer and autumn, and the lowest in the spring. Frosts occur in open sites during the winter months.

Vegetation/Flora and Fauna

| | | |
|---|--|---------------------|
| Flora Reserve Plan: Wallaroo Site Specific Working Plan | Version No.: 2 | Page 3 of 20 |
| Document ID: D21/17018 | Owner: Senior Manager Forest Stewardship | Issue date: 6/9/23 |
| | | Review date: 6/9/33 |

WARNING: a printed copy of this document may be uncontrolled. Please verify this is the latest version prior to use.

The reserve contains swamp oak floodplain forest, subtropical coastal floodplain forest, coastal saltmarsh, and swamp sclerophyll forest on coastal floodplains, all of which are listed as threatened ecological communities in the Northern Sydney Basin bioregion.

Vegetation within the reserve is characteristic of that generally found on poorly drained heavy soil with Wallaroo State Forest and other adjacent forest areas. Unlike most other nearby forested land, the reserve has been preserved from logging and other operations for a long period, though there are signs of some early selective removal of trees.

The reserve has three distinct vegetation communities:

- » Ironbark type (forest type 84), covering an area of 13 hectares along the Bucketts Way boundary, and features an almost pure overstorey of Grey Ironbark (*Eucalyptus paniculata*).
- » Paperbark (forest type 224), covering an area of about 7 hectares. Yellow Paperbark (*Melaleuca nodosa*) dominates on these heavy, poorly drained flats, with Callistemon, Hibbertia and Acacia spp as the main shrub species present.
- » Spotted Gum type (forest type 70), covering an area of about 8 hectares along the Lone Pine Forest Road boundary of the reserve. While Spotted Gum (*E. maculata*) dominates the overstorey, there is a well-developed understorey of Yellow Paperbark and occasional Smooth barked Apple (*Angophora costata*) and Broadleaved White Mahogany (*E. umbra* ssp *carnea*).

Appendix 2 Map shows the various Forest Types and their locations within the reserve. Appendices 3 and 4 outline a list of flora and fauna species known to occur within the reserve.

1.4 HISTORY

Aboriginal History and Cultural Values

Wallaroo Flora Reserve is situated within the traditional lands of the Worimi people and there are a number of Aboriginal cultural heritage sites located within the reserve or the surrounding area. The area is part of a cultural landscape, used for everyday and ceremonial activities including seasonal food and resource gathering and also as a travel route from the mountains to the coast. Tangible aspects of these activities are evident as walking tracks and scar trees, the remains of camp sites with stone tools (isolated stone artefact and artefact scatters) as well as sacred features and places created at the beginning of time.

Post European Settlement

Harvesting and grazing

The area that is now Wallaroo Flora Reserve has a long period of protection from logging operations, due largely to its proximity to the forest headquarters.

In the absence of cattle-proof fencing, a limited amount of light grazing has occurred in the past. The effect of this has not been significant.

Fire

Fire has been part of the Australian landscape for at least the last 60,000 years and most forests have experienced fire multiple times over many centuries. Records of recent fires in this location are summarised below.

- » 1989 - wildfire
- » 1991 - wildfire
- » 1998 - wildfire
- » 2002 - wildfire
- » 2016 - wildfire

| | | |
|---|--|---------------------|
| Flora Reserve Plan: Wallaroo Site Specific Working Plan | Version No.: 2 | Page 4 of 20 |
| Document ID: D21/17018 | Owner: Senior Manager Forest Stewardship | Issue date: 6/9/23 |
| | | Review date: 6/9/33 |

WARNING: a printed copy of this document may be uncontrolled. Please verify this is the latest version prior to use.

Establishment of Flora Reserve

An area of about 28 hectares was gazetted as Wallaroo Flora Reserve No. 80008 on 30th September 1983, this is the segregated area of the Flora Reserve to the west of The Buckets Way. In a general renumbering of Flora Reserves in the Government Gazette of 24 July 1987, the reserve became Wallaroo Flora Reserve No. 48.

Extension No. 1 of Wallaroo Flora Reserve was gazetted on 1st July 2007, adding an additional area of 463 hectares to the reserve. This extension is slightly segregated from the original reserve area, as the extension is to the East of The Buckets Way.

1.5 CURRENT USAGE

The reserve receives limited recreational usage, primarily by visitors driving past the reserve on the Bucketts Way. No recreational facilities are provided at the reserve and there is no intention to develop any facilities.

2. SYSTEM OF MANAGEMENT

2.1 OBJECTIVES OF MANAGEMENT

Under the *Forestry Act 2012*, flora reserves are set apart for the preservation of native flora. The objectives of Wallaroo Flora Reserve are to:

- » enhance the ecological quality of threatened ecological communities within the reserve (swamp oak floodplain forest, subtropical coastal floodplain forest, coastal saltmarsh, and swamp sclerophyll forest on coastal floodplains)
- » protect representative examples of forest ecosystems in the area
- » protect indigenous/non-indigenous cultural and archaeological values of the reserve
- » maintain reference stands and provide for limited scientific study consistent with the protection of the area, including the development of an understanding of successional growth processes after disturbance and as a reference for assessing the effects of alternative land use in surrounding areas
- » provide for the continued protection of the Reserve and neighboring areas from damaging wildfire and other agents.

2.2 MANAGEMENT STRATEGIES

The broad management strategies and related actions to preserve native flora and improve the value and extent of habitat in State forest flora reserves are detailed in the Flora Reserve Management Plan: Background and General Management document, which is to be read in conjunction with this plan. Specific additional management strategies applied in this flora reserve include:

- » Property maintenance, through:
 - establishment and maintenance of appropriate fences, gates, and signs
 - removal of unnecessary fencing
 - maintenance of roads and trails
 - restricting visitor use to walking trails for educational activities.

- » Conservation and improvement of habitat, through:
 - maintenance of native vegetation, which may include manipulation by mechanical means for habitat improvement
 - regeneration of any cleared or degraded land, through plantings and natural recruitment
 - weed control
 - removal of rubbish
 - management of human disturbance, including harvesting and other forest product operations
 - retention of dead timber and other habitat resources
 - management of fire, including prescribed or hazard reduction burning.
- » Pest animal control.

Cultural Values

Explore opportunities for Aboriginal community involvement in managing the flora reserve.

Weeds

The vegetation within the flora reserve is in very healthy state with no obvious weeds present. As far as reasonably practicable, exotic species will be controlled, as detailed in section 2.4.

Trail maintenance

Maintenance of roads and trails is important to enable access to the forest for forest management, firefighting, tourism and recreation. Poorly maintained roads can also transport significant levels of sediment, increasing the turbidity of water within creeks. This consequently reduces habitat quality and aquatic biodiversity and can take significant periods of time to recover.

Permitted activities

Under the Forest Management Zoning (FMZ) system, Wallaroo Flora Reserve N. 48 is zoned FMZ 1 and therefore contributes to the dedicated reserve system in the Lower North East Region. Management will be consistent with the requirements of JANIS dedicated.

The latest operational guide detailing information not permitted in FMZ1 is published on the Forestry Corporation website.

The following activities may be permitted subject to standard conditions approved by the delegated Manager and consistent with the management objectives for the reserve, Codes of Practice, Forest Practices/Operational Circulars, protocols, Licenses and Management/Recovery Plans:

- » scientific studies (e.g., fauna surveys including trapping)
- » maintenance of existing roads and fire trails
- » maintenance of existing recreation facilities and upgrading where necessary to keep pace with demand while protecting the attributes of the Reserve
- » limited tree and or limb removal for safety, viewing or construction of facilities in areas used for recreation
- » pest animal and weed control
- » general access for activities such as bush walking, photography and nature study
- » beekeeping (existing set-down sites may be used)
- » Aboriginal use of forest products consistent with the maintenance of the conservation attributes to be protected in the reserve

| | | | |
|---|--|--------------------|---------------------|
| Flora Reserve Plan: Wallaroo Site Specific Working Plan | | Version No.: 2 | Page 6 of 20 |
| Document ID: D21/17018 | Owner: Senior Manager Forest Stewardship | Issue date: 6/9/23 | Review date: 6/9/33 |

WARNING: a printed copy of this document may be uncontrolled. Please verify this is the latest version prior to use.

- » fire management will be undertaken in a manner consistent with maintaining the health of forest ecosystems.

The following activities may only be permitted with special conditions:

- » Construction of new roads. Construction will only be permitted in exceptional instances and consistent with the following principles:
 - no practical alternative is available
 - the attributes of the Reserve will not be significantly affected by the road or fire trail
 - opportunity is provided for public comment on the proposal, obtained through advertising in the local newspaper
 - Ministerial approval is given for the proposal.

Mining

- » The reserve was exempted from the provisions of the Mining Act by notice in the Government Gazette of 19th April 1985.

2.3 MANAGEMENT RESPONSIBILITY

The reserve will be administered by Forestry Corporation of NSW's Hardwood Forests Division, with the authority for decision making delegated to the Senior Manager Forest Stewardship or equivalent level manager.

2.4 MONITORING, REPORTING AND REVIEW

The region will monitor changes to the key attributes of the reserve and will review the effectiveness of the management strategies designed to protect those attributes and to achieve the management objectives.

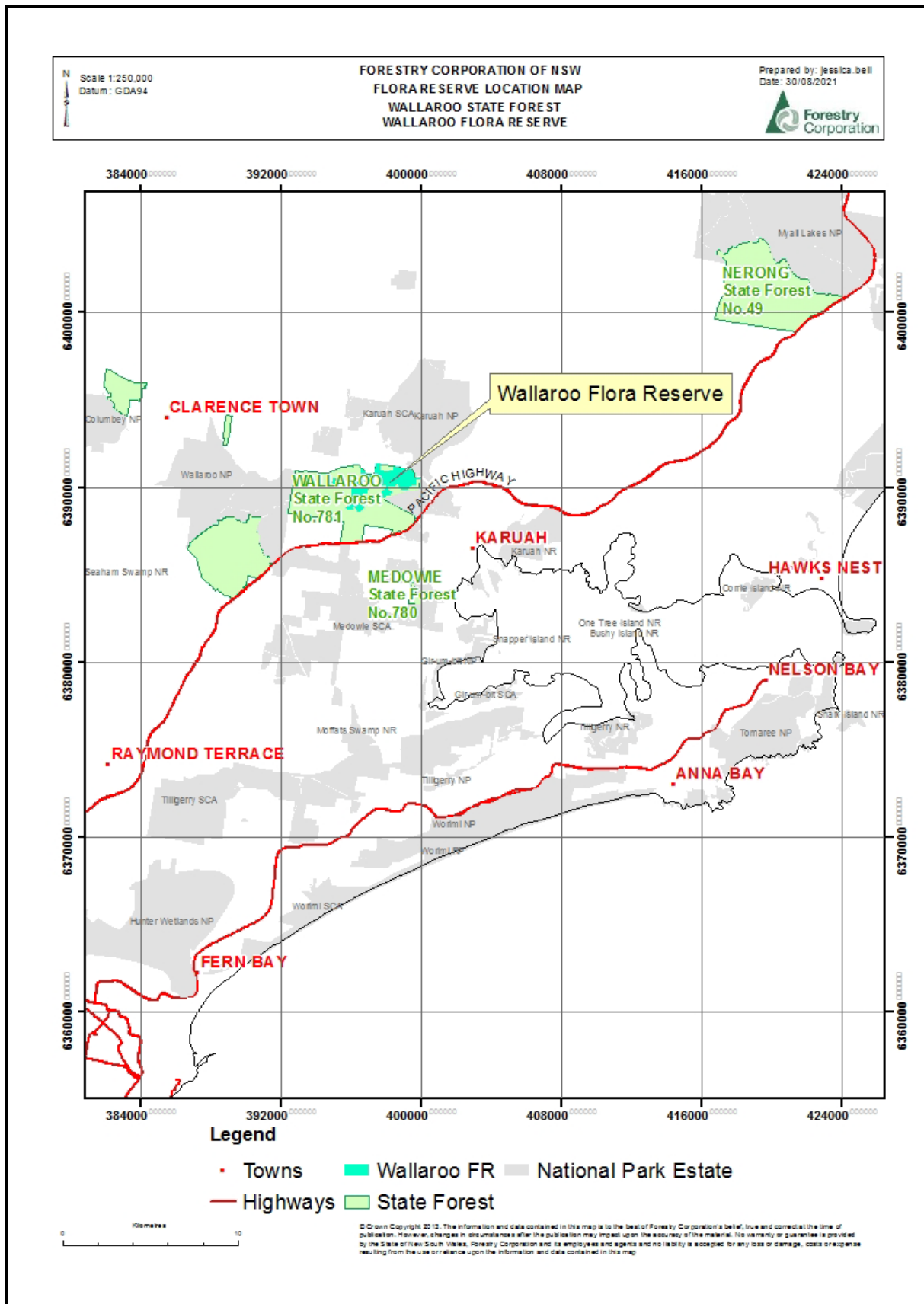
The results of this monitoring, review and management response will be included in annual reporting processes.

The provisions of this working plan will be amended, if necessary, in light of the results of the monitoring program and / or legislative change and with the approval of the Minister administering the *Forestry Act 2012*.

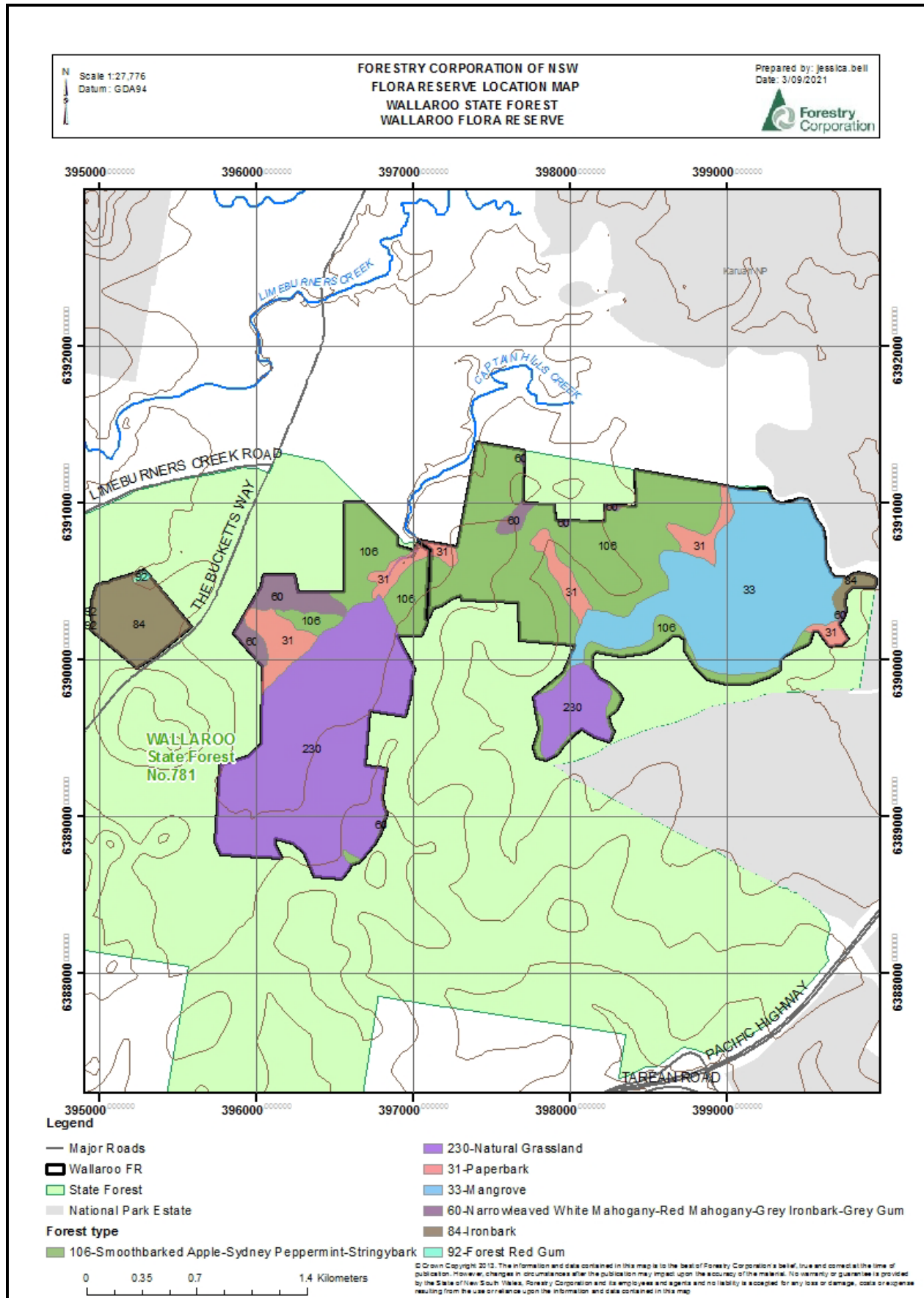
3. LIST OF APPENDICES

- » Appendix 1 – Locality Map
- » Appendix 2 – Topographic and Forest Type Map
- » Appendix 3 – Flora Species List
- » Appendix 4 – Fauna Species List
- » Appendix 5 – Approval and Amendments from previous version

APPENDIX 1 – LOCALITY MAP



APPENDIX 2 – TOPOGRAPHIC & FOREST TYPE MAP



APPENDIX 3 – FLORA SPECIES LIST

Flora found within 5000m of flora reserve, desktop search undertaken August 2021

| Scientific name | Scientific name | Scientific name |
|--|---|--|
| <i>Acacia falcata</i> | <i>Angophora inopina</i> | <i>Bidens pilosa</i> |
| <i>Acacia filicifolia</i> | <i>Anisopogon avenaceus</i> | <i>Billardiera scandens</i> |
| <i>Acacia floribunda</i> | <i>Aphanopetalum resinoseum</i> | <i>Blechnum cartilagineum</i> |
| <i>Acacia implexa</i> | <i>Arachniodes aristata</i> | <i>Blechnum neohollandicum</i> |
| <i>Acacia irrorata</i> | <i>Archontophoenix cunninghamiana</i> | <i>Blechnum spinulosum</i> |
| <i>Acacia irrorata subsp. irrorata</i> | <i>Aristida benthamii</i> | <i>Boronia pinnata</i> |
| <i>Acacia longifolia</i> | <i>Aristida ramosa</i> | <i>Boronia polygalifolia</i> |
| <i>Acacia longifolia subsp. longifolia</i> | <i>Aristida spp.</i> | <i>Bossiaea obcordata</i> |
| <i>Acacia longissima</i> | <i>Aristida vagans</i> | <i>Bossiaea prostrata</i> |
| <i>Acacia maidenii</i> | <i>Aristida warburgii</i> | <i>Bossiaea rhombifolia</i> |
| <i>Acacia myrtifolia</i> | <i>Arrhenechthites mixta</i> | <i>Breynia cernua</i> |
| <i>Acacia obcordata</i> | <i>Arthrochilus prolixus</i> | <i>Breynia oblongifolia</i> |
| <i>Acacia obtusifolia</i> | <i>Arthropodium milleflorum</i> | <i>Briza maxima</i> |
| <i>Acacia parramattensis</i> | <i>Arthropodium minus</i> | <i>Briza subaristata</i> |
| <i>Acacia penninervis</i> | <i>Arthropodium sp. B</i> | <i>Bromus catharticus</i> |
| <i>Acacia spp.</i> | <i>Arundinella nepalensis</i> | <i>Brunonia australis</i> |
| <i>Acacia terminalis</i> | <i>Asparagus aethiopicus</i> | <i>Brunoniella australis</i> |
| <i>Acacia terminalis subsp. longiaxialis</i> | <i>Astroloma humifusum</i> | <i>Brunoniella pumilio</i> |
| <i>Acacia ulicifolia</i> | <i>Astrotricha longifolia</i> | <i>Burchardia umbellata</i> |
| <i>Acianthus caudatus</i> | <i>Astrotricha longifolia f. 'Coastal'</i> | <i>Bursaria longisepala</i> |
| <i>Acianthus fornicatus</i> | <i>Austrostipa pubescens</i> | <i>Bursaria spinosa</i> |
| <i>Acmena smithii</i> | <i>Avicennia marina subsp. australasica</i> | <i>Bursaria spinosa subsp. spinosa</i> |
| <i>Acrotriche aggregata</i> | <i>Axonopus fissifolius</i> | <i>Caesia parviflora var. parviflora</i> |
| <i>Acrotriche divaricata</i> | <i>Backhousia myrtifolia</i> | <i>Caladenia catenata</i> |
| <i>Adiantum aethiopicum</i> | <i>Baeckea diosmifolia</i> | <i>Callistemon acuminatus</i> |
| <i>Adiantum hispidulum</i> | <i>Banksia integrifolia</i> | <i>Callistemon citrinus</i> |
| <i>Aegiceras corniculatum</i> | <i>Banksia oblongifolia</i> | <i>Callistemon linearifolius</i> |
| <i>Ajuga australis</i> | <i>Banksia serrata</i> | <i>Callistemon linearis</i> |
| <i>Allocasuarina littoralis</i> | <i>Banksia spinulosa</i> | <i>Callistemon rigidus</i> |
| <i>Allocasuarina torulosa</i> | <i>Banksia spinulosa var. collina</i> | <i>Callistemon salignus</i> |
| <i>Alphitonia excelsa</i> | <i>Bauera rubioides</i> | <i>Callistemon spp.</i> |
| <i>Amyema cambagei</i> | <i>Baumea acuta</i> | <i>Callistemon viminalis</i> |
| <i>Amyema spp.</i> | <i>Baumea articulata</i> | <i>Callitris endlicheri</i> |
| <i>Andropogon virginicus</i> | <i>Baumea juncea</i> | <i>Calochilus paludosus</i> |
| <i>Angophora bakeri</i> | <i>Baumea rubiginosa</i> | <i>Calochilus spp.</i> |
| <i>Angophora costata</i> | <i>Baumea spp.</i> | <i>Calochlaena dubia</i> |
| <i>Angophora floribunda</i> | | <i>Calystegia marginata</i> |
| | | <i>Carex appressa</i> |

| Scientific name |
|---|
| <i>Carex brunnea</i> |
| <i>Carex inversa</i> |
| <i>Carex longebrachiata</i> |
| <i>Carex maculata</i> |
| <i>Cassinia aculeata</i> |
| <i>Cassinia quinquefaria</i> |
| <i>Cassinia sifton</i> |
| <i>Cassinia spp.</i> |
| <i>Cassinia uncatata</i> |
| <i>Cassytha glabella</i> |
| <i>Cassytha glabella f. glabella</i> |
| <i>Cassytha pubescens</i> |
| <i>Casuarina cunninghamiana subsp. cunninghamiana</i> |
| <i>Casuarina glauca</i> |
| <i>Cayratia clematidea</i> |
| <i>Celastrus australis</i> |
| <i>Cenchrus clandestinus</i> |
| <i>Cenchrus longispinus</i> |
| <i>Centaurium erythraea</i> |
| <i>Centella asiatica</i> |
| <i>Chamaesyce drummondii</i> |
| <i>Chamaesyce spp.</i> |
| <i>Cheilanthes austrotenuifolia</i> |
| <i>Cheilanthes sieberi</i> |
| <i>Cheilanthes sieberi subsp. sieberi</i> |
| <i>Cheilanthes spp.</i> |
| <i>Chiloglottis formicifera</i> |
| <i>Chiloglottis trapeziformis</i> |
| <i>Chloris gayana</i> |
| <i>Chorizandra cymbaria</i> |
| <i>Cissus antarctica</i> |
| <i>Cissus hypoglauca</i> |
| <i>Citrus x taitensis</i> |
| <i>Claoxylon australe</i> |
| <i>Cleistanthus cunninghamii</i> |
| <i>Clematis glycinoides</i> |
| <i>Comesperma ericinum</i> |
| <i>Commelina cyanea</i> |
| <i>Commersonia fraseri</i> |
| <i>Convolvulus erubescens</i> |
| <i>Conyza bonariensis</i> |
| <i>Conyza spp.</i> |

| Scientific name |
|--|
| <i>Conyza sumatrensis</i> |
| <i>Coreopsis lanceolata</i> |
| <i>Corybas pruinosis</i> |
| <i>Corymbia gummifera</i> |
| <i>Corymbia intermedia</i> |
| <i>Corymbia maculata</i> |
| <i>Cotoneaster spp.</i> |
| <i>Cryptocarya erythroxyton</i> |
| <i>Cryptocarya microneura</i> |
| <i>Cryptostylis spp.</i> |
| <i>Cryptostylis subulata</i> |
| <i>Cupaniopsis anacardioides</i> |
| <i>Cyathochaeta diandra</i> |
| <i>Cyclosporum leptophyllum</i> |
| <i>Cymbidium suave</i> |
| <i>Cymbopogon refractus</i> |
| <i>Cynodon dactylon</i> |
| <i>Cynoglossum australe</i> |
| <i>Cyperus eragrostis</i> |
| <i>Cyperus tetraphyllus</i> |
| <i>Dampiera purpurea</i> |
| <i>Dampiera stricta</i> |
| <i>Daucus glochidiatus</i> |
| <i>Daviesia acicularis</i> |
| <i>Daviesia ulicifolia</i> |
| <i>Daviesia ulicifolia subsp. ulicifolia</i> |
| <i>Dendrobium aemulum</i> |
| <i>Dendrobium teretifolium</i> |
| <i>Dendrobium tetragonum</i> |
| <i>Dendrophthoe vitellina</i> |
| <i>Denhamia silvestris</i> |
| <i>Desmodium gunnii</i> |
| <i>Desmodium rhytidophyllum</i> |
| <i>Desmodium varians</i> |
| <i>Deyeuxia parviseta</i> |
| <i>Dianella caerulea</i> |
| <i>Dianella caerulea var. assera</i> |
| <i>Dianella caerulea var. caerulea</i> |
| <i>Dianella caerulea var. cinerascens</i> |
| <i>Dianella caerulea var. producta</i> |

| Scientific name |
|---|
| <i>Dianella caerulea var. protensa</i> |
| <i>Dianella prunina</i> |
| <i>Dianella revoluta</i> |
| <i>Dianella revoluta var. revoluta</i> |
| <i>Dichelachne micrantha</i> |
| <i>Dichelachne sieberiana</i> |
| <i>Dichondra repens</i> |
| <i>Dichondra sp. Inglewood</i> |
| <i>Dichopogon fimbriatus</i> |
| <i>Digitaria diffusa</i> |
| <i>Digitaria parviflora</i> |
| <i>Digitaria ramularis</i> |
| <i>Digitaria sanguinalis</i> |
| <i>Dillwynia phylloides</i> |
| <i>Dillwynia retorta</i> |
| <i>Dioscorea transversa</i> |
| <i>Dipodium variegatum</i> |
| <i>Diuris spp.</i> |
| <i>Dodonaea boroniifolia</i> |
| <i>Dodonaea triquetra</i> |
| <i>Doryanthes excelsa</i> |
| <i>Drosera auriculata</i> |
| <i>Echinopogon caespitosus</i> |
| <i>Echinopogon caespitosus var. caespitosus</i> |
| <i>Echinopogon ovatus</i> |
| <i>Echinopogon spp.</i> |
| <i>Ehrharta erecta</i> |
| <i>Eleusine indica</i> |
| <i>Embelia australiana</i> |
| <i>Entolasia marginata</i> |
| <i>Entolasia stricta</i> |
| <i>Epacris microphylla</i> |
| <i>Epacris pulchella</i> |
| <i>Epaltes australis</i> |
| <i>Eragrostis alveiformis</i> |
| <i>Eragrostis brownii</i> |
| <i>Eragrostis curvula</i> |
| <i>Eragrostis leptostachya</i> |
| <i>Eragrostis parviflora</i> |
| <i>Eragrostis sororia</i> |
| <i>Eragrostis spp.</i> |
| <i>Erythrorchis cassythoides</i> |
| <i>Eucalyptus acmenoides</i> |

| Scientific name |
|---------------------------------|
| <i>Eucalyptus agglomerata</i> |
| <i>Eucalyptus blakelyi</i> |
| <i>Eucalyptus canaliculata</i> |
| <i>Eucalyptus capitellata</i> |
| <i>Eucalyptus carnea</i> |
| <i>Eucalyptus crebra</i> |
| <i>Eucalyptus fergusonii</i> |
| <i>subsp. fergusonii</i> |
| <i>Eucalyptus fibrosa</i> |
| <i>Eucalyptus glaucina</i> |
| <i>Eucalyptus globoidea</i> |
| <i>Eucalyptus grandis</i> |
| <i>Eucalyptus melliodora</i> |
| <i>Eucalyptus microcorys</i> |
| <i>Eucalyptus moluccana</i> |
| <i>Eucalyptus paniculata</i> |
| <i>Eucalyptus paniculata</i> |
| <i>subsp. paniculata</i> |
| <i>Eucalyptus pilularis</i> |
| <i>Eucalyptus piperita</i> |
| <i>Eucalyptus propinqua</i> |
| <i>Eucalyptus punctata</i> |
| <i>Eucalyptus resinifera</i> |
| <i>Eucalyptus resinifera</i> |
| <i>subsp. resinifera</i> |
| <i>Eucalyptus robusta</i> |
| <i>Eucalyptus rossii</i> |
| <i>Eucalyptus saligna</i> |
| <i>Eucalyptus siderophloia</i> |
| <i>Eucalyptus spp.</i> |
| <i>Eucalyptus tereticornis</i> |
| <i>Eucalyptus umbra</i> |
| <i>Euchiton involucratus</i> |
| <i>Euchiton sphaericus</i> |
| <i>Euchiton spp.</i> |
| <i>Eupomatia laurina</i> |
| <i>Eustrephus latifolius</i> |
| <i>Exocarpos cupressiformis</i> |
| <i>Ficinia nodosa</i> |
| <i>Ficus coronata</i> |
| <i>Ficus rubiginosa</i> |
| <i>Fimbristylis dichotoma</i> |
| <i>Gahnia aspera</i> |
| <i>Gahnia clarkei</i> |
| <i>Gahnia melanocarpa</i> |
| <i>Gahnia radula</i> |

| Scientific name |
|-----------------------------------|
| <i>Gahnia sieberiana</i> |
| <i>Gahnia spp.</i> |
| <i>Galium binifolium</i> |
| <i>Galium gaudichaudii</i> |
| <i>Galium propinquum</i> |
| <i>Galium spp.</i> |
| <i>Gamochaeta purpurea</i> |
| <i>Geitonoplesium cymosum</i> |
| <i>Genoplesium fimbriatum</i> |
| <i>Genoplesium ruppilii</i> |
| <i>Geranium solanderi</i> var. |
| <i>solanderi</i> |
| <i>Glochidion ferdinandi</i> |
| <i>Glochidion ferdinandi</i> var. |
| <i>ferdinandi</i> |
| <i>Glycine clandestina</i> |
| <i>Glycine microphylla</i> |
| <i>Glycine tabacina</i> |
| <i>Glycine tomentella</i> |
| <i>Gomphocarpus fruticosus</i> |
| <i>Gompholobium latifolium</i> |
| <i>Gompholobium pinnatum</i> |
| <i>Gonocarpus micranthus</i> |
| <i>subsp. micranthus</i> |
| <i>Gonocarpus micranthus</i> |
| <i>subsp. ramosissimus</i> |
| <i>Gonocarpus tetragynus</i> |
| <i>Gonocarpus teucrioides</i> |
| <i>Goodenia bellidifolia</i> |
| <i>Goodenia bellidifolia</i> |
| <i>subsp. bellidifolia</i> |
| <i>Goodenia hederacea</i> |
| <i>Goodenia hederacea</i> |
| <i>subsp. hederacea</i> |
| <i>Goodenia heterophylla</i> |
| <i>Goodenia heterophylla</i> |
| <i>subsp. eglandulosa</i> |
| <i>Goodenia heterophylla</i> |
| <i>subsp. heterophylla</i> |
| <i>Goodenia ovata</i> |
| <i>Goodenia paniculata</i> |
| <i>Goodenia spp.</i> |
| <i>Goodenia stelligera</i> |
| <i>Grevillea humilis</i> subsp. |
| <i>humilis</i> |
| <i>Grevillea linearifolia</i> |
| <i>Grevillea parviflora</i> |

| Scientific name |
|------------------------------------|
| <i>Grevillea parviflora</i> subsp. |
| <i>parviflora</i> |
| <i>Grevillea robusta</i> |
| <i>Grevillea sericea</i> |
| <i>Guioa semiglauca</i> |
| <i>Gymnostachys anceps</i> |
| <i>Gynochthodes jasminoides</i> |
| <i>Haemodorum planifolium</i> |
| <i>Haemodorum planifolium</i> |
| <i>subsp. planifolium</i> |
| <i>Hakea dactyloides</i> |
| <i>Hakea laevipes</i> subsp. |
| <i>laevipes</i> |
| <i>Hakea salicifolia</i> |
| <i>Hakea sericea</i> |
| <i>Hakea teretifolia</i> |
| <i>Hardenbergia violacea</i> |
| <i>Harpullia alata</i> |
| <i>Hemarthria uncinata</i> var. |
| <i>uncinata</i> |
| <i>Herbertia lahue</i> subsp. |
| <i>caerulea</i> |
| <i>Hibbertia acicularis</i> |
| <i>Hibbertia aspera</i> |
| <i>Hibbertia aspera</i> subsp. |
| <i>aspera</i> |
| <i>Hibbertia dentata</i> |
| <i>Hibbertia diffusa</i> |
| <i>Hibbertia empetrifolia</i> |
| <i>subsp. empetrifolia</i> |
| <i>Hibbertia obtusifolia</i> |
| <i>Hibbertia riparia</i> |
| <i>Hibbertia scandens</i> |
| <i>Hibbertia serpyllifolia</i> |
| <i>Hibbertia vestita</i> |
| <i>Hibiscus heterophyllus</i> |
| <i>subsp. heterophyllus</i> |
| <i>Hovea linearis</i> |
| <i>Hybanthus monopetalus</i> |
| <i>Hydrocotyle laxiflora</i> |
| <i>Hydrocotyle pedicellosa</i> |
| <i>Hydrocotyle sibthorpioides</i> |
| <i>Hyparrhenia hirta</i> |
| <i>Hypericum gramineum</i> |
| <i>Hypericum japonicum</i> |
| <i>Hypochaeris radicata</i> |
| <i>Hypolepis muelleri</i> |

| Scientific name |
|---|
| <i>Hypoxis hygrometrica</i> |
| <i>Imperata cylindrica</i> |
| <i>Indigofera australis</i> |
| <i>Isolepis</i> spp. |
| <i>Isopogon anemonifolius</i> |
| <i>Jacksonia scoparia</i> |
| <i>Juncus kraussii</i> subsp. <i>australiensis</i> |
| <i>Juncus remotiflorus</i> |
| <i>Juncus subsecundus</i> |
| <i>Juncus usitatus</i> |
| <i>Kennedia rubicunda</i> |
| <i>Kunzea ambigua</i> |
| <i>Lachnagrostis aemula</i> |
| <i>Lagenifera stipitata</i> |
| <i>Lagenophora gracilis</i> |
| <i>Lagenophora stipitata</i> |
| <i>Lambertia formosa</i> |
| <i>Lantana camara</i> |
| <i>Lasiopetalum ferrugineum</i> var. <i>ferrugineum</i> |
| <i>Laxmannia gracilis</i> |
| <i>Lepidosperma gunnii</i> |
| <i>Lepidosperma laterale</i> |
| <i>Lepidosperma neesii</i> |
| <i>Lepidosperma quadrangulatum</i> |
| <i>Lepidosperma</i> spp. |
| <i>Leptocarpus tenax</i> |
| <i>Leptospermum juniperinum</i> |
| <i>Leptospermum polygalifolium</i> |
| <i>Leptospermum polygalifolium</i> subsp. <i>cismontanum</i> |
| <i>Leptospermum polygalifolium</i> subsp. <i>polygalifolium</i> |
| <i>Leptospermum</i> spp. |
| <i>Leptospermum trinervium</i> |
| <i>Lepyrodia scariosa</i> |
| <i>Leucopogon deformis</i> |
| <i>Leucopogon juniperinus</i> |
| <i>Leucopogon microphyllus</i> var. <i>microphyllus</i> |
| <i>Libertia paniculata</i> |

| Scientific name |
|--|
| <i>Ligustrum lucidum</i> |
| <i>Ligustrum sinense</i> |
| <i>Lindsaea linearis</i> |
| <i>Lindsaea microphylla</i> |
| <i>Livistona australis</i> |
| <i>Lobelia dentata</i> |
| <i>Lobelia gibbosa</i> |
| <i>Lobelia purpurascens</i> |
| <i>Lolium perenne</i> |
| <i>Lomandra confertifolia</i> subsp. <i>pallida</i> |
| <i>Lomandra confertifolia</i> subsp. <i>rubiginosa</i> |
| <i>Lomandra cylindrica</i> |
| <i>Lomandra filiformis</i> |
| <i>Lomandra filiformis</i> subsp. <i>filiformis</i> |
| <i>Lomandra glauca</i> |
| <i>Lomandra hystrix</i> |
| <i>Lomandra longifolia</i> |
| <i>Lomandra micrantha</i> subsp. <i>tuberculata</i> |
| <i>Lomandra multiflora</i> subsp. <i>multiflora</i> |
| <i>Lomandra obliqua</i> |
| <i>Lomandra</i> spp. |
| <i>Lomatia silaifolia</i> |
| <i>Lonicera japonica</i> |
| <i>Lophostemon suaveolens</i> |
| <i>Lysimachia arvensis</i> |
| <i>Macrozamia flexuosa</i> |
| <i>Macrozamia spiralis</i> |
| <i>Marsdenia rostrata</i> |
| <i>Megathyrsus maximus</i> |
| <i>Melaleuca decora</i> |
| <i>Melaleuca ericifolia</i> |
| <i>Melaleuca linariifolia</i> |
| <i>Melaleuca nodosa</i> |
| <i>Melaleuca quinquenervia</i> |
| <i>Melaleuca sieberi</i> |
| <i>Melaleuca styphelioides</i> |
| <i>Melaleuca thymifolia</i> |
| <i>Melia azedarach</i> |
| <i>Melichrus urceolatus</i> |
| <i>Melinis repens</i> |
| <i>Microlaena stipoides</i> |

| Scientific name |
|---|
| <i>Microlaena stipoides</i> var. <i>stipoides</i> |
| <i>Microtis parviflora</i> |
| <i>Mirbelia rubiifolia</i> |
| <i>Mischocarpus australis</i> |
| <i>Monotoca scoparia</i> |
| <i>Muellerina eucalyptoides</i> |
| <i>Myrsine howittiana</i> |
| <i>Myrsine variabilis</i> |
| <i>Neolitsea dealbata</i> |
| <i>Notelaea longifolia</i> |
| <i>Notelaea longifolia</i> f. <i>intermedia</i> |
| <i>Notelaea longifolia</i> f. <i>longifolia</i> |
| <i>Notelaea ovata</i> |
| <i>Notelaea venosa</i> |
| <i>Ochna serrulata</i> |
| <i>Olea europaea</i> |
| <i>Opercularia aspera</i> |
| <i>Opercularia diphylla</i> |
| <i>Opercularia hispida</i> |
| <i>Opercularia varia</i> |
| <i>Oplismenus aemulus</i> |
| <i>Oplismenus imbecillis</i> |
| <i>Ottochloa gracillima</i> |
| <i>Oxalis exilis</i> |
| <i>Oxalis perennans</i> |
| <i>Oxytes brachypoda</i> |
| <i>Ozothamnus diosmifolius</i> |
| <i>Palmeria scandens</i> |
| <i>Pandorea pandorana</i> |
| <i>Pandorea pandorana</i> subsp. <i>pandorana</i> |
| <i>Panicum effusum</i> |
| <i>Panicum simile</i> |
| <i>Panicum</i> spp. |
| <i>Parsonsia straminea</i> |
| <i>Paspalidium distans</i> |
| <i>Paspalum dilatatum</i> |
| <i>Paspalum orbiculare</i> |
| <i>Paspalum urvillei</i> |
| <i>Passiflora herbertiana</i> subsp. <i>herbertiana</i> |
| <i>Patersonia fragilis</i> |
| <i>Patersonia glabrata</i> |

| Scientific name |
|---|
| <i>Patersonia sericea</i> |
| <i>Pavonia hastata</i> |
| <i>Pelargonium inodorum</i> |
| <i>Persicaria decipiens</i> |
| <i>Persoonia cornifolia</i> |
| <i>Persoonia laurina</i> subsp. <i>laurina</i> |
| <i>Persoonia levis</i> |
| <i>Persoonia linearis</i> |
| <i>Phalaris aquatica</i> |
| <i>Phragmites australis</i> |
| <i>Phyllanthus hirtellus</i> |
| <i>Phyllostachys aurea</i> |
| <i>Phyllota phyllicoides</i> |
| <i>Pimelea linifolia</i> |
| <i>Pimelea linifolia</i> subsp. <i>linifolia</i> |
| <i>Pittosporum multiflorum</i> |
| <i>Pittosporum revolutum</i> |
| <i>Pittosporum spinescens</i> |
| <i>Pittosporum undulatum</i> |
| <i>Planchonella australis</i> |
| <i>Plantago lanceolata</i> |
| <i>Platycerium bifurcatum</i> |
| <i>Platylobium formosum</i> |
| <i>Platysace ericoides</i> |
| <i>Plectorrhiza tridentata</i> |
| <i>Plectranthus parviflorus</i> |
| <i>Poa sieberiana</i> |
| <i>Podolobium ilicifolium</i> |
| <i>Polymeria calycina</i> |
| <i>Polyscias sambucifolia</i> |
| <i>Pomaderris elliptica</i> subsp. <i>elliptica</i> |
| <i>Pomax umbellata</i> |
| <i>Poranthera ericifolia</i> |
| <i>Portulaca oleracea</i> |
| <i>Prostanthera scutellarioides</i> |
| <i>Pseuderanthemum variabile</i> |
| <i>Psychotria loniceroides</i> |
| <i>Pteridium esculentum</i> |
| <i>Pterostylis acuminata</i> |
| <i>Pterostylis baptistii</i> |
| <i>Pterostylis chaetophora</i> |

| Scientific name |
|--|
| <i>Pterostylis collina</i> |
| <i>Pterostylis concinna</i> |
| <i>Pterostylis curta</i> |
| <i>Pterostylis erecta</i> |
| <i>Pterostylis hispidula</i> |
| <i>Pterostylis longifolia</i> |
| <i>Pterostylis nutans</i> |
| <i>Pterostylis</i> spp. |
| <i>Ptilothrix deusta</i> |
| <i>Pueraria lobata</i> |
| <i>Pultenaea daphnoides</i> |
| <i>Pultenaea euchila</i> |
| <i>Pultenaea flexilis</i> |
| <i>Pultenaea linophylla</i> |
| <i>Pultenaea myrtoides</i> |
| <i>Pultenaea paleacea</i> |
| <i>Pultenaea retusa</i> |
| <i>Pultenaea villosa</i> |
| <i>Pyracantha angustifolia</i> |
| <i>Quintinia sieberi</i> |
| <i>Ranunculus lappaceus</i> |
| <i>Ranunculus plebeius</i> |
| <i>Ranunculus</i> spp. |
| <i>Richardia stellaris</i> |
| <i>Rubus anglocandicans</i> |
| <i>Rubus fruticosus</i> sp. agg. |
| <i>Rubus parvifolius</i> |
| <i>Rytidosperma caespitosum</i> |
| <i>Rytidosperma longifolium</i> |
| <i>Rytidosperma pallidum</i> |
| <i>Rytidosperma</i> spp. |
| <i>Rytidosperma tenuius</i> |
| <i>Samolus repens</i> |
| <i>Sannantha pluriflora</i> |
| <i>Sarcophilus hillii</i> |
| <i>Sarcocornia quinqueflora</i> subsp. <i>quinqueflora</i> |
| <i>Sarcopetalum harveyanum</i> |
| <i>Schizomeria ovata</i> |
| <i>Schoenus apogon</i> |
| <i>Schoenus brevifolius</i> |
| <i>Scutellaria humilis</i> |
| <i>Senecio hispidulus</i> |
| <i>Senecio madagascariensis</i> |
| <i>Senecio</i> spp. |
| <i>Senna pendula</i> var. |

| Scientific name |
|--|
| <i>glabrata</i> |
| <i>Setaria parviflora</i> |
| <i>Setaria sphacelata</i> |
| <i>Setaria</i> spp. |
| <i>Sida rhombifolia</i> |
| <i>Sigesbeckia orientalis</i> subsp. <i>orientalis</i> |
| <i>Smilax australis</i> |
| <i>Smilax glycyphylla</i> |
| <i>Solanum campanulatum</i> |
| <i>Solanum mauritianum</i> |
| <i>Solanum nigrum</i> |
| <i>Solanum pseudocapsicum</i> |
| <i>Solanum seaforthianum</i> |
| <i>Solenogyne bellioides</i> |
| <i>Sonchus oleraceus</i> |
| <i>Sphaerolobium minus</i> |
| <i>Sphaerolobium vimineum</i> |
| <i>Sporadanthus caudatus</i> |
| <i>Sporobolus africanus</i> |
| <i>Sporobolus diander</i> |
| <i>Sporobolus fertilis</i> |
| <i>Sporobolus pyramidalis</i> |
| <i>Sporobolus</i> spp. |
| <i>Sporobolus virginicus</i> |
| <i>Sporobolus virginicus</i> var. <i>virginicus</i> |
| <i>Stackhousia viminea</i> |
| <i>Stephania japonica</i> |
| <i>Stephania japonica</i> var. <i>discolor</i> |
| <i>Streblus brunonianus</i> |
| <i>Stylidium graminifolium</i> |
| <i>Styphelia triflora</i> |
| <i>Suaeda australis</i> |
| <i>Syncarpia glomulifera</i> |
| <i>Syzygium australe</i> |
| <i>Taraxacum officinale</i> |
| <i>Tetrraria capillaris</i> |
| <i>Tetrrarrhena juncea</i> |
| <i>Tetrratheca ericifolia</i> |
| <i>Tetrratheca juncea</i> |
| <i>Tetrratheca thymifolia</i> |
| <i>Thelymitra pauciflora</i> |
| <i>Themeda triandra</i> |
| <i>Thunbergia alata</i> |

| Scientific name |
|--|
| <i>Thysanotus juncifolius</i> |
| <i>Thysanotus tuberosus</i> |
| <i>Thysanotus tuberosus</i> <i>subsp. tuberosus</i> |
| <i>Tradescantia fluminensis</i> |
| <i>Tricoryne elatior</i> |
| <i>Tricoryne simplex</i> |
| <i>Triglochin striata</i> |
| <i>Tristaniopsis laurina</i> |
| <i>Tylophora barbata</i> |
| <i>Typha orientalis</i> |
| <i>Urochloa panicoides</i> |
| <i>Velleia spathulata</i> |

| Scientific name |
|--|
| <i>Verbena bonariensis</i> |
| <i>Verbena quadrangularis</i> |
| <i>Verbena rigida</i> var. <i>rigida</i> |
| <i>Vernonia cinerea</i> |
| <i>Vernonia cinerea</i> var. <i>cinerea</i> |
| <i>Veronica plebeia</i> |
| <i>Viola betonicifolia</i> |
| <i>Viola hederacea</i> |
| <i>Vittadinia cuneata</i> |
| <i>Wahlenbergia communis</i> |
| <i>Wahlenbergia gracilis</i> |
| <i>Waterhousea floribunda</i> |

| Scientific name |
|--|
| <i>Woollsia pungens</i> |
| <i>Xanthorrhoea fulva</i> |
| <i>Xanthorrhoea latifolia</i> |
| <i>Xanthorrhoea latifolia</i> <i>subsp. latifolia</i> |
| <i>Xanthorrhoea macronema</i> |
| <i>Xanthorrhoea</i> <i>malacophylla</i> |
| <i>Xanthorrhoea resinosa</i> |
| <i>Xylomelum pyriforme</i> |
| <i>Zieria smithii</i> |

APPENDIX 4 – FAUNA SPECIES LIST

Fauna found within 5000m of flora reserve, desktop search undertaken August 2021

| Amphibians and reptiles | |
|-----------------------------------|-------------------------|
| Scientific name | Common name |
| <i>Pseudophryne bibronii</i> | Bibron's Toadlet |
| <i>Litoria latopalmata</i> | Broad-palmed Frog |
| <i>Limnodynastes peronii</i> | Brown-striped Frog |
| <i>Crinia signifera</i> | Common Eastern Froglet |
| <i>Uperoleia fusca</i> | Dusky Toadlet |
| <i>Litoria fallax</i> | Eastern Dwarf Tree Frog |
| <i>Litoria caerulea</i> | Green Tree Frog |
| <i>Litoria peronii</i> | Peron's Tree Frog |
| <i>Pseudophryne coriacea</i> | Red-backed Toadlet |
| <i>Limnodynastes tasmaniensis</i> | Spotted Grass Frog |
| <i>Adelotus brevis</i> | Tusked Frog |
| <i>Litoria tyleri</i> | Tyler's Tree Frog |
| <i>Litoria</i> | Verreaux's |

| Amphibians and reptiles | |
|---------------------------------|------------------------------|
| Scientific name | Common name |
| <i>verreauxii</i> | Frog |
| <i>Uperoleia sp.</i> | |
| <i>Pogona barbata</i> | Bearded Dragon |
| <i>Dendrelaphis punctulatus</i> | Common Tree Snake |
| <i>Lampropholis delicata</i> | Dark-flecked Garden Sunskink |
| <i>Morelia spilota spilota</i> | Diamond Python |
| <i>Tiliqua scincoides</i> | Eastern Blue-tongue |
| <i>Pseudonaja textilis</i> | Eastern Brown Snake |
| <i>Chelodina longicollis</i> | Eastern Snake-necked Turtle |
| <i>Intellagama lesueurii</i> | Eastern Water Dragon |
| <i>Eulamprus quoyii</i> | Eastern Water-skink |
| <i>Lampropholis amicala</i> | Friendly Sunskink |

| Amphibians and reptiles | |
|---------------------------------|--------------------------|
| Scientific name | Common name |
| <i>Cacophis squamulosus</i> | Golden-crowned Snake |
| <i>Chelonia mydas</i> | Green Turtle |
| <i>Amphibolurus muricatus</i> | Jacky Lizard |
| <i>Varanus varius</i> | Lace Monitor |
| <i>Bellatorias major</i> | Land Mullet |
| <i>Pseudechis porphyriacus</i> | Red-bellied Black Snake |
| <i>Ctenotus robustus</i> | Robust Ctenotus |
| <i>Nebulifera robusta</i> | Robust Velvet Gecko |
| <i>Hoplocephalus stephensii</i> | Stephens' Banded Snake |
| <i>Pseudechis sp.</i> | Unidentified Black Snake |
| <i>Varanus sp.</i> | Unidentified Goanna |
| <i>Cheloniidae sp.</i> | unidentified sea turtle |

| Birds | |
|---------------------------------|---------------------------|
| Scientific name | Common name |
| <i>Alectura lathami</i> | Australian Brush-turkey |
| <i>Falco longipennis</i> | Australian Hobby |
| <i>Alisterus scapularis</i> | Australian King-Parrot |
| <i>Gymnorhina tibicen</i> | Australian Magpie |
| <i>Aegotheles cristatus</i> | Australian Owlet-nightjar |
| <i>Pelecanus conspicillatus</i> | Australian Pelican |
| <i>Corvus</i> | Australian |

| Birds | |
|-----------------------------------|---------------------------|
| Scientific name | Common name |
| <i>coronoides</i> | Raven |
| <i>Threskiornis moluccus</i> | Australian White Ibis |
| <i>Chenonetta jubata</i> | Australian Wood Duck |
| <i>Geopelia humeralis</i> | Bar-shouldered Dove |
| <i>Cygnus atratus</i> | Black Swan |
| <i>Coracina novaehollandiae</i> | Black-faced Cuckoo-shrike |
| <i>Ephippiorhynchus asiaticus</i> | Black-necked Stork |

| Birds | |
|----------------------------------|-------------------------|
| Scientific name | Common name |
| <i>Entomyzon cyanotis</i> | Blue-faced Honeyeater |
| <i>Haliastur indus</i> | Brahminy Kite |
| <i>Gerygone mouki</i> | Brown Gerygone |
| <i>Synoicus ypsilophora</i> | Brown Quail |
| <i>Acanthiza pusilla</i> | Brown Thornbill |
| <i>Melithreptus brevirostris</i> | Brown-headed Honeyeater |
| <i>Acanthiza reguloides</i> | Buff-rumped Thornbill |

| Birds | |
|--|---------------------------|
| Scientific name | Common name |
| <i>Burhinus grallarius</i> | Bush Stone-curlew |
| <i>Scythrops novaehollandiae</i> | Channel-billed Cuckoo |
| <i>Hylacola pyrrhopygia</i> | Chestnut-rumped Heathwren |
| <i>Accipiter cirrocephalus</i> | Collared Sparrowhawk |
| <i>Acridotheres tristis</i> | Common Myna |
| <i>Ocyphaps lophotes</i> | Crested Pigeon |
| <i>Platycercus elegans</i> | Crimson Rosella |
| <i>Eurystomus orientalis</i> | Dollarbird |
| <i>Tyto javanica</i> | Eastern Barn Owl |
| <i>Tyto longimembris</i> | Eastern Grass Owl |
| <i>Eudynamys orientalis</i> | Eastern Koel |
| <i>Platycercus eximius</i> | Eastern Rosella |
| <i>Falcunculus frontatus frontatus</i> | Eastern Shrike-tit |
| <i>Acanthorhynchus tenuirostris</i> | Eastern Spinebill |
| <i>Psophodes olivaceus</i> | Eastern Whipbird |
| <i>Eopsaltria australis</i> | Eastern Yellow Robin |
| <i>Dromaius novaehollandiae</i> | Emu |
| <i>Cacomantis flabelliformis</i> | Fan-tailed Cuckoo |
| <i>Corvus tasmanicus</i> | Forest Raven |
| <i>Eolophus roseicapilla</i> | Galah |
| <i>Calyptorhynchus lathami</i> | Glossy Black-Cockatoo |
| <i>Pachycephala pectoralis</i> | Golden Whistler |
| <i>Phalacrocorax carbo</i> | Great Cormorant |
| <i>Cracticus torquatus</i> | Grey Butcherbird |
| <i>Rhipidura albiscapa</i> | Grey Fantail |
| <i>Colluricincla</i> | Grey Shrike- |

| Birds | |
|---|---|
| Scientific name | Common name |
| <i>harmonica</i> | thrush |
| <i>Anas gracilis</i> | Grey Teal |
| <i>Pomatostomus temporalis temporalis</i> | Grey-crowned Babbler (eastern subspecies) |
| <i>Melanodryas cucullata cucullata</i> | Hooded Robin (south-eastern form) |
| <i>Microeca fascians</i> | Jacky Winter |
| <i>Gallinago hardwickii</i> | Latham's Snipe |
| <i>Dacelo novaeguineae</i> | Laughing Kookaburra |
| <i>Myiagra rubecula</i> | Leaden Flycatcher |
| <i>Meliphaga lewinii</i> | Lewin's Honeyeater |
| <i>Cacatua sanguinea</i> | Little Corella |
| <i>Glossopsitta pusilla</i> | Little Lorikeet |
| <i>Microcarbo melanoleucos</i> | Little Pied Cormorant |
| <i>Grallina cyanoleuca</i> | Magpie-lark |
| <i>Vanellus miles</i> | Masked Lapwing |
| <i>Tyto novaehollandiae</i> | Masked Owl |
| <i>Dicaeum hirundinaceum</i> | Mistletoebird |
| <i>Glossopsitta concinna</i> | Musk Lorikeet |
| <i>Falco cenchroides cenchroides</i> | Nankeen Kestrel |
| <i>Phylidonyris novaehollandiae</i> | New Holland Honeyeater |
| <i>Philemon corniculatus</i> | Noisy Friarbird |
| <i>Manorina melanocephala</i> | Noisy Miner |
| <i>Oriolus sagittatus</i> | Olive-backed Oriole |
| <i>Anas superciliosa</i> | Pacific Black Duck |
| <i>Turnix varius</i> | Painted Button-quail |
| <i>Geopelia striata</i> | Peaceful Dove |
| <i>Falco peregrinus</i> | Peregrine Falcon |

| Birds | |
|--|--------------------------|
| Scientific name | Common name |
| <i>Cracticus nigrogularis</i> | Pied Butcherbird |
| <i>Phalacrocorax varius</i> | Pied Cormorant |
| <i>Strepera graculina</i> | Pied Currawong |
| <i>Ninox strenua</i> | Powerful Owl |
| <i>Porphyrio porphyrio</i> | Purple Swampheaven |
| <i>Trichoglossus haematodus</i> | Rainbow Lorikeet |
| <i>Anthochaera carunculata</i> | Red Wattlebird |
| <i>Neochmia temporalis</i> | Red-browed Finch |
| <i>Pachycephala rufiventris</i> | Rufous Whistler |
| <i>Todiramphus sanctus</i> | Sacred Kingfisher |
| <i>Ptilonorhynchus violaceus</i> | Satin Bowerbird |
| <i>Trichoglossus chlorolepidotus</i> | Scaly-breasted Lorikeet |
| <i>Myzomela sanguinolenta</i> | Scarlet Honeyeater |
| <i>Chalcites lucidus</i> | Shining Bronze-Cuckoo |
| <i>Chroicocephalus novaehollandiae</i> | Silver Gull |
| <i>Zosterops lateralis</i> | Silvereye |
| <i>Stipiturus malachurus</i> | Southern Emu-wren |
| <i>Circus assimilis</i> | Spotted Harrier |
| <i>Pardalotus punctatus</i> | Spotted Pardalote |
| <i>Spilopelia chinensis</i> | Spotted Turtle-Dove |
| <i>Pardalotus striatus</i> | Striated Pardalote |
| <i>Acanthiza lineata</i> | Striated Thornbill |
| <i>Cacatua galerita</i> | Sulphur-crested Cockatoo |
| <i>Malurus cyaneus</i> | Superb Fairy-wren |
| <i>Lathamus discolor</i> | Swift Parrot |
| <i>Podargus strigoides</i> | Tawny Frogmouth |

| Birds | |
|---------------------------------------|-----------------------------|
| Scientific name | Common name |
| <i>Lopholaimus antarcticus</i> | Topknot Pigeon |
| <i>Corvus orru</i> | Torresian Crow |
| <i>Neophema pulchella</i> | Turquoise Parrot |
| <i>Calyptorhynchus sp.</i> | Unidentified Black-cockatoo |
| <i>Cracticus sp.</i> | Unidentified Butcherbird |
| <i>Phalacrocorax sp.</i> | Unidentified Cormorant |
| <i>Trichoglossus Glossopsitta sp.</i> | Unidentified Lorikeet |
| <i>Platycercus sp.</i> | Unidentified Rosella |
| <i>Daphoenositta chrysoptera</i> | Varied Sittella |
| <i>Malurus lamberti</i> | Variegated Fairy-wren |
| <i>Aquila audax</i> | Wedge-tailed Eagle |
| <i>Hirundo neoxena</i> | Welcome Swallow |

| Birds | |
|--------------------------------|-----------------------------|
| Scientific name | Common name |
| <i>Numenius phaeopus</i> | Whimbrel |
| <i>Haliastur sphenurus</i> | Whistling Kite |
| <i>Coracina papuensis</i> | White-bellied Cuckoo-shrike |
| <i>Haliaeetus leucogaster</i> | White-bellied Sea-Eagle |
| <i>Sericornis frontalis</i> | White-browed Scrubwren |
| <i>Phylidonyris niger</i> | White-cheeked Honeyeater |
| <i>Egretta novaehollandiae</i> | White-faced Heron |
| <i>Columba leucomela</i> | White-headed Pigeon |
| <i>Melithreptus lunatus</i> | White-naped Honeyeater |
| <i>Gerygone olivacea</i> | White-throated Gerygone |
| <i>Hirundapus caudacutus</i> | White-throated Needletail |

| Birds | |
|--------------------------------|------------------------------|
| Scientific name | Common name |
| <i>Eurostopodus mystacalis</i> | White-throated Nightjar |
| <i>Cormobates leucophaea</i> | White-throated Treecreeper |
| <i>Corcorax melanorhamphos</i> | White-winged Chough |
| <i>Rhipidura leucophrys</i> | Willie Wagtail |
| <i>Leucosarcia melanoleuca</i> | Wonga Pigeon |
| <i>Acanthiza nana</i> | Yellow Thornbill |
| <i>Caligavis chrysops</i> | Yellow-faced Honeyeater |
| <i>Zanda funereus</i> | Yellow-tailed Black-Cockatoo |
| <i>Lichenostomus melanops</i> | Yellow-tufted Honeyeater |

| Mammals | |
|---------------------------------|-------------------------|
| Scientific name | Common name |
| <i>Vombatus ursinus</i> | Bare-nosed Wombat |
| <i>Rattus rattus</i> | Black Rat |
| <i>Tursiops truncatus</i> | Bottlenose Dolphin |
| <i>Antechinus stuartii</i> | Brown Antechinus |
| <i>Trichosurus sp.</i> | brush-tail possum |
| <i>Rattus fuscipes</i> | Bush Rat |
| <i>Felis catus</i> | Cat |
| <i>Chalinolobus morio</i> | Chocolate Wattled Bat |
| <i>Trichosurus vulpecula</i> | Common Brushtail Possum |
| <i>Sminthopsis murina</i> | Common Dunnart |
| <i>Pseudocheirus peregrinus</i> | Common Ringtail Possum |
| <i>Osphranter</i> | Common |

| Mammals | |
|--------------------------------|---------------------------------|
| Scientific name | Common name |
| <i>robustus</i> | Wallaroo |
| <i>Canis lupus</i> | Dingo, domestic dog |
| <i>Scotorepens orion</i> | Eastern Broad-nosed Bat |
| <i>Vespadelus trougtoni</i> | Eastern Cave Bat |
| <i>Micronomus norfolkensis</i> | Eastern Coastal Free-tailed Bat |
| <i>Vespadelus pumilus</i> | Eastern Forest Bat |
| <i>Ozimops ridei</i> | Eastern Free-tailed Bat |
| <i>Macropus giganteus</i> | Eastern Grey Kangaroo |
| <i>Acrobates pygmaeus</i> | Feathertail Glider |

| Mammals | |
|---------------------------------------|-------------------------|
| Scientific name | Common name |
| <i>Pteropus sp.</i> | Flying-fox |
| <i>Vulpes vulpes</i> | Fox |
| <i>Chalinolobus gouldii</i> | Gould's Wattled Bat |
| <i>Scoteanax rueppellii</i> | Greater Broad-nosed Bat |
| <i>Pteropus poliocephalus</i> | Grey-headed Flying-fox |
| <i>Mus musculus</i> | House Mouse |
| <i>Macropus sp.</i> | kangaroo / wallaby |
| <i>Phascolarctos cinereus</i> | Koala |
| <i>Miniopterus orianae oceanensis</i> | Large Bent-winged Bat |
| <i>Nyctophilus geoffroyi</i> | Lesser Long-eared Bat |
| <i>Miniopterus australis</i> | Little Bent-winged Bat |

| Mammals | |
|---------------------------------|---------------------------|
| Scientific name | Common name |
| <i>Vespadelus vulturnus</i> | Little Forest Bat |
| <i>Mormopterus planiceps</i> | Little Mastiff-bat |
| <i>Perameles nasuta</i> | Long-nosed Bandicoot |
| <i>Antechinus mimetes</i> | Mainland Dusky Antechinus |
| <i>Isoodon macrourus</i> | Northern Brown Bandicoot |
| <i>Ornithorhynchus anatinus</i> | Platypus |
| <i>Oryctolagus cuniculus</i> | Rabbit |
| <i>Rattus sp.</i> | rat |
| <i>Notamacropus</i> | Red-necked |

| Mammals | |
|-------------------------------|-------------------------|
| Scientific name | Common name |
| <i>rufogriseus</i> | Wallaby |
| <i>Tachyglossus aculeatus</i> | Short-beaked Echidna |
| <i>Myotis macropus</i> | Southern Myotis |
| <i>Dasyurus maculatus</i> | Spotted-tailed Quoll |
| <i>Petaurus norfolcensis</i> | Squirrel Glider |
| <i>Petaurus breviceps</i> | Sugar Glider |
| <i>Rattus lutreolus</i> | Swamp Rat |
| <i>Wallabia bicolor</i> | Swamp Wallaby |
| <i>Antechinus sp.</i> | Unidentified Antechinus |
| <i>Isoodon/Perameles sp.</i> | unidentified Bandicoot |

| Mammals | |
|------------------------------|----------------------------|
| Scientific name | Common name |
| <i>Canidae sp.</i> | unidentified canid |
| <i>Dasyuridae sp.</i> | unidentified dasyurid |
| <i>Cervus sp.</i> | Unidentified Deer |
| <i>Macropod sp.</i> | unidentified macropod |
| <i>Austronomus australis</i> | White-striped Freetail-bat |
| <i>Petaurus australis</i> | Yellow-bellied Glider |
| <i>Antechinus flavipes</i> | Yellow-footed Antechinus |

| Insects | |
|---------------------------|---------------|
| Scientific name | Common name |
| <i>Hypocysta metirius</i> | Brown Ringlet |

| Crustaceans | |
|--------------------------|-------------|
| Scientific name | Common name |
| <i>Cherax destructor</i> | Dam Yabby |

APPENDIX 5 – APPROVAL AND AMENDMENTS FROM PREVIOUS VERSION

In line with section 25 of the *Forestry Act 2012*, flora reserve working plans and any amendments must be approved by the Minister. This plan forms part of the working plans for each of the individual flora reserves listed in section 6.

This plan was approved by The Hon. Tara Moriarty MLC, Minister for Agriculture, Minister for Regional New South Wales and Minister for Western New South Wales

Date of approval: 6/9/23

| Version | Changes | Approval details |
|---------|---|--|
| 2.0 | <ul style="list-style-type: none">» Reference to the <i>Flora Reserve Plan: Background and General Management</i>» Formatting updated» Change | <ul style="list-style-type: none">» The Hon. Tara Moriarty MLC, Minister for Agriculture, Minister for Regional New South Wales and Minister for Western New South Wales, 6/9/23 |