



# RICHTERS CAVES FLORA RESERVE NO. 66

---

SITE SPECIFIC WORKING PLAN

## Table of Contents

<b>1. Details of the Reserve</b>	<b>3</b>
1.1 Location	3
1.2 Key Attributes of the reserve	3
1.3 General Description	3
1.4 History	4
1.5 Current Usage	5
<b>2. System of Management</b>	<b>5</b>
2.1 Objectives of Management	5
2.2 Management Strategies	5
2.3 Management Responsibility	7
2.4 Monitoring, Reporting and Review	7
<b>3. List of Appendices</b>	<b>8</b>
<b>Appendix 1 – Locality Map</b>	<b>9</b>
<b>Appendix 2 – Forest Type Map</b>	<b>10</b>
<b>Appendix 3 – Flora Species List</b>	<b>11</b>
<b>Appendix 4 – Fauna Species List</b>	<b>17</b>
<b>Appendix 5 – Approval and Amendments from previous version</b>	<b>22</b>

This site-specific working describes the important values of an individual flora reserve and identifies site-specific priorities for management. The plan is to be read in conjunction with the Flora Reserve Plan: Background and General Management document, which identifies Forestry Corporation's broad objectives and strategies for managing flora reserves. These two documents together form the flora reserve working plan in line with the requirements of section 25 of the *Forestry Act 2012*.

## 1. DETAILS OF THE RESERVE

### 1.1 LOCATION

Richters Caves Flora Reserve is located 10 kilometres west of Wyong, situated in Ourimbah State Forest. See Locality Map in Appendix 1.

### 1.2 KEY ATTRIBUTES OF THE RESERVE

Under the *Forestry Act 2012*, flora reserves are set apart for the preservation of native flora.

The reserve possesses the following identified attributes that are to be protected:

- » the landscape value of the sandstone cliffs and caves in the reserve
- » an abundance and variety of epiphytic and terrestrial orchids which feature at this site
- » representative examples of forest ecosystems in the area.

### 1.3 GENERAL DESCRIPTION

#### Area

Richters Caves Flora Reserve comprises approximately 22 hectares in size. The reserve's boundaries are defined by Campbells Point Road on the western side and creek lines (being tributaries of Chandlers Creek) on the southern, eastern, and northern sides.

#### Topography

The reserve is generally rugged, with cliffs and narrow shelves dissecting the steep slopes. The whole reserve consists of a spur coming from Campbells Point, at a spot known as 'The Pig Sties'. This spur falls in a generally easterly direction from an elevation of 260 metres to 60 metres above sea level. It is drained by the ephemeral creeks forming the north, east, and south boundaries.

#### Geology and soils

Geology and soils are derived from the Triassic Hawkesbury Sandstone, overlaying sandstone of the Gosford Formation. The former has massive outcrops giving the characteristic cliff line and cave formation which are a feature of the reserve. The weathering of the rock face has left some striking caves, with well developed sandstone veils and honeycombs. Loose rocks and boulders have broken away from the cliff line and lie scattered along the mid-slopes of the reserve. The soils range from skeletal and sandy on the upper slopes to deeper and more fertile podzolics below.

#### Climate

Climate of the reserve is essentially mild, with some coastal influence. Climate data for Kulnura, which is 10 kilometres to the northwest, show average temperatures of 26°C in January and 15°C in July. The exposed upper slope of the reserve would be subject to a far greater temperature range than the

Document title: Richters Caves Site Specific Working Plan	Version No.: 2	Page 3 of 22
Document ID: D21/18970	Owner: Senior Manager Forest Stewardship	Issue date: 6/9/23
		Review date: 6/9/33

**WARNING: a printed copy of this document may be uncontrolled. Please verify this is the latest version prior to use.**

sheltered lower slope. Average rainfall is estimated at 1200mm a year, with a late summer/autumn peak. Westerly winds prevail during the drier winter/spring months, but the easterly aspect of the reserve provides protection.

## Vegetation / flora and fauna

Vegetation within the reserve varies as the elevation and exposure changes. Appendix 2 Map shows the various forest types and their locations within the reserve. The forest types present are:

- » Blueleaved Stringybark (forest type 121) – covers approximately 1 hectare. This occurrence is a regrowth stand of Blueleaved Stringybark (*Eucalyptus agglomerata*), along with Grey Ironbark (*E. paniculata*), located in the north-western corner of the reserve. Understorey is very open, reflecting the dry nature of the site (above the cliffs) and the frequency of fire occurrence.
- » Narrowleaved White Mahogany – Red Mahogany – Grey Ironbark – Grey Gum (forest type 60) – covers approximately 11 hectares. The type here is dominated by White Mahogany (*E. acmenioides*) and Roughbarked Apple (*Angophora floribunda*). The understorey changes from xerophytic to mesophytic with decreasing elevation. Native Holly (*Oxylobium ilicifolium*) and Tickbush (*Kunzea ambigua*) give way to Forest Oak, wattle species, and vines.
- » Roundleaved Gum-Turpentine (forest type 52) – covers approximately 10 hectares. The type here is typically dominated by Roundleaved Gum (*E. deanei*) with a dense understorey of Ironwood (*Choricarpia leptopetala*). Rainforest species occur towards the gully bottoms.

Of special note are the epiphytic and terrestrial orchids which are one of the features leading to the setting aside of Richters Caves Flora Reserve. Their abundance and variety are unusual. Appendices 3 and 4 outline a list of flora and fauna species known to occur within the reserve.

## 1.4 HISTORY

### Aboriginal History and Cultural Values

Richters Caves Flora Reserve is situated within the boundary of the Darkinjung Local Aboriginal Land Council and there are a number of Aboriginal cultural heritage sites located within or within the surrounding area. The area is part of a cultural landscape, used for everyday and ceremonial activities including seasonal food and resource gathering and also as a travel route from the mountains to the coast. Tangible aspects of these activities are evident as walking tracks and scar trees, the remains of camp sites with stone tools (isolated stone artefact and artefact scatters) as well as sacred features and places created at the beginning of time.

### Post European Settlement

#### Harvesting

The area is part of Ourimbah State Forest, which was dedicated on 15<sup>th</sup> December 1916. Since that time, it has been managed extensively, as with surrounding areas, for timber production and other purposes. However, the rugged nature of most of the reserve area has precluded large scale timber harvesting, though the ridgeline above the cliffs has been intensively harvested because of its accessibility. Only one or two very old stumps are evident below. None of the area has been silviculturally treated.

#### Fire

Fire has been part of the Australian landscape for at least the last 60,000 years and most forests have experienced fire multiple times over many centuries. The north-western edge has been subjected to hazard reduction burning. It is unlikely that most of the reserve area has been burnt by any severe wildfire, but the western portion of the reserve was burnt in 1965.

Document title: Richters Caves Site Specific Working Plan	Version No.: 2	Page 4 of 22
Document ID: D21/18970	Owner: Senior Manager Forest Stewardship	Issue date: 6/9/23
		Review date: 6/9/33

**WARNING: a printed copy of this document may be uncontrolled. Please verify this is the latest version prior to use.**

## Recreation

Recreation use has probably never been highly significant, even though local parties have been viewing the caves since 1890. There is some evidence of vandalism through removal of protected plants, graffiti on the rock walls, and broken off sandstone formations. Nevertheless, these effects have been minimized by the relative remoteness and ruggedness of the area. Pedestrian access has not caused obvious tracks to appear, except in a couple of spots.

A gate was erected on the access along Campbells Point Road, specifically to deter removal of plants on a systematic basis. The following sign was erected adjacent to the most commonly used pedestrian access point:

'Forestry Commission of NSW. Please assist us to preserve the unusual native plants and rock formations which occur in this area.'

## Establishment of Flora Reserve

The earliest dated European use was in 1890, when the site was visited by a local sawmiller, J.E. Richter. Although he was unlikely to have been the first settler to discover the caves, his visit is recorded by the engraving he has left on a rock face. The area is now known as 'Richters Caves'.

The features of the area were first brought to official notice in 1956, and the then Forestry Commission was anxious to minimize usage and visitor damage. The area was officially accepted as Richters Caves Forest Preserve No. 153 in 1976.

The area was gazetted as Flora Reserve No. 80026 on 1 February 1985. In a general renumbering of Flora Reserves in the Government Gazette of 24 July 1987, the reserve became Richters Caves Flora Reserve No. 66.

## 1.5 CURRENT USAGE

The reserve receives moderate recreational usage, the area is visited by the few local residents who know how to find it. Whist other visitors frequently pass along Campbells Point Road without visiting the caves. The only development on the reserve is a sign erected adjacent to the most commonly used pedestrian access point. Campbells Point Road forms part of the boundary and serves as the only practical point of access.

## 2. SYSTEM OF MANAGEMENT

### 2.1 OBJECTIVES OF MANAGEMENT

Under the *Forestry Act 2012*, flora reserves are set apart for the preservation of native flora. The objectives of Richters Caves Flora Reserve are to:

- » protect the landscape value of the sandstone cliffs and caves in the reserve
- » preserve the abundance and variety of epiphytic and terrestrial orchids which feature at this site
- » protect representative examples of forest ecosystems in the area
- » protect Aboriginal cultural heritage sites and cultural values.

### 2.2 MANAGEMENT STRATEGIES

Document title: Richters Caves Site Specific Working Plan	Version No.: 2	Page 5 of 22
Document ID: D21/18970	Owner: Senior Manager Forest Stewardship	Issue date: 6/9/23
		Review date: 6/9/33

**WARNING: a printed copy of this document may be uncontrolled. Please verify this is the latest version prior to use.**

The broad management strategies and related actions to preserve native flora and improve the value and extent of habitat in State Forest flora reserves are detailed in the Flora Reserve Management Plan: Background and General Management document, which is to be read in conjunction with this plan. Specific additional management strategies applied in this flora reserve may include:

- » Property maintenance, through:
  - establishment and maintenance of appropriate fences, gates and signs
  - removal of unnecessary fencing
  - maintenance of roads and trails
  - restricting visitor use to walking trails for educational activities.
- » Conservation and improvement of habitat, through:
  - maintenance of native vegetation, which may include manipulation by mechanical means for habitat improvement
  - regeneration of cleared or degraded land, through plantings and natural recruitment
  - weed control
  - removal of rubbish
  - management of human disturbance, including harvesting and other forest product operations
  - retention of dead timber and other habitat resources
  - fire management, including cultural burning in a manner consistent with maintaining the health of forest ecosystems and in consultation with local Aboriginal communities.
- » Pest animal control.

## Cultural Values

Explore opportunities for Aboriginal community involvement in managing the flora reserve.

## Weeds

The vegetation within the flora reserve is in very healthy state with no obvious weeds present. As far as reasonably practicable, exotic species will be controlled, as detailed in section 2.4.

## Trail maintenance

Maintenance of roads and trails is important to enable access to the forest for forest management, firefighting, tourism and recreation. Poorly maintained roads can also transport significant levels of sediment, increasing the turbidity of water within creeks. This consequently reduces habitat quality and aquatic biodiversity and can take significant periods of time to recover.

## Permitted activities

Under the Forest Management Zoning (FMZ) system, Richters Caves Flora Reserve №. 66 is a dedicated reserve zoned FMZ 1 and therefore contributes to the dedicated reserve system in the Lower North East Region. Management will be consistent with the requirements of JANIS dedicated reserves.

The latest operational guide detailing activities not permitted in FMZ1 is published on the Forestry Corporation website.

The following activities may be permitted subject to standard conditions approved by the delegated Manager and consistent with the management objectives for the reserve, relevant codes of practice, forest practices / operational circulars, protocols, licenses, and management / recovery plans:

Document title: Richters Caves Site Specific Working Plan	Version No.: 2	Page 6 of 22
Document ID: D21/18970	Owner: Senior Manager Forest Stewardship	Issue date: 6/9/23
		Review date: 6/9/33

**WARNING: a printed copy of this document may be uncontrolled. Please verify this is the latest version prior to use.**

- » scientific studies (e.g., fauna surveys including trapping)
- » maintenance of existing roads and fire trails
- » maintenance of existing recreation facilities and upgrading where necessary to keep pace with demand while protecting the attributes of the reserve
- » limited tree and or limb removal for safety, viewing or construction of facilities in areas used for recreation
- » pest animal and weed control
- » general access for activities such as bush walking, photography, and nature study
- » beekeeping (existing set-down sites may be used)
- » Aboriginal use of forest products consistent with the maintenance of the conservation attributes to be protected in the reserve
- » fire management will be undertaken in a manner consistent with maintaining the health of forest ecosystems.

The following activities may only be permitted with special conditions:

- » Construction of new roads. Construction will only be permitted in exceptional instances and consistent with the following principles:
  - no practical alternative is available
  - the attributes of the reserve will not be significantly affected by the road or fire trail
  - opportunity is provided for public comment on the proposal, obtained through advertising in the local newspaper, either print or online, or by publication on a website considered reasonably likely to come to the attention of members of the local community
  - Ministerial approval is given for the proposal.

## Mining

The reserve was exempted from the provisions of the *Mining Act 1992* by notice in the Government Gazette of 1<sup>st</sup> November 1985.

## 2.3 MANAGEMENT RESPONSIBILITY

The reserve will be administered by Forestry Corporation of NSW's Hardwood Forests Division, with the authority for decision making delegated to the Senior Manager Forest Stewardship or equivalent level manager.

## 2.4 MONITORING, REPORTING AND REVIEW

The region will monitor changes to the key attributes of the reserve and will review the effectiveness of the management strategies designed to protect those attributes and to achieve the management objectives.

The results of this monitoring, review and management response will be included in annual reporting processes.

The provisions of this working plan will be amended, if necessary, in light of the results of the monitoring program and / or legislative change and with the approval of the Minister administering the *Forestry Act 2012*.

Document title: Richters Caves Site Specific Working Plan	Version No.: 2	Page 7 of 22
Document ID: D21/18970	Owner: Senior Manager Forest Stewardship	Issue date: 6/9/23
		Review date: 6/9/33

**WARNING: a printed copy of this document may be uncontrolled. Please verify this is the latest version prior to use.**

### 3. LIST OF APPENDICES

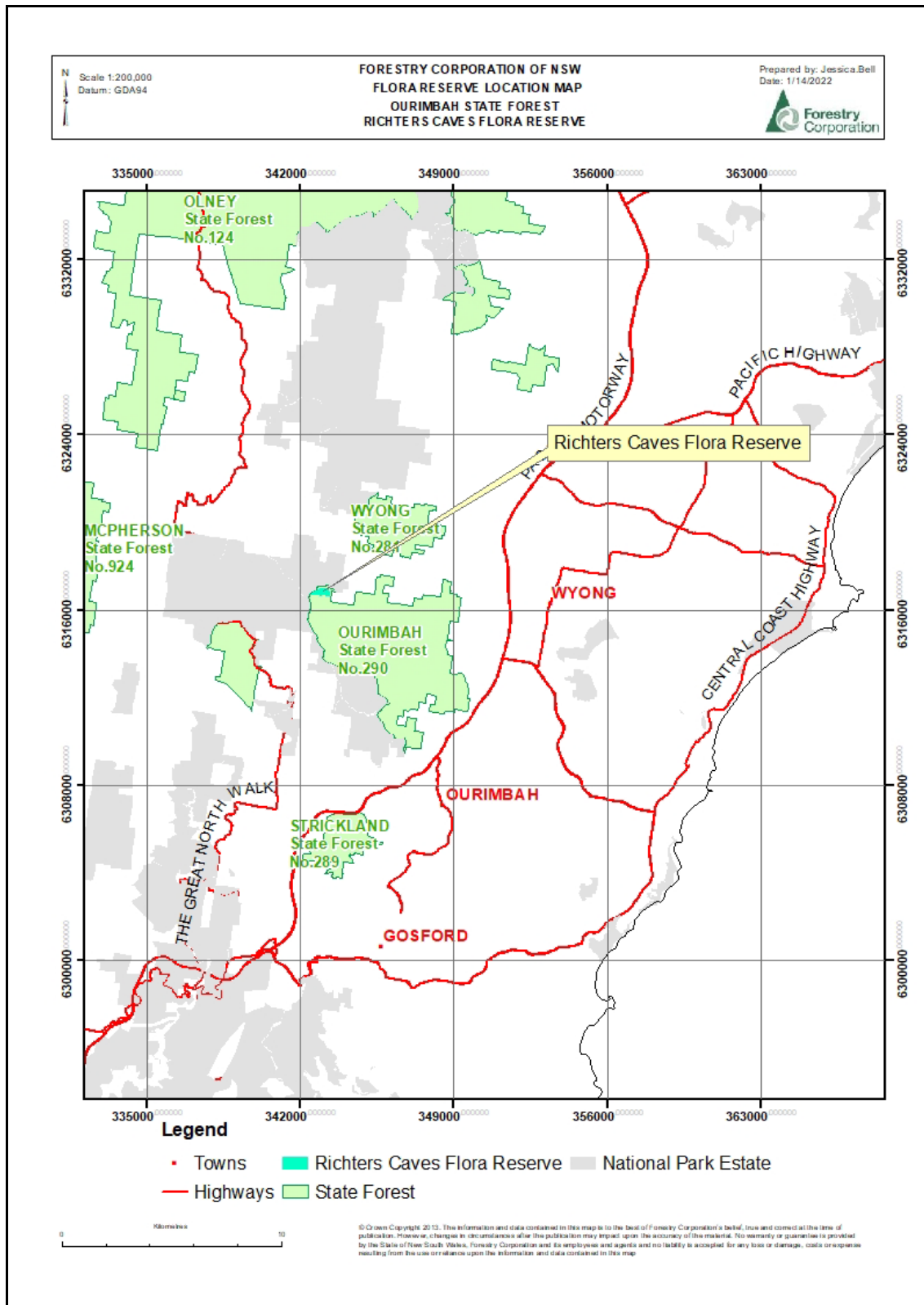
- » Appendix 1 – Locality Map
- » Appendix 2 – Forest Type Map
- » Appendix 3 – Flora Species List
- » Appendix 4 – Fauna Species List
- » Appendix 5 – Approval and amendments from previous version

Document title: Richters Caves Site Specific Working Plan	Version No.: 2	Page 8 of 22
Document ID: D21/18970	Owner: Senior Manager Forest Stewardship	Issue date: 6/9/23
		Review date: 6/9/33

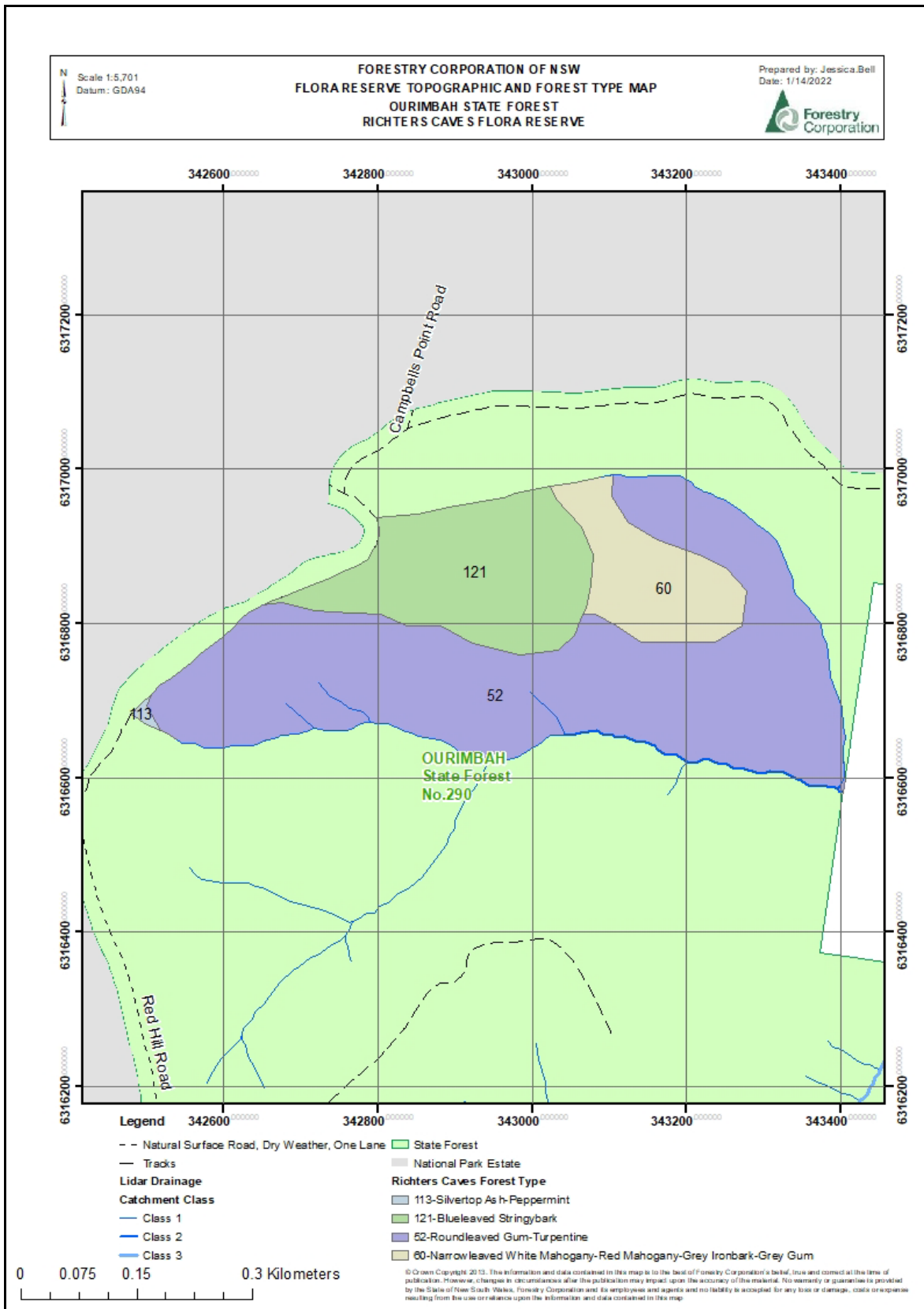
**WARNING: a printed copy of this document may be uncontrolled. Please verify this is the latest version prior to use.**



# APPENDIX 1 – LOCALITY MAP



# APPENDIX 2 – FOREST TYPE MAP



## APPENDIX 3 – FLORA SPECIES LIST

### Flora found within 5000m of Flora Reserve, desktop search undertaken January 2022

Scientific name
<i>Abrophyllum ornans</i>
<i>Abutilon grandifolium</i>
<i>Acacia baileyana</i>
<i>Acacia binervata</i>
<i>Acacia buxifolia</i> subsp. <i>buxifolia</i>
<i>Acacia fimbriata</i>
<i>Acacia implexa</i>
<i>Acacia irrorata</i>
<i>Acacia irrorata</i> subsp. <i>irrorata</i>
<i>Acacia kulnurensis</i>
<i>Acacia linifolia</i>
<i>Acacia longifolia</i>
<i>Acacia longifolia</i> subsp. <i>longifolia</i>
<i>Acacia longifolia</i> subsp. <i>sophorae</i>
<i>Acacia longissima</i>
<i>Acacia maidenii</i>
<i>Acacia myrtifolia</i>
<i>Acacia obtusifolia</i>
<i>Acacia oxycedrus</i>
<i>Acacia prominens</i>
<i>Acacia schinoides</i>
<i>Acacia</i> spp.
<i>Acacia suaveolens</i>
<i>Acacia terminalis</i>
<i>Acacia ulicifolia</i>
<i>Acetosa sagittata</i>
<i>Acetosella vulgaris</i>
<i>Acmena smithii</i>
<i>Acronychia oblongifolia</i>
<i>Acronychia wilcoxiana</i>
<i>Acrotriche aggregata</i>
<i>Acrotriche divaricata</i>
<i>Actinidia chinensis</i>
<i>Actinotus minor</i>
<i>Adiantum aethiopicum</i>
<i>Adiantum diaphanum</i>
<i>Adiantum formosum</i>
<i>Adiantum hispidulum</i>
<i>Adiantum hispidulum</i> var.

Scientific name
<i>hispidulum</i>
<i>Adiantum silvaticum</i>
<i>Ageratina adenophora</i>
<i>Ageratina riparia</i>
<i>Aira caryophyllea</i>
<i>Alectryon subcinereus</i>
<i>Allocasuarina torulosa</i>
<i>Alphitonia excelsa</i>
<i>Alternanthera denticulata</i>
<i>Alternanthera</i> spp.
<i>Amaranthus</i> spp.
<i>Ambrosia artemisiifolia</i>
<i>Amperea xiphioclada</i>
<i>Amyema pendula</i>
<i>Andropogon virginicus</i>
<i>Aneilema acuminatum</i>
<i>Angophora costata</i>
<i>Angophora floribunda</i>
<i>Anisopogon avenaceus</i>
<i>Anthoxanthum odoratum</i>
<i>Araujia sericifera</i>
<i>Archontophoenix cunninghamiana</i>
<i>Aristida ramosa</i>
<i>Aristida vagans</i>
<i>Arthropteris tenella</i>
<i>Asparagus aethiopicus</i>
<i>Asparagus asparagoides</i>
<i>Asparagus plumosus</i>
<i>Asplenium attenuatum</i>
<i>Asplenium australasicum</i>
<i>Asplenium flabellifolium</i>
<i>Aster subulatus</i>
<i>Asterolasia correifolia</i>
<i>Astrotricha floccosa</i>
<i>Astrotricha latifolia</i>
<i>Austrostipa rudis</i> subsp. <i>rudis</i>
<i>Austrostipa scabra</i> subsp. <i>falcata</i>
<i>Avena fatua</i>
<i>Axonopus fissifolius</i>

Scientific name
<i>Backhousia leptopetala</i>
<i>Backhousia myrtifolia</i>
<i>Baeckea diosmifolia</i>
<i>Baeckea imbricata</i>
<i>Baloghia inophylla</i>
<i>Banksia integrifolia</i>
<i>Banksia oblongifolia</i>
<i>Banksia serrata</i>
<i>Banksia spinulosa</i>
<i>Banksia spinulosa</i> var. <i>collina</i>
<i>Banksia spinulosa</i> var. <i>spinulosa</i>
<i>Bauera microphylla</i>
<i>Bidens pilosa</i>
<i>Bidens subalternans</i>
<i>Billardiera scandens</i>
<i>Blechnum ambiguum</i>
<i>Blechnum camfieldii</i>
<i>Blechnum cartilagineum</i>
<i>Blechnum neohollandicum</i>
<i>Blechnum nudum</i>
<i>Blechnum patersonii</i> subsp. <i>patersonii</i>
<i>Blechnum spinulosum</i>
<i>Boronia ledifolia</i>
<i>Boronia pinnata</i>
<i>Bossiaea heterophylla</i>
<i>Bossiaea obcordata</i>
<i>Bossiaea stephensonii</i>
<i>Brachyloma daphnoides</i> subsp. <i>daphnoides</i>
<i>Brachyscome</i> spp.
<i>Breynia oblongifolia</i>
<i>Briza maxima</i>
<i>Briza minor</i>
<i>Bromus catharticus</i>
<i>Bromus</i> spp.
<i>Burchardia umbellata</i>
<i>Bursaria longisepala</i>
<i>Bursaria spinosa</i>
<i>Bursaria spinosa</i> subsp. <i>spinosa</i>

Scientific name
<i>Caesia parviflora</i>
<i>Calanthe triplicata</i>
<i>Caldcluvia paniculosa</i>
<i>Callicoma serratifolia</i>
<i>Callistemon citrinus</i>
<i>Callistemon salignus</i>
<i>Callistemon shiressii</i>
<i>Callistemon sieberi</i>
<i>Callitriche stagnalis</i>
<i>Calochilus campestris</i>
<i>Calochilus paludosus</i>
<i>Calochlaena dubia</i>
<i>Calystegia marginata</i>
<i>Calytrix tetragona</i>
<i>Capsella bursa-pastoris</i>
<i>Cardamine paucijuga</i>
<i>Carex appressa</i>
<i>Carex declinata</i>
<i>Carex longebrachiata</i>
<i>Cassinia aureonitens</i>
<i>Cassinia sifton</i>
<i>Cassytha glabella</i>
<i>Cassytha glabella f. glabella</i>
<i>Cassytha pubescens</i>
<i>Cayratia clematidea</i>
<i>Cenchrus clandestinus</i>
<i>Centaurium erythraea</i>
<i>Centaurium tenuiflorum</i>
<i>Centella asiatica</i>
<i>Ceratopetalum apetalum</i>
<i>Ceratopetalum gummiferum</i>
<i>Cheilanthes sieberi</i>
<i>Cheilanthes sieberi subsp. sieberi</i>
<i>Chiloglottis spp.</i>
<i>Chloanthes stoechadis</i>
<i>Chloris gayana</i>
<i>Chrysanthemoides monilifera</i>
<i>Cinnamomum camphora</i>
<i>Cinnamomum oliveri</i>
<i>Cirsium vulgare</i>
<i>Cissus antarctica</i>
<i>Cissus hypoglauca</i>
<i>Cissus sterculiifolia</i>
<i>Citronella moorei</i>

Scientific name
<i>Citrus x taitensis</i>
<i>Claoxylon australe</i>
<i>Clematis aristata</i>
<i>Clematis glycinoides</i>
<i>Clematis glycinoides var. glycinoides</i>
<i>Clematis spp.</i>
<i>Clerodendrum tomentosum</i>
<i>Colocasia esculenta</i>
<i>Comesperma volubile</i>
<i>Commelina cyanea</i>
<i>Commersonia fraseri</i>
<i>Conospermum ericifolium</i>
<i>Conospermum longifolium subsp. longifolium</i>
<i>Conyza bonariensis</i>
<i>Conyza canadensis var. canadensis</i>
<i>Conyza sumatrensis</i>
<i>Coronidium scorpioides</i>
<i>Correa reflexa</i>
<i>Correa reflexa var. reflexa</i>
<i>Corybas aconitiflorus</i>
<i>Corymbia gummifera</i>
<i>Corymbia maculata</i>
<i>Cotula australis</i>
<i>Croton verreauxii</i>
<i>Cryptocarya glaucescens</i>
<i>Cryptocarya microneura</i>
<i>Cryptocarya obovata</i>
<i>Cryptostylis erecta</i>
<i>Cryptostylis spp.</i>
<i>Cryptostylis subulata</i>
<i>Cupaniopsis anacardioides</i>
<i>Cuscuta australis</i>
<i>Cyanicula caerulea</i>
<i>Cyathea leichhardtiana</i>
<i>Cyathochaeta diandra</i>
<i>Cyclophyllum longipetalum</i>
<i>Cyclosorus dentatus</i>
<i>Cyclosporum leptophyllum</i>
<i>Cymbidium suave</i>
<i>Cymbopogon refractus</i>
<i>Cynodon dactylon</i>
<i>Cyperus aggregatus</i>
<i>Cyperus brevifolius</i>

Scientific name
<i>Cyperus congestus</i>
<i>Cyperus difformis</i>
<i>Cyperus enervis</i>
<i>Cyperus eragrostis</i>
<i>Cyperus gracilis</i>
<i>Cyperus imbecillis</i>
<i>Cyperus polystachyos</i>
<i>Cyperus rotundus</i>
<i>Cyperus sesquiflorus</i>
<i>Cyperus spp.</i>
<i>Dampiera stricta</i>
<i>Daucus glochidiatus</i>
<i>Daviesia genistifolia</i>
<i>Daviesia ulicifolia</i>
<i>Daviesia ulicifolia subsp. ulicifolia</i>
<i>Decaspermum humile</i>
<i>Delairea odorata</i>
<i>Dendrobium aemulum</i>
<i>Dendrobium tetragonum</i>
<i>Dendrophthoe vitellina</i>
<i>Denhamia silvestris</i>
<i>Dennstaedtia davallioides</i>
<i>Desmodium gunnii</i>
<i>Desmodium rhytidophyllum</i>
<i>Desmodium varians</i>
<i>Dianella caerulea</i>
<i>Dianella caerulea var. assera</i>
<i>Dianella caerulea var. caerulea</i>
<i>Dianella caerulea var. producta</i>
<i>Dianella longifolia var. longifolia</i>
<i>Dianella revoluta var. revoluta</i>
<i>Dichelachne micrantha</i>
<i>Dichelachne parva</i>
<i>Dichondra repens</i>
<i>Digitaria ciliaris</i>
<i>Digitaria parviflora</i>
<i>Digitaria ramularis</i>
<i>Digitaria sanguinalis</i>
<i>Dioscorea transversa</i>
<i>Diospyros australis</i>
<i>Diploglottis australis</i>
<i>Diuris bracteata</i>
<i>Diuris sulphurea</i>

Scientific name
<i>Doodia linearis</i>
<i>Doryphora sassafras</i>
<i>Drosera auriculata</i>
<i>Dysoxylum fraserianum</i>
<i>Echinochloa crus-galli</i>
<i>Echinopogon caespitosus</i>
<i>Echinopogon caespitosus</i> var. <i>caespitosus</i>
<i>Echinopogon ovatus</i>
<i>Ehretia acuminata</i> var. <i>acuminata</i>
<i>Ehrharta erecta</i>
<i>Einadia hastata</i>
<i>Elaeocarpus reticulatus</i>
<i>Elaeodendron australe</i>
<i>Elaeodendron australe</i> var. <i>australe</i>
<i>Eleocharis equisetina</i>
<i>Eleocharis sphacelata</i>
<i>Eleusine indica</i>
<i>Embelia australiana</i>
<i>Endiandra discolor</i>
<i>Endiandra sieberi</i>
<i>Entolasia marginata</i>
<i>Entolasia stricta</i>
<i>Epacris obtusifolia</i>
<i>Epacris pulchella</i>
<i>Epilobium hirtigerum</i>
<i>Eragrostis brownii</i>
<i>Eragrostis curvula</i>
<i>Eragrostis leptostachya</i>
<i>Eragrostis pilosa</i>
<i>Eragrostis</i> spp.
<i>Eragrostis tenuifolia</i>
<i>Erythrina x sykesii</i>
<i>Eucalyptus acmenoides</i>
<i>Eucalyptus agglomerata</i>
<i>Eucalyptus amplifolia</i>
<i>Eucalyptus deanei</i>
<i>Eucalyptus fergusonii</i> subsp. <i>dorsiventralis</i>
<i>Eucalyptus fergusonii</i> subsp. <i>fergusonii</i>
<i>Eucalyptus haemastoma</i>
<i>Eucalyptus microcorys</i>
<i>Eucalyptus oblonga</i>

Scientific name
<i>Eucalyptus paniculata</i>
<i>Eucalyptus paniculata</i> subsp. <i>paniculata</i>
<i>Eucalyptus pilularis</i>
<i>Eucalyptus piperita</i>
<i>Eucalyptus propinqua</i>
<i>Eucalyptus resinifera</i>
<i>Eucalyptus robusta</i>
<i>Eucalyptus saligna</i>
<i>Eucalyptus scias</i>
<i>Eucalyptus scias</i> subsp. <i>scias</i>
<i>Eucalyptus siderophloia</i>
<i>Eucalyptus sieberi</i>
<i>Eucalyptus sparsifolia</i>
<i>Eucalyptus</i> spp.
<i>Eucalyptus umbra</i>
<i>Euchiton sphaericus</i>
<i>Eupomatia laurina</i>
<i>Eustrephus latifolius</i>
<i>Exocarpos cupressiformis</i>
<i>Exocarpos strictus</i>
<i>Ficus coronata</i>
<i>Fimbristylis dichotoma</i>
<i>Flagellaria indica</i>
<i>Fumaria muralis</i> subsp. <i>muralis</i>
<i>Gahnia aspera</i>
<i>Gahnia clarkei</i>
<i>Gahnia melanocarpa</i>
<i>Gahnia sieberiana</i>
<i>Gahnia</i> spp.
<i>Galinsoga parviflora</i>
<i>Galium aparine</i>
<i>Galium binifolium</i>
<i>Galium propinquum</i>
<i>Gamochaeta purpurea</i>
<i>Geitonoplesium cymosum</i>
<i>Geranium homeanum</i>
<i>Geranium molle</i> subsp. <i>molle</i>
<i>Geranium solanderi</i>
<i>Geranium solanderi</i> var. <i>solanderi</i>
<i>Gleichenia dicarpa</i>
<i>Glochidion ferdinandi</i>
<i>Glochidion ferdinandi</i> var. <i>ferdinandi</i>
<i>Glossodia major</i>

Scientific name
<i>Glycine clandestina</i>
<i>Glycine microphylla</i>
<i>Glycine tabacina</i>
<i>Gmelina leichhardtii</i>
<i>Gomphocarpus fruticosus</i>
<i>Gompholobium latifolium</i>
<i>Gonocarpus tetragynus</i>
<i>Gonocarpus teucroides</i>
<i>Goodenia dimorpha</i>
<i>Goodenia heterophylla</i> subsp. <i>eglandulosa</i>
<i>Goodenia heterophylla</i> subsp. <i>heterophylla</i>
<i>Goodenia ovata</i>
<i>Grammitis billardierei</i>
<i>Grevillea sericea</i>
<i>Guioa semiglauca</i>
<i>Gymnostachys anceps</i>
<i>Gynochthodes jasminoides</i>
<i>Haemodorum corymbosum</i>
<i>Hakea dactyloides</i>
<i>Hakea laevipes</i> subsp. <i>laevipes</i>
<i>Hakea salicifolia</i>
<i>Hakea salicifolia</i> subsp. <i>salicifolia</i>
<i>Hakea teretifolia</i>
<i>Hardenbergia violacea</i>
<i>Hedera helix</i>
<i>Hedysarum coronarium</i>
<i>Helicia glabriflora</i>
<i>Hibbertia aspera</i>
<i>Hibbertia dentata</i>
<i>Hibbertia diffusa</i>
<i>Hibbertia empetrifolia</i> subsp. <i>empetrifolia</i>
<i>Hibbertia linearis</i>
<i>Hibbertia monogyna</i>
<i>Hibbertia procumbens</i>
<i>Hibbertia riparia</i>
<i>Hibbertia scandens</i>
<i>Homalanthus populifolius</i>
<i>Hovea linearis</i>
<i>Howittia trilocularis</i>
<i>Hybanthus monopetalus</i>
<i>Hydrocotyle bonariensis</i>
<i>Hydrocotyle laxiflora</i>

Scientific name
<i>Hydrocotyle sibthorpioides</i>
<i>Hydrocotyle tripartita</i>
<i>Hymenophyllum cupressiforme</i>
<i>Hymenophyllum flabellatum</i>
<i>Hymenoporum flavum</i>
<i>Hypericum gramineum</i>
<i>Hypericum perforatum</i>
<i>Hypochaeris radicata</i>
<i>Hypolepis muelleri</i>
<i>Imperata cylindrica</i>
<i>Indigofera australis</i>
<i>Ipomoea indica</i>
<i>Isopogon anemonifolius</i>
<i>Jacksonia scoparia</i>
<i>Juncus cognatus</i>
<i>Juncus continuus</i>
<i>Juncus planifolius</i>
<i>Juncus prismatocarpus</i>
<i>Juncus usitatus</i>
<i>Kennedia rubicunda</i>
<i>Kunzea ambigua</i>
<i>Lagenifera stipitata</i>
<i>Lambertia formosa</i>
<i>Lantana camara</i>
<i>Lasiopetalum ferrugineum</i> var. <i>cordatum</i>
<i>Lasiopetalum ferrugineum</i> var. <i>ferrugineum</i>
<i>Lasiopetalum macrophyllum</i>
<i>Lastreopsis decomposita</i>
<i>Lastreopsis microsora</i> subsp. <i>microsora</i>
<i>Legnephora moorei</i>
<i>Lepidosperma gunnii</i>
<i>Lepidosperma laterale</i>
<i>Lepidosperma limicola</i>
<i>Leptocarpus tenax</i>
<i>Leptomeria acida</i>
<i>Leptospermum juniperinum</i>
<i>Leptospermum polygalifolium</i>
<i>Leptospermum polygalifolium</i> subsp. <i>cismontanum</i>
<i>Leptospermum trinervium</i>
<i>Lepyrodia scariosa</i>
<i>Leucochrysum</i> spp.
<i>Leucopogon juniperinus</i>

Scientific name
<i>Leucopogon lanceolatus</i> var. <i>lanceolatus</i>
<i>Leucopogon muticus</i>
<i>Ligustrum lucidum</i>
<i>Ligustrum sinense</i>
<i>Lindsaea linearis</i>
<i>Lindsaea microphylla</i>
<i>Liquidambar styraciflua</i>
<i>Litsea reticulata</i>
<i>Livistona australis</i>
<i>Lobelia purpurascens</i>
<i>Lolium</i> spp.
<i>Lomandra brevis</i>
<i>Lomandra confertifolia</i> subsp. <i>pallida</i>
<i>Lomandra confertifolia</i> subsp. <i>rubiginosa</i>
<i>Lomandra cylindrica</i>
<i>Lomandra filiformis</i>
<i>Lomandra filiformis</i> subsp. <i>coriacea</i>
<i>Lomandra filiformis</i> subsp. <i>filiformis</i>
<i>Lomandra glauca</i>
<i>Lomandra gracilis</i>
<i>Lomandra longifolia</i>
<i>Lomandra obliqua</i>
<i>Lomatia myricoides</i>
<i>Lomatia silaifolia</i>
<i>Lonicera japonica</i>
<i>Lycopodium deuterodensum</i>
<i>Lysimachia arvensis</i>
<i>Maclura cochinchinensis</i>
<i>Malus domestica</i>
<i>Marsdenia rostrata</i>
<i>Marsdenia suaveolens</i>
<i>Megathyrsus maximus</i>
<i>Melaleuca biconvexa</i>
<i>Melaleuca decora</i>
<i>Melaleuca ericifolia</i>
<i>Melaleuca hypericifolia</i>
<i>Melaleuca linariifolia</i>
<i>Melaleuca nodosa</i>
<i>Melaleuca quinquenervia</i>
<i>Melaleuca sieberi</i>
<i>Melaleuca styphelioides</i>

Scientific name
<i>Melicope micrococca</i>
<i>Melinis repens</i>
<i>Melodinus australis</i>
<i>Micrantheum ericoides</i>
<i>Microlaena stipoides</i>
<i>Microlaena stipoides</i> var. <i>stipoides</i>
<i>Microsorium scandens</i>
<i>Microtis unifolia</i>
<i>Mitrasacme polymorpha</i>
<i>Modiola caroliniana</i>
<i>Monotoca scoparia</i>
<i>Muehlenbeckia gracillima</i>
<i>Myrsine howittiana</i>
<i>Myrsine variabilis</i>
<i>Neolitsea dealbata</i>
<i>Nephrolepis cordifolia</i>
<i>Notelaea longifolia</i>
<i>Notelaea longifolia</i> f. <i>longifolia</i>
<i>Nymphoides geminata</i>
<i>Ochna serrulata</i>
<i>Oenothera stricta</i> subsp. <i>stricta</i>
<i>Olearia nernstii</i>
<i>Olearia tomentosa</i>
<i>Onopordum acanthium</i> subsp. <i>acanthium</i>
<i>Opercularia diphylla</i>
<i>Oplismenus aemulus</i>
<i>Oplismenus imbecillis</i>
<i>Ottochloa gracillima</i>
<i>Oxalis chnoodes</i>
<i>Oxalis corniculata</i>
<i>Oxalis perennans</i>
<i>Oxalis</i> spp.
<i>Oxytes brachypoda</i>
<i>Ozothamnus diosmifolius</i>
<i>Palmeria scandens</i>
<i>Pandorea pandorana</i>
<i>Pandorea pandorana</i> subsp. <i>pandorana</i>
<i>Panicum effusum</i>
<i>Panicum simile</i>
<i>Paronychia brasiliiana</i>
<i>Parsonsia straminea</i>
<i>Parsonsia velutina</i>
<i>Paspalidium criniforme</i>

Scientific name
<i>Paspalidium spp.</i>
<i>Paspalum dilatatum</i>
<i>Paspalum distichum</i>
<i>Paspalum mandiocanum</i>
<i>Paspalum urvillei</i>
<i>Passiflora edulis</i>
<i>Passiflora herbertiana</i>
<i>Passiflora spp.</i>
<i>Patersonia glabrata</i>
<i>Patersonia sericea</i>
<i>Pellaea falcata</i>
<i>Pellaea paradoxa</i>
<i>Peperomia tetraphylla</i>
<i>Persicaria decipiens</i>
<i>Persicaria hydropiper</i>
<i>Persicaria lapathifolia</i>
<i>Persicaria praetermissa</i>
<i>Persicaria strigosa</i>
<i>Persoonia isophylla</i>
<i>Persoonia levis</i>
<i>Persoonia linearis</i>
<i>Petrophile pulchella</i>
<i>Phebalium squamulosum</i> subsp. <i>squamulosum</i>
<i>Philydrum lanuginosum</i>
<i>Phyllanthus gunnii</i>
<i>Phyllanthus hirtellus</i>
<i>Phyllanthus spp.</i>
<i>Phyllota phyllicoides</i>
<i>Physalis peruviana</i>
<i>Phytolacca octandra</i>
<i>Pimelea latifolia</i> subsp. <i>hirsuta</i>
<i>Pimelea linifolia</i> subsp. <i>linifolia</i>
<i>Pittosporum multiflorum</i>
<i>Pittosporum revolutum</i>
<i>Pittosporum undulatum</i>
<i>Planchonella australis</i>
<i>Plantago debilis</i>
<i>Plantago lanceolata</i>
<i>Plantago spp.</i>
<i>Platycerium bifurcatum</i>
<i>Platysace lanceolata</i>
<i>Platysace linearifolia</i>
<i>Plectorrhiza tridentata</i>
<i>Plectranthus parviflorus</i>

Scientific name
<i>Poa annua</i>
<i>Poa labillardierei</i> var. <i>labillardierei</i>
<i>Podolobium aciculiferum</i>
<i>Podolobium ilicifolium</i>
<i>Pollia crispata</i>
<i>Polycarpon tetraphyllum</i>
<i>Polygala spp.</i>
<i>Polyosma cunninghamii</i>
<i>Polyscias murrayi</i>
<i>Polyscias sambucifolia</i>
<i>Polyscias sambucifolia</i> subsp. <i>sambucifolia</i>
<i>Polystichum australiense</i>
<i>Pomaderris ferruginea</i>
<i>Pomaderris lanigera</i>
<i>Pomax umbellata</i>
<i>Potamogeton ochreatus</i>
<i>Potamogeton octandrus</i>
<i>Prasophyllum elatum</i>
<i>Prostanthera linearis</i>
<i>Prostanthera rotundifolia</i>
<i>Prunella vulgaris</i>
<i>Pseuderanthemum variabile</i>
<i>Psychotria loniceroides</i>
<i>Pteridium esculentum</i>
<i>Pterostylis curta</i>
<i>Ptilothrix deusta</i>
<i>Pultenaea ferruginea</i>
<i>Pultenaea mollis</i>
<i>Pultenaea tuberculata</i>
<i>Pyrrosia rupestris</i>
<i>Ranunculus inundatus</i>
<i>Ranunculus lappaceus</i>
<i>Ranunculus plebeius</i>
<i>Ranunculus repens</i>
<i>Rhodamnia rubescens</i>
<i>Rhodomyrtus psidioides</i>
<i>Rhytidosporum procumbens</i>
<i>Richardia brasiliensis</i>
<i>Ricinocarpos pinifolius</i>
<i>Ripogonum album</i>
<i>Ripogonum fawcettianum</i>
<i>Rosa canina</i>
<i>Rosa rubiginosa</i>

Scientific name
<i>Rubus anglocandicans</i>
<i>Rubus fruticosus</i> sp. agg.
<i>Rubus laudatus</i>
<i>Rubus moluccanus</i>
<i>Rubus moluccanus</i> var. <i>trilobus</i>
<i>Rubus nebulosus</i>
<i>Rubus parvifolius</i>
<i>Rubus rosifolius</i>
<i>Rubus rosifolius</i> var. <i>rosifolius</i>
<i>Rubus ulmifolius</i>
<i>Rumex brownii</i>
<i>Rumex crispus</i>
<i>Rytidosperma spp.</i>
<i>Sambucus australasica</i>
<i>Sarcophilus parviflorus</i>
<i>Sarcopetalum harveyanum</i>
<i>Scaevola ramosissima</i>
<i>Schelhammera undulata</i>
<i>Schenkia spicata</i>
<i>Schizaea bifida</i>
<i>Schizomeria ovata</i>
<i>Schoenoplectus validus</i>
<i>Schoenus brevifolius</i>
<i>Schoenus melanostachys</i>
<i>Senecio bathurstianus</i>
<i>Senecio linearifolius</i>
<i>Senecio madagascariensis</i>
<i>Senecio minimus</i>
<i>Senecio pterophorus</i>
<i>Senecio velleioides</i>
<i>Senna pendula</i> var. <i>glabrata</i>
<i>Senna septemtrionalis</i>
<i>Seringia arborescens</i>
<i>Setaria palmifolia</i>
<i>Setaria parviflora</i>
<i>Setaria pumila</i>
<i>Setaria sphacelata</i>
<i>Sida rhombifolia</i>
<i>Sigesbeckia orientalis</i> subsp. <i>orientalis</i>
<i>Sloanea australis</i>
<i>Smilax australis</i>
<i>Smilax glycyphylla</i>
<i>Solanum americanum</i>
<i>Solanum aviculare</i>

Scientific name
<i>Solanum brownii</i>
<i>Solanum mauritianum</i>
<i>Solanum nigrum</i>
<i>Solanum prinophyllum</i>
<i>Solanum pseudocapsicum</i>
<i>Solanum pungetium</i>
<i>Solanum spp.</i>
<i>Solanum stelligerum</i>
<i>Sonchus asper</i>
<i>Sonchus oleraceus</i>
<i>Sporobolus africanus</i>
<i>Sporobolus creber</i>
<i>Sprengelia incarnata</i>
<i>Stachys arvensis</i>
<i>Stackhousia monogyna</i>
<i>Stellaria flaccida</i>
<i>Stellaria media</i>
<i>Stenocarpus salignus</i>
<i>Stenocarpus sinuatus</i>
<i>Stenotaphrum secundatum</i>
<i>Stephania japonica</i>
<i>Stephania japonica var. discolor</i>
<i>Sticherus flabellatus var. flabellatus</i>
<i>Stylidium graminifolium</i>
<i>Stylidium productum</i>
<i>Symplocos stawellii</i>
<i>Symplocos thwaitesii</i>

Scientific name
<i>Syncarpia glomulifera</i>
<i>Syncarpia glomulifera subsp. glomulifera</i>
<i>Synoum glandulosum subsp. glandulosum</i>
<i>Syzygium australe</i>
<i>Syzygium oleosum</i>
<i>Syzygium paniculatum</i>
<i>Tagetes minuta</i>
<i>Taraxacum officinale</i>
<i>Tasmania insipida</i>
<i>Tetraria capillaris</i>
<i>Tetrarrhena juncea</i>
<i>Tetrastigma nitens</i>
<i>Tetradlea shiressii</i>
<i>Thelymitra ixioides var. ixioides</i>
<i>Themeda triandra</i>
<i>Thunbergia alata</i>
<i>Todea barbara</i>
<i>Toona ciliata</i>
<i>Tradescantia fluminensis</i>
<i>Trema tomentosa var. aspera</i>
<i>Trifolium hybridum</i>
<i>Trifolium repens</i>
<i>Triglochin procera</i>
<i>Tristaniopsis collina</i>
<i>Tristaniopsis laurina</i>
<i>Trochocarpa laurina</i>

Scientific name
<i>Trophis scandens</i>
<i>Trophis scandens subsp. scandens</i>
<i>Tylophora barbata</i>
<i>Tylophora paniculata</i>
<i>Typha orientalis</i>
<i>Typhonium eliosurum</i>
<i>Urtica incisa</i>
<i>Verbena bonariensis</i>
<i>Verbena quadrangularis</i>
<i>Verbena rigida var. rigida</i>
<i>Verbena x brasiliensis</i>
<i>Vernonia cinerea var. cinerea</i>
<i>Veronica plebeia</i>
<i>Vicia sativa</i>
<i>Viola hederacea</i>
<i>Vittadinia cuneata var. cuneata</i>
<i>Wahlenbergia gracilis</i>
<i>Westringia fruticosa</i>
<i>Wilkiea huegeliana</i>
<i>Xanthium occidentale</i>
<i>Xanthorrhoea media</i>
<i>Xanthosia pilosa</i>
<i>Xanthosia tridentata</i>
<i>Xyris gracilis</i>
<i>Zieria pilosa</i>
<i>Zieria smithii</i>



## APPENDIX 4 – FAUNA SPECIES LIST

### Fauna found within 5000m of Flora Reserve, desktop search undertaken January 2022

Amphibians and reptiles	
Scientific name	Common name
<i>Pseudophryne bibronii</i>	Bibron's Toadlet
<i>Litoria dentata</i>	Bleating Tree Frog
<i>Litoria latopalmata</i>	Broad-palmed Frog
<i>Limnodynastes peronii</i>	Brown-striped Frog
<i>Crinia signifera</i>	Common Eastern Froglet
<i>Uperoleia fusca</i>	Dusky Toadlet
<i>Limnodynastes dumerilii</i>	Eastern Banjo Frog
<i>Litoria fallax</i>	Eastern Dwarf Tree Frog
<i>Litoria freycineti</i>	Freycinet's Frog
<i>Mixophyes iteratus</i>	Giant Barred Frog
<i>Heleioporus australiacus</i>	Giant Burrowing Frog
<i>Mixophyes fasciolatus</i>	Great Barred Frog
<i>Litoria caerulea</i>	Green Tree Frog
<i>Litoria brevipalmata</i>	Green-thighed Frog
<i>Litoria jervisiensis</i>	Jervis Bay Tree Frog
<i>Litoria phyllochroa</i>	Leaf-green Tree Frog
<i>Litoria lesueuri</i>	Lesueur's Frog
<i>Litoria littlejohni</i>	Littlejohn's Tree Frog

Amphibians and reptiles	
Scientific name	Common name
<i>Litoria peronii</i>	Peron's Tree Frog
<i>Pseudophryne coriacea</i>	Red-backed Toadlet
<i>Pseudophryne australis</i>	Red-crowned Toadlet
<i>Litoria chloris</i>	Red-eyed Tree Frog
<i>Litoria revelata</i>	Revealed Frog
<i>Uperoleia laevigata</i>	Smooth Toadlet
<i>Mixophyes balbus</i>	Stuttering Frog
<i>Adelotus brevis</i>	Tusked Frog
<i>Litoria tyleri</i>	Tyler's Tree Frog
<i>Litoria verreauxii</i>	Verreaux's Frog
<i>Litoria verreauxii</i>	Verreaux's Tree Frog (subsp)
<i>Uperoleia sp.</i>	
<i>Hemiaspis signata</i>	Black-bellied Swamp Snake
<i>Phyllurus platurus</i>	Broad-tailed Gecko
<i>Morelia spilota</i>	Carpet & Diamond Pythons
<i>Acanthophis antarcticus</i>	Common Death Adder
<i>Dendrelaphis punctulatus</i>	Common Tree Snake
<i>Lampropholis delicata</i>	Dark-flecked Garden Sunskink

Amphibians and reptiles	
Scientific name	Common name
<i>Morelia spilota spilota</i>	Diamond Python
<i>Tiliqua scincoides</i>	Eastern Blue-tongue
<i>Pseudonaja textilis</i>	Eastern Brown Snake
<i>Cryptophis nigrescens</i>	Eastern Small-eyed Snake
<i>Chelodina longicollis</i>	Eastern Snake-necked Turtle
<i>Intelligama lesueurii</i>	Eastern Water Dragon
<i>Cacophis squamulosus</i>	Golden-crowned Snake
<i>Varanus varius</i>	Lace Monitor
<i>Bellatorias major</i>	Land Mullet
<i>Amalasia lesueurii</i>	Lesueur's Velvet Gecko
<i>Cyclodomorphus michaeli</i>	Mainland She-oak Skink
<i>Pseudechis porphyriacus</i>	Red-bellied Black Snake
<i>Lophosaurus spinipes</i>	Southern Angle-headed Dragon
<i>Cacophis krefftii</i>	Southern Dwarf Crowned Snake
<i>Saiphos equalis</i>	Three-toed Skink
<i>Saproscincus mustelinus</i>	Weasel Skink

Birds	
Scientific name	Common name
<i>Sphecotheres</i>	Australasian

Birds	
Scientific name	Common name
<i>vieilloti</i>	Figbird

Birds	
Scientific name	Common name
<i>Tachybaptus</i>	Australasian

Birds	
Scientific name	Common name
<i>novaehollandiae</i>	Grebe
<i>Alectura lathamii</i>	Australian Brush-turkey
<i>Falco longipennis</i>	Australian Hobby
<i>Alisterus scapularis</i>	Australian King-Parrot
<i>Gymnorhina tibicen</i>	Australian Magpie
<i>Aegotheles cristatus</i>	Australian Owllet-nightjar
<i>Pelecanus conspicillatus</i>	Australian Pelican
<i>Corvus coronoides</i>	Australian Raven
<i>Threskiornis moluccus</i>	Australian White Ibis
<i>Chenonetta jubata</i>	Australian Wood Duck
<i>Ceyx azureus</i>	Azure Kingfisher
<i>Geopelia humeralis</i>	Bar-shouldered Dove
<i>Manorina melanophrys</i>	Bell Miner
<i>Cygnus atratus</i>	Black Swan
<i>Coracina novaehollandiae</i>	Black-faced Cuckoo-shrike
<i>Monarcha melanopsis</i>	Black-faced Monarch
<i>Macropygia phasianella</i>	Brown Cuckoo-Dove
<i>Falco berigora</i>	Brown Falcon
<i>Gerygone mouki</i>	Brown Gerygone
<i>Accipiter fasciatus</i>	Brown Goshawk
<i>Synoicus ypsilophora</i>	Brown Quail
<i>Acanthiza pusilla</i>	Brown Thornbill
<i>Cacomantis variolosus</i>	Brush Cuckoo
<i>Bubulcus ibis</i>	Cattle Egret
<i>Scythrops novaehollandiae</i>	Channel-billed Cuckoo
<i>Anas castanea</i>	Chestnut Teal

Birds	
Scientific name	Common name
<i>Edolisoma tenuirostris</i>	Cicadabird
<i>Accipiter cirrocephalus</i>	Collared Sparrowhawk
<i>Acridotheres tristis</i>	Common Myna
<i>Sturnus vulgaris</i>	Common Starling
<i>Ocyphaps lophotes</i>	Crested Pigeon
<i>Platycercus elegans</i>	Crimson Rosella
<i>Eurystomus orientalis</i>	Dollarbird
<i>Gallinula tenebrosa</i>	Dusky Moorhen
<i>Tyto javanica</i>	Eastern Barn Owl
<i>Casmerodius modesta</i>	Eastern Great Egret
<i>Eudynamis orientalis</i>	Eastern Koel
<i>Platycercus eximius</i>	Eastern Rosella
<i>Falcunculus frontatus frontatus</i>	Eastern Shrike-tit
<i>Acanthorhynchus tenuirostris</i>	Eastern Spinebill
<i>Psophodes olivaceus</i>	Eastern Whipbird
<i>Eopsaltria australis</i>	Eastern Yellow Robin
<i>Dromaius novaehollandiae</i>	Emu
<i>Petrochelidon ariel</i>	Fairy Martin
<i>Cacomantis flabelliformis</i>	Fan-tailed Cuckoo
<i>Eolophus roseicapilla</i>	Galah
<i>Callocephalon fimbriatum</i>	Gang-gang Cockatoo
<i>Calyptorhynchus lathamii</i>	Glossy Black-Cockatoo
<i>Pachycephala pectoralis</i>	Golden Whistler
<i>Ailuroedus crassirostris</i>	Green Catbird
<i>Cracticus torquatus</i>	Grey Butcherbird
<i>Rhipidura</i>	Grey Fantail

Birds	
Scientific name	Common name
<i>albiscapa</i>	
<i>Colluricincla harmonica</i>	Grey Shrike-thrush
<i>Poliocephalus poliocephalus</i>	Hoary-headed Grebe
<i>Pavo cristatus</i>	Indian Peafowl
<i>Microeca fascinans</i>	Jacky Winter
<i>Sericornis magnirostra</i>	Large-billed Scrubwren
<i>Dacelo novaeguineae</i>	Laughing Kookaburra
<i>Meliphaga lewinii</i>	Lewin's Honeyeater
<i>Phalacrocorax sulcirostris</i>	Little Black Cormorant
<i>Cacatua sanguinea</i>	Little Corella
<i>Egretta garzetta</i>	Little Egret
<i>Glossopsitta pusilla</i>	Little Lorikeet
<i>Microcarbo melanoleucos</i>	Little Pied Cormorant
<i>Anthochaera chrysoptera</i>	Little Wattlebird
<i>Cacatua tenuirostris</i>	Long-billed Corella
<i>Grallina cyanoleuca</i>	Magpie-lark
<i>Anas platyrhynchos</i>	Mallard
<i>Vanellus miles</i>	Masked Lapwing
<i>Tyto novaehollandiae</i>	Masked Owl
<i>Dicaeum hirundinaceum</i>	Mistletoebird
<i>Glossopsitta concinna</i>	Musk Lorikeet
<i>Philemon corniculatus</i>	Noisy Friarbird
<i>Manorina melanocephala</i>	Noisy Miner
<i>Oriolus sagittatus</i>	Olive-backed Oriole
<i>Aviceda subcristata</i>	Pacific Baza
<i>Anas superciliosa</i>	Pacific Black Duck

Birds	
Scientific name	Common name
<i>Heteroscenes pallidus</i>	Pallid Cuckoo
<i>Centropus phasianinus</i>	Pheasant Coucal
<i>Cracticus nigrogularis</i>	Pied Butcherbird
<i>Phalacrocorax varius</i>	Pied Cormorant
<i>Strepera graculina</i>	Pied Currawong
<i>Ninox strenua</i>	Powerful Owl
<i>Porphyrio porphyrio</i>	Purple Swamphen
<i>Trichoglossus haematodus</i>	Rainbow Lorikeet
<i>Gallus gallus</i>	Red Junglefowl
<i>Anthochaera carunculata</i>	Red Wattlebird
<i>Neochmia temporalis</i>	Red-browed Finch
<i>Pycnonotus jocosus</i>	Red-whiskered Bulbul
<i>Sericulus chrysocephalus</i>	Regent Bowerbird
<i>Columba livia</i>	Rock Dove
<i>Petroica rosea</i>	Rose Robin
<i>Platalea regia</i>	Royal Spoonbill
<i>Rhipidura rufifrons</i>	Rufous Fantail
<i>Pachycephala rufiventris</i>	Rufous Whistler
<i>Todiramphus sanctus</i>	Sacred Kingfisher
<i>Ptilonorhynchus violaceus</i>	Satin Bowerbird
<i>Trichoglossus chlorolepidotus</i>	Scaly-breasted Lorikeet
<i>Myzomela sanguinolenta</i>	Scarlet Honeyeater
<i>Petroica boodang</i>	Scarlet Robin
<i>Chalcites lucidus</i>	Shining Bronze-Cuckoo
<i>Chroicocephalus novaehollandiae</i>	Silver Gull

Birds	
Scientific name	Common name
<i>Zosterops lateralis</i>	Silvereeye
<i>Tyto tenebricosa</i>	Sooty Owl
<i>Ninox novaeseelandiae</i>	Southern Boobook
<i>Pardalotus punctatus</i>	Spotted Pardalote
<i>Cinclosoma punctatum</i>	Spotted Quail-thrush
<i>Spilopelia chinensis</i>	Spotted Turtle-Dove
<i>Threskiornis spinicollis</i>	Straw-necked Ibis
<i>Butorides striata</i>	Striated Heron
<i>Acanthiza lineata</i>	Striated Thornbill
<i>Cacatua galerita</i>	Sulphur-crested Cockatoo
<i>Malurus cyaneus</i>	Superb Fairy-wren
<i>Menura novaehollandiae</i>	Superb Lyrebird
<i>Podargus strigoides</i>	Tawny Frogmouth
<i>Lopholaimus antarcticus</i>	Topknot Pigeon
<i>Cracticus sp.</i>	Unidentified Butcherbird
<i>Zoothera sp.</i>	unidentified ground thrush
<i>Coturnix sp.</i>	Unidentified Quail
<i>Platycercus sp.</i>	Unidentified Rosella
<i>Anthochaera sp.</i>	Unidentified Wattlebird
<i>Daphoenositta chrysoptera</i>	Varied Sittella
<i>Malurus lamberti</i>	Variegated Fairy-wren
<i>Aquila audax</i>	Wedge-tailed Eagle
<i>Hirundo neoxena</i>	Welcome Swallow
<i>Haliastur sphenurus</i>	Whistling Kite
<i>Haliaeetus leucogaster</i>	White-bellied Sea-Eagle

Birds	
Scientific name	Common name
<i>Sericornis frontalis</i>	White-browed Scrubwren
<i>Phylidonyris niger</i>	White-cheeked Honeyeater
<i>Nesoptilotis leucotis</i>	White-eared Honeyeater
<i>Egretta novaehollandiae</i>	White-faced Heron
<i>Columba leucomela</i>	White-headed Pigeon
<i>Melithreptus lunatus</i>	White-naped Honeyeater
<i>Ardea pacifica</i>	White-necked Heron
<i>Gerygone olivacea</i>	White-throated Gerygone
<i>Hirundapus caudacutus</i>	White-throated Needletail
<i>Eurostopodus mystacalis</i>	White-throated Nightjar
<i>Cormobates leucophaea</i>	White-throated Treecreeper
<i>Corcorax melanorhamphos</i>	White-winged Chough
<i>Rhipidura leucophrys</i>	Willie Wagtail
<i>Leucosarcia melanoleuca</i>	Wonga Pigeon
<i>Acanthiza nana</i>	Yellow Thornbill
<i>Caligavis chrysops</i>	Yellow-faced Honeyeater
<i>Acanthiza chrysorrhoa</i>	Yellow-rumped Thornbill
<i>Zanda funereus</i>	Yellow-tailed Black-Cockatoo
<i>Neosericornis citreogularis</i>	Yellow-throated Scrubwren

Mammals	
Scientific name	Common name
<i>Vombatus ursinus</i>	Bare-nosed Wombat
<i>Rattus rattus</i>	Black Rat
<i>Antechinus stuartii</i>	Brown Antechinus
<i>Trichosurus sp.</i>	brush-tail possum
<i>Rattus fuscipes</i>	Bush Rat
<i>Felis catus</i>	Cat
<i>Chalinolobus morio</i>	Chocolate Wattled Bat
<i>Trichosurus vulpecula</i>	Common Brushtail Possum
<i>Pseudocheirus peregrinus</i>	Common Ringtail Possum
<i>Osphranter robustus</i>	Common Wallaroo
<i>Canis lupus</i>	Dingo, domestic dog
<i>Canis familiaris</i>	Dog
<i>Equus asinus</i>	Donkey
<i>Scotorepens orion</i>	Eastern Broad-nosed Bat
<i>Vespadelus trougtoni</i>	Eastern Cave Bat
<i>Micronomus norfolkensis</i>	Eastern Coastal Free-tailed Bat
<i>Falsistrellus tasmaniensis</i>	Eastern False Pipistrelle
<i>Vespadelus pumilus</i>	Eastern Forest Bat
<i>Ozimops ridei</i>	Eastern Free-tailed Bat
<i>Macropus giganteus</i>	Eastern Grey Kangaroo

Mammals	
Scientific name	Common name
<i>Rhinolophus megaphyllus</i>	Eastern Horseshoe-bat
<i>Bos taurus</i>	European cattle
<i>Acrobates pygmaeus</i>	Feathertail Glider
<i>Pteropus sp.</i>	Flying-fox
<i>Vulpes vulpes</i>	Fox
<i>Nyctophilus gouldi</i>	Gould's Long-eared Bat
<i>Chalinolobus gouldii</i>	Gould's Wattled Bat
<i>Scoteanax rueppellii</i>	Greater Broad-nosed Bat
<i>Petauroides volans</i>	Greater Glider
<i>Pteropus poliocephalus</i>	Grey-headed Flying-fox
<i>Equus caballus</i>	Horse
<i>Macropus sp.</i>	kangaroo / wallaby
<i>Phascolarctos cinereus</i>	Koala
<i>Miniopterus oriana oceanensis</i>	Large Bent-winged Bat
<i>Nyctophilus geoffroyi</i>	Lesser Long-eared Bat
<i>Miniopterus australis</i>	Little Bent-winged Bat
<i>Vespadelus vulturnus</i>	Little Forest Bat
<i>Nyctophilus sp.</i>	long-eared bat
<i>Perameles nasuta</i>	Long-nosed Bandicoot
<i>Antechinus mimetes</i>	Mainland Dusky Antechinus
<i>Macropus parma</i>	Parma Wallaby

Mammals	
Scientific name	Common name
<i>Ornithorhynchus anatinus</i>	Platypus
<i>Oryctolagus cuniculus</i>	Rabbit
<i>Thylogale thetis</i>	Red-necked Pademelon
<i>Notamacropus rufogriseus</i>	Red-necked Wallaby
<i>Tachyglossus aculeatus</i>	Short-beaked Echidna
<i>Vespadelus regulus</i>	Southern Forest Bat
<i>Myotis macropus</i>	Southern Myotis
<i>Dasyurus maculatus</i>	Spotted-tailed Quoll
<i>Petaurus breviceps</i>	Sugar Glider
<i>Wallabia bicolor</i>	Swamp Wallaby
<i>Antechinus sp.</i>	Unidentified Antechinus
<i>Isodon/Perameles sp.</i>	unidentified Bandicoot
<i>Cervus sp.</i>	Unidentified Deer
<i>Vespadelus sp.</i>	Unidentified Eptesicus
<i>Macropod sp.</i>	unidentified macropod
<i>Hydromys chrysogaster</i>	Water-rat
<i>Austronomus australis</i>	White-striped Freetail-bat
<i>Petaurus australis</i>	Yellow-bellied Glider
<i>Saccolaimus flaviventris</i>	Yellow-bellied Sheath-tail-bat

Fish and gastropods	
Scientific name	Common name

<i>Retropinna semoni</i>	Australian Smelt
<i>Anguilla reinhardtii</i>	longfin eel
<i>Gambusia holbrooki</i>	Mosquito Fish
<i>Anguilla sp.</i>	Shortfin Eel
<i>Gobiomorphus australis</i>	Striped Gudgeon
<i>Bradybaena similaris</i>	Asian trampsnail

## APPENDIX 5 – APPROVAL AND AMENDMENTS FROM PREVIOUS VERSION

In line with section 25 of the *Forestry Act 2012*, flora reserve working plans and any amendments must be approved by the Minister. This plan forms part of the working plans for each of the individual flora reserves listed in section 6.

This plan was approved by The Hon. Tara Moriarty MLC, Minister for Agriculture, Minister for Regional New South Wales and Minister for Western New South Wales

Date of approval: 6/9/23

Version	Changes	Approval details
2.0	<ul style="list-style-type: none"> <li>» Reference to the <i>Flora Reserve Plan: Background and General Management</i></li> <li>» Formatting updated</li> <li>» Change</li> </ul>	<ul style="list-style-type: none"> <li>» The Hon. Tara Moriarty MLC, Minister for Agriculture, Minister for Regional New South Wales and Minister for Western New South Wales, 6/9/23</li> </ul>