



PYROCARPA FLORA RESERVE NO. 73

SITE SPECIFIC WORKING PLAN

Table of Contents

1. Details of the Reserve	3
1.1 Location	3
1.2 Key Attributes of the reserve	3
1.3 General Description	3
1.4 History	4
1.5 Current Usage	4
2. System of Management	5
2.1 Objectives of Management	5
2.2 Management Strategies	5
2.3 Management Responsibility	7
2.4 Monitoring, Reporting and Review	7
3. List of Appendices	7
Appendix 1 – Locality Map	8
Appendix 2 – Topographic & Forest Type Map	9
Appendix 3 – Flora Species List	10
Appendix 4 – Fauna Species List	14
Appendix 5 – Approval and Amendments from previous version	17

This *Site-Specific Working Plan* describes the important values of an individual flora reserve and identifies site specific priorities for management. The plan is supported by the *Flora Reserve Plan: Background and General Management* document, which identifies Forestry Corporation's broad objectives and strategies for managing flora reserves.

1. DETAILS OF THE RESERVE

1.1 LOCATION

Pyrocarpa Flora Reserve is located in the northern half of Doubleduke State Forest, about 15 kilometres southwest of the town of Woodburn and 35 kilometres southeast of the town of Casino. See Locality Map in Appendix 1.

1.2 KEY ATTRIBUTES OF THE RESERVE

Under the *Forestry Act 2012*, flora reserves are set apart for the preservation of native flora.

The reserve possesses the following identified attributes that are to be protected:

- » stands of Largefruited Blackbutt (*Eucalyptus pyrocarpa*), a tree with limited distribution, occurring on the North Coast of NSW
- » representative examples of forest ecosystems in the area
- » Aboriginal cultural and archaeological values of the reserve.

1.3 GENERAL DESCRIPTION

Area

The reserve has an area of about 70 hectares. The reserve is bounded to the north and northwest by Cliff Forest Road and to the southwest, south, and southeast by a graded, un-named track.

Topography

The reserve is situated in broken ridgetop country draining into Palm Creek, which flows into the south arm of the Richmond River via Jackybulbin Creek.

Altitude ranges from 150 metres above sea level in the north down to 120 metres above sea level in the south. Refer to Appendix 2 for topographic map.

Geology and Soils

Parent rocks are Jurassic and Cretaceous sedimentary deposits. The major strata are the Kangaroo Creek Sandstones and the Grafton Formation, which is mainly sandstones, siltstones, and claystones.

The sedimentary rocks have given rise to a variety of highly leached podsolc soils low in plant nutrients and highly susceptible to erosion.

Climate

The climate is subtropical with a predominantly summer/autumn rainfall and a dry winter and spring.

Vegetation / flora and fauna

Largefruited Blackbutt (forest type 38) is the dominant forest type in the reserve. As its name indicates, this type is dominated by Largefruited Blackbutt (*Eucalyptus pyrocarpa*). On the reserve it occurs with stands of true Blackbutt (*E. pilularis*), with little hybridisation of the two species. Largefruited Blackbutt has a scattered distribution on the North Coast, extending from this area, which is near its northernmost occurrence, as far south as the Kendall district. It usually grows on rather shallow, heavily drained soils of rather low fertility, forming dry sclerophyll forest stands. Appendix 2 Map shows the forest types within the reserve.

Other trees found in the reserve include Bailey's Stringybark (*E. baileyana*), Red Bloodwood (*E. gummifera*), Red Mahogany (*E. resinifera*) and Turpentine (*Syncarpia glomulifera*). Common in the sclerophyllous understorey are Christmas Bush (*Ceratopetalum gummiferum*) and Prickly Alyxia (*Alyxia ruscifolia*). Appendices 3 and 4 outline a list of flora and fauna species known to occur within the reserve.

1.4 HISTORY

Aboriginal History and Cultural Values

Pyrocarpa Flora Reserve is situated within the traditional lands of the Bundjalung people and there is a number of Aboriginal cultural heritage sites located within or within the surrounding area. The area is part of a cultural landscape, used for everyday and ceremonial activities including seasonal food and resource gathering and also as a travel route from the mountains to the coast. Tangible aspects of these activities are evident as walking tracks and scar trees, the remains of camp sites with stone tools (isolated stone artefact and artefact scatters) as well as sacred features and places created at the beginning of time.

Post European Settlement

Harvesting and grazing

The reserve area was heavily logged in 1959 and on several occasions prior to that date. Regeneration has occurred and the stand is now multi-aged and in reasonable condition. Adjoining areas were logged from 1967 to 1975. Some thinning work was carried out on sections of these logged areas in the late 1970s, though not in the reserve.

Some grazing has occurred in the reserve in the past. Although, the area is not an attractive grazing proposition; thus, the effects of grazing are minimal.

Fire

Fire is a natural part of the Australian landscape and most forests have been impacted by fire multiple times over many centuries. Wildfire entered the reserve in the summer season of 1986/87, 2001, 2002, 2016 and in the summer season of 2019/20, with medium to high intensity recorded, resulting in the canopy being partially burnt in discrete areas.

Establishment of Flora Reserve

The reserve was informally set aside as a Forest Preserve by the Forestry Commission in 1966. The area was officially gazetted as Flora Reserve No. 97524 on 2nd August 1985. In a general renumbering of Flora Reserves in the Government Gazette of 24th July 1987, the reserve became Pyrocarpa Flora Reserve No. 73.

1.5 CURRENT USAGE

The reserve receives limited recreational usage, primarily by visitors driving through the reserve on Cliff Forest Road. No recreational facilities are provided at the reserve and there is no intention to develop any facilities.

Flora Reserve Plan: Pyrocarpa Site Specific Working Plan Template	Version No.: 2	Page 4 of 17
Document ID: D21/17960	Owner: Senior Manager Forest Stewardship	Issue date: 6/9/23
		Review date: 6/9/33

WARNING: a printed copy of this document may be uncontrolled. Please verify this is the latest version prior to use.

2. SYSTEM OF MANAGEMENT

2.1 OBJECTIVES OF MANAGEMENT

Under the *Forestry Act 2012*, flora reserves are set apart for the preservation of native flora. The objectives of Pyrocarpa Flora Reserve are to:

- » protect stands of Largefruited Blackbutt (*Eucalyptus pyrocarpa*)
- » protect representative examples of forest ecosystems in the area
- » protect indigenous / non-indigenous cultural and archaeological values of the reserve
- » maintain reference stands and provide for limited scientific study consistent with the protection of the area, including the development of an understanding of successional growth processes after disturbance and as a reference for assessing the effects of alternative land use in surrounding areas.

2.2 MANAGEMENT STRATEGIES

Under the *Forestry Act 2012*, flora reserves are set apart for the preservation of native flora. The broad management strategies and related actions to preserve native flora and improve the value and extent of habitat in this flora reserve include:

- » Property maintenance, through:
 - establishment and maintenance of appropriate fences, gates and signs
 - removal of unnecessary fencing
 - maintenance of roads and trails
 - restricting visitor use to walking trails for educational activities.
- » Conservation and improvement of habitat, through:
 - maintenance of native vegetation, which may include manipulation by mechanical means for habitat improvement
 - regeneration of any cleared or degraded land, through plantings and natural recruitment
 - weed control
 - removal of rubbish
 - management of human disturbance, including harvesting and other forest product operations
 - retention of dead timber and other habitat resources
 - management of fire, including prescribed or hazard reduction burning.
- » Pest animal control.

The full suite of management measures outlined are expected to provide benefits for all threatened species of flora and fauna in this reserve.

Cultural Values

Explore opportunities for Aboriginal community involvement in managing the flora reserve.

Weeds

The vegetation within the flora reserve is in very healthy state with no obvious weeds present. As far as reasonably practicable, exotic species will be controlled, as detailed in section 2.4.

Trail maintenance

Maintenance of roads and trails is important to enable access to the forest for forest management, firefighting, tourism. Poorly maintained roads can also transport significant levels of sediment, increasing the turbidity of water within creeks. This consequently reduces habitat quality and aquatic biodiversity and can take significant periods of time to recover.

Permitted activities

Under the Forest Management Zoning (FMZ) system, Pyrocarpa Flora Reserve N. 73 is zoned FMZ 1 and therefore contributes to the dedicated reserve system in the Upper North East Region. Management will be consistent with the requirements of JANIS dedicated reserves.

The latest operational guide detailing information not permitted in FMZ1 is published on the Forestry Corporation website.

The following activities may be permitted subject to standard conditions approved by the delegated Manager and consistent with the management objectives for the reserve, relevant codes of practice, forest practices / operational circulars, protocols, licenses and management / recovery plans:

- » scientific studies (e.g., fauna surveys including trapping)
- » maintenance of existing roads and fire trails
- » maintenance of existing recreation facilities and upgrading where necessary to keep pace with demand while protecting the attributes of the reserve
- » limited tree and or limb removal for safety, viewing or construction of facilities in areas used for recreation
- » pest animal and weed control
- » general access for activities such as bush walking, photography and nature study
- » beekeeping (existing set-down sites may be used)
- » Aboriginal use of forest products consistent with the maintenance of the conservation attributes to be protected in the reserve
- » fire management will be undertaken in a manner consistent with maintaining the health of forest ecosystems.

The following activities may only be permitted with special conditions:

- » Construction of new roads. Construction will only be permitted in exceptional instances and consistent with the following principles:
 - no practical alternative is available
 - the attributes of the reserve will not be significantly affected by the road or fire trail
 - opportunity is provided for public comment on the proposal, obtained through advertising in the local newspaper
 - Ministerial approval is given for the proposal.

Mining

The reserve was exempted from the provisions of the *Mining Act 1992* by notice in the Government Gazette of 25th July 1986, excluding the land lying below 20 metres from the surface.

Flora Reserve Plan: Pyrocarpa Site Specific Working Plan Template	Version No.: 2	Page 6 of 17
Document ID: D21/17960	Owner: Senior Manager Forest Stewardship	Issue date: 6/9/23
		Review date: 6/9/33

WARNING: a printed copy of this document may be uncontrolled. Please verify this is the latest version prior to use.

2.3 MANAGEMENT RESPONSIBILITY

The reserve will be administered by Forestry Corporation of NSW's Hardwood Forests Division, with the authority for decision making delegated to the Senior Manager Forest Stewardship or equivalent level manager.

2.4 MONITORING, REPORTING AND REVIEW

The Region will monitor changes to the key attributes of the reserve and will review the effectiveness of the management strategies designed to protect those attributes and to achieve the management objectives.

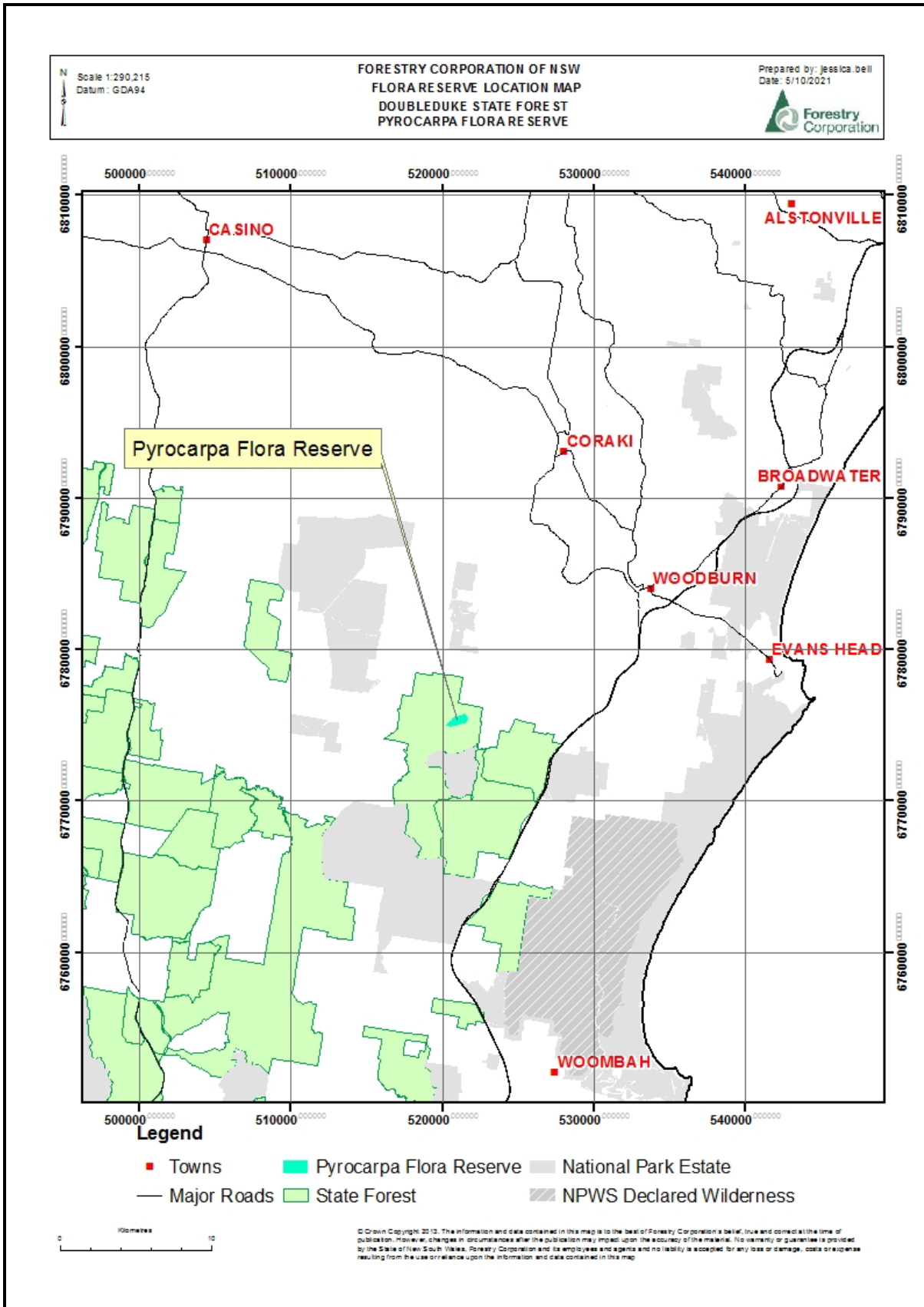
The results of this monitoring, review and management response will be included in annual reporting processes.

The provisions of this Working Plan will be amended, if necessary, in light of the results of the monitoring program and / or legislative change and with the approval of the Minister administering the *Forestry Act 2012*.

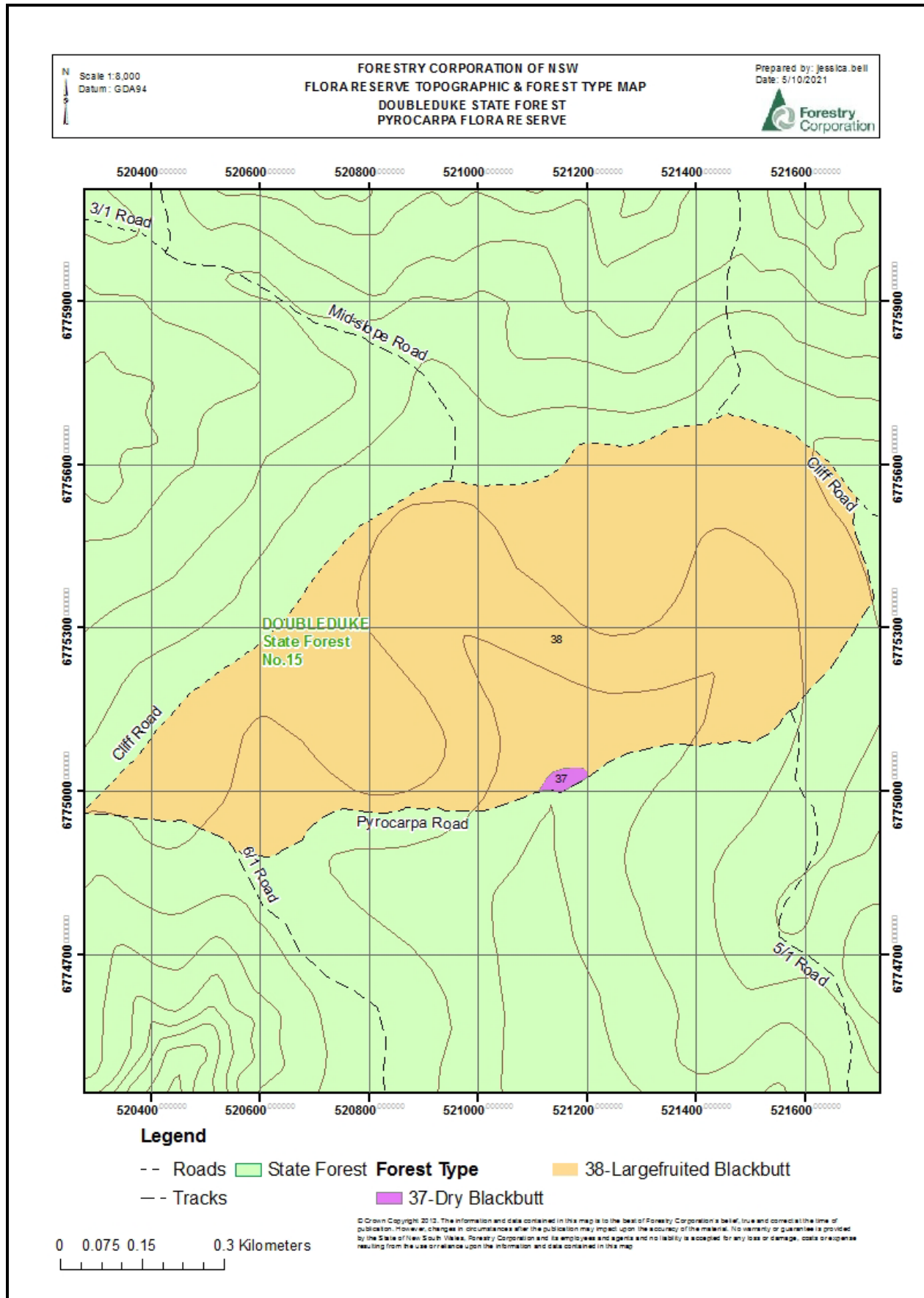
3. LIST OF APPENDICES

- » Appendix 1 – Locality Map
- » Appendix 2 – Topographic and Forest Type Map
- » Appendix 3 – Flora Species List
- » Appendix 4 – Fauna Species List
- » Appendix 5 – Approval and amendments from previous version

APPENDIX 1 – LOCALITY MAP



APPENDIX 2 – TOPOGRAPHIC & FOREST TYPE MAP



APPENDIX 3 – FLORA SPECIES LIST

Flora found within 5000m of Flora Reserve, desktop search undertaken October 2021

Scientific name	Scientific name	Scientific name
<i>Abildgaardia ovata</i>	<i>Angophora paludosa</i>	<i>Blechnum cartilagineum</i>
<i>Abildgaardia vaginata</i>	<i>Angophora subvelutina</i>	<i>Brachyloma scortechinii</i>
<i>Acacia aulacocarpa</i>	<i>Angophora woodsiana</i>	<i>Breynia oblongifolia</i>
<i>Acacia binervata</i>	<i>Archontophoenix cunninghamiana</i>	<i>Brunoniella australis</i>
<i>Acacia blakei</i> subsp. <i>diphylla</i>	<i>Archontophoenix</i> spp.	<i>Brunoniella pumilio</i>
<i>Acacia brownii</i>	<i>Aristida benthamii</i>	<i>Bursaria spinosa</i>
<i>Acacia complanata</i>	<i>Aristida calycina</i>	<i>Caesia parviflora</i>
<i>Acacia concurrens</i>	<i>Aristida calycina</i> var. <i>calycina</i>	<i>Callistemon pachyphyllus</i>
<i>Acacia disparrima</i> subsp. <i>disparrima</i>	<i>Aristida ramosa</i>	<i>Callistemon salignus</i>
<i>Acacia elongata</i>	<i>Aristida</i> spp.	<i>Calochlaena dubia</i>
<i>Acacia implexa</i>	<i>Aristida vagans</i>	<i>Calystegia marginata</i>
<i>Acacia irrorata</i>	<i>Aristida warburgii</i>	<i>Carex appressa</i>
<i>Acacia leiocalyx</i> subsp. <i>leiocalyx</i>	<i>Artanema fimbriatum</i>	<i>Carex gaudichaudiana</i>
<i>Acacia melanoxyton</i>	<i>Arthrochilus prolixus</i>	<i>Carex</i> spp.
<i>Acacia ulicifolia</i>	<i>Asplenium australasicum</i>	<i>Cassytha filiformis</i>
<i>Acmella grandiflora</i> var. <i>brachyglossa</i>	<i>Austromyrtus dulcis</i>	<i>Cassytha glabella</i>
<i>Acmena smithii</i>	<i>Austrostipa pubescens</i>	<i>Cassytha pubescens</i>
<i>Acronychia oblongifolia</i>	<i>Axonopus compressus</i>	<i>Cassytha racemosa</i> f. <i>muelleri</i>
<i>Acrotriche aggregata</i>	<i>Axonopus fissifolius</i>	<i>Casuarina glauca</i>
<i>Adiantum aethiopicum</i>	<i>Axonopus</i> spp.	<i>Caustis recurvata</i>
<i>Adiantum atroviride</i>	<i>Baccharis halimifolia</i>	<i>Cayratia clematidea</i>
<i>Adiantum hispidulum</i>	<i>Baeckea frutescens</i>	<i>Centella asiatica</i>
<i>Ageratina adenophora</i>	<i>Baloskion pallens</i>	<i>Centipeda minima</i> subsp. <i>minima</i>
<i>Ageratum houstonianum</i>	<i>Baloskion tetraphyllum</i>	<i>Centratherum riparium</i>
<i>Agiortia pedicellata</i>	<i>Baloskion tetraphyllum</i> subsp. <i>meiostachyum</i>	<i>Ceratopetalum gummiferum</i>
<i>Agiortia pleiosperma</i>	<i>Banksia aemula</i>	<i>Cheilanthes sieberi</i> subsp. <i>sieberi</i>
<i>Ajuga australis</i>	<i>Banksia integrifolia</i> subsp. <i>integrifolia</i>	<i>Chiloglottis diphylla</i>
<i>Allocasuarina littoralis</i>	<i>Banksia oblongifolia</i>	<i>Chloanthes parviflora</i>
<i>Allocasuarina torulosa</i>	<i>Banksia serrata</i>	<i>Chorizandra cymbaria</i>
<i>Alloteropsis semialata</i>	<i>Banksia spinulosa</i>	<i>Chorizandra sphaerocephala</i>
<i>Alphitonia excelsa</i>	<i>Banksia spinulosa</i> var. <i>collina</i>	<i>Chorizema parviflorum</i>
<i>Alstonia constricta</i> f. <i>pubescent</i>	<i>Bauera capitata</i>	<i>Chrysopogon filipes</i>
<i>Alternanthera denticulata</i>	<i>Baumea articulata</i>	<i>Cissus antarctica</i>
<i>Ambrosia artemisiifolia</i>	<i>Baumea juncea</i>	<i>Cissus hypoglauca</i>
<i>Amyema congener</i> subsp. <i>congener</i>	<i>Baumea rubiginosa</i>	<i>Clematis glycinoides</i>
<i>Amyema</i> spp.	<i>Baumea</i> spp.	<i>Clerodendrum floribundum</i> var. <i>floribundum</i>
<i>Andropogon virginicus</i>	<i>Benthamina alyxifolia</i>	<i>Clerodendrum tomentosum</i>
	<i>Bidens pilosa</i>	<i>Comesperma ericinum</i>
	<i>Billardiera scandens</i>	<i>Commelina cyanea</i>

Scientific name
<i>Conyza bonariensis</i>
<i>Conyza parva</i>
<i>Cordyline stricta</i>
<i>Corymbia gummifera</i>
<i>Corymbia henryi</i>
<i>Corymbia intermedia</i>
<i>Corymbia maculata</i>
<i>Crassocephalum crepidioides</i>
<i>Cryptocarya erythroxylon</i>
<i>Cryptocarya glaucescens</i>
<i>Cryptocarya microneura</i>
<i>Cryptocarya triplinervis</i> var. <i>pubens</i>
<i>Cryptostylis erecta</i>
<i>Cryptostylis</i> spp.
<i>Cryptostylis subulata</i>
<i>Cymbidium madidum</i>
<i>Cymbidium suave</i>
<i>Cymbopogon refractus</i>
<i>Cyperus exaltatus</i>
<i>Cyperus gunnii</i> subsp. <i>gunnii</i>
<i>Cyperus haspan</i> subsp. <i>haspan</i>
<i>Cyperus imbecillis</i>
<i>Cyperus polystachyos</i>
<i>Cyperus trinervis</i>
<i>Dampiera stricta</i>
<i>Davallia solida</i> var. <i>pyxidata</i>
<i>Daviesia ulicifolia</i>
<i>Daviesia ulicifolia</i> subsp. <i>stenophylla</i>
<i>Dendrobium kingianum</i>
<i>Dendrobium linguiforme</i>
<i>Dendrophthoe vitellina</i>
<i>Denhamia silvestris</i>
<i>Desmodium gunnii</i>
<i>Desmodium rhytidophyllum</i>
<i>Desmodium varians</i>
<i>Dianella caerulea</i>
<i>Dianella caerulea</i> var. <i>caerulea</i>
<i>Dianella caerulea</i> var. <i>producta</i>
<i>Dianella longifolia</i>
<i>Dianella longifolia</i> var. <i>longifolia</i>
<i>Dianella revoluta</i>

Scientific name
<i>Dianella revoluta</i> var. <i>revoluta</i>
<i>Dichelachne micrantha</i>
<i>Dichondra repens</i>
<i>Digitaria parviflora</i>
<i>Digitaria sanguinalis</i>
<i>Digitaria</i> spp.
<i>Dillwynia retorta</i>
<i>Dioscorea transversa</i>
<i>Dodonaea triquetra</i>
<i>Dodonaea viscosa</i>
<i>Drosera auriculata</i>
<i>Drosera spatulata</i>
<i>Duboisia myoporoides</i>
<i>Echinochloa telmatophila</i>
<i>Echinopogon caespitosus</i>
<i>Echinopogon caespitosus</i> var. <i>caespitosus</i>
<i>Echinopogon ovatus</i>
<i>Echinostephia aculeata</i>
<i>Eclipta platyglossa</i>
<i>Elaeocarpus obovatus</i>
<i>Elaeocarpus reticulatus</i>
<i>Endiandra discolor</i>
<i>Endiandra sieberi</i>
<i>Entolasia marginata</i>
<i>Entolasia stricta</i>
<i>Entolasia whiteana</i>
<i>Enydra woollsi</i>
<i>Epacris obtusifolia</i>
<i>Epaltes australis</i>
<i>Eragrostis brownii</i>
<i>Eragrostis interrupta</i>
<i>Eragrostis leptostachya</i>
<i>Eragrostis tenuifolia</i>
<i>Erechtites valerianifolia</i>
<i>Eremochloa bimaculata</i>
<i>Eucalyptus acmenoides</i>
<i>Eucalyptus baileyana</i>
<i>Eucalyptus carnea</i>
<i>Eucalyptus fibrosa</i>
<i>Eucalyptus microcorys</i>
<i>Eucalyptus moluccana</i>
<i>Eucalyptus notabilis</i>
<i>Eucalyptus pilularis</i>
<i>Eucalyptus propinqua</i>
<i>Eucalyptus pyrocarpa</i>

Scientific name
<i>Eucalyptus resinifera</i>
<i>Eucalyptus resinifera</i> subsp. <i>hemilampra</i>
<i>Eucalyptus robusta</i>
<i>Eucalyptus saligna</i>
<i>Eucalyptus seeana</i>
<i>Eucalyptus siderophloia</i>
<i>Eucalyptus signata</i>
<i>Eucalyptus</i> spp.
<i>Eucalyptus tereticornis</i>
<i>Eucalyptus tindaliae</i>
<i>Eucalyptus umbra</i>
<i>Eurychorda complanata</i>
<i>Eustrephus latifolius</i>
<i>Ficus coronata</i>
<i>Fimbristylis cinnamometorum</i>
<i>Fimbristylis dichotoma</i>
<i>Fimbristylis nutans</i>
<i>Flagellaria indica</i>
<i>Gahnia aspera</i>
<i>Gahnia clarkei</i>
<i>Gahnia sieberiana</i>
<i>Gahnia</i> spp.
<i>Galium liratum</i>
<i>Geitonoplesium cymosum</i>
<i>Geranium homeanum</i>
<i>Gleichenia dicarpa</i>
<i>Glochidion ferdinandi</i>
<i>Glycine clandestina</i>
<i>Glycine microphylla</i>
<i>Glycine</i> spp.
<i>Glycine tabacina</i>
<i>Gomphocarpus fruticosus</i>
<i>Gompholobium pinnatum</i>
<i>Gonocarpus chinensis</i> subsp. <i>verrucosus</i>
<i>Gonocarpus humilis</i>
<i>Gonocarpus micranthus</i>
<i>Gonocarpus micranthus</i> subsp. <i>ramosissimus</i>
<i>Gonocarpus</i> spp.
<i>Gonocarpus tetragynus</i>
<i>Goodenia bellidifolia</i> subsp. <i>argentea</i>
<i>Goodenia heterophylla</i>
<i>Goodenia paniculata</i>

Scientific name
<i>Goodenia rotundifolia</i>
<i>Grevillea humilis</i> subsp. <i>lucens</i>
<i>Guioa semiglauca</i>
<i>Gymnostachys anceps</i>
<i>Gynochthodes jasminoides</i>
<i>Haemodorum austroqueenslandicum</i>
<i>Haemodorum planifolium</i>
<i>Hakea actites</i>
<i>Hakea dactyloides</i>
<i>Hakea florulenta</i>
<i>Hakea salicifolia</i>
<i>Hardenbergia violacea</i>
<i>Hemarthria uncinata</i>
<i>Hibbertia acuminata</i>
<i>Hibbertia aspera</i>
<i>Hibbertia diffusa</i>
<i>Hibbertia empetrifolia</i> subsp. <i>empetrifolia</i>
<i>Hibbertia obtusifolia</i>
<i>Hibbertia scandens</i>
<i>Hibbertia serpyllifolia</i>
<i>Hibbertia</i> spp.
<i>Hibbertia vestita</i>
<i>Hibiscus splendens</i>
<i>Hybanthus stellarioides</i>
<i>Hybanthus vernonii</i> subsp. <i>vernonii</i>
<i>Hydrocotyle acutiloba</i>
<i>Hydrocotyle sibthorpioides</i>
<i>Hydrocotyle tripartita</i>
<i>Hymenosporum flavum</i>
<i>Hypericum gramineum</i>
<i>Hypericum japonicum</i>
<i>Hypochaeris radicata</i>
<i>Hypolepis muelleri</i>
<i>Imperata cylindrica</i>
<i>Isachne globosa</i>
<i>Ischaemum australe</i>
<i>Isotoma armstrongii</i>
<i>Jacksonia scoparia</i>
<i>Jagera pseudorhus</i> var. <i>pseudorhus</i>
<i>Juncus</i> spp.
<i>Juncus usitatus</i>
<i>Kennedia rubicunda</i>

Scientific name
<i>Lachnagrostis billardierei</i> subsp. <i>billardierei</i>
<i>Lachnagrostis filiformis</i>
<i>Lagenifera stipitata</i>
<i>Lagenophora gracilis</i>
<i>Lantana camara</i>
<i>Laxmannia gracilis</i>
<i>Lepidosperma laterale</i>
<i>Lepidosperma longitudinale</i>
<i>Lepironia articulata</i>
<i>Leptospermum brachyandrum</i>
<i>Leptospermum juniperinum</i>
<i>Leptospermum petersonii</i>
<i>Leptospermum polygalifolium</i>
<i>Leptospermum polygalifolium</i> subsp. <i>cismontanum</i>
<i>Leptospermum trinervium</i>
<i>Lepyrodia scariosa</i>
<i>Leucopogon ericoides</i>
<i>Leucopogon juniperinus</i>
<i>Leucopogon lanceolatus</i>
<i>Leucopogon lanceolatus</i> var. <i>gracilis</i>
<i>Leucopogon lanceolatus</i> var. <i>lanceolatus</i>
<i>Leucopogon leptospermoides</i>
<i>Leucopogon margarodes</i>
<i>Leucopogon</i> spp.
<i>Lindernia alsinoides</i>
<i>Lindsaea incisa</i>
<i>Lindsaea microphylla</i>
<i>Liparophyllum exaltatum</i>
<i>Lobelia anceps</i>
<i>Lobelia andrewsii</i>
<i>Lobelia dentata</i>
<i>Lobelia purpurascens</i>
<i>Lobelia stenophylla</i>
<i>Lobelia trigonocaulis</i>
<i>Lomandra confertifolia</i>
<i>Lomandra confertifolia</i> subsp. <i>pallida</i>
<i>Lomandra filiformis</i>
<i>Lomandra filiformis</i> subsp. <i>coriacea</i>
<i>Lomandra filiformis</i> subsp. <i>filiformis</i>
<i>Lomandra hystrix</i>

Scientific name
<i>Lomandra longifolia</i>
<i>Lomandra multiflora</i> subsp. <i>multiflora</i>
<i>Lomandra spicata</i>
<i>Lomandra</i> spp.
<i>Lomatia silaifolia</i>
<i>Lophostemon confertus</i>
<i>Lophostemon suaveolens</i>
<i>Lygodium microphyllum</i>
<i>Macrozamia fawcettii</i>
<i>Marsdenia fraseri</i>
<i>Marsdenia rostrata</i>
<i>Maundia triglochinosides</i>
<i>Melaleuca alternifolia</i>
<i>Melaleuca linariifolia</i>
<i>Melaleuca nodosa</i>
<i>Melaleuca quinquenervia</i>
<i>Melaleuca sieberi</i>
<i>Melaleuca styphelioides</i>
<i>Melaleuca thymifolia</i>
<i>Microlaena stipoides</i>
<i>Microlaena stipoides</i> var. <i>stipoides</i>
<i>Microstegium nudum</i>
<i>Mirbelia rubiifolia</i>
<i>Mitrasacme alsinoides</i>
<i>Monotoca scoparia</i>
<i>Murdannia graminea</i>
<i>Myrsine howittiana</i>
<i>Myrsine variabilis</i>
<i>Nematolepis squamea</i> subsp. <i>squamea</i>
<i>Notelaea longifolia</i>
<i>Notelaea ovata</i>
<i>Notothixos incanus</i>
<i>Opercularia diphylla</i>
<i>Oplismenus aemulus</i>
<i>Oplismenus imbecillis</i>
<i>Ottochloa gracillima</i>
<i>Oxalis chnoodes</i>
<i>Oxalis exilis</i>
<i>Oxalis perennans</i>
<i>Oxalis</i> spp.
<i>Oxylobium robustum</i>
<i>Pandorea pandorana</i>
<i>Panicum effusum</i>

Scientific name
<i>Panicum simile</i>
<i>Parsonia straminea</i>
<i>Paspalidium distans</i>
<i>Paspalidium grandispiculatum</i>
<i>Paspalum mandiocanum</i>
<i>Paspalum orbiculare</i>
<i>Paspalum urvillei</i>
<i>Passiflora herbertiana</i>
<i>Passiflora suberosa</i>
<i>Patersonia glabrata</i>
<i>Patersonia sericea</i>
<i>Pellaea viridis</i> var. <i>viridis</i>
<i>Persicaria strigosa</i>
<i>Persoonia adenantha</i>
<i>Persoonia stradbokensis</i>
<i>Persoonia tenuifolia</i>
<i>Petalostigma triloculare</i>
<i>Philydrum lanuginosum</i>
<i>Phragmites australis</i>
<i>Phyllanthus hirtellus</i>
<i>Phyllanthus virgatus</i>
<i>Phyllota phyllicoides</i>
<i>Picris</i> sp. nov.
<i>Pimelea latifolia</i>
<i>Pimelea linifolia</i>
<i>Pimelea linifolia</i> subsp. <i>linifolia</i>
<i>Pittosporum revolutum</i>
<i>Platynerium bifurcatum</i>
<i>Plectorrhiza tridentata</i>
<i>Polymeria calycina</i>
<i>Pomax umbellata</i>
<i>Poranthera microphylla</i>
<i>Potamogeton crispus</i>
<i>Potamogeton ochreatus</i>
<i>Potamogeton octandrus</i>
<i>Pseuderanthemum variabile</i>
<i>Pseudoraphis paradoxa</i>
<i>Pseudoraphis spinescens</i>
<i>Psychotria loniceroides</i>
<i>Pteridium esculentum</i>
<i>Pterostylis pedunculata</i>
<i>Pterostylis</i> spp.
<i>Ptilothrix deusta</i>

Scientific name
<i>Pultenaea myrtooides</i>
<i>Pultenaea paleacea</i>
<i>Pultenaea retusa</i>
<i>Pultenaea robusta</i>
<i>Pultenaea spinosa</i>
<i>Pultenaea villosa</i>
<i>Pyrrhosia confluens</i> var. <i>confluens</i>
<i>Ranunculus inundatus</i>
<i>Ranunculus</i> spp.
<i>Rhodamnia rubescens</i>
<i>Rhodomyrtus psidioides</i>
<i>Rhynchospora brownii</i>
<i>Richardia brasiliensis</i>
<i>Ripogonum album</i>
<i>Ripogonum discolor</i>
<i>Rostellularia adscendens</i>
<i>Rubus moluccanus</i>
<i>Rutidosis heterogama</i>
<i>Sacciolepis indica</i>
<i>Sannantha angusta</i>
<i>Sannantha collina</i>
<i>Sannantha pluriflora</i>
<i>Sannantha similis</i>
<i>Schizaea bifida</i>
<i>Schizomeria ovata</i>
<i>Schoenus brevifolius</i>
<i>Schoenus melanostachys</i>
<i>Selaginella uliginosa</i>
<i>Senecio madagascariensis</i>
<i>Senecio pinnatifolius</i> var. <i>lanceolatus</i>
<i>Setaria sphacelata</i>
<i>Sigesbeckia orientalis</i> subsp. <i>orientalis</i>
<i>Sisyrinchium rosulatum</i>
<i>Smilax australis</i>
<i>Smilax glycyphylla</i>
<i>Solanum densevestitum</i>
<i>Soliva anthemifolia</i>
<i>Sonchus oleraceus</i>
<i>Sorghum leiocladum</i>
<i>Sporobolus</i> spp.
<i>Stackhousia viminea</i>
<i>Stephania japonica</i> var.

Scientific name
<i>discolor</i>
<i>Stylidium debile</i>
<i>Stylidium tenerum</i>
<i>Swainsona galegifolia</i>
<i>Symplocos stawellii</i>
<i>Syncarpia glomulifera</i>
<i>Tabernaemontana pandacaqui</i>
<i>Telmatoblechnum indicum</i>
<i>Thelymitra</i> spp.
<i>Themeda triandra</i>
<i>Thysanotus juncifolius</i>
<i>Thysanotus tuberosus</i>
<i>Trachymene incisa</i>
<i>Trema tomentosa</i> var. <i>aspera</i>
<i>Tricoryne elatior</i>
<i>Tristaniopsis laurina</i>
<i>Trochocarpa laurina</i>
<i>Vernonia cinerea</i>
<i>Vernonia cinerea</i> var. <i>cinerea</i>
<i>Veronica calycina</i>
<i>Veronica plebeia</i>
<i>Viola banksii</i>
<i>Viola betonicifolia</i>
<i>Viola hederacea</i>
<i>Wahlenbergia stricta</i> subsp. <i>stricta</i>
<i>Waterhousea floribunda</i>
<i>Xanthorrhoea fulva</i>
<i>Xanthorrhoea latifolia</i>
<i>Xanthorrhoea latifolia</i> subsp. <i>latifolia</i>
<i>Xanthorrhoea macronema</i>
<i>Xanthorrhoea resinosa</i>
<i>Xanthorrhoea</i> spp.
<i>Xyris complanata</i>
<i>Xyris gracilis</i>
<i>Xyris juncea</i>
<i>Zieria minutiflora</i> subsp. <i>minutiflora</i>
<i>Zieria pilosa</i>
<i>Zornia dyctiocarpa</i> var. <i>dyctiocarpa</i>

APPENDIX 4 – FAUNA SPECIES LIST

Fauna found within 5000m of Flora Reserve, desktop search undertaken in October 2021

Amphibians and reptiles	
Scientific name	Common name
<i>Litoria dentata</i>	Bleating Tree Frog
<i>Litoria latopalmata</i>	Broad-palmed Frog
<i>Limnodynastes peronii</i>	Brown-striped Frog
<i>Rhinella marina</i>	Cane Toad
<i>Crinia signifera</i>	Common Eastern Froglet
<i>Litoria gracilentata</i>	Dainty Green Tree Frog
<i>Uperoleia fusca</i>	Dusky Toadlet
<i>Litoria fallax</i>	Eastern Dwarf Tree Frog
<i>Crinia parinsignifera</i>	Eastern Sign-bearing Froglet
<i>Litoria freycineti</i>	Freycinet's Frog
<i>Mixophyes iteratus</i>	Giant Barred Frog
<i>Mixophyes fasciolatus</i>	Great Barred Frog
<i>Litoria caerulea</i>	Green Tree Frog
<i>Litoria brevipalmata</i>	Green-thighed Frog
<i>Litoria lesueuri</i>	Lesueur's Frog
<i>Limnodynastes</i>	Northern

Amphibians and reptiles	
Scientific name	Common name
<i>terraereginae</i>	Banjo Frog
<i>Platyplectrum ornatum</i>	Ornate Burrowing Frog
<i>Litoria peronii</i>	Peron's Tree Frog
<i>Pseudophryne coriacea</i>	Red-backed Toadlet
<i>Litoria revelata</i>	Revealed Frog
<i>Litoria nasuta</i>	Rocket Frog
<i>Limnodynastes salmini</i>	Salmon Striped Frog
<i>Limnodynastes tasmaniensis</i>	Spotted Grass Frog
<i>Adelotus brevis</i>	Tusked Frog
<i>Litoria tyleri</i>	Tyler's Tree Frog
<i>Crinia tinnula</i>	Wallum Froglet
<i>Concinnia tenuis</i>	Barred-sided Skink
<i>Pogona barbata</i>	Bearded Dragon
<i>Anilius sp.</i>	blind snake
<i>Dendrelaphis punctulatus</i>	Common Tree Snake
<i>Ctenotus taeniolatus</i>	Copper-tailed Skink
<i>Lampropholis delicata</i>	Dark-flecked Garden

Amphibians and reptiles	
Scientific name	Common name
	Sunskink
<i>Pseudonaja textilis</i>	Eastern Brown Snake
<i>Morelia spilota mcdowelli</i>	Eastern Carpet Python
<i>Egernia mcphreei</i>	Eastern Crevice Skink
<i>Chelodina longicollis</i>	Eastern Snake-necked Turtle
<i>Intelligama lesueurii</i>	Eastern Water Dragon
<i>Eulamprus quoyii</i>	Eastern Water-skink
<i>Cacophis squamulosus</i>	Golden-crowned Snake
<i>Varanus varius</i>	Lace Monitor
<i>Cyclodomorphus gerrardii</i>	Pink-tongued Lizard
<i>Pseudechis porphyriacus</i>	Red-bellied Black Snake
<i>Calyptotis ruficauda</i>	Red-tailed Calyptotis
<i>Hoplocephalus stephensii</i>	Stephens' Banded Snake
<i>Demansia psammophis</i>	Yellow-faced Whip Snake

Birds	
Scientific name	Common name
<i>Sphecotheres vieilloti</i>	Australasian Figbird
<i>Alisterus scapularis</i>	Australian King-Parrot
<i>Gymnorhina tibicen</i>	Australian Magpie
<i>Aegotheles cristatus</i>	Australian Owlet-nightjar

Birds	
Scientific name	Common name
<i>Threskiornis moluccus</i>	Australian White Ibis
<i>Ninox connivens</i>	Barking Owl
<i>Geopelia humeralis</i>	Bar-shouldered Dove
<i>Coracina novaehollandiae</i>	Black-faced Cuckoo-shrike
<i>Ephippiorhynchus</i>	Black-necked

Birds	
Scientific name	Common name
<i>asiaticus</i>	Stork
<i>Entomyzon cyanotis</i>	Blue-faced Honeyeater
<i>Acanthiza pusilla</i>	Brown Thornbill
<i>Cacomantis variolosus</i>	Brush Cuckoo
<i>Burhinus grallarius</i>	Bush Stone-curlew

Birds	
Scientific name	Common name
<i>Edolisoma tenuirostris</i>	Cicadabird
<i>Phaps chalcoptera</i>	Common Bronzewing
<i>Eurystomus orientalis</i>	Dollarbird
<i>Eudynamys orientalis</i>	Eastern Koel
<i>Acanthorhynchus tenuirostris</i>	Eastern Spinebill
<i>Psophodes olivaceus</i>	Eastern Whipbird
<i>Eopsaltria australis</i>	Eastern Yellow Robin
<i>Chalcophaps indica</i>	Emerald Dove
<i>Dromaius novaehollandiae</i>	Emu
<i>Cacomantis flabelliformis</i>	Fan-tailed Cuckoo
<i>Ptilotula fusca</i>	Fuscous Honeyeater
<i>Calyptorhynchus lathami</i>	Glossy Black-Cockatoo
<i>Pachycephala pectoralis</i>	Golden Whistler
<i>Cracticus torquatus</i>	Grey Butcherbird
<i>Rhipidura albiscapa</i>	Grey Fantail
<i>Colluricincla harmonica</i>	Grey Shrike-thrush
<i>Dacelo novaeguineae</i>	Laughing Kookaburra
<i>Myiagra rubecula</i>	Leaden Flycatcher
<i>Meliphaga lewinii</i>	Lewin's Honeyeater
<i>Glossopsitta pusilla</i>	Little Lorikeet
<i>Cacatua tenuirostris</i>	Long-billed Corella
<i>Tyto novaehollandiae</i>	Masked Owl
<i>Artamus personatus</i>	Masked Woodswallow
<i>Dicaeum</i>	Mistletoebird

Birds	
Scientific name	Common name
<i>hirundinaceum</i>	
<i>Glossopsitta concinna</i>	Musk Lorikeet
<i>Philemon corniculatus</i>	Noisy Friarbird
<i>Manorina melanocephala</i>	Noisy Miner
<i>Oriolus sagittatus</i>	Olive-backed Oriole
<i>Anas superciliosa</i>	Pacific Black Duck
<i>Turnix varius</i>	Painted Button-quail
<i>Geopelia striata</i>	Peaceful Dove
<i>Centropus phasianinus</i>	Pheasant Coucal
<i>Cracticus nigrogularis</i>	Pied Butcherbird
<i>Ninox strenua</i>	Powerful Owl
<i>Porphyrio porphyrio</i>	Purple Swamphen
<i>Merops ornatus</i>	Rainbow Bee-eater
<i>Trichoglossus haematodus</i>	Rainbow Lorikeet
<i>Neochmia temporalis</i>	Red-browed Finch
<i>Platalea regia</i>	Royal Spoonbill
<i>Rhipidura rufifrons</i>	Rufous Fantail
<i>Pachycephala rufiventris</i>	Rufous Whistler
<i>Todiramphus sanctus</i>	Sacred Kingfisher
<i>Trichoglossus chlorolepidotus</i>	Scaly-breasted Lorikeet
<i>Myzomela sanguinolenta</i>	Scarlet Honeyeater
<i>Chalcites lucidus</i>	Shining Bronze-Cuckoo
<i>Ninox novaeseelandiae</i>	Southern Boobook
<i>Pardalotus</i>	Spotted

Birds	
Scientific name	Common name
<i>punctatus</i>	Pardalote
<i>Lophoictinia isura</i>	Square-tailed Kite
<i>Threskiornis spinicollis</i>	Straw-necked Ibis
<i>Acanthiza lineata</i>	Striated Thornbill
<i>Circus approximans</i>	Swamp Harrier
<i>Podargus strigoides</i>	Tawny Frogmouth
<i>Gliciphila melanops</i>	Tawny-crowned Honeyeater
<i>Corvus orru</i>	Torresian Crow
<i>Lalage leucomela</i>	Varied Triller
<i>Malurus lamberti</i>	Variegated Fairy-wren
<i>Sericornis frontalis</i>	White-browed Scrubwren
<i>Phylidonyris niger</i>	White-cheeked Honeyeater
<i>Egretta novaehollandiae</i>	White-faced Heron
<i>Melithreptus lunatus</i>	White-naped Honeyeater
<i>Ardea pacifica</i>	White-necked Heron
<i>Gerygone olivacea</i>	White-throated Gerygone
<i>Eurostopodus mystacalis</i>	White-throated Nightjar
<i>Cormobates leucophaea</i>	White-throated Treecreeper
<i>Rhipidura leucophrys</i>	Willie Wagtail
<i>Leucosarcia melanoleuca</i>	Wonga Pigeon
<i>Caligavis chrysops</i>	Yellow-faced Honeyeater

Mammals	
Scientific name	Common name

Mammals	
Scientific name	Common name
<i>Pteropus alecto</i>	Black Flying-fox
<i>Macropus dorsalis</i>	Black-striped Wallaby
<i>Trichosurus sp.</i>	Brush-tail possum
<i>Phascogale tapoatafa</i>	Brush-tailed Phascogale
<i>Planigale maculata</i>	Common Planigale
<i>Canis lupus</i>	Dingo, domestic dog
<i>Vespudelus pumilus</i>	Eastern Forest Bat
<i>Macropus giganteus</i>	Eastern Grey Kangaroo
<i>Rhinolophus megaphyllus</i>	Eastern Horseshoe-bat
<i>Nyctophilus bifax</i>	Eastern Long-eared Bat
<i>Acrobates pygmaeus</i>	Feathertail Glider
<i>Nyctophilus</i>	Gould's Long-

Mammals	
Scientific name	Common name
<i>gouldi</i>	eared Bat
<i>Scoteanax rueppellii</i>	Greater Broad-nosed Bat
<i>Petauroides volans</i>	Greater Glider
<i>Pteropus poliocephalus</i>	Grey-headed Flying-fox
<i>Phascolarctos cinereus</i>	Koala
<i>Miniopterus orianae oceanensis</i>	Large Bent-winged Bat
<i>Miniopterus australis</i>	Little Bent-winged Bat
<i>Perameles nasuta</i>	Long-nosed Bandicoot
<i>Sus scrofa</i>	Pig
<i>Ornithorhynchus anatinus</i>	Platypus
<i>Thylogale thetis</i>	Red-necked Pademelon
<i>Notamacropus</i>	Red-necked

Mammals	
Scientific name	Common name
<i>rufogriseus</i>	Wallaby
<i>Tachyglossus aculeatus</i>	Short-beaked Echidna
<i>Trichosurus caninus</i>	Short-eared Possum
<i>Myotis macropus</i>	Southern Myotis
<i>Dasyurus maculatus</i>	Spotted-tailed Quoll
<i>Petaurus norfolcensis</i>	Squirrel Glider
<i>Petaurus breviceps</i>	Sugar Glider
<i>Wallabia bicolor</i>	Swamp Wallaby
<i>Macropod sp.</i>	unidentified macropod
<i>Austronomus australis</i>	White-striped Freetail-bat
<i>Petaurus australis</i>	Yellow-bellied Glider

APPENDIX 5 – APPROVAL AND AMENDMENTS FROM PREVIOUS VERSION

In line with section 25 of the *Forestry Act 2012*, flora reserve working plans and any amendments must be approved by the Minister.

This plan was approved by The Hon. Tara Moriarty MLC, Minister for Agriculture, Minister for Regional New South Wales and Minister for Western New South Wales

Date of approval: 6/9/23

Version	Changes	Approval details
1.0	<ul style="list-style-type: none"> » First version of the Paperbark Flora Reserve Working Plan 	<ul style="list-style-type: none"> » The Hon. Tara Moriarty MLC, Minister for Agriculture, Minister for Regional New South Wales and Minister for Western New South Wales, 6/9/23