



LOCALITY MAP WESTERN REGION - HARVEST PLAN



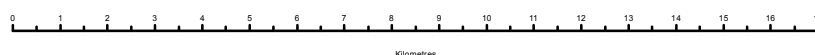
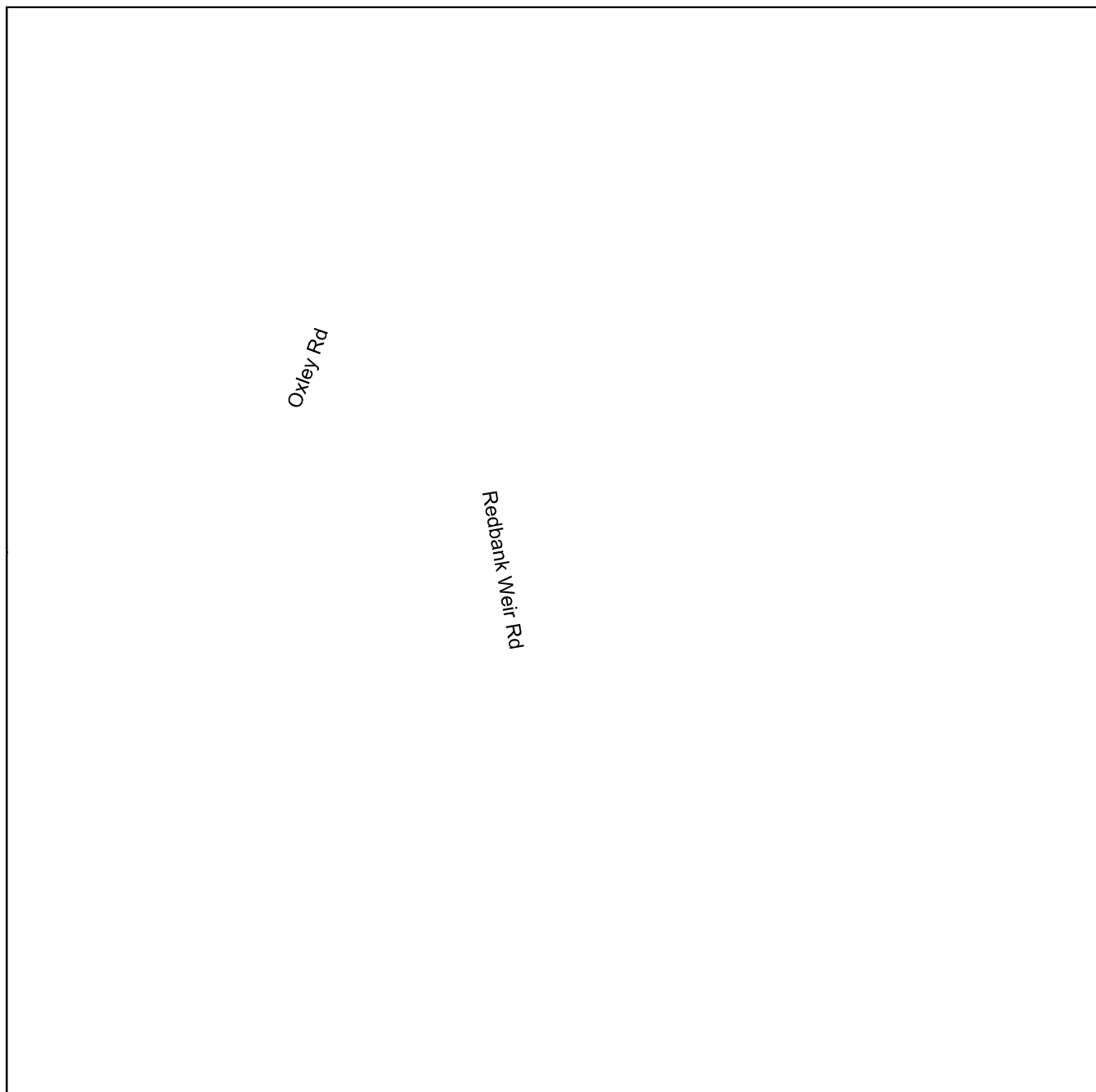
Western Land Lease: "Coates"

Compartment: 4798

Management Area: Mildura

Map Sheet: PAIKA 7629

Scale: 1:150,000



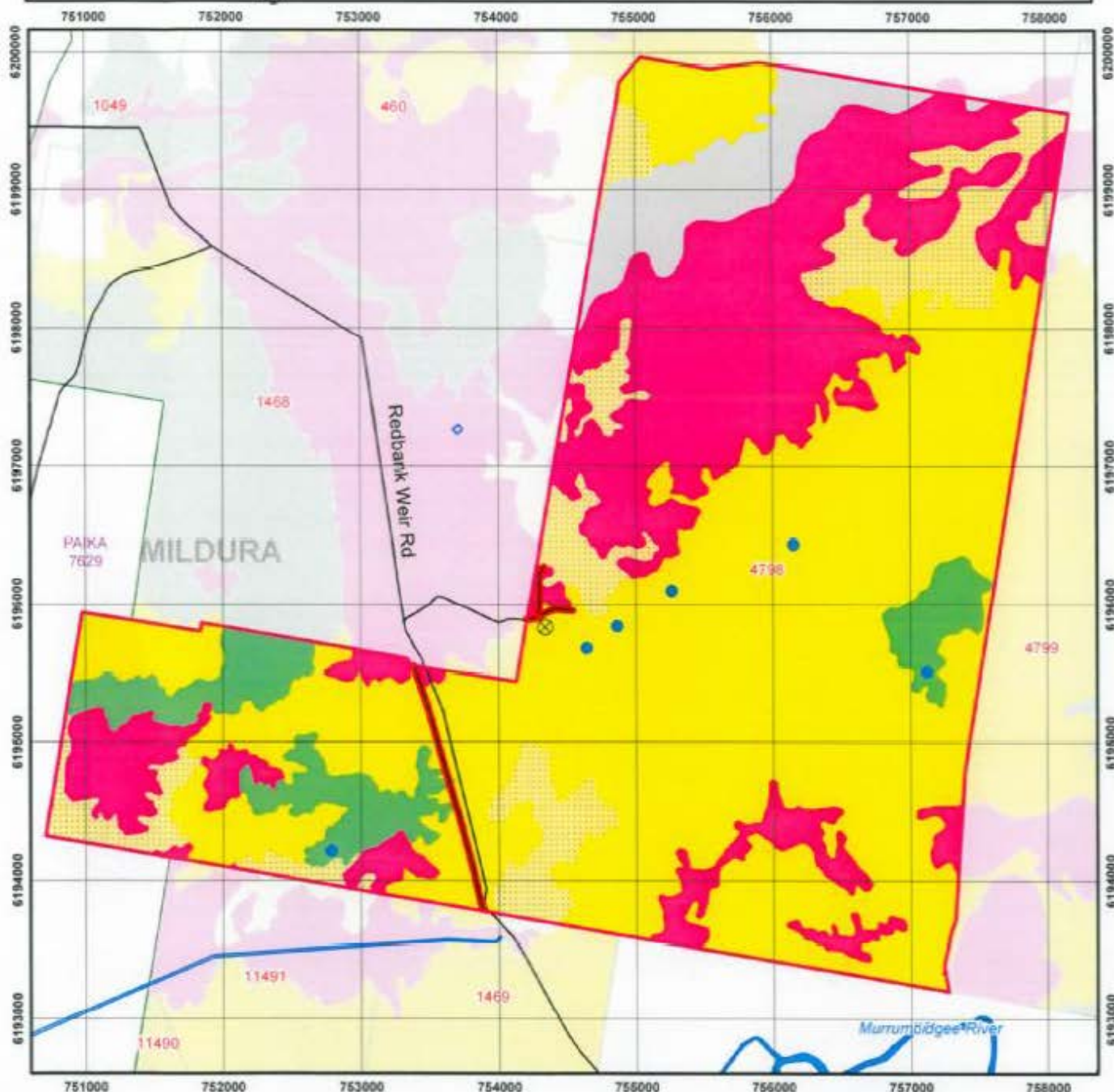
- Emergency Evacuation Points
- Compartment(s) of interest
- Roads
- Major Drainage

HARVEST PLAN OPERATIONAL MAP
Western Region - Harvest Plan WRhfrt1303
Western Land Lease "Coates"
Compartment 4798

Date: 2/5/2013

Approved: _____

Scale: 1:40,000



0 0.25 0.5 1 1.5 2 2.5 Kilometers

General Features

- Glider Sap Feed Tree
- Inventory/Research Plots
- Log Dump (permanent)
- Trig/Repeater Station
- Heritage Points
- Aboriginal Points
- Contour

Roads

- Highway
- Road
- Crossing
- Harvest Roads**
 - Operation
 - Proposed

Water Features

- Drainage
- Water Bodies

Boundaries

- Compartment of Interest
- State Forest Boundary
- Management Boundary
- NSW Topo

Harvest Area/Tract

- Red Gum SQ1
- Red Gum SQ2
- Red Gum SQ3
- Red Gum/Box

Non-Harvest Area

- Special Protection (FMZ 1)
- Special Management (FMZ 2)
- Harvesting Exclusion (FMZ 3A)
- Flora/Fauna Exclusion Units
- Box
- Open Plain or Swamp
- Untyped Unproductive or unknown

Modified Harvest Area

- Special Prescription (Zone 3B)
- Habitat Corridor/Buffer (Zone 3B 30m)
- Potential Buffer to assess in field
- Potential drainage buffer to assess in field

FORESTRY CORPORATION OF NEW SOUTH WALES - WESTERN REGION NATIVE FOREST HARVESTING PLAN

Refer: FPC 2010/01



**Forestry
Corporation**

Western Land Lease – "Coates" 4798

Certification

This plan has been prepared in accordance with the Integrated Forestry Operations Approval issued under the Forestry and National Park Estate Act 1998. The Standard Harvest Plan Conditions for Native Forest Operations in Western Region – Riverina Red Gum apply to this operation.

Prepared by: Kelly Williamson	Endorsed by: Ross Irvine	Approved by: Warwick Bratby
Assistant District Manager	Environment and Resources Manager	Regional Manager
Signature	Signature	Signature
Date 30/4/2013	Date 2/5/2013	Date 2/5/2013

Note: Approval includes the Harvest Plan Operational Map (HPOM) with the corresponding approval date displayed on the map, verifying final approved version. Locality and forest type maps are included for information only and do not form a part of this approval.

PRE-OPERATIONAL BRIEFING (SUPERVISING FOREST OFFICER ACKNOWLEDGMENT)

I confirm that I have received a copy of the Harvest Plan for the above Compartment. I have been briefed on the conditions of the Plan. I understand the requirements for supervision and operational control as explained to me by the Forest Manager or his/her delegate.

SUPERVISING FOREST OFFICER: _____

Signature: _____ Date: _____

PRE-OPERATIONAL BRIEFING (LICENSEE/CONTRACTOR ACKNOWLEDGMENT)

I confirm that I have received a copy of this Harvest Plan and that:

- ☐ I understand the conditions of the Plan,
- ☐ I will inform all relevant people not present at this briefing, prior to them starting operations, of these aspects of the Plan, as explained to me by a Forestry Corporation officer.

Signature: _____ Name: _____ Date: _____

Position: _____ Licence No: _____

Principal licensee/contractor/other (explain)

Description of Proposal

High and low quality sawlogs as well as green and dry residue logs will be harvested under regulation of the Integrated Forest Operations Approval for Riverina Red Gum (RRG IFOA).

The operation will use mainly mechanical harvesting to produce logs and forward them to dumps. The logs will be removed from the forest by truck.

Natural regeneration is planned. No after-harvest burning or planting is proposed.

Attachment 1: Site Safety Plan prescribes the safety requirements and Medical Emergency Evacuation Plan for this harvesting operation.

No construction, reopening or upgrading of roads or bush tracks is proposed. Maintenance of existing roads will occur on an ‘as needs’ basis in agreement/conjunction with the Western Lands Lease holder.

Area Identification and Yield Estimates

State Forest	Compartment/s	Region	Management Area	Harvest Plan ID
Western Land Lease	4798	Western	Mildura	

COMPARTMENT	4798
Event ID	
Gross Area (ha)	2652 ha
Net Harvest Area (ha)-Tract	1874 ha
Estimated Yield HQL Sawlog (m ³)	100 - 500m ³
Estimated Yield Other Sawlog (m ³)	200 - 2000m ³
Estimated Yield Residue (t)	1000 - 5000t

Silviculture and Harvesting Prescriptions

Western Lands Lease 4798 is largely used by the lease holders as a grazing property, situated on a broad floodplain on the north side of the Murrumbidgee River. Sparse to dense River Red Gum occurs over the majority of the area, with some Black Box on higher ground and open plains and sandhills scattered throughout.

80 hectares of the lease was harvested for sawlogs in the late 1980's, with some residues recovered from this operation in the late 1990's. Around 900 hectares were burnt by wildfire in 2001. Some of the unlogged areas were harvested in 2002/3. Dead standing trees and on-ground residues were harvested under a Commercial Residues harvest plan approved in 2005 and this has been continuing intermittently since 2010 affected by floodwater over multiple flood events

As at April 2013 there still remains a significant amount of on-ground residues to recover, as well as the need to conduct thinning and single tree selection across the harvestable area. Resetting the stand to optimise growth on retained trees and encourage regeneration following future flood events is the key management objective of the proposed harvesting activities.

Silvicultural Planning

Given the diverse stand structure, a number of techniques will be employed by the Supervising Forest Officer (SFO) across the forested area, including Single Tree Selection in the less stocked areas, along with both Thinning where required.

Single Tree Selection

Across the planning area, Single Tree Selection (STS) must remove the overstorey to allow regeneration to develop.

- In higher quality areas STS must remove the commercial older overstorey trees and retain the younger vigorous trees of the advanced regeneration (the useful growing stock) – STS Release
- In areas of poorer quality (dead and dying), or where no second stratum is present, STS must remove commercial trees that have reached their end point, creating gaps for regeneration – STS Regeneration

Thinning

Thick stands of early mature/juvenile trees will be thinned from below to provide adequate spacing to allow the remaining dominant and co-dominant trees to maintain vigour.

- Thinning must be from below, removing the commercial trees with the poorest growth or commercial potential (usually suppressed, subdominant or smaller diameter codominant trees, or damaged/diseased trees) and retaining the trees with the best growth and commercial potential (usually dominant or larger diameter codominant trees).
- Retained dominant and codominant trees of the same age class must be spaced far enough apart so that their crowns have just enough room to grow together again by the time of the next harvesting operation (approximately 25 to 30 years).
- Retained basal area of dominant and codominant trees must be at least 12m²/ha (within the net operational area).

Harvesting Prescription

Stand type	% of net area	Area (refer to HPOM for details)	Treatment Refer to <i>Standard Harvest Plan Conditions for Native Forest Operations in Western Region. – Riverina Red Gum</i> for more detail.
Mature to over-mature Red Gum	80%	Harvest tract	<ul style="list-style-type: none"> • STS Release • STS Regeneration
Early mature to mature thick Red Gum stands	20%	Harvest tract	<ul style="list-style-type: none"> • Thinning

The SFO will ensure that all relevant tree retention and silvicultural prescriptions are met during harvesting operations. The area of any change to the silvicultural treatment must be mapped and recorded in the Post-logging information section of this plan, and on the Harvest Plan Operational Map.

The operation must, as far as practicable, not damage individual plants of good form regeneration or sapling size red gum, especially where there are few others nearby.

Tree Marking

Tree marking will occur in buffer zones and areas the SFO deems necessary under the conditions as listed in Standard Harvest Plan Conditions for Native Forest Operations in Western Region. – Riverina Red Gum. The SFO will advise the operator, through the provision of a mapped area, the areas Tree Marking is to be followed.

Where an area is marked for **retention**, the operation must, as far as practicable:

- For the allowed species, fall each tree not marked for retention, unless it clearly does not meet the product standard, and
- Not fall or damage trees marked for retention, or marked as boundary trees.

And / or

Where an area is marked for **removal**, the operation must, as far as practicable:

- For the allowed species, fall each tree marked for removal, unless it clearly does not meet the product standard, *AND*
- Not fall or damage trees not marked for removal, particularly those marked for retention or marked as boundary trees.

Special Conditions

Critical boundaries

The lease is bounded by fences and on all sides. Refer to the Operational map for more detail. Marking of the lease boundary may not be necessary on all boundaries.

All boundaries on the Operational Map, except lease boundaries, are indicative only. Actual boundaries established in the field, for example between River Red Gum and other forest types, have precedence over boundaries shown on the Operational Map

- Non harvest areas, including the boundary of Protected forest types, are to be located in the field based on observable, rather than mapped, conditions.
- The SFO must report to the Supervising Forester where discernable differences are noted between the mapped and actual boundaries and record any changes in the SFO's copy of the Harvest Plan.

Research / Inventory Plots

There are no recorded plots within the lease.

Leases/OPs

The area is Western Lands lease. The lessee's rights must be respected. In particular:

- Fences. No fence may be damaged except at places approved by the Supervising Forest Officer. Any damage to a fence by the Contractor must be immediately reported to the lessee via the Supervising Forest Officer and fixed immediately by the Contractor.
- Gates and roads. The Contractor must keep the gate(s) on the property as found (open or closed). Existing roads must not be blocked or damaged. Any damage must be repaired immediately.

- Debris and stumps. Trees must be felled to minimise the level of work required to stack, pile and burn the tree heads on completion of the operation if requested by the lessee, outside of this harvest plan.
- Apiary Sites. A 20m buffer must be applied around each bee hive encountered.

Transmission Lines/Cables/Pipelines

- No powerlines have been recorded in the corporate system, though harvesting operations should expect small lines around dwellings and farm sheds.

Forest Management Zoning Conditions

FMZ 3A Harvest exclusion zone exists in the lease as non-River Red Gum as indicated on the Operational Map, and fall outside of the harvesting tract.

A 30m buffer zone also applies to both mapped and unmapped drainage depressions without mapped exclusion zones on the operational map that meet the IFOA criteria, and is to be marked-up by the SFO.

See Standard Harvest Plan Conditions for Native Forest Operations in Western Region.
– Riverina Red Gum for conditions of tree marking and modified harvesting zone.

FMZ 4 ‘General Management’ occurs within the compartment (shown on HPOM). Normal harvesting prescriptions apply in this area.

Cultural Heritage Conditions

There are no cultural heritage sites (Aboriginal or non-Aboriginal) known in this compartment. If a site that might be a cultural heritage site is found:

- Its location must be promptly reported to the Forestry Office via Supervising Forest Officer.
- A 20m no-harvest zone must be applied around this site until advised otherwise

The SFO must record the location of all cultural heritage sites on the Operational Map, and report to the Supervising Forester.

- An exclusion zone around an Aboriginal scar tree must be a minimum of 20 metres wide.
- An exclusion zone around a midden or artefact must be a minimum of 10 meters wide
- Harvesting machinery must not operate on sandhills.

Flora and Fauna Conditions

The SFO must search for threatened species and mark-up the block as per the Standard Harvest Plan Conditions for Native Forest Operations in Western Region. – Riverina Red Gum.

Mark-up Conditions

Refer to Standard Harvest Plan Conditions for Native Forest Operations in Western Region. – Riverina Red Gum for prescriptions.

Tree retention Conditions

Refer to Standard Harvest Plan Conditions for Native Forest Operations in Western Region. – Riverina Red Gum for prescriptions.

Site-Specific Conditions, Exclusion Zones & Modified Harvest Areas

There are no known areas of endangered ecological community (EEC) occurring within the net operational area that need additional harvest exclusions or modified harvesting zones implemented.

The SFO should watch out for any of these areas that may occur.

Some drainage lines to assess were found during Flora and Fauna traverse, as shown on the HPOM. The SFO is to apply the relevant conditions on assessment of the features, these have been mapped further using aerial photography and will need to be assessed on the ground for their eligibility.

Refer to Standard Harvest Plan Conditions for Native Forest Operations in Western Region. – Riverina Red Gum for prescriptions.

Species Known or Likely to Occur

No observations or historical records of threatened fauna or flora features, or those listed in Clause 168 of the IFOA, have been made on the lease that require prescriptions within the plan. The SFO should watch out for any of these that may occur.

Contractors and supervisory staff must immediately report any sightings of Schedule 1 and 2 species to the Supervising Forester. The Harvesting Plan must then be amended to include additional prescriptions if necessary.

Threatened species and habitat feature	IFOA Clause	Site-specific prescription / Buffer radius
Superb parrot nest	198	100m
Regent parrot nest	198	100m
Square-tailed kite nest or roost	198	200m
Little eagle nest or roost	198	200m
Any threatened owl nest or roost	198	200m
Spotted harrier nest or roost	198	200m
Bush stone curlew nest	198	100m
Gilbert's Whistler nest	198	20m

Threatened species and habitat feature	IFOA Clause	Site-specific prescription / Buffer radius
Gilbert's Whistler record	210	300m no 'dry' residue harvest
Microchiropteran bat roost tree	199	30m
Koala in tree	200 (1,c)	30m
Koala high-use area	200 (1,b)	100m

Fisheries Licence Conditions

Applicable Fisheries Licence conditions are detailed in the Riverina Red Gum IFOA. Refer to Standard Harvest Plan Conditions for Native Forest Operations in Western Region. – Riverina Red Gum for prescriptions.

Soil and Water Protection Conditions

Applicable Environmental Protection Licence conditions are detailed in the Riverina Red Gum IFOA. Refer to Standard Harvest Plan Conditions for Native Forest Operations in Western Region. – Riverina Red Gum for prescriptions.

Site-specific EPL conditions – The following features occur within the planned area. Refer to operational map for more detail.

Elements	Conditions
Mapped drainage depression or wetland depression	30 m Buffer Zone
Unmapped drainage depression or wetland depression (>400 m ²)	30 m Buffer Zone
Dams	10m

A drainage depression constitutes any channel where natural surface water concentrates and flows, averages 5m width or greater, 0.5m deep and 500m in length, and does not contain any live trees greater than 150mm dbhob within its banks.

A wetland depression constitutes any visible (average 0.5m deep at at least one point compared to general ground level) shallow, open depression of at least 400m² where there are no live trees over 150mm dbhob. They may or may not be connected to other drainage features or fed by a seasonal, permanent or intermittent water table at or slightly above the floor of the depression.

It is the responsibility of the SFO to identify any exclusion areas which will need to be crossed during harvesting. The SFO should then contact the Planning Forester to obtain the necessary approval.

There are no new road, snig / extraction track drainage line crossings anticipated or approved for use on drainage features within this operation. Existing crossings may be used and maintained.

Road Works Conditions

Existing road and track network, including drainage line crossings, may be used by the operator, and will require maintenance of these as necessary or in agreement with the Western Lands Lease holder.

Existing roads and tracks part of the farm operation that run along the course of drainage features are not to be used by this harvest operation.

The creation of new roads for the purposes of this harvesting operation need first to be mapped and approved before work can commence, and would form an amendment to this harvest plan.

Legal Conditions

This operation may only proceed while this operational plan, the relevant site safety plan and the Standard Harvest Plan Conditions for Native Forest Operations in Western Region. – Riverina Red Gum are held on site.

This operation must comply with the following:

- q Standard Harvest Plan Conditions for Native Forest Operations in Western Region. – Riverina Red Gum
- q Licence conditions issued by Forests NSW under the Forestry Act (1916).
- q Forest Practices Code, Part 2, Timber Harvesting In Native Forests (4th edition 1999).
- q Forest Practices Code, Part 4, Forest Roads and Fire Trails (1999).
- q Integrated Forestry Operations Approval issued under Part 4 of the Forestry and National Parks Estate Act 1998 (IFOA) as amended May 2003 including associated licences:
 - o Threatened Species Conservation Licence (TSCL) issued under the Threatened Species Conservation Act 1995
 - o Fisheries Management Licence issued under Part 7 (Div 3) Fisheries Management Act 1994
 - o Environmental Protection Licence (EPL) issued under the Protection of the Environment Operations Act 1997.

Date of cessation of logging: _____

DUMP USAGE RECORD

- Record the commencement and completion of harvesting at each dump

[illegible]

* GPS coordinates in WGS84 Zone: 54

Supervising Forest Officer's Notes

[illegible]

Certificate Of Clearance To Move From Current Compartment(s)

To: _____, Supervising Forest Officer.

I request approval to move my logging crew and all associated machinery from Compartment(s) _____ in _____ State Forest to the next area in accordance with Section 5.5 of the Forest Practices Code Part 2 Timber Harvesting In Native Forests.

I certify that:

- ☐ all permanent roads, trails and mitre drains have been cleared of harvesting debris;
- ☐ butt damage to retained trees has been kept to acceptable limits;
- ☐ all trees marked for removal have been felled;
- ☐ utilisation limits have been satisfactorily met;
- ☐ stump heights conform to requirements;
- ☐ all hanging trees have been brought down;
- ☐ all log dump sites have been satisfactorily restored as required;
- ☐ harvesting debris is not accumulated around retained trees;
- ☐ all accumulated litter has been disposed of properly;
- ☐ all modified harvesting conditions have been complied with;
- ☐ all snig track and road drainage has been installed satisfactorily and other required rehabilitation work has been completed;
- ☐ all necessary repairs to damaged roads, signs, fences and other structures have been carried out.
- ☐ all machinery has been washed down (if required) to prevent the spread of noxious weeds or pests.

I believe that I have met all my obligations under the conditions of the Timber Licence that applies to the area just completed and any N&PW Act Licence that applies to the area just completed, as stated in this Harvest Plan.

Signature: _____ Licence No: _____
 _____ Date: _____
 Licensee/Contractor

As a result of inspections of the logging operations carried out in accordance with this Harvest Plan, I am satisfied that, to the best of my knowledge, the harvesting licensee/contractor responsible for this harvesting operation has satisfactorily completed all work. Approval is given for her/him to remove her/his machinery and equipment and leave the area/commence operations in another harvesting plan area, being:

Compartment(s): _____, in _____ State Forest.

This clearance does not release the licensee/contractor from any obligation to undertake any remedial work if deficiencies, found during any inspections of the area made within 12 months of the date of this post-harvesting inspection, are shown to have resulted from inadequate practices during the harvesting operation.

Date of last inspection of the area by the Supervising Forest Officer: _____

Supervising Forest Officer _____ date: _____
 Signature Name

HARVEST PLAN AMENDMENT RECORD

--	--	--

Amendment No. & type			Date Prepared	Amendment Details	All Copies Amended	Signature
Number	Major	Minor				
1						
2						
3						
4						
5						
6						
7						
8						
9						
10						
11						
12						

Note: The purpose of this log is to track amendments to the Harvest Plan from time of first approval. All maps, Harvest Plans etc. are to be clearly identified with a version # and date so that changes to the Plan may be clearly identifiable. The Harvest Planner is responsible for ensuring all amendments are implemented, recorded and filed

Supervising Forest Officer's Hand-Over Acknowledgment

I confirm that I have received a copy of the Harvest Plan for the above Compartment. I have been briefed on the conditions of the Plan and the progress of the operation. I understand the requirements for supervision and operational control, as explained to me by the current SUPERVISING FOREST OFFICER.

Signature: _____

Date: _____

Position: Incoming Supervising Forest Officer

Signature: _____

Date: _____

Position: Incoming Supervising Forest Officer

Signature: _____

Date: _____

Position: Incoming Supervising Forest Officer

Signature: _____

Date: _____

Position: Incoming Supervising Forest Officer

Signature: _____

Date: _____

Position: Incoming Supervising Forest Officer

Signature: _____

Date: _____

Position: Incoming Supervising Forest Officer

- [illegible]

Supervising Forest Officer's Post-Harvesting Notes

Record significant circumstances about harvesting this area. Draw or attach an annotated operational scale map.

ACTUAL AREA HARVESTED (by silvicultural treatment)

Treatment	code on map	Area (ha) treated	REGEN QUALITY			REGEN DENSITY			COMMENTS
			Good	Fair	Poor	Dense	Fair	sparse	
THINNED	T1								
	T2								
RELEASED	R1								
	R2								
SALVAGE	S1								
	S2								
Not Harvested	NH1								
	NN2								
	NH3								

POSSIBLE NEXT HARVEST

C = cypress H = hardwood

Code on map	Comment	Main product type (put C or H in each relevant cell)	Anticipated volume		
			High	Medium	Low
	<input type="checkbox"/> 0 to 5 years to next harvest	High quality large sawlog			
	<input type="checkbox"/> 5 to 10 years to next harvest	High quality small sawlog			
	<input type="checkbox"/> 10 to 20 years to next harvest	Low quality sawlog			
	<input type="checkbox"/> 20 to 30 years to next harvest	Fencing/posts			
	<input type="checkbox"/> 30 plus years to next harvest	Vineyard posts (cypress)			
		Residue			
		Habitat trees / Non-merchantable			

1. Noxious or environmental weed problems; high levels of feral animal use.

.....

.....

2. Sites of soil erosion for attention.

.....

.....

3. Boundary compromised; neighbour issues resulting from logging or haulage.

.....

.....

4. Operation map errors for attention (e.g. forest type; roads) of appropriate staff (e.g. GIS, Planner)

.....

.....

5. Any other comments – SUPERVISING FOREST OFFICER / FA / Forester

.....

.....

RECORD OF BASAL AREA SWEEPS OF ALL RETAINED STEMS - 10cm dbh or larger

Date (and GPS grid ref optional)	Before or after harvest	Category	Component			
			Dom/ Codom't	Other cohort	All red gum	Other species
	<input type="checkbox"/> Before	merchantable				
	OR	pre-merch				
	<input type="checkbox"/> After	non-merch				
		total				
	trees marked for (circle correct one): retention / removal					
	<input type="checkbox"/> Before	merchantable				
	OR	pre-merch				
	<input type="checkbox"/> After	non-merch				
		total				
	trees marked for (circle correct one): retention / removal					
	<input type="checkbox"/> Before	merchantable				
	OR	pre-merch				
	<input type="checkbox"/> After	non-merch				
		total				
	trees marked for (circle correct one): retention / removal					
	<input type="checkbox"/> Before	merchantable				
	OR	pre-merch				
	<input type="checkbox"/> After	non-merch				
		total				
	trees marked for (circle correct one): retention / removal					
	<input type="checkbox"/> Before	merchantable				
	OR	pre-merch				
	<input type="checkbox"/> After	non-merch				
		total				
	trees marked for (circle correct one): retention / removal					
	<input type="checkbox"/> Before	merchantable				
	OR	pre-merch				
	<input type="checkbox"/> After	non-merch				
		total				
	trees marked for (circle correct one): retention / removal					
	<input type="checkbox"/> Before	merchantable				
	OR	pre-merch				
	<input type="checkbox"/> After	non-merch				
		total				
	trees marked for (circle correct one): retention / removal					
	<input type="checkbox"/> Before	merchantable				
	OR	pre-merch				
	<input type="checkbox"/> After	non-merch				
		total				
	trees marked for (circle correct one): retention / removal					

BA is measured at 1.3m above the ground, and does not include stems less than 10cm diameter at that point.

Operational plan distribution and amendment control sheet ('DACS')

Date approved by RM		Plan number	See page header	State Forest or Property/County	See page header
Date PM review is required				Compartment or Parish/Portion or Lot/DP	See page header

Amendment: Normally the supervising Forester would amend the Office, Forester and SFO copies on explaining the amendment to the SFO, and should annotate the Amendment record (Form 11) in them. The SFO (or Forester as applicable) should amend the bush crew copy/copies when explaining it to the bush operators, and should annotate the Amendment record (Form 11) in it/them.

Plan copy	Name of recipient	Delivery to recipient			Amendment affected in plan copies										Plan recall	
		Method H = hand E = email M = mail	Date done	By (initials)	1		2		3		4		5		Date received	Date destroyed
RO					Date done	By (initials)	Date done	By (initials)	Date done	By (initials)	Date done	By (initials)	Date done	By (initials)		
Ops Centre																
Supervising Forester																
SFO																
Bush crew supervisor																
Contractor																
Customer																

CERTIFICATION OF COMPLETION OF THE OPERATION

This checklist is intended to comprise the top page in the planning documentation folder / wallet

Region:	see page header	State Forest OR County/parish	see page header
Management Area:	see page header	Compartment OR Portion, lot/DP, property	see page header

Tick when added to set	Documentation	Comment
1. <input type="checkbox"/>	Data search results – flora and fauna	
2. <input type="checkbox"/>	Data search results – indigenous cultural heritage	
3. <input type="checkbox"/>	Data search results – non-indigenous cultural heritage	
4. <input type="checkbox"/>	Copy (if any) of the flora/fauna survey report(s) (Ecologist retains the original survey data sheets)	
5. <input type="checkbox"/>	Copy (if any) of the indigenous cultural heritage survey report(s) and original data	
6. <input type="checkbox"/>	Copy (if any) of the non-indigenous cultural heritage survey report(s) and original data sheets	
7. <input type="checkbox"/>	Records of consultation with regulators, including specific license, consent, concurrence, etc (eg individual s120 TSL, Native Veg Act consent, concurrence from RLPB)	
8. <input type="checkbox"/>	Records of consultation with lessees and/or permittees	
9. <input type="checkbox"/>	Records of consultation with stakeholders and the community	
10. <input type="checkbox"/>	Copies of notifications sent (eg neighbours, Lands)	
11. <input type="checkbox"/>	Environmental impact assessment	
12. <input type="checkbox"/>	Due diligence checklist (form 10.1)	
13. <input type="checkbox"/>	Quality control checklist (form 10.2)	
14. <input type="checkbox"/>	Operational plan with signed approval pages	
15. <input type="checkbox"/>	The Distribution Control Sheet for the plan	
16. <input type="checkbox"/>	The Amendment Control Sheet for the plan	
17. <input type="checkbox"/>	Copies of all revisions of and amendments to the plan	
18. <input type="checkbox"/>	Supervising Forest Officer's copy of the plan, with diary notes (form 4), incidental records (eg forms 5, 20, 22), briefing records, post-harvest notes (form 6), other notes/annotations	
19. <input type="checkbox"/>	Completed clearance certificate (form 7) – only harvesting	

I certify that:

- ☐ This file contains all documents associated with planning, implementation and recording for this operation as identified in the table above and is complete for internal/external audit purposes;
- ☐ The relevant information from them has been transferred to the compartment history data set; *and*
- ☐ The Region's geodatabase has been updated for the area completed in this operation.

Position	Signature	Date
Comment		