

NO ENTRY

FORESTRY REGULATION 2022 – SECTIONs 6 & 7

CLOSURE OF PART TAMBAN STATE FOREST

FORESTRY CORPORATION OF NEW SOUTH WALES HAS RESERVED THE AREA DESCRIBED BELOW AS 'THE CLOSED AREA' FOR THE EXCLUSIVE USE OF ITS CONTRACTORS, SUPPORT AND SUPERVISING STAFF CARRYING OUT HARVESTING OPERATIONS DURING THE PERIOD DESCRIBED BELOW AS 'THE CLOSURE PERIOD'.

THE ENTRY OF ALL PERSONS INTO THE CLOSED AREA DURING THE CLOSURE PERIOD, OTHER THAN PERSONS AUTHORISED IN WRITING BY THE FORESTRY CORPORATION OF NEW SOUTH WALES, IS HEREBY PROHIBITED. PERSONS ENTERING INTO OR REMAINING IN THE CLOSED AREA DURING THE CLOSURE PERIOD WITHOUT FORESTRY CORPORATION OF NEW SOUTH WALES' PERMISSION ARE LIABLE TO PROSECUTION, MAXIMUM PENALTY \$2,200 PER OFFENCE.

DESCRIPTION OF THE CLOSED AREA

That part of Tamban State Forest No. 526 enclosed by the boundary:

- A. commencing at the intersection of Range Road and Double Gully Road (marked Point 'A' on the map); then, in a clockwise direction around the Closed Area,
- B. generally, in an easterly direction along Double Gully Road to the intersection of the Tamban State Forest boundary and Private Property boundary (marked point 'B' on the map); then,
- C. in a generally southerly then westerly direction along the Tamban State Forest and Private Property boundary to the intersection with Johnsons Creek Road (marked Point 'C' on the map); then,
- D. in a generally northerly direction along Johnsons Creek Road to the intersection with the Tamban State Forest boundary and Private Property boundary (marked Point 'D' on the map);

then, in a northerly direction along the Tamban State Forest boundary and Private Property boundary back to the intersection of Range Road and Double Gully Road (marked Point 'A' on the map).

To be clear, within the closed area, Range Road, Cooks Lane and Double Gully Road is closed to all but authorised through vehicle traffic. Vehicles must not stop or linger along these sections of the three roads (as mapped) due to safety risks arising from forest operations.

DESCRIPTION OF THE CLOSURE PERIOD

Between 7:00 am Tuesday 28th November 2024 and 7:00 am Monday 3rd of February 2025.

BY ORDER OF FORESTRY CORPORATION OF NEW SOUTH WALES, by its delegate:



Dean Caton

REGIONAL MANAGER NORTHERN, HARDWOOD FORESTS DIVISION

N
Scale 1:24,000
Datum: GDA94

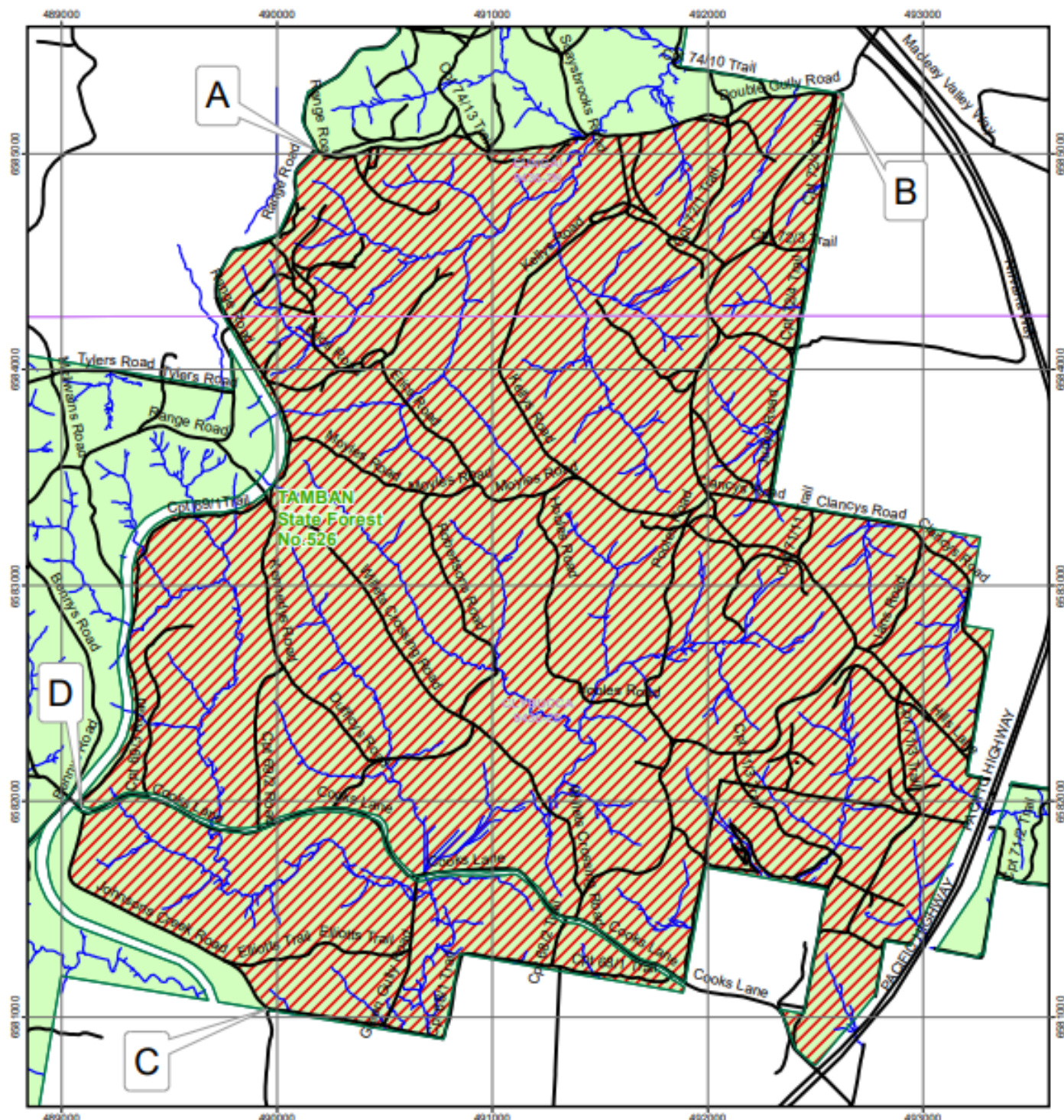
CLOSED AREA

FORESTRY REGULATION 2022 SECTIONS 6 & 7




TAMBAN STATE FOREST NO.526



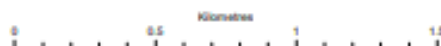
Map Sheets:
1:25,000 ELUNGA 9436-2N;
CLYBUCCA 9436-2S
1:100,000 MACKSVILLE 9436



Legend

-  Closed Area
-  Drainage
-  State Forest
-  Roads

This map is indicative only.
See supporting document with
description of exclusion area boundaries



© Crown Copyright 2013. The information and data contained in this map is to the best of Forestry Corporation's belief, true and correct at the time of publication. However, changes in circumstances after the publication may impact upon the accuracy of the material. No warranty or guarantee is provided by the State of New South Wales, Forestry Corporation and its employees and agents and no liability is accepted for any loss or damage, costs or expense resulting from the use or reliance upon the information and data contained in this map.