

LOCALITY MAP  
Western Branch - Harvest Plan



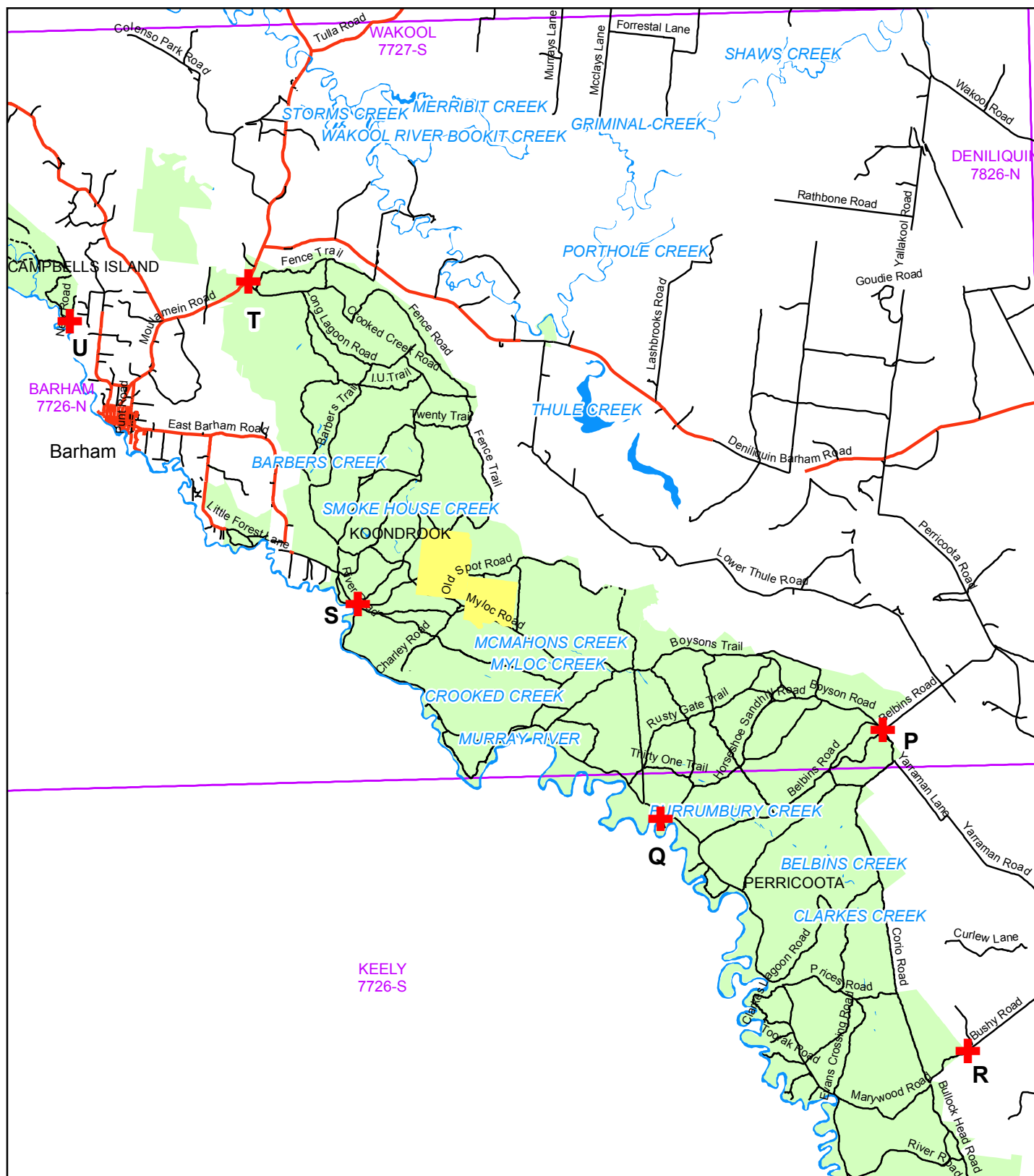
Management Area: Murray

State Forest Name: Koondrook

State Forest No: 625

Compartment: 12, 18

Scale: 1:200,000



- Highway
- Roads
- Major Drainage
- Compartment(s) of interest
- State Forest
- Locality
- + Evacuation Points
- NSWTopo

# OPERATIONAL MAP WESTERN REGION - SAW LOG HARVEST PLAN



State Forest Name: KOONDROOK

State Forest No: 625

Management Area: MURRAY

Compartment: 18,12

Compartment Area: 750.05 ha

NHA: <General Text>

Scale: 1:25,000

Date: \_\_\_\_\_

Amendment 1. Approved: (Regional Manager) \_\_\_\_\_

## Harvest Area

- Red Gum SQ1
- Red Gum SQ2
- Red Gum SQ3
- Red Gum/Box

## Water Features

- Drainage
- Water Bodies
- Areas projected to be wetter

## Boundaries

- Compartment of Interest
- State Forest Boundary
- NPWS
- NSW Topo

## Modified Harvest Area

- Special Prescription (FMZ 3B)
- Habitat Corridor/Buffer (Zone 3B 30m)
- Potential buffer to assess

## Non-Harvest Area

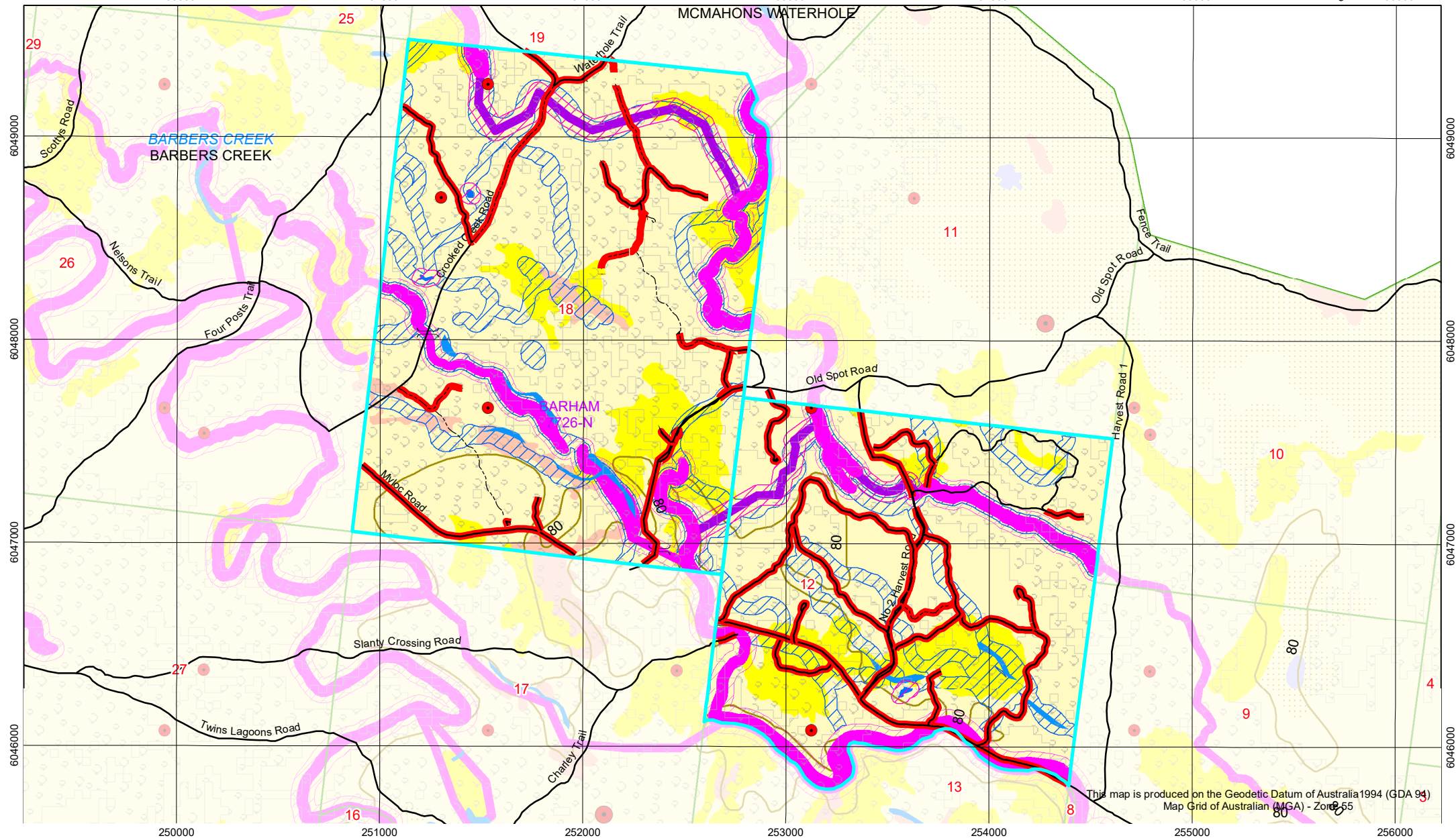
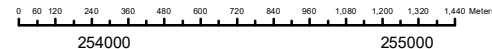
- Special Protection (FMZ 1)
- Special Management (FMZ 2)
- Harvesting Exclusion
- Box
- Open Plain or Swamp
- Linkage Protection Zone

## Harvest Roads

- Operation
- Proposed

## General Features

- Glider Sap Feed Tree
- Inventory/Research Plots
- Log Dump (permanent)
- Log Dump (temporary)
- Trig/Repeater Station
- Heritage Points
- Aboriginal Points
- Contour
- Roads
  - Highway
  - Road
  - Crossing



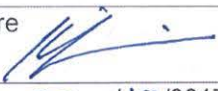
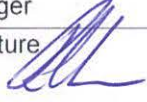
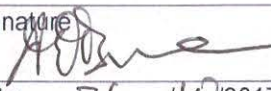


**FORESTRY CORPORATION OF NSW - WESTERN REGION**
**NATIVE FOREST HARVESTING PLAN WRhfrt1202**

Refer: FPC 2010/01

**Koondrook State Forest - Compartment 12, 18**
**Certification**

This plan has been prepared in accordance with the Integrated Forestry Operations Approval issued under the Forestry and National Park Estate Act 1998. The Standard Harvest Plan Conditions for Native Forest Operations in Western Region – Riverina Red Gum apply to this operation.

|   |   |   |
|---|---|---|
| Prepared by: Kelly Williamson   | Endorsed by: Ross Irvine  | Approved by: Andrew O'Brien   |
| Assistant District Manager  | Environment & Resources Manager   | Senior Manager  |
| Signature  | Signature  | Signature  |
| Date 22 /10/2017  | Date 26/10 / /2017  | Date 26 /10/2017  |

Note: Approval includes the Harvest Plan Operational Map (HPOM) with the corresponding approval date displayed on the map, verifying final approved version. Locality and forest type maps are included for information only and do not form a part of this approval.

**PRE-OPERATIONAL BRIEFING (SUPERVISING FOREST OFFICER ACKNOWLEDGMENT)**

I confirm that I have received a copy of the Harvest Plan for the above Compartment. I have been briefed on the conditions of the Plan. I understand the requirements for supervision and operational control as explained to me by the Forest Manager or his/her delegate.

SUPERVISING FOREST OFFICER: \_\_\_\_\_

Signature: \_\_\_\_\_ Date: \_\_\_\_\_

**PRE-OPERATIONAL BRIEFING (LICENSEE/CONTRACTOR ACKNOWLEDGMENT)**

I confirm that I have received a copy of this Harvest Plan and that:

- ☐ I understand the conditions of the Plan,
- ☐ I will inform all relevant people not present at this briefing, prior to them starting operations, of these aspects of the Plan, as explained to me by a Forestry Corporation officer.

Signature: \_\_\_\_\_ Name: \_\_\_\_\_ Date: \_\_\_\_\_

Position: \_\_\_\_\_ Licence No: \_\_\_\_\_

Principal licensee/contractor/other (explain)

## Description of Proposal

High Quality Large sawlogs and green and dry residue logs will be harvested under regulation of the Integrated Forest Operations Approval for Riverina Red Gum (RRG IFOA).

The operation will use mainly mechanical harvesting and processing to produce logs and forward them to dumps. The logs will be removed from the forest by truck.

Natural regeneration is planned. No after-harvest burning or planting is proposed.

Attachment 1: Site Safety Plan prescribes the safety requirements and Medical Emergency Evacuation Plan for this harvesting operation.

No construction, reopening or upgrading of roads or bush tracks is proposed. Prescriptions for maintenance of existing roads and tracks are specified below.

## Area Identification and Yield Estimates

| State Forest | Compartment/s | Region  | Management Area | Harvest Plan ID |
|--------------|---------------|---------|-----------------|-----------------|
| Koondrook    | 12, 18        | Western | Murray          | 63796           |

| COMPARTMENT                                  | 12     | 18     | Total |
|--|--------|--------|-------|
| Plan Cpt ID                                  | 133208 | 133209 | -     |
| Gross Area (ha)                              | 300    | 448    | 748   |
| Net Harvest Area (ha)                        | 274    | 401    | 675   |
| Estimated Yield HQL Sawlog (m <sup>3</sup> ) | 1130   | 1690   | 2820  |
| Estimated Yield LQL Sawlog (m <sup>3</sup> ) | 1320   | 1980   | 3300  |
| Estimated Yield Residue (t)                  | 16960  | 25440  | 42400 |

## Silviculture and Harvesting Prescriptions

The compartments adjoin each other in the Koondrook State Forest along the Myloc Creek.

Areas close to the Myloc and McMahons Creeks contain good stands of Site Quality 1 Red gum, with the remainder and majority being Site quality 2 of varying age classes. The compartments are within the flood zone for both small and large flood events, therefore there are cohorts of regeneration from multiple flood events across the area, with the best of these closer to and within the intricate network of small drainage features, some of which will require exclusion or buffereing, as per the Harvest Plan Operational Map (HPOM).

Intensive Utilisation was used through the compartments in the 1950's and 1960's. Compartment 18 was last selectively harvested in the early 2000's. Early thinning trials were conducted in compartment 18, and now the treatment is required to be applied across the whole compartment area. Quality of the stands changes between realtively small changes in height and water availability, resulting in a range of silviculture that will now be applied; Early Thinning, Early Thinning in poor stands, Thinning, Single Tree Selection – Release and Australian Gap Selection (AGS).

The area of each silvicultural treatment must be mapped and recorded in the Post-logging information section of this plan.

### Silvicultural Planning

Thinning prescriptions will be used to reduce the stocking of densely stocked younger trees to ensure a remaining average Basal Area across the harvested area of at least 12 square metres per hectare. Where the diameter of the dominants and co-dominants is less than 50cm (early thinning) in a patch size adequate for two weeks work, the SFO and the contractor must ensure the quantities of residue log harvested from these areas are debited to the early thinnings cap. Thinning will cut from below, leaving healthy growing stock with an adequate spacing to develop into a healthy stand. Returning to these patches in 15-20 years time to undertake logging using thinning prescriptions to produce quota quality sawlogs, ex-quota sawlogs and residue will be the intention, and in 30-40 years time Single Tree Selection (STS) and Australian Group Selection (AGS) prescriptions would be used to regenerate these areas.

STS Release will be carried out to remove poor quality mature trees and overmature trees that are dominating the overstorey, taking away the impediment of competition.

AGS will be applied in 'Areas projected to be wetter' parts of the compartment where there is clumping of the older cohort, to create space and resources for a regeneration event. AGS gaps will be no larger than 0.5 ha in size. The "Areas projected to be wetter" zone where this treatment is available is shown on the HPOM. The SFO is to record the boundary of AGS tracts (stands containing AGS), and GPS locations of all gaps. Thinning will be applied between gaps within the AGS tract.

### Harvesting Prescription

The following table shows estimated silviculture treatments areas for the planned compartments

| Stand type                     | % of net area | Area (refer to HPOM for details) | Treatment<br>Refer to <i>Standard Harvest Plan Conditions for Native Forest Operations in Western Region. – Riverina Red Gum</i> for more detail. |
|--------------------------------|---------------|----------------------------------|---|
| Densely stocked younger cohort | 60            | Spread across NHA                | <ul style="list-style-type: none"> <li>Early thinning, Thinning</li> </ul>  |
| Mature and over mature cohort  | 40            | Spread across NHA                | <ul style="list-style-type: none"> <li>STS Release, STS Regeneration, AGS</li> </ul>  |

The SFO will ensure that all relevant tree retention and silvicultural prescriptions are met during harvesting operations.

The operation must, as far as practicable, not damage individual plants of good form regeneration or sapling size red gum, especially where there are few others nearby.

### Tree Marking

Unless noted by the SFO in the SFO Notes section of this harvest plan, most of the harvest area will be tree marked for **retention**. The operation must, as far as practicable:

- For the allowed species, fall each tree not marked for retention, unless it clearly does not meet the product standard, or in the case of operator selection follow the SFO direction for further tree selection, and

- Not fall or damage trees marked for retention, or marked as boundary trees.

The SFO may revert to marking for **removal** in sparse areas where fewer trees will be removed, these areas will be communicated to the operators. The operation must, as far as practicable:

- For the allowed species, fall each tree marked for removal, unless it clearly does not meet the product standard, *AND*
- Not fall or damage trees not marked for removal. Also must not damage those marked as boundary trees.

Any change in marking technique must be noted in the SFO Notes and these areas annotated on the Operational Map. Boundaries between the different marking strategies must be clearly defined in the field, with the harvest contractors advised of the change in marking strategy.

## Special Conditions

### Critical boundaries

Most parts of the boundaries are shared by other compartments will be marked, except for the southern edge of compartment 12 which is bounded by the Myloc Creek.

### Research / Inventory Plots

There are 5 inventory plots within the planning area. All of these have been recently measured, and so now are to have normal silviculture applied and be harvested.

### Leases/OPs

The area is or may be subject to grazing under Grazing Permit. In particular:

- Fences. No fence may be damaged except at places approved by the Supervising Forest Officer. Any damage to a fence by the Contractor must be immediately reported to the Supervising Forest Officer and fixed immediately by the Contractor.
- Roads. Existing roads must not be blocked or damaged. Any damage must be repaired immediately.
- Apiary sites: A 20m buffer must be applied around each bee hive encountered.

## Forest Management Zoning Conditions

### FMZ 3A Harvest Exclusion

20m harvest exclusions in the form of Drainage Feature Protection Zones are present along the Myloc Creek, McMahons Creek and Smoke House Creek, as per the HPOM.

Also within the compartments are 3 Linkage Protection Zones (also FMZ 3A), of 40m total width, these are shown on the map as purple, and join Smoke House Creek to McMahons Creek, Myloc Creek to McMahons Creek, and between two parts of McMahons Creek. These are to be applied as per the feature on the ground, where no feature exists, they are to be applied as mapped.

### FMZ 3B Special Prescription – Buffer strips

A 30m Buffer strip is to be applied on the outside of the Drainage Feature Protection ones and the Linkage Protection Zones, under the prescriptions listed in section 3.3 of Standards Harvest Plan Condition of Native Forest Operations in Western Region – Riverina Red Gum. Buffer strips are also applied to mapped and unmapped drainage lines and wetlands that meet the requirements under the IFOA.



Area typed as Open Plain/Swamp or Box but not mapped with an exclusion is not to be harvested, the boundary of which applied as the forest type appears on the ground. The remaining area of the compartment is General Management Zone 4, with mapped drainage lines that need assessment for application of buffers in the field where they meet the IFOA criteria as described in this harvest plan.

### **Cultural Heritage Conditions**

There are a number of Aboriginal Cultural heritage sites recorded within the two compartments. These points are to be referenced from the FC Map Ap tile package, and the exclusions applied as below.

Other sites may be present in the compartment area.

- During pre-harvesting mark up, the SFO must search for sites or artefacts of cultural heritage.
- The harvesting licensee/contractor must inform the SFO of the location of all cultural heritage sites detected during the operation and must not disturb them.

The SFO must record the location of all new cultural heritage sites on the Operational Map, and report to the Supervising Forester.

- An exclusion zone around an Aboriginal scar tree must be a minimum of 20 metres wide.
- An exclusion zone around a midden or artefact must be a minimum of 10 metres wide.
- Harvesting machinery must not operate on sandhills.

### **Flora and Fauna Conditions**

The SFO must search for threatened species and mark-up the block as per the Standard Harvest Plan Conditions for Native Forest Operations in Western Region. – Riverina Red Gum.

#### **Mark-up Conditions**

Refer to Standard Harvest Plan Conditions for Native Forest Operations in Western Region. – Riverina Red Gum for prescriptions.

#### **Tree retention Conditions**

Refer to Standard Harvest Plan Conditions for Native Forest Operations in Western Region. – Riverina Red Gum for prescriptions.

### **Site-Specific Conditions, Exclusion Zones & Modified Harvest Areas**

There are no known areas of endangered ecological community (EEC) occurring within the net operational area that need additional harvest exclusions or modified harvesting zones implemented.

Contractors and the SFO must also immediately report any sightings of the following to the Supervising Forester and to apply the appropriate protection level.

- Silver wattle
- Native cherry
- Yellow gum
- Endangered Ecological Communities

Refer to Standard Harvest Plan Conditions for Native Forest Operations in Western Region. – Riverina Red Gum for prescriptions.

### Species Known or Likely to Occur

There are no known records of Threatened fauna, flora or habitat features present within the planning area that require prescriptions within this plan.

Contractors and supervisory staff must immediately report any sightings of Schedule 1 and 2 species to the Supervising Forester. The Harvesting Plan must then be amended to include additional prescriptions if necessary.

The species and habitat features that could possibly occur in the Koondrook State Forest area are listed in the table below. If species or habitat features are recorded within the compartment or nearby the mark up and harvesting operations, the associated species protection zones are to be implemented.

| Threatened species and habitat feature                        | IFOA Clause           | Site-specific prescription / Buffer radius      |
|---|-----------------------|---|
| Superb parrot nest  | 198                   | 100m  |
| Regent parrot nest  | 198                   | 100m  |
| Square-tailed kite nest or roost                              | 198                   | 200m  |
| Little eagle nest or roost                                    | 198                   | 200m  |
| Any threatened owl nest or roost                              | 198                   | 200m  |
| Spotted harrier nest or roost                                 | 198                   | 200m  |
| Bush stone curlew nest  | 198                   | 100m  |
| Gilbert's Whistler nest                                       | 198                   | 20m   |
| Dusky Woodswallow nest  | EPA advice<br>4/10/17 | 100m  |
| Gilbert's Whistler record                                     | 210                   | 300m no 'dry' residue harvest                   |
| Microchiropteran bat roost tree                               | 199                   | 30m   |
| Koala in tree   | 200 (1,c)             | 30m   |
| Koala high-use area   | 200 (1,b)             | 100m  |
| Koala scat tree   | 183                   | Do not fall the tree                            |
| Glider sap feed tree  | 181                   | Do not fall the tree                            |
| Raptor nest tree  | 182                   | Do not fall the tree                            |
| Nests (other than mud nests) of any species of protected bird | 185 (2)               | Do not fall tree, avoid damage to nest and tree |



### Fisheries Licence Conditions

Applicable Fisheries Licence conditions are detailed in the Riverina Red Gum IFOA. Refer to Standard Harvest Plan Conditions for Native Forest Operations in Western Region. – Riverina Red Gum for prescriptions.

### Soil and Water Protection Conditions

Applicable Environmental Protection Licence conditions are detailed in the Riverina Red Gum IFOA. Refer to Standard Harvest Plan Conditions for Native Forest Operations in Western Region. – Riverina Red Gum for prescriptions.

Site-specific EPL conditions – The following features occur within the planned area. Refer to operational map for more detail.

| Elements  | Conditions   |
|---|--|
| Myloc Creek, McMahon's Creek, Smoke House Creek                                     | 20m Feature Protection Zone plus 30 m Buffer strip |
| Linkage Protection Zones  | 40m total Exclusion Zone plus 30m Buffer strip     |
| Mapped or unmapped drainage depression or wetland depression (>400 m <sup>2</sup> ) | 30 m Buffer strip                                  |

A drainage depression constitutes any channel where natural surface water concentrates and flows, averages 5m width or greater, 0.5m deep and 500m in length, and does not contain any live trees greater than 150mm dbhob within its banks.

A wetland depression constitutes any visible (average 0.5m deep at at least one point compared to general ground level) shallow, open depression of at least 400m<sup>2</sup> where there are no live trees over 150mm dbhob. They may or may not be connected to other drainage features or fed by a seasonal, permanent or intermittent water table at or slightly above the floor of the depression.

It is the responsibility of the SFO to identify any exclusion areas which will need to be crossed during harvesting. The SFO should then contact the Assistant District Manager to obtain the necessary approval. No crossings exist at present.

### Road Works Conditions

Only existing roads and causeways will be used during operations and maintained for wear and tear. Any new proposed road, bush track or up-grade works necessary during the life of the operations will need to be approved by the Senior Manager via a HPOM amendment prior to their construction.

### Legal Conditions

This operation may only proceed while this operational plan, the relevant site safety plan and the Standard Harvest Plan Conditions for Native Forest Operations in Western Region. – Riverina Red Gum are held on site.

This operation must comply with the following:

- ☐ Standard Harvest Plan Conditions for Native Forest Operations in Western Region. – Riverina Red Gum
- ☐ Licence conditions issued by Forestry Corporation of NSW under the Forestry Act (2012).
- ☐ Forest Practices Code, Part 2, Timber Harvesting In Native Forests (4<sup>th</sup> edition 1999).
- ☐ Forest Practices Code, Part 4, Forest Roads and Fire Trails (1999).
- ☐ Integrated Forestry Operations Approval issued under Part 4 of the Forestry and National Parks Estate Act 1998 (IFOA) as amended June 2016 including associated licences:
  - Threatened Species Conservation Licence (TSCL) issued under the Threatened Species Conservation Act 1995
  - Fisheries Management Licence issued under Part 7 (Div 3) Fisheries Management Act 1994
  - Environmental Protection Licence (EPL) issued under the Protection of the Environment Operations Act 1997.

Date of cessation of logging: \_\_\_\_\_

## DUMP USAGE RECORD

- Record the commencement and completion of harvesting at each dump

[illegible]





\_\_\_\_\_

### Certificate Of Clearance To Move From Current Compartment(s)

To: \_\_\_\_\_, Supervising Forest Officer.

I **request** approval to move my logging crew and all associated machinery from Compartment(s) \_\_\_\_\_ in \_\_\_\_\_ State Forest to the next area in accordance with Section 5.5 of the Forest Practices Code Part 2 Timber Harvesting In Native Forests.

I **certify** that:

- ☐ all permanent roads, trails and mitre drains have been cleared of harvesting debris;
- ☐ butt damage to retained trees has been kept to acceptable limits;
- ☐ all trees marked for removal have been felled;
- ☐ utilisation limits have been satisfactorily met;
- ☐ stump heights conform to requirements;
- ☐ all hanging trees have been brought down;
- ☐ all log dump sites have been satisfactorily restored as required;
- ☐ harvesting debris is not accumulated around retained trees;
- ☐ all accumulated litter has been disposed of properly;
- ☐ all modified harvesting conditions have been complied with;
- ☐ all snig track and road drainage has been installed satisfactorily and other required rehabilitation work has been completed;
- ☐ all necessary repairs to damaged roads, signs, fences and other structures have been carried out.
- ☐ all machinery has been washed down (if required) to prevent the spread of noxious weeds or pests.

I **believe** that I have met all my obligations under the conditions of the Timber Licence that applies to the area just completed and any N&PW Act Licence that applies to the area just completed, as stated in this Harvest Plan.

\_\_\_\_\_  
Signature

\_\_\_\_\_  
Contractor/Licence No:

\_\_\_\_\_  
Date

As a result of inspections of the logging operations carried out in accordance with this Harvest Plan, I am satisfied that, to the best of my knowledge, the harvesting licensee/contractor responsible for this harvesting operation has satisfactorily completed all work. Approval is given for her/him to remove her/his machinery and equipment and leave the area/commence operations in another harvesting plan area, being:

Compartment(s): \_\_\_\_\_, in \_\_\_\_\_ State Forest.

This clearance does not release the licensee/contractor from any obligation to undertake any remedial work if deficiencies, found during any inspections of the area made within 12 months of the date of this post-harvesting inspection, are shown to have resulted from inadequate practices during the harvesting operation.

Date of last inspection of the area by the Supervising Forest Officer: \_\_\_\_\_

Supervising Forest Officer \_\_\_\_\_

date: \_\_\_\_\_

\_\_\_\_\_  
Signature

\_\_\_\_\_  
Name

## HARVEST PLAN AMENDMENT RECORD

|  |  |  |
|--|--|--|
|  |  |  |
|--|--|--|

| Amendment No. & type |       |       | Date Prepared | Amendment Details | All Copies Amended | Signature |
|----------------------|-------|-------|---------------|-------------------|--------------------|-----------|
| Number               | Major | Minor |               |                   |                    |           |
| 1                    |       |       |               |                   |                    |           |
| 2                    |       |       |               |                   |                    |           |
| 3                    |       |       |               |                   |                    |           |
| 4                    |       |       |               |                   |                    |           |
| 5                    |       |       |               |                   |                    |           |
| 6                    |       |       |               |                   |                    |           |
| 7                    |       |       |               |                   |                    |           |
| 8                    |       |       |               |                   |                    |           |
| 9                    |       |       |               |                   |                    |           |
| 10                   |       |       |               |                   |                    |           |
| 11                   |       |       |               |                   |                    |           |
| 12                   |       |       |               |                   |                    |           |

**Note:** The purpose of this log is to track amendments to the Harvest Plan from time of first approval. All maps, Harvest Plans etc. are to be clearly identified with a version # and date so that changes to the Plan may be clearly identifiable. The Harvest Planner is responsible for ensuring all amendments are implemented, recorded and filed

### Supervising Forest Officer's Hand-Over Acknowledgment

I confirm that I have received a copy of the Harvest Plan for the above Compartment. I have been briefed on the conditions of the Plan and the progress of the operation. I understand the requirements for supervision and operational control, as explained to me by the current SUPERVISING FOREST OFFICER.

Signature: \_\_\_\_\_  
Position: Incoming Supervising Forest Officer

Date: \_\_\_\_\_

Signature: \_\_\_\_\_  
Position: Incoming Supervising Forest Officer

Date: \_\_\_\_\_

Signature: \_\_\_\_\_  
Position: Incoming Supervising Forest Officer

Date: \_\_\_\_\_

Signature: \_\_\_\_\_  
Position: Incoming Supervising Forest Officer

Date: \_\_\_\_\_

Signature: \_\_\_\_\_  
Position: Incoming Supervising Forest Officer

Date: \_\_\_\_\_

Signature: \_\_\_\_\_  
Position: Incoming Supervising Forest Officer

Date: \_\_\_\_\_

### RECORD OF INCIDENTAL THREATENED PLANT OR THREATENED FAUNA FEATURE SIGHTING





**ACTUAL AREA HARVESTED** (by silvicultural treatment)

| Treatment     | code on map | Area (ha) treated | REGEN QUALITY |      |      | REGEN DENSITY |      |        | COMMENTS |
|---------------|-------------|-------------------|---------------|------|------|---------------|------|--------|----------|
|               |             |                   | Good          | Fair | Poor | Dense         | Fair | sparse |          |
| THINNED       | T1          |                   |               |      |      |               |      |        |          |
|               | T2          |                   |               |      |      |               |      |        |          |
| RELEASED      | R1          |                   |               |      |      |               |      |        |          |
|               | R2          |                   |               |      |      |               |      |        |          |
| SALVAGE       | S1          |                   |               |      |      |               |      |        |          |
|               | S2          |                   |               |      |      |               |      |        |          |
| Not Harvested | NH1         |                   |               |      |      |               |      |        |          |
|               | NN2         |                   |               |      |      |               |      |        |          |
|               | NH3         |                   |               |      |      |               |      |        |          |

**POSSIBLE NEXT HARVEST**

C = cypress    H = hardwood

|             |   | Main product type<br>(put C or H in each relevant cell) | Anticipated volume |        |     |
|-------------|---|---|--------------------|--------|-----|
|             |   |   | High               | Medium | Low |
| Code on map | Comment   | High quality large sawlog                               |                    |        |     |
|             |   | High quality small sawlog                               |                    |        |     |
|             |   | Low quality sawlog                                      |                    |        |     |
|             |   | Fencing/posts   |                    |        |     |
|             |   | Vineyard posts (cypress)                                |                    |        |     |
|             |   | Residue   |                    |        |     |
|             |   | Habitat trees / Non-merchantable                        |                    |        |     |
|             | <input type="checkbox"/> 0 to 5 years to next harvest   |   |                    |        |     |
|             | <input type="checkbox"/> 5 to 10 years to next harvest  |   |                    |        |     |
|             | <input type="checkbox"/> 10 to 20 years to next harvest |   |                    |        |     |
|             | <input type="checkbox"/> 20 to 30 years to next harvest |   |                    |        |     |
|             | <input type="checkbox"/> 30 plus years to next harvest  |   |                    |        |     |

1. Noxious or environmental weed problems; high levels of feral animal use.

.....

.....

2. Sites of soil erosion for attention.

.....

3. Boundary compromised; neighbour issues resulting from logging or haulage.

.....

.....

4. Operation map errors for attention (e.g. forest type; roads) of appropriate staff (e.g. GIS, Planner)

.....

.....

5. Any other comments – SUPERVISING FOREST OFFICER / FA / Forester

.....

.....

**RECORD OF BASAL AREA SWEEPS OF ALL RETAINED STEMS - 10cm dbh or larger**

| Date | GPS Location/cpt | Before or after<br>harvest  | BA of retained trees | Factor used |
|------|------------------|---|----------------------|-------------|
|      |                  | <input type="checkbox"/> Before<br>OR<br><input type="checkbox"/> After |                      |             |
|      |                  | <input type="checkbox"/> Before<br>OR<br><input type="checkbox"/> After |                      |             |
|      |                  | <input type="checkbox"/> Before<br>OR<br><input type="checkbox"/> After |                      |             |
|      |                  | <input type="checkbox"/> Before<br>OR<br><input type="checkbox"/> After |                      |             |
|      |                  | <input type="checkbox"/> Before<br>OR<br><input type="checkbox"/> After |                      |             |
|      |                  | <input type="checkbox"/> Before<br>OR<br><input type="checkbox"/> After |                      |             |
|      |                  | <input type="checkbox"/> Before<br>OR<br><input type="checkbox"/> After |                      |             |
|      |                  | <input type="checkbox"/> Before<br>OR<br><input type="checkbox"/> After |                      |             |
|      |                  | <input type="checkbox"/> Before<br>OR<br><input type="checkbox"/> After |                      |             |
|      |                  | <input type="checkbox"/> Before<br>OR<br><input type="checkbox"/> After |                      |             |
|      |                  | <input type="checkbox"/> Before<br>OR<br><input type="checkbox"/> After |                      |             |
|      |                  | <input type="checkbox"/> Before<br>OR<br><input type="checkbox"/> After |                      |             |
|      |                  | <input type="checkbox"/> Before<br>OR<br><input type="checkbox"/> After |                      |             |
|      |                  | <input type="checkbox"/> Before<br>OR<br><input type="checkbox"/> After |                      |             |
|      |                  | <input type="checkbox"/> Before<br>OR<br><input type="checkbox"/> After |                      |             |
|      |                  | <input type="checkbox"/> Before<br>OR<br><input type="checkbox"/> After |                      |             |
|      |                  | <input type="checkbox"/> Before<br>OR<br><input type="checkbox"/> After |                      |             |
|      |                  | <input type="checkbox"/> Before<br>OR<br><input type="checkbox"/> After |                      |             |
|      |                  | <input type="checkbox"/> Before<br>OR<br><input type="checkbox"/> After |                      |             |

BA is measured at 1.3m above the ground, and does not include stems less than 10cm diameter at that point.

**Operational plan distribution and amendment control sheet ('DACS')**

|   |  |             |                 |   |                 |
|---|--|-------------|-----------------|---|-----------------|
| Date approved by RM                                     |  | Plan number | See page header | State Forest or Property/County         | See page header |
| Date Environment & Resources Manager review is required |  |             |                 | Compartment or Parish/Portion or Lot/DP | See page header |

**Amendment:** Normally the supervising Forester would amend the Office, Forester and SFO copies on explaining the amendment to the SFO, and should annotate the Amendment record (Form 11) in them. The SFO (or Forester as applicable) should amend the bush crew copy/copies when explaining it to the bush operators, and should annotate the Amendment record (Form 11) in it/them.

| Plan copy            | Name of recipient | Delivery to recipient                       |           |               | Amendment affected in plan copies |               |           |               |           |               |           |               |           |               | Plan recall   |                |
|----------------------|-------------------|---|-----------|---------------|-----------------------------------|---------------|-----------|---------------|-----------|---------------|-----------|---------------|-----------|---------------|---------------|----------------|
|                      |                   | Method<br>H = hand<br>E = email<br>M = mail | Date done | By (initials) | 1                                 |               | 2         |               | 3         |               | 4         |               | 5         |               | Date received | Date destroyed |
|                      |                   |   |           |               | Date done                         | By (initials) | Date done | By (initials) | Date done | By (initials) | Date done | By (initials) | Date done | By (initials) |               |                |
| RO                   |                   |   |           |               |                                   |               |           |               |           |               |           |               |           |               |               |                |
| Ops Centre           |                   |   |           |               |                                   |               |           |               |           |               |           |               |           |               |               |                |
| Supervising Forester |                   |   |           |               |                                   |               |           |               |           |               |           |               |           |               |               |                |
| SFO                  |                   |   |           |               |                                   |               |           |               |           |               |           |               |           |               |               |                |
| Bush crew supervisor |                   |   |           |               |                                   |               |           |               |           |               |           |               |           |               |               |                |
| Contractor           |                   |   |           |               |                                   |               |           |               |           |               |           |               |           |               |               |                |
| Customer             |                   |   |           |               |                                   |               |           |               |           |               |           |               |           |               |               |                |
|                      |                   |   |           |               |                                   |               |           |               |           |               |           |               |           |               |               |                |
|                      |                   |   |           |               |                                   |               |           |               |           |               |           |               |           |               |               |                |



**CERTIFICATION OF COMPLETION OF THE OPERATION***This checklist is intended to comprise the top page in the planning documentation folder / wallet*

|                  |                 |                           |                 |
|------------------|-----------------|---------------------------|-----------------|
| Region:          | see page header | State Forest OR           | see page header |
|                  |                 | County/parish             |                 |
| Management Area: | see page header | Compartment OR            | see page header |
|                  |                 | Portion, lot/DP, property |                 |

| Tick when added to set       | Documentation   | Comment |
|------------------------------|---|---------|
| 1. <input type="checkbox"/>  | Data search results – flora and fauna   |         |
| 2. <input type="checkbox"/>  | Data search results – indigenous cultural heritage  |         |
| 3. <input type="checkbox"/>  | Data search results – non-indigenous cultural heritage  |         |
| 4. <input type="checkbox"/>  | Copy (if any) of the flora/fauna survey report(s) (Ecologist retains the original survey data sheets)   |         |
| 5. <input type="checkbox"/>  | Copy (if any) of the indigenous cultural heritage survey report(s) and original data  |         |
| 6. <input type="checkbox"/>  | Copy (if any) of the non-indigenous cultural heritage survey report(s) and original data sheets   |         |
| 7. <input type="checkbox"/>  | Records of consultation with regulators, including specific license, consent, concurrence, etc (eg individual s120 TSL, Native Veg Act consent, concurrence from RLPB)                    |         |
| 8. <input type="checkbox"/>  | Records of consultation with lessees and/or permittees  |         |
| 9. <input type="checkbox"/>  | Records of consultation with stakeholders and the community   |         |
| 10. <input type="checkbox"/> | Copies of notifications sent (eg neighbours, Lands)   |         |
| 11. <input type="checkbox"/> | Environmental impact assessment   |         |
| 12. <input type="checkbox"/> | Due diligence checklist (form 10.1)   |         |
| 13. <input type="checkbox"/> | Quality control checklist (form 10.2)   |         |
| 14. <input type="checkbox"/> | Operational plan with signed approval pages   |         |
| 15. <input type="checkbox"/> | The Distribution Control Sheet for the plan   |         |
| 16. <input type="checkbox"/> | The Amendment Control Sheet for the plan  |         |
| 17. <input type="checkbox"/> | Copies of all revisions of and amendments to the plan   |         |
| 18. <input type="checkbox"/> | Supervising Forest Officer's copy of the plan, with diary notes (form 4), incidental records (eg forms 5, 20, 22), briefing records, post-harvest notes (form 6), other notes/annotations |         |
| 19. <input type="checkbox"/> | Completed clearance certificate (form 7) – only harvesting  |         |

**I certify that:**

- ☐ This file contains all documents associated with planning, implementation and recording for this operation as identified in the table above and is complete for internal/external audit purposes;
- ☐ The relevant information from them has been transferred to the compartment history data set; *and*
- ☐ The Region's geodatabase has been updated for the area completed in this operation.

|          |           |      |
|----------|-----------|------|
| Position | Signature | Date |
| Comment  |           |      |

### PHOTO STANDARD FOR WOODY DEBRIS

(The density and nature of on-ground residue must, at a minimum, resemble these photos after harvesting is complete).

