

N Scale: 1:15,000
Datum: GDA94
Projection: MGA
Map Sheets: Wootton 9333-2-N
Contour Interval: 10 m

Harvest Plan Operational Map

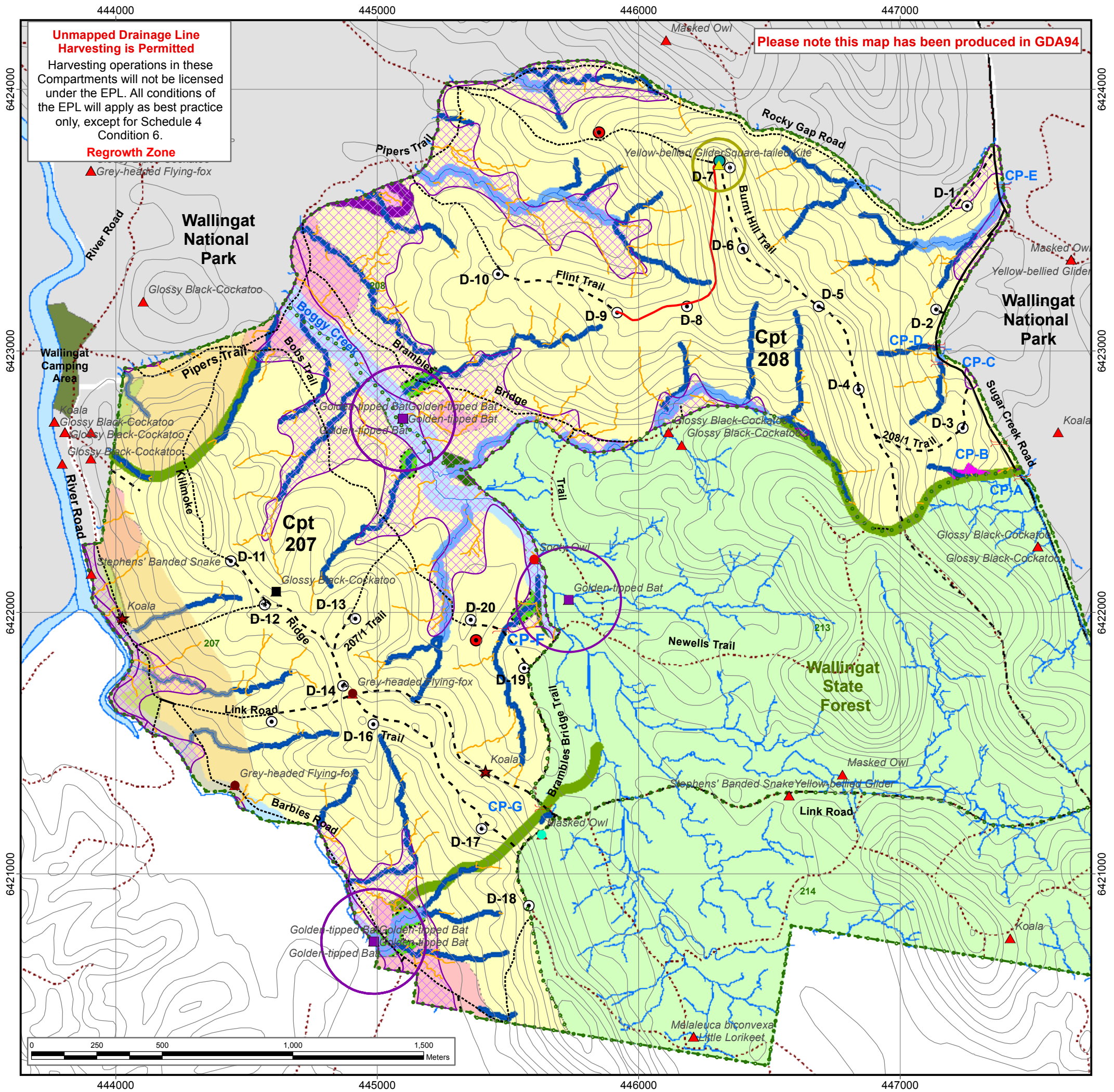
Compartments 207 & 208

Wallingat State Forest

Central Region - Bulahdelah Management Area

RM Approval Date:
Road Plan - 25/06/2012
Harvest Plan - 11/7/2012
Controlled Map: 207_208_Wallingat_
Ops_Map_A3P.pdf

Prepared by: Paul Williams
Date: 25/06/2012



MAP FEATURES

- State Forest Boundary
- Compartments Boundary
- 1 Km Grid
- 10m Contour
- Approved Crossing
- Growth Plot
- State Forest
- Private Property
- Wallingat Camping Area

DUMPS

- Temporary Dry

ROADS

- Gravel Road
- Natural Surface Road
- Not to be used for haulage
- New Construction
- Roads outside harvest area

HARVEST AREA & EXCLUSION ZONES

Base Net Area - (IHC 2)

Harvest Area

- General Management (FMZ 4 and 8)

Exclusions

- No Harvest Area
- National Park

4 Bar Exclusions

- Rainforest - Crafti + RN17

3 Bar Limited Felling

- Harvesting Protection (FMZ 2)
- Harvesting Protection (FMZ 3A)
- Ridge & Headwater Habitat (40m exclusion)
- Indicative extent of Endangered Ecological Community (Areas to be field assessed & boundaries marked prior to harvesting)
- High Conservation Old Growth
- Rare & Non Commercial Forest Type

3 Bar, 2 Dot Exclusions

- Golden-tipped bat 30m Exclusion

DRAINAGE FEATURES

Exclusion zones of 30m wide must be implemented on all dams and permanent water bodies

- Uncorrected LIDAR drainage (External to compartments)
- Spatially corrected LIC drainage line (LIDAR) (5m Operational Zone)
- Indicative unmapped drainage feature (LIDAR) (Will be managed under UMDL best management practices)
- 1st Order (Protection 10m)
- 2nd Order (Protection 20m)
- 3rd Order (Protection 30m)
- 4th Order & above (Protection 50m)
- External Compartment Water Bodies

Threatened Species Records

Records requiring prescription

- Glossy Black-Cockatoo Feed Tree
- Square-tailed Kite
- Golden-tipped Bat
- Yellow-bellied Glider Feed tree
- Golden-tipped Bat (Harvest Exclusion 30m each side of all drainage lines within 200m of the record)
- 15 trees retained within 100m of record

Other records of presence

- Koala Record
- Sooty Owl
- Masked Owl
- Grey Headed Flying Fox
- Ecology point site (labelled on map)