

NO ENTRY

FORESTRY REGULATION 2022 - SECTION 6 & 7

CLOSURE OF PART INGALBA CREEK STATE FOREST

FORESTRY CORPORATION OF NEW SOUTH WALES HAS RESERVED THE AREA DESCRIBED BELOW AS 'THE CLOSED AREA' FOR THE EXCLUSIVE USE OF ITS CONTRACTORS, SUPPORT AND SUPERVISING STAFF CARRYING OUT HARVESTING OPERATIONS DURING THE PERIOD DESCRIBED BELOW AS 'THE CLOSURE PERIOD'.

THE ENTRY OF ALL PERSONS INTO THE CLOSED AREA DURING THE CLOSURE PERIOD, OTHER THAN PERSONS AUTHORISED IN WRITING BY THE FORESTRY CORPORATION OF NEW SOUTH WALES, IS HEREBY PROHIBITED.

PERSONS ENTERING INTO OR REMAINING IN THE CLOSED AREA DURING THE CLOSURE PERIOD WITHOUT FORESTRY CORPORATION OF NEW SOUTH WALES' PERMISSION ARE LIABLE TO PROSECUTION, MAXIMUM PENALTY \$2,200 PER OFFENCE.

DESCRIPTION OF THE CLOSED AREAS

That part of INGALBA State Forest No. 527 enclosed by the boundary commencing at the intersection of Aquarius Road (marked Point 'A' on the map); then, in a clockwise direction around the Closed Area, generally in a easterly direction along the Ingalba State forest boundary and Private Property to the intersection with an unnamed drainage feature (marked point 'B' on the map); then in a generally south-easterly direction along the unnamed drainage line to the intersection with Ingalba State Forest and Private Property boundary (marked Point 'C' on the map); then, in a generally westerly then southerly then westerly direction along Ingalba State Forest and Private Property boundary to the intersection with an unnamed drainage feature (marked Point 'D' on the map); then, in a north-westerly direction along unnamed drainage features back to the intersection with Aquarius Road (marked Point 'A' on the map).

Note: within the closed area, Ingalba Range Road, Balls Road and Maras Creek Road are closed to all but authorised through vehicle traffic. Vehicles must not stop or linger along these sections of the three roads (as mapped) due to safety risks arising from forest operations.

DESCRIPTION OF THE CLOSURE PERIOD

Between 9:00 am Monday 9th December 2024 and 6:00 pm Monday 30th June 2025

BY ORDER OF FORESTRY CORPORATION OF NEW SOUTH WALES, by its delegate:



Dean Caton
REGIONAL MANAGER – NORTHERN
FCNSW COFFS HARBOUR

N
Scale 1:20,000
Datum: GDA94

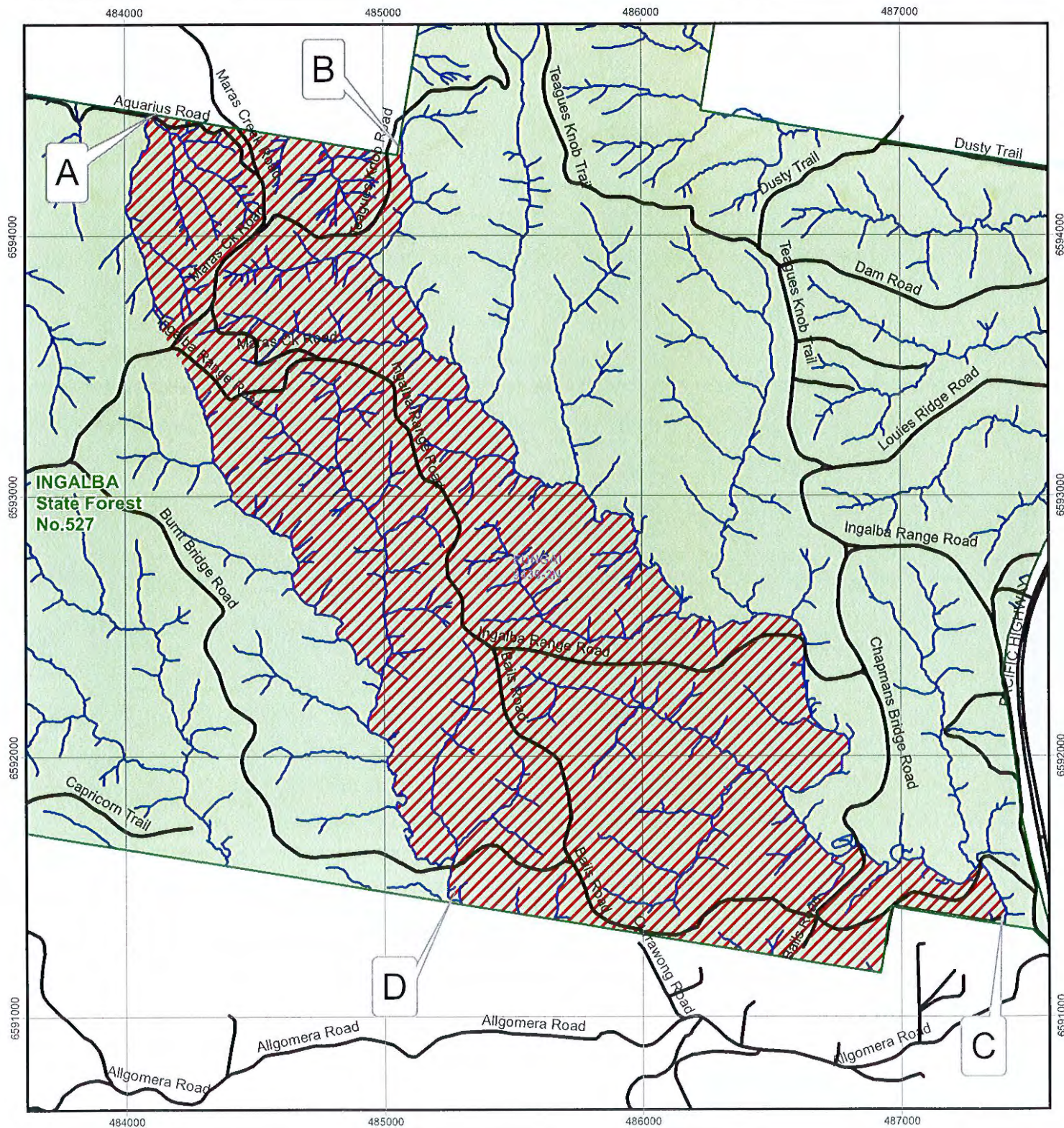
CLOSED AREA

FORESTRY REGULATION 2022 SECTIONS 6 & 7

INGALBA STATE FOREST NO.527



Map Sheets:
1:25,000 EUNGAI 9436-2N
1:100,000 MACKSVILLE 9436



Legend

- Closed Area
- Drainage
- State Forest
- Roads

This map is indicative only.
See supporting document with
description of exclusion area boundaries

