

NO ENTRY

FORESTRY REGULATION 2022 - SECTIONS 6 & 7

CLOSURE OF PART WILD CATTLE CREEK STATE FOREST

FORESTRY CORPORATION OF NEW SOUTH WALES HAS RESERVED THE AREA DESCRIBED BELOW AS 'THE CLOSED AREA' FOR THE EXCLUSIVE USE OF ITS CONTRACTORS, SUPPORT AND SUPERVISING STAFF CARRYING OUT ROAD WORKS AND HARVESTING OPERATIONS DURING THE PERIOD DESCRIBED BELOW AS 'THE CLOSURE PERIOD'.

THE ENTRY OF ALL PERSONS INTO THE CLOSED AREA DURING THE CLOSURE PERIOD, OTHER THAN PERSONS AUTHORISED IN WRITING BY THE FORESTRY CORPORATION OF NEW SOUTH WALES, IS HEREBY PROHIBITED.

PERSONS ENTERING INTO OR REMAINING IN THE CLOSED AREA DURING THE CLOSURE PERIOD WITHOUT FORESTRY CORPORATION OF NEW SOUTH WALES' PERMISSION ARE LIABLE TO PROSECUTION, MAXIMUM PENALTY \$2,200 PER OFFENCE.


DESCRIPTION OF THE CLOSED AREAS

That part of Wild Cattle Creek State Forest No.488 enclosed by the boundary commencing at the intersection of the State Forest boundary and the Little Nymboida River (marked point 'A' on the map); then moving in a clockwise direction around the closure area, following the Little Nymboida River, Bobo River and Mobong Creek to the intersection with Mobong Falls Road (marked point 'B' on the map); then following Mobong Falls, Mines Road and Orange Trees Road to the State Forest boundary (marked point 'C' on the map), then following the state Forest Boundary to the intersection with the Little Nymboida River (marked Point 'A' on the map).

DESCRIPTION OF THE CLOSURE PERIOD

Between 9:00 am Friday 10th May 2024 and 6:00 pm Tuesday 31st December 2024

BY ORDER OF FORESTRY CORPORATION OF NEW SOUTH WALES, by its delegate:

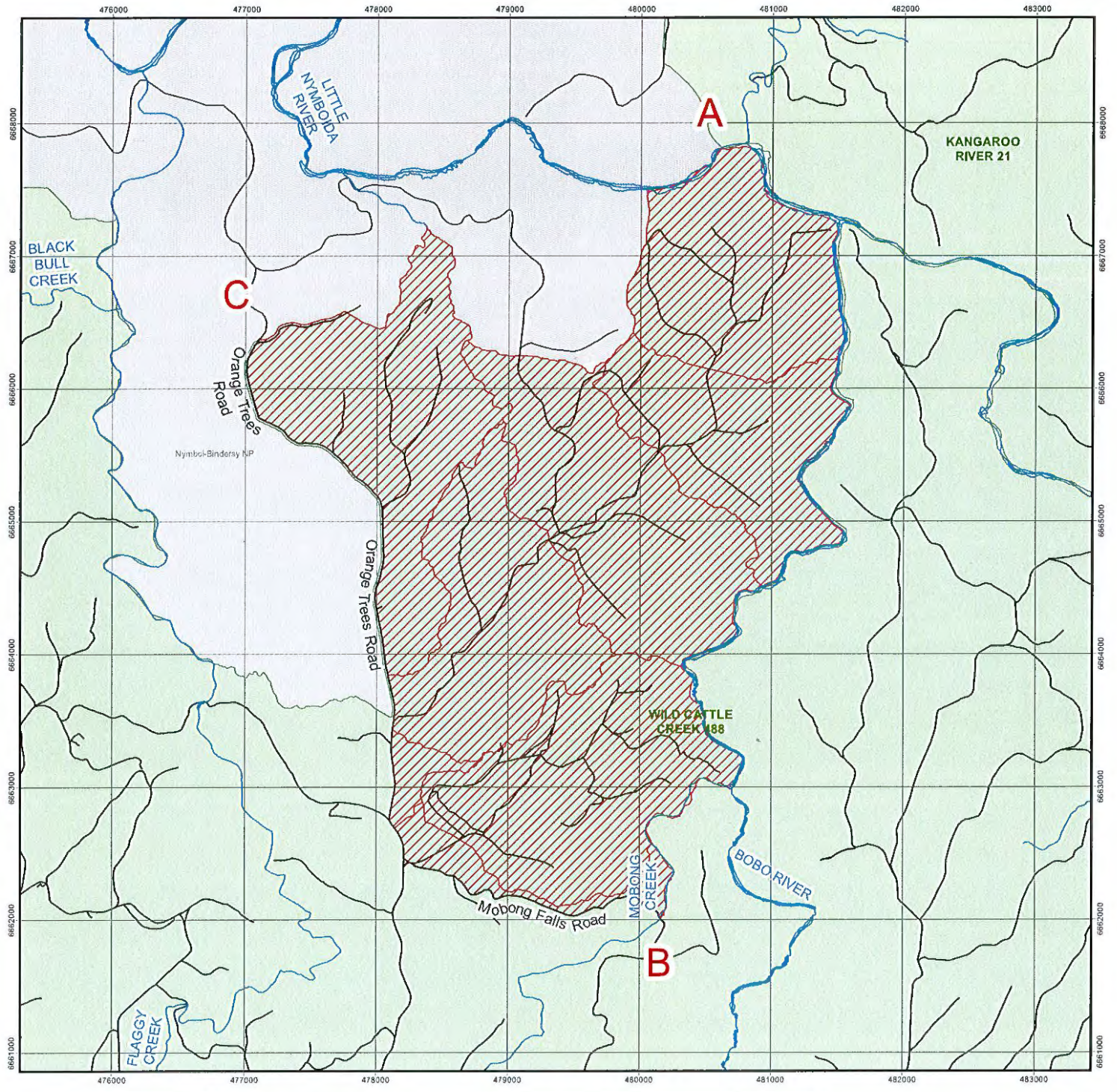


Dean Caton
REGIONAL MANAGER - NORTHERN
FCNSW COFFS HARBOUR

CLOSED AREA



FORESTRY REGULATION 2022 SECTIONS 6 & 7 PART OF WILD CATTLE CREEK STATE FOREST No. 488



Legend

- Drainage — Roads (minor) □ State Forest
- Stream □ Forest_Closure □ National Park Estate

