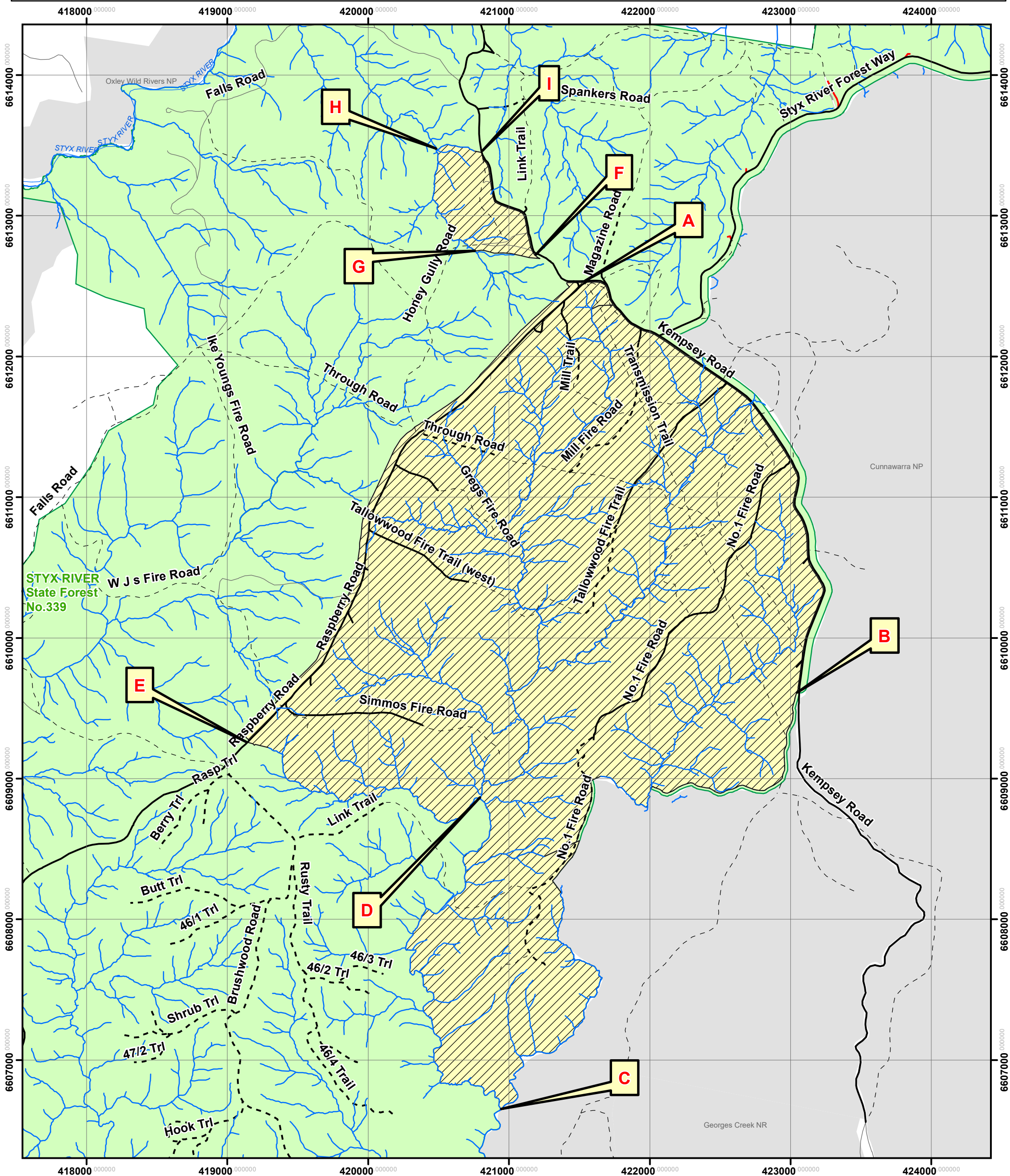


Scale: 1:25,000  
Datum: GDA 1994

# CLOSED AREA - STYX RIVER STATE FOREST

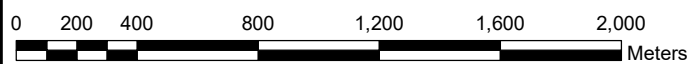
## FORESTRY REGULATION 2022 CLAUSES 6 & 7



### LEGEND

- State Forest
- Closed Area
- Drainage Line
- Roads and Trails
- National Park Estate

This map is indicative only.  
See supporting document with  
description of exclusion area boundaries.



© Crown Copyright 2013. The information and data contained in this map is to the best of Forestry Corporation's belief, true and correct at the time of publication. However, changes in circumstances after the publication may impact upon the accuracy of the material. No warranty or guarantee is provided by the State of New South Wales, Forestry Corporation and its employees and agents and no liability is accepted for any loss or damage, costs or expense resulting from the use or reliance upon the information and data contained in this map

Prepared by: HFD Planning  
Date 24/2/2023