



# PEACH TREE CREEK FLORA NO. 92

---

SITE SPECIFIC WORKING PLAN

## Table of Contents

<b>1. Details of the Reserve</b>	<b>3</b>
1.1 Location	3
1.2 Key Attributes of the reserve	3
1.3 General Description	3
1.4 History	4
1.5 Current Usage	5
<b>2. System of Management</b>	<b>5</b>
2.1 Objectives of Management	5
2.2 Management Strategies	5
2.3 Management Responsibility	7
2.4 Monitoring, Reporting and Review	7
<b>3. List of Appendices</b>	<b>7</b>
<b>Appendix 1 – Locality Map</b>	<b>8</b>
<b>Appendix 2 – Topographic &amp; Forest Type Maps</b>	<b>9</b>
<b>Appendix 3 – Flora Species List</b>	<b>9</b>
<b>Appendix 4 – Fauna Species List</b>	<b>14</b>
<b>Appendix 5 – Approval and Amendments from previous version</b>	<b>17</b>

This site-specific working describes the important values of an individual flora reserve and identifies site-specific priorities for management. The plan is to be read in conjunction with the Flora Reserve Plan: Background and General Management document, which identifies Forestry Corporation's broad objectives and strategies for managing flora reserves. These two documents together form the flora reserve working plan in line with the requirements of section 25 of the *Forestry Act 2012*.

## 1. DETAILS OF THE RESERVE

### 1.1 LOCATION

Peach Tree Creek Flora Reserve is located 21 kilometres by road northwest of the town of Batemans Bay and 42 kilometres southeast of the town of Braidwood. The reserve is situated approximately 5 kilometres north of the Kings Highway in Currowan State Forest. Road access to the western side of the reserve is provided by Lyons Forest Road, leading from the Kings Highway. See Locality Map in Appendix 1.

### 1.2 KEY ATTRIBUTES OF THE RESERVE

Under the *Forestry Act 2012*, flora reserves are set apart for the preservation of native flora.

The reserve possesses the following identified attributes that are to be protected:

- » a good example of natural, undisturbed Spotted Gum Forest typical of the South Coast of New South Wales
- » a long-term reference area within a surrounding mosaic of forestry related disturbances and linking undisturbed corridors
- » representative examples of forest ecosystems in the area
- » Aboriginal cultural and archaeological values of the reserve.

### 1.3 GENERAL DESCRIPTION

#### Area

The reserve occupies the head of Peach Tree Creek, a tributary of Currowan Creek and hence of the Clyde River. It has an area of about 30 hectares and is shaped like an anvil. The western and northern boundaries including the point of the anvil, lie along or close to the watershed, and are formed by Lyons Road and partly Bully Beef Creek Road. The eastern boundary is formed by a spur, and the southern boundary by a well-defined gully.

#### Topography

Peach Tree Creek Flora Reserve is strongly dissected and samples ridge-top to gully. The reserve is situated at the upper end of a small basin feeding the southeast-flowing Peach Tree Creek. The reserve has a general southeasterly aspect, with southerly to southwesterly elements in the point of the anvil, formed by the loop of Lyons Road. It ranges in altitude from 90 metres to 330 metres above sea level. Refer to Appendix 2 for topographic map.

#### Geology and Soils

The gravelly, brown, and grey-brown soils overlaying the parent Ordovician shales, mudstones and sandstone are very poor and shallow on ridges, but become deeper, to about 1.2 m depth on the lower

Document title: Peach Tree Creek Site Specific Working Plan	Version No.: 2	Page 3 of 17
Document ID: D22/5510	Owner: Senior Manager Forest Stewardship	Issue date: 6/9/23
		Review date: 6/9/33

**WARNING: a printed copy of this document may be uncontrolled. Please verify this is the latest version prior to use.**

slopes and in the gullies. The fertility gradient due to soil depth and moisture is very evident in the vegetation in the reserve.

## Climate

The reserve has a temperate, maritime climate. Rainfall in the reserve would be higher than the recorded annual average at Batemans Bay (average climate data from period 1991 to 2021) of 919 mm. Rain is well distributed throughout the year, but the highest falls normally occur in late summer (February), and the lowest in mid-winter (July).

## Vegetation / flora and fauna

Vegetation on the reserve occurs in response to the generally sheltered aspect and includes a good stand of undisturbed moist Spotted Gum Forest. The Spotted Gum Forest types occur through the whole reserve between ridgetops and gully bottoms. Coachwood (forest type 10) occurs in the gully bottoms and extends upslope on the more sheltered, southeasterly aspect. Ferns, vines, and epiphytes are common. The Yellow Stringbark forest (forest type 169) is found on the drier ridge tops along the northern and western boundaries of the reserve. Appendix 2 Map shows the various forest types and their locations within the reserve.

Threatened fauna species recorded within 2 km of the reserve are the Gang Gang Cockatoo (*Callocephalon fimbriatum*), Glossy-Black Cockatoo (*Calyptorhynchus lathamii*), Masked Owl (*Tyto novaehollandiae*), Sooty Owl (*Tyto tenebricosa*), Powerful Owl (*Ninox strenua*), Yellow-bellied Glider (*Petaurus australis*), and Spotted-tailed Quoll (*Dasyurus maculatus*). Appendices 3 and 4 outline a list of flora and fauna species known to occur within the reserve.

## 1.4 HISTORY

### Aboriginal History and Cultural Values

Peach Tree Creek Flora Reserve is situated within the traditional lands of the Yuin people and there are a number of Aboriginal cultural heritage sites located within or within the surrounding area. The area is part of a cultural landscape, used for everyday and ceremonial activities including seasonal food and resource gathering and also as a travel route from the mountains to the coast. Tangible aspects of these activities are evident as walking tracks and scar trees, the remains of camp sites with stone tools (isolated stone artefact and artefact scatters) as well as sacred features and places created at the beginning of time.

### Post European Settlement

#### Harvesting

There are no recorded harvest events within the Reserve. There has been no grazing in the Reserve.

#### Fire

Fire has been part of the Australian landscape for at least the last 60,000 years and most forests have experienced fire multiple times over many centuries. The reserve has been impacted by wildfires in the years 1956, 1968, 2006, and most recently during the 2019-20 summer season, with high to extreme fire intensity recorded. This has resulted in areas of the canopy being partially burnt with discrete areas of full canopy scorch.

The drier ridge along Lyons Road in the north and west has been included in periodic low intensity hazard reduction burns in the past.

### Establishment of Flora Reserve

This area was formerly known as Spotted Gum, Currowan and Peach Tree Gully Forest Preserve. The area was then gazetted as Flora Reserve No. 97557 on 7<sup>th</sup> November 1986. In a general renumbering of

Document title: Peach Tree Creek Site Specific Working Plan	Version No.: 2	Page 4 of 17
Document ID: D22/5510	Owner: Senior Manager Forest Stewardship	Issue date: 6/9/23
		Review date: 6/9/33

**WARNING: a printed copy of this document may be uncontrolled. Please verify this is the latest version prior to use.**

Flora Reserves in the Government Gazette of 24 July 1987, the reserve became Peach Tree Creek Flora Reserve No. 92.

## 1.5 CURRENT USAGE

The reserve receives limited recreational usage, primarily by visitors driving pass the reserve on Lyons Road. No recreational facilities are provided at the reserve and there is no intention to develop any facilities.

## 2. SYSTEM OF MANAGEMENT

### 2.1 OBJECTIVES OF MANAGEMENT

The objects of management will be to:

- » protect existing flora and fauna
- » preserve the natural, undisturbed Spotted Gum Forest
- » protect representative examples of forest ecosystems in the area
- » protect Aboriginal cultural heritage sites and cultural values.
- » maintain reference stands and provide for limited scientific study consistent with the protection of the area, including the development of an understanding of successional growth processes after disturbance and as a reference for assessing the effects of alternative land use in surrounding areas
- » provide for the continued protection of the reserve and neighboring areas from damaging wildfire and other agents.

### 2.2 MANAGEMENT STRATEGIES

The broad management strategies and related actions to preserve native flora and improve the value and extent of habitat in State forest flora reserves are detailed in the Flora Reserve Management Plan: Background and General Management document, which is to be read in conjunction with this plan. Specific additional management strategies applied in this flora reserve may include:

- » Property maintenance, through:
  - establishment and maintenance of appropriate fences, gates, and signs
  - removal of unnecessary fencing
  - restricting visitor use to walking trails for educational activities.
- » Conservation and improvement of habitat, through:
  - maintenance of native vegetation, which may include manipulation by mechanical means for habitat improvement
  - regeneration of any cleared or degraded land, through plantings and natural recruitment
  - removal of rubbish
  - weed control
  - management of human disturbance, including harvesting and other forest product operations

Document title: Peach Tree Creek Site Specific Working Plan	Version No.: 2	Page 5 of 17
Document ID: D22/5510	Owner: Senior Manager Forest Stewardship	Issue date: 6/9/23
		Review date: 6/9/33

**WARNING: a printed copy of this document may be uncontrolled. Please verify this is the latest version prior to use.**

- retention of dead timber and other habitat resources
  - management of fire, including prescribed or hazard reduction burning.
- » Pest animal control.

## Cultural Values

Explore opportunities for Aboriginal community involvement in managing the flora reserve.

Heritage items identified as of local or State significance, so appearing in Forestry Corporation's Heritage and Conservation Register (S.170 register) or State Heritage Register, will be maintained with due diligence in accordance with State Owned [Heritage Management Principles](#) (S.170A of the *Heritage Act 1977*).

## Weeds

The vegetation within the flora reserve is in very healthy state with no obvious weeds present. As far as reasonably practicable, exotic species will be controlled, as detailed in section 2.4.

## Trail maintenance

Maintenance of roads and trails is important to enable access to the forest for forest management, firefighting, tourism and recreation. Poorly maintained roads can also transport significant levels of sediment, increasing the turbidity of water within creeks. This consequently reduces habitat quality and aquatic biodiversity and can take significant periods of time to recover.

## Permitted activities

Under the Forest Management Zoning (FMZ) system, Peach Tree Creek Flora Reserve No. 92 is a dedicated reserve zoned FMZ 1 and therefore contributes to the dedicated reserve system in the Southern Region. Management will be consistent with the requirements of JANIS dedicated reserves.

The State Forests of NSW, Operational Circular 99/10 (1999) *Managing our Forests sustainably: Forest Management Zoning in NSW State Forests* describes the activities not permitted in FMZ 1.

The following activities may be permitted subject to standard conditions approved by the delegated Manager and consistent with the management objectives for the reserve, relevant codes of practice, forest practices / operational circulars, protocols, licenses and management / recovery plans:

- » scientific studies (e.g., fauna surveys including trapping)
- » maintenance of existing roads and fire trails
- » maintenance of existing recreation facilities and upgrading where necessary to keep pace with demand while protecting the attributes of the reserve
- » limited tree and or limb removal for safety, viewing or construction of facilities in areas used for recreation
- » pest animal and weed control
- » general access for activities such as bush walking, photography, and nature study
- » beekeeping (existing set-down sites may be used)
- » Aboriginal use of forest products consistent with the maintenance of the conservation attributes to be protected in the reserve
- » fire management will be undertaken in a manner consistent with maintaining the health of forest ecosystems.

The following activities may only be permitted with special conditions:

Document title: Peach Tree Creek Site Specific Working Plan	Version No.: 2	Page 6 of 17
Document ID: D22/5510	Owner: Senior Manager Forest Stewardship	Issue date: 6/9/23
		Review date: 6/9/33

**WARNING: a printed copy of this document may be uncontrolled. Please verify this is the latest version prior to use.**

- » Construction of new roads. Construction will only be permitted in exceptional instances and consistent with the following principles:
  - no practical alternative is available
  - the attributes of the reserve will not be significantly affected by the road or fire trail
  - opportunity is provided for public comment on the proposal, obtained through advertising in the local newspaper
  - Ministerial approval is given for the proposal.

## Mining

The reserve was exempted from the provisions of the *Mining Act 1992* by notice in the Government Gazette of 15<sup>th</sup> April 1988.

## 2.3 MANAGEMENT RESPONSIBILITY

The reserve will be administered by Forestry Corporation of NSW's Hardwoods Division with the authority for decision making delegated to the Senior Manager Forest Stewardship equivalent level manager.

## 2.4 MONITORING, REPORTING AND REVIEW

The region will monitor changes to the key attributes of the reserve and will review the effectiveness of the management strategies designed to protect those attributes and to achieve the management objectives.

The results of this monitoring, review and management response will be included in annual reporting processes.

The provisions of this working plan will be amended, if necessary, in light of the results of the monitoring program and / or legislative change and with the approval of the Minister administering the *Forestry Act 2012*.

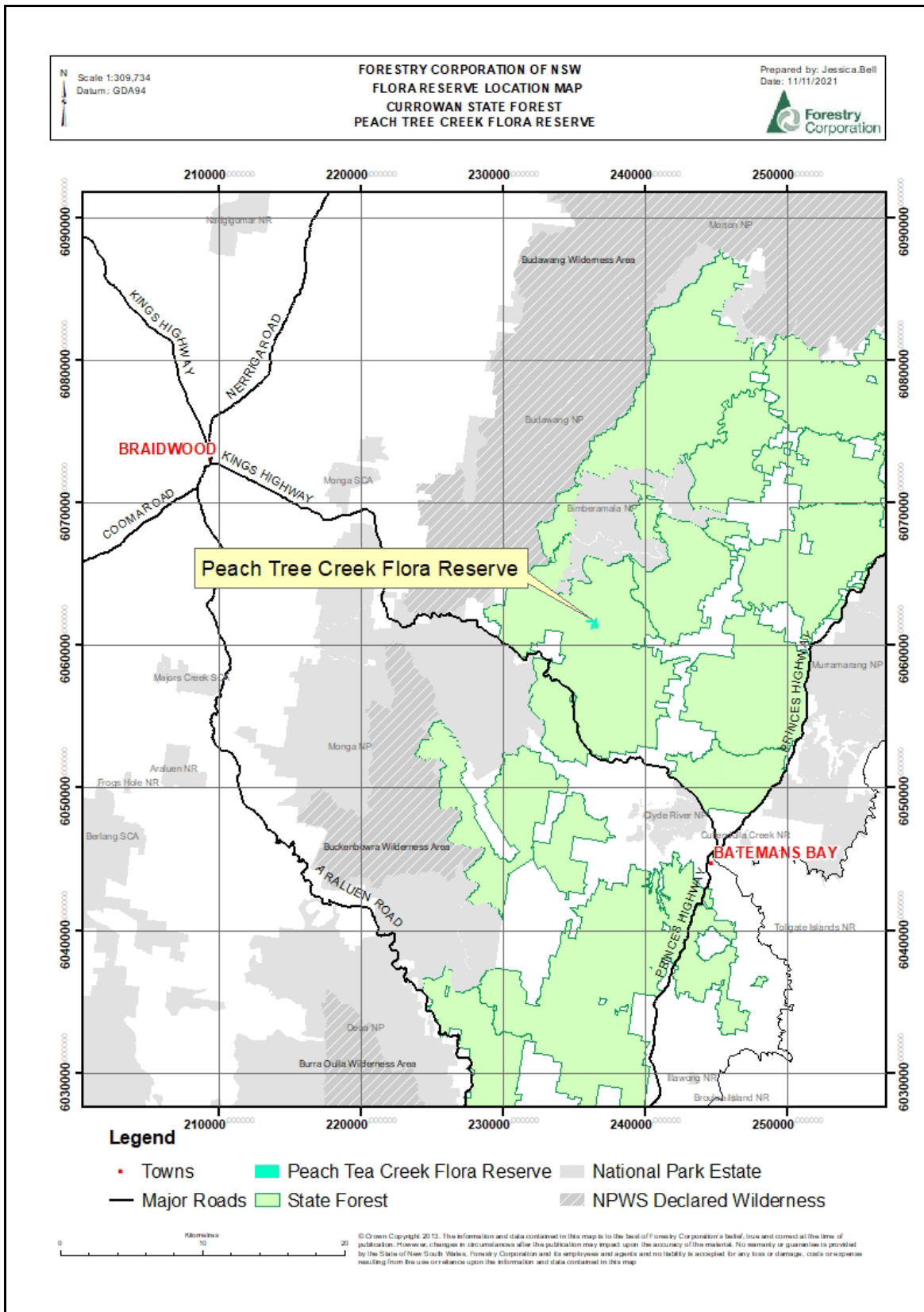
## 3. LIST OF APPENDICES

- » Appendix 1 – Locality Map
- » Appendix 2 – Topographic and Forest Type Map
- » Appendix 3 – Flora Species List
- » Appendix 4 – Fauna Species List
- » Appendix 5 – Approval and Amendments from previous version

Document title: Peach Tree Creek Site Specific Working Plan	Version No.: 2	Page 7 of 17
Document ID: D22/5510	Owner: Senior Manager Forest Stewardship	Issue date: 6/9/23
		Review date: 6/9/33

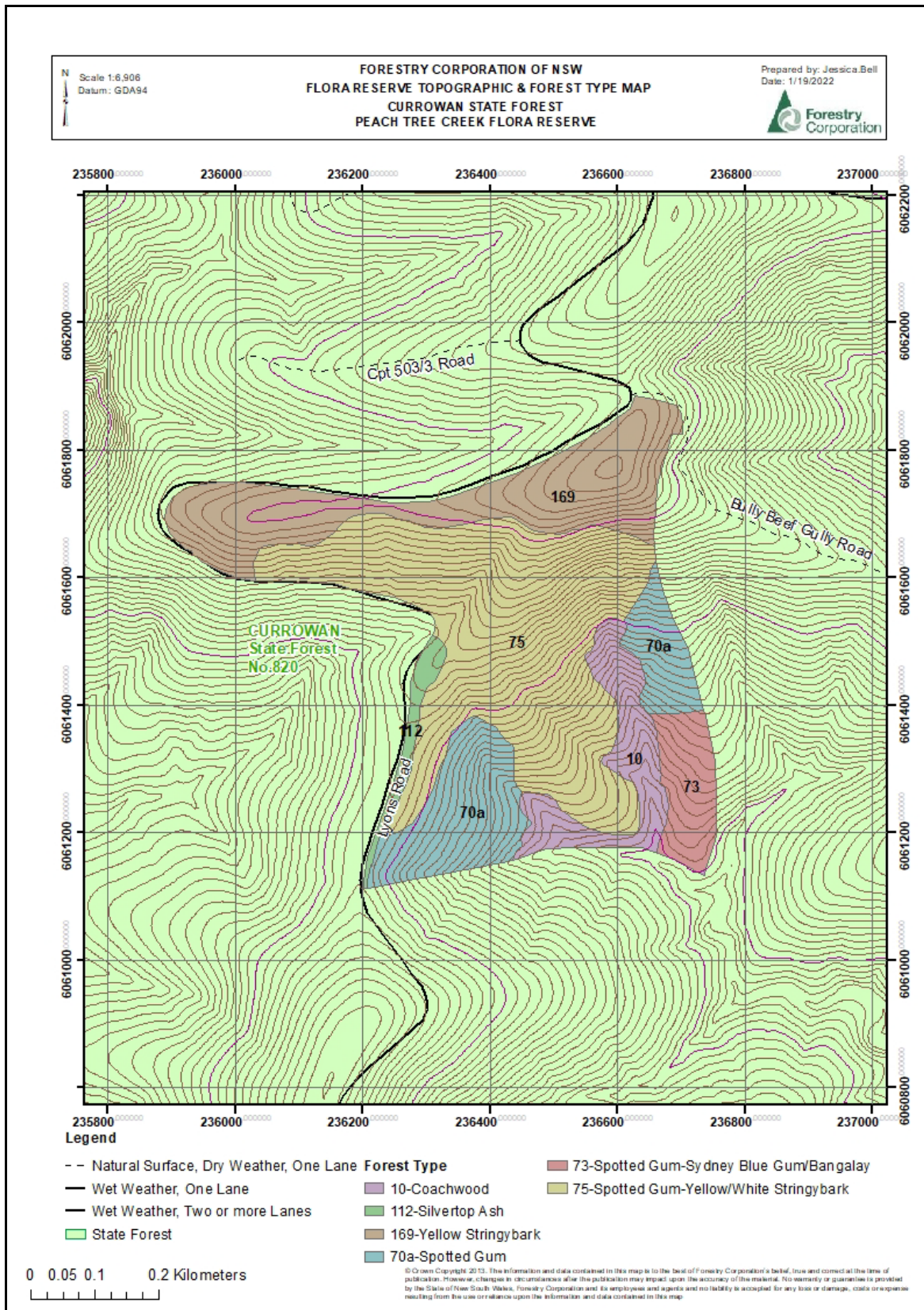
**WARNING: a printed copy of this document may be uncontrolled. Please verify this is the latest version prior to use.**

# APPENDIX 1 – LOCALITY MAP





# APPENDIX 2 – TOPOGRAPHIC & FOREST TYPE MAPS



# APPENDIX 3 – FLORA SPECIES LIST

Document title: Peach Tree Creek Site Specific Working Plan	Version No.: 2	Page 9 of 17
Document ID: D22/5510	Owner: Senior Manager Forest Stewardship	Issue date: 6/9/23
		Review date: 6/9/33

**WARNING: a printed copy of this document may be uncontrolled. Please verify this is the latest version prior to use.**

**Flora found within 5000m of Flora Reserve, desktop search undertaken November 2021**

Scientific name
<i>Acacia elongata</i>
<i>Acacia falciformis</i>
<i>Acacia floribunda</i>
<i>Acacia implexa</i>
<i>Acacia irrorata subsp. irrorata</i>
<i>Acacia mabellae</i>
<i>Acacia maidenii</i>
<i>Acacia mearnsii</i>
<i>Acacia melanoxylon</i>
<i>Acacia myrtifolia</i>
<i>Acacia obtusifolia</i>
<i>Acacia terminalis</i>
<i>Acacia terminalis subsp. angustifolia</i>
<i>Acacia trachyphloia</i>
<i>Acacia ulicifolia</i>
<i>Acetosa sagittata</i>
<i>Acmena smithii</i>
<i>Acronychia oblongifolia</i>
<i>Adiantum aethiopicum</i>
<i>Adiantum formosum</i>
<i>Adiantum hispidulum</i>
<i>Ajuga australis</i>
<i>Alectryon subcinereus</i>
<i>Allocauarina littoralis</i>
<i>Alphitonia excelsa</i>
<i>Amperea xiphoclada var. xiphoclada</i>
<i>Andropogon virginicus</i>
<i>Angophora floribunda</i>
<i>Anisopogon avenaceus</i>
<i>Aotus ericoides</i>
<i>Aphanopetalum resinosum</i>
<i>Aristida ramosa</i>
<i>Aristida vagans</i>
<i>Arthropodium milleflorum</i>
<i>Arthropodium spp.</i>
<i>Arthropteris tenella</i>
<i>Asplenium australasicum</i>
<i>Asplenium bulbiferum subsp. gracillimum</i>
<i>Asplenium flabellifolium</i>

Scientific name
<i>Asplenium polyodon</i>
<i>Astrotricha latifolia</i>
<i>Australina pusilla</i>
<i>Austrostipa rudis</i>
<i>Axonopus fissifolius</i>
<i>Backhousia myrtifolia</i>
<i>Baloghia inophylla</i>
<i>Banksia spinulosa var. spinulosa</i>
<i>Beyeria lasiocarpa</i>
<i>Billardiera scandens</i>
<i>Blechnum cartilagineum</i>
<i>Blechnum neohollandicum</i>
<i>Blechnum nudum</i>
<i>Blechnum patersonii</i>
<i>Blechnum patersonii subsp. patersonii</i>
<i>Blechnum wattsii</i>
<i>Boronia microphylla</i>
<i>Bossiaea buxifolia</i>
<i>Bossiaea obcordata</i>
<i>Brachyloma daphnoides</i>
<i>Breynia oblongifolia</i>
<i>Brunoniella pumilio</i>
<i>Bulbophyllum exiguum</i>
<i>Bursaria spinosa</i>
<i>Bursaria spinosa subsp. lasiophylla</i>
<i>Bursaria spinosa subsp. spinosa</i>
<i>Callicoma serratifolia</i>
<i>Callitriche muelleri</i>
<i>Calochlaena dubia</i>
<i>Calystegia marginata</i>
<i>Carex appressa</i>
<i>Carex breviculmis</i>
<i>Carex longebrachiata</i>
<i>Cassinia aculeata</i>
<i>Cassinia longifolia</i>
<i>Cassinia trinerva</i>
<i>Cassinia uncata</i>
<i>Cassytha glabella</i>
<i>Cassytha glabella f. glabella</i>
<i>Cassytha pubescens</i>

Scientific name
<i>Casuarina cunninghamiana subsp. cunninghamiana</i>
<i>Caustis recurvata</i>
<i>Celastrus australis</i>
<i>Cenchrus caliculatus</i>
<i>Centella asiatica</i>
<i>Cephalomanes caudatum</i>
<i>Ceratopetalum apetalum</i>
<i>Cheilanthes sieberi subsp. sieberi</i>
<i>Cirsium vulgare</i>
<i>Cissus antarctica</i>
<i>Cissus hypoglauca</i>
<i>Citronella moorei</i>
<i>Claoxylon australe</i>
<i>Clematis aristata</i>
<i>Clematis glycinoides</i>
<i>Clerodendrum tomentosum</i>
<i>Commersonia fraseri</i>
<i>Convolvulus arvensis</i>
<i>Conyza sumatrensis</i>
<i>Coronidium scorpioides</i>
<i>Correa reflexa</i>
<i>Correa reflexa var. reflexa</i>
<i>Corymbia gummifera</i>
<i>Corymbia maculata</i>
<i>Crepidomanes venosum</i>
<i>Cryptocarya glaucescens</i>
<i>Cryptocarya microneura</i>
<i>Cyathea australis</i>
<i>Cyathea leichhardtiana</i>
<i>Cyathochaeta diandra</i>
<i>Cymbidium suave</i>
<i>Cymbopogon refractus</i>
<i>Cynodon dactylon</i>
<i>Dampiera purpurea</i>
<i>Daviesia ulicifolia subsp. ulicifolia</i>
<i>Delairea odorata</i>
<i>Dendrobium pugioniforme</i>
<i>Dendrobium striolatum</i>
<i>Dendrocnide excelsa</i>
<i>Dennstaedtia davallioides</i>
<i>Desmodium gunnii</i>

Scientific name
<i>Desmodium rhytidophyllum</i>
<i>Desmodium varians</i>
<i>Dianella caerulea</i>
<i>Dianella caerulea</i> var. <i>assera</i>
<i>Dianella caerulea</i> var. <i>caerulea</i>
<i>Dianella revoluta</i>
<i>Dichelachne inaequiglumis</i>
<i>Dichelachne micrantha</i>
<i>Dichondra repens</i>
<i>Dicksonia antarctica</i>
<i>Digitaria ramularis</i>
<i>Dillwynia phyllicoides</i>
<i>Dillwynia sericea</i>
<i>Dillwynia sieberi</i>
<i>Diplazium australe</i>
<i>Diuris sulphurea</i>
<i>Doodia australis</i>
<i>Doryphora sassafras</i>
<i>Echinopogon caespitosus</i>
<i>Echinopogon ovatus</i>
<i>Ehretia acuminata</i> var. <i>acuminata</i>
<i>Elaeocarpus reticulatus</i>
<i>Elatostema reticulatum</i>
<i>Emmenosperma alphonoides</i>
<i>Entolasia marginata</i>
<i>Entolasia stricta</i>
<i>Eragrostis brownii</i>
<i>Eragrostis</i> spp.
<i>Eriobotrya japonica</i>
<i>Eucalyptus agglomerata</i>
<i>Eucalyptus angophoroides</i>
<i>Eucalyptus bosistoana</i>
<i>Eucalyptus botryoides</i>
<i>Eucalyptus botryoides</i> <--> <i>saligna</i>
<i>Eucalyptus consideniensis</i>
<i>Eucalyptus cypellocarpa</i>
<i>Eucalyptus elata</i>
<i>Eucalyptus fastigata</i>
<i>Eucalyptus globoidea</i>
<i>Eucalyptus muelleriana</i>
<i>Eucalyptus obliqua</i>
<i>Eucalyptus paniculata</i> subsp. <i>paniculata</i>
<i>Eucalyptus pilularis</i>

Scientific name
<i>Eucalyptus piperita</i>
<i>Eucalyptus saligna</i>
<i>Eucalyptus scias</i> subsp. <i>callimastha</i>
<i>Eucalyptus sieberi</i>
<i>Eupomatia laurina</i>
<i>Eustrephus latifolius</i>
<i>Ficus coronata</i>
<i>Ficus rubiginosa</i>
<i>Fieldia australis</i>
<i>Gahnia aspera</i>
<i>Gahnia clarkei</i>
<i>Gahnia melanocarpa</i>
<i>Gahnia radula</i>
<i>Gahnia</i> spp.
<i>Galium binifolium</i>
<i>Galium gaudichaudii</i>
<i>Gamochaeta coarctata</i>
<i>Geitonoplesium cymosum</i>
<i>Genoplesium vernale</i>
<i>Geranium homeanum</i>
<i>Gleichenia dicarpa</i>
<i>Glochidion ferdinandi</i> var. <i>ferdinandi</i>
<i>Glyceria maxima</i>
<i>Glycine clandestina</i>
<i>Glycine microphylla</i>
<i>Glycine tabacina</i>
<i>Gompholobium glabratum</i>
<i>Gompholobium grandiflorum</i>
<i>Gonocarpus tetragynus</i>
<i>Gonocarpus teucroides</i>
<i>Goodenia heterophylla</i> subsp. <i>eglandulosa</i>
<i>Goodenia ovata</i>
<i>Grevillea arenaria</i>
<i>Gynatrix pulchella</i>
<i>Gynochthodes jasminoides</i>
<i>Hackelia latifolia</i>
<i>Hakea eriantha</i>
<i>Hakea sericea</i>
<i>Hardenbergia violacea</i>
<i>Hedycarya angustifolia</i>
<i>Helichrysum leucopsidum</i>
<i>Hibbertia aspera</i>
<i>Hibbertia dentata</i>

Scientific name
<i>Hibbertia empetrifolia</i> subsp. <i>empetrifolia</i>
<i>Hibbertia obtusifolia</i>
<i>Hibbertia scandens</i>
<i>Histiopteris incisa</i>
<i>Homalanthus populifolius</i>
<i>Howittia trilocularis</i>
<i>Hydrocotyle geraniifolia</i>
<i>Hydrocotyle hirta</i>
<i>Hydrocotyle laxiflora</i>
<i>Hydrocotyle</i> spp.
<i>Hymenophyllum cupressiforme</i>
<i>Hypericum gramineum</i>
<i>Hypochaeris radicata</i>
<i>Hypolepis glandulifera</i>
<i>Hypolepis muelleri</i>
<i>Hypoxis hygrometrica</i> var. <i>villosisepala</i>
<i>Imperata cylindrica</i>
<i>Indigofera australis</i>
<i>Isopogon anemonifolius</i>
<i>Juncus homalocaulis</i>
<i>Kennedia rubicunda</i>
<i>Kunzea ambigua</i>
<i>Kunzea parvifolia</i>
<i>Lagenifera stipitata</i>
<i>Lagenophora gracilis</i>
<i>Lastreopsis acuminata</i>
<i>Lastreopsis decomposita</i>
<i>Lastreopsis microsora</i> subsp. <i>microsora</i>
<i>Legnephora moorei</i>
<i>Lepidosperma filiforme</i>
<i>Lepidosperma laterale</i>
<i>Lepidosperma urophorum</i>
<i>Leptomera acida</i>
<i>Leptospermum emarginatum</i>
<i>Leptospermum trinervium</i>
<i>Leucopogon lanceolatus</i>
<i>Leucopogon lanceolatus</i> var. <i>lanceolatus</i>
<i>Libertia paniculata</i>
<i>Lindsaea linearis</i>
<i>Lindsaea microphylla</i>
<i>Livistona australis</i>
<i>Lobelia pedunculata</i>



Scientific name
<i>Lobelia purpurascens</i>
<i>Lomandra confertifolia</i> subsp. <i>rubiginosa</i>
<i>Lomandra confertifolia</i> subsp. <i>similis</i>
<i>Lomandra filiformis</i>
<i>Lomandra longifolia</i>
<i>Lomandra multiflora</i> subsp. <i>multiflora</i>
<i>Lomandra obliqua</i>
<i>Lomatia ilicifolia</i>
<i>Lomatia myricoides</i>
<i>Lomatia silaifolia</i>
<i>Macrozamia communis</i>
<i>Marsdenia flavescens</i>
<i>Marsdenia rostrata</i>
<i>Melicytus dentatus</i>
<i>Microlaena stipoides</i>
<i>Microlaena stipoides</i> var. <i>stipoides</i>
<i>Microsorium pustulatum</i>
<i>Microsorium scandens</i>
<i>Myoporum bateae</i>
<i>Myrsine howittiana</i>
<i>Myrsine variabilis</i>
<i>Notelaea longifolia</i>
<i>Notelaea longifolia</i> f. <i>longifolia</i>
<i>Notelaea venosa</i>
<i>Olearia argophylla</i>
<i>Olearia tenuifolia</i>
<i>Opercularia aspera</i>
<i>Opercularia varia</i>
<i>Oplismenus aemulus</i>
<i>Oplismenus imbecillis</i>
<i>Oxalis chnoodes</i>
<i>Oxalis corniculata</i>
<i>Oxalis perennans</i>
<i>Oxalis</i> spp.
<i>Ozothamnus argophyllus</i>
<i>Ozothamnus diosmifolius</i>
<i>Palmeria scandens</i>
<i>Pandorea pandorana</i>
<i>Panicum simile</i>
<i>Parsonsia brownii</i>
<i>Parsonsia straminea</i>
<i>Paspalidium gracile</i>

Scientific name
<i>Paspalum dilatatum</i>
<i>Passiflora edulis</i>
<i>Passiflora herbertiana</i> subsp. <i>herbertiana</i>
<i>Patersonia glabrata</i>
<i>Pelargonium inodorum</i>
<i>Pellaea falcata</i>
<i>Pellaea nana</i>
<i>Persoonia lanceolata</i>
<i>Persoonia levis</i>
<i>Persoonia linearis</i>
<i>Petrophile pedunculata</i>
<i>Phyllanthus gunnii</i>
<i>Phyllanthus hirtellus</i>
<i>Picris angustifolia</i> subsp. <i>angustifolia</i>
<i>Pimelea axiflora</i> subsp. <i>axiflora</i>
<i>Pimelea glauca</i>
<i>Pimelea linifolia</i> subsp. <i>linifolia</i>
<i>Piper hederaceum</i> var. <i>hederaceum</i>
<i>Pittosporum multiflorum</i>
<i>Pittosporum revolutum</i>
<i>Pittosporum undulatum</i>
<i>Plantago varia</i>
<i>Platysace lanceolata</i>
<i>Plectorrhiza tridentata</i>
<i>Plectranthus parviflorus</i>
<i>Poa ensiformis</i>
<i>Poa labillardierei</i> var. <i>labillardierei</i>
<i>Poa meionectes</i>
<i>Poa sieberiana</i> var. <i>sieberiana</i>
<i>Podolobium ilicifolium</i>
<i>Polymeria calycina</i>
<i>Polyosma cunninghamii</i>
<i>Polyscias elegans</i>
<i>Polyscias murrayi</i>
<i>Polyscias sambucifolia</i> subsp. <i>decomposita</i>
<i>Polyscias sambucifolia</i> subsp. <i>sambucifolia</i>
<i>Polystichum australiense</i>
<i>Polystichum proliferum</i>
<i>Pomaderris aspera</i>
<i>Pomax umbellata</i>
<i>Poranthera corymbosa</i>

Scientific name
<i>Poranthera microphylla</i>
<i>Prostanthera incana</i>
<i>Prostanthera incisa</i>
<i>Prostanthera lasianthos</i>
<i>Pseuderanthemum variabile</i>
<i>Psychotria loniceroides</i>
<i>Pteridium esculentum</i>
<i>Pteris tremula</i>
<i>Pteris umbrosa</i>
<i>Pterostylis curta</i>
<i>Pterostylis pedunculata</i>
<i>Pterostylis</i> spp.
<i>Pultenaea daphnoides</i>
<i>Pultenaea flexilis</i>
<i>Pultenaea linophylla</i>
<i>Pultenaea retusa</i>
<i>Pultenaea spinosa</i>
<i>Pultenaea villifera</i>
<i>Pyrrosia rupestris</i>
<i>Ranunculus plebeius</i>
<i>Rhodamnia rubescens</i>
<i>Ripogonum album</i>
<i>Robinia pseudoacacia</i>
<i>Rubus moluccanus</i> var. <i>trilobus</i>
<i>Rubus nebulosus</i>
<i>Rubus parvifolius</i>
<i>Rubus rosifolius</i>
<i>Rumohra adiantiformis</i>
<i>Rytidosperma longifolium</i>
<i>Rytidosperma pallidum</i>
<i>Sambucus australasica</i>
<i>Sannantha pluriflora</i>
<i>Sarcochilus falcatus</i>
<i>Sarcochilus parviflorus</i>
<i>Sarcopetalum harveyanum</i>
<i>Scaevola ramosissima</i>
<i>Schelhammera undulata</i>
<i>Schizomeria ovata</i>
<i>Schoenus melanostachys</i>
<i>Senna barronfieldii</i>
<i>Senna septemtrionalis</i>
<i>Sigesbeckia orientalis</i> subsp. <i>orientalis</i>
<i>Smilax australis</i>
<i>Smilax glycyphylla</i>

Scientific name
<i>Solanum aviculare</i>
<i>Solanum chenopodioides</i>
<i>Solanum prinophyllum</i>
<i>Solanum pseudocapsicum</i>
<i>Solanum pungetium</i>
<i>Stellaria flaccida</i>
<i>Stephania japonica</i>
<i>Stephania japonica</i> var. <i>discolor</i>
<i>Sticherus lobatus</i>
<i>Synoum glandulosum</i> subsp. <i>glandulosum</i>
<i>Tasmania insipida</i>
<i>Tasmania lanceolata</i>
<i>Tetratheca thymifolia</i>

Scientific name
<i>Themeda triandra</i>
<i>Tmesipteris parva</i>
<i>Tradescantia fluminensis</i>
<i>Trema tomentosa</i> var. <i>aspera</i>
<i>Tristaniopsis collina</i>
<i>Tristaniopsis laurina</i>
<i>Trophis scandens</i>
<i>Trophis scandens</i> subsp. <i>scandens</i>
<i>Tylophora barbata</i>
<i>Urtica incisa</i>
<i>Verbascum thapsus</i> subsp. <i>thapsus</i>
<i>Verbena rigida</i> var. <i>rigida</i>

Scientific name
<i>Vernonia cinerea</i>
<i>Vernonia cinerea</i> var. <i>cinerea</i>
<i>Veronica plebeia</i>
<i>Viola betonicifolia</i>
<i>Viola hederacea</i>
<i>Vittadinia cuneata</i> var. <i>cuneata</i>
<i>Vittadinia</i> spp.
<i>Wahlenbergia gracilis</i>
<i>Wahlenbergia stricta</i> subsp. <i>stricta</i>
<i>Xanthorrhoea concava</i>
<i>Xanthosia pilosa</i>
<i>Zieria smithii</i>

## APPENDIX 4 – FAUNA SPECIES LIST

### Fauna found within 5000m of Flora Reserve, desktop search undertaken November 2021

Amphibians and reptiles	
Scientific name	Common name
<i>Limnodynastes peronii</i>	Brown-striped Frog
<i>Crinia signifera</i>	Common Eastern Froglet
<i>Litoria aurea</i>	Green and Golden Bell Frog
<i>Litoria nudidigita</i>	Leaf Green River Tree Frog
<i>Litoria lesueuri</i>	Lesueur's

Amphibians and reptiles	
Scientific name	Common name
	Frog
<i>Egernia saxatilis</i>	Black Rock Skink
<i>Lampropholis delicata</i>	Dark-flecked Garden Sunskink
<i>Pseudonaja textilis</i>	Eastern Brown Snake
<i>Intellagama lesueurii</i>	Eastern Water Dragon
<i>Varanus varius</i>	Lace Monitor

Amphibians and reptiles	
Scientific name	Common name
<i>Lampropholis guichenoti</i>	Pale-flecked Garden Sunskink
<i>Lampropholis sp.</i>	unidentified grass skink
<i>Eulamprus heatwolei</i>	Yellow-bellied Water-skink

Birds	
Scientific name	Common name
<i>Alisterus scapularis</i>	Australian King-Parrot
<i>Gymnorhina tibicen</i>	Australian Magpie
<i>Aegotheles cristatus</i>	Australian Owlet-nightjar
<i>Corvus coronoides</i>	Australian Raven
<i>Zoothera lunulata</i>	Bassian Thrush
<i>Monarcha melanopsis</i>	Black-faced Monarch
<i>Macropygia phasianella</i>	Brown Cuckoo-Dove
<i>Falco berigora</i>	Brown Falcon
<i>Gerygone mouki</i>	Brown Gerygone
<i>Acanthiza pusilla</i>	Brown Thornbill
<i>Phaps elegans</i>	Brush Bronzewing
<i>Phaps chalcoptera</i>	Common Bronzewing
<i>Platycercus</i>	Crimson

Birds	
Scientific name	Common name
<i>elegans</i>	Rosella
<i>Acanthorhynchus tenuirostris</i>	Eastern Spinebill
<i>Psophodes olivaceus</i>	Eastern Whipbird
<i>Eopsaltria australis</i>	Eastern Yellow Robin
<i>Cacomantis flabelliformis</i>	Fan-tailed Cuckoo
<i>Callocephalon fimbriatum</i>	Gang-gang Cockatoo
<i>Calyptorhynchus lathami</i>	Glossy Black-Cockatoo
<i>Pachycephala pectoralis</i>	Golden Whistler
<i>Cracticus torquatus</i>	Grey Butcherbird
<i>Rhipidura albiscapa</i>	Grey Fantail
<i>Colluricincla harmonica</i>	Grey Shrike-thrush
<i>Dacelo novaeguineae</i>	Laughing Kookaburra
<i>Myiagra rubecula</i>	Leaden Flycatcher

Birds	
Scientific name	Common name
<i>Meliphaga lewinii</i>	Lewin's Honeyeater
<i>Glossopsitta pusilla</i>	Little Lorikeet
<i>Tyto novaehollandiae</i>	Masked Owl
<i>Dicaeum hirundinaceum</i>	Mistletoebird
<i>Phylidonyris novaehollandiae</i>	New Holland Honeyeater
<i>Philemon corniculatus</i>	Noisy Friarbird
<i>Anas superciliosa</i>	Pacific Black Duck
<i>Strepera graculina</i>	Pied Currawong
<i>Ninox strenua</i>	Powerful Owl
<i>Anthochaera carunculata</i>	Red Wattlebird
<i>Neochmia temporalis</i>	Red-browed Finch
<i>Climacteris erythrops</i>	Red-browed Treecreeper
<i>Petroica rosea</i>	Rose Robin

Birds	
Scientific name	Common name
<i>Rhipidura rufifrons</i>	Rufous Fantail
<i>Pachycephala rufiventris</i>	Rufous Whistler
<i>Todiramphus sanctus</i>	Sacred Kingfisher
<i>Ptilonorhynchus violaceus</i>	Satin Bowerbird
<i>Chalcites lucidus</i>	Shining Bronze-Cuckoo
<i>Zosterops lateralis</i>	Silvereye
<i>Ninox novaeseelandiae</i>	Southern Boobook
<i>Pardalotus punctatus</i>	Spotted Pardalote
<i>Cinclosoma punctatum</i>	Spotted Quail-thrush

Birds	
Scientific name	Common name
<i>Spilopelia chinensis</i>	Spotted Turtle-Dove
<i>Acanthiza lineata</i>	Striated Thornbill
<i>Malurus cyaneus</i>	Superb Fairy-wren
<i>Menura novaehollandiae</i>	Superb Lyrebird
<i>Podargus strigoides</i>	Tawny Frogmouth
<i>Daphoenositta chrysoptera</i>	Varied Sittella
<i>Sericornis frontalis</i>	White-browed Scrubwren
<i>Melithreptus lunatus</i>	White-naped Honeyeater
<i>Eurostopodus mystacalis</i>	White-throated

Birds	
Scientific name	Common name
	Nightjar
<i>Cormobates leucophaea</i>	White-throated Treecreeper
<i>Rhipidura leucophrys</i>	Willie Wagtail
<i>Leucosarcia melanoleuca</i>	Wonga Pigeon
<i>Caligavis chrysops</i>	Yellow-faced Honeyeater
<i>Neosericornis citreogularis</i>	Yellow-throated Scrubwren
<i>Lichenostomus melanops</i>	Yellow-tufted Honeyeater

Mammals	
Scientific name	Common name
<i>Antechinus agilis</i>	Agile Antechinus
<i>Vombatus ursinus</i>	Bare-nosed Wombat
<i>Rattus rattus</i>	Black Rat
<i>Antechinus stuartii</i>	Brown Antechinus
<i>Trichosurus sp.</i>	brush-tail possum
<i>Rattus fuscipes</i>	Bush Rat
<i>Chalinolobus morio</i>	Chocolate Wattle Bat
<i>Trichosurus vulpecula</i>	Common Brushtail Possum
<i>Micronomus norfolkensis</i>	Eastern Coastal Free-tailed Bat
<i>Ozimops ridei</i>	Eastern Free-tailed Bat
<i>Macropus giganteus</i>	Eastern Grey Kangaroo

Mammals	
Scientific name	Common name
<i>Rhinolophus megaphyllus</i>	Eastern Horseshoe-bat
<i>Vulpes vulpes</i>	Fox
<i>Capra hircus</i>	Goat
<i>Nyctophilus gouldi</i>	Gould's Long-eared Bat
<i>Chalinolobus gouldii</i>	Gould's Wattle Bat
<i>Petauroides volans</i>	Greater Glider
<i>Macropus sp.</i>	kangaroo / wallaby
<i>Miniopterus orianae oceanensis</i>	Large Bent-winged Bat
<i>Chalinolobus dwyeri</i>	Large-eared Pied Bat
<i>Vespadelus vulturnus</i>	Little Forest Bat
<i>Perameles nasuta</i>	Long-nosed Bandicoot
<i>Potorous tridactylus</i>	Long-nosed Potoroo

Mammals	
Scientific name	Common name
<i>Rattus sp.</i>	rat
<i>Notamacropus rufogriseus</i>	Red-necked Wallaby
<i>Trichosurus caninus</i>	Short-eared Possum
<i>Vespadelus regulus</i>	Southern Forest Bat
<i>Dasyurus maculatus</i>	Spotted-tailed Quoll
<i>Petaurus breviceps</i>	Sugar Glider
<i>Wallabia bicolor</i>	Swamp Wallaby
<i>Antechinus sp.</i>	Unidentified Antechinus
<i>Vespadelus sp.</i>	Unidentified Eptesicus
<i>Macropod sp.</i>	unidentified macropod
<i>Austronomus australis</i>	White-striped Freetail-bat
<i>Petaurus australis</i>	Yellow-bellied Glider

Fish and crustaceans	
Scientific name	Common name
Retropinna semoni	Australian Smelt
Galaxias maculatus	Common Jollytail
Gobiomorphus coxii	Cox's gudgeon

Fish and crustaceans	
Scientific name	Common name
Gobiomorphus australis	Striped Gudgeon
Hyridella depressa	Depressed Mussel
Panacela lewinae	Lewin's bag-shelter moth

Fish and crustaceans	
Scientific name	Common name
Paratya australiensis	Australian Paratya
Australatya striolata	Riffle Shrimp



## APPENDIX 5 – APPROVAL AND AMENDMENTS FROM PREVIOUS VERSION

In line with section 25 of the *Forestry Act 2012*, flora reserve working plans and any amendments must be approved by the Minister. This plan forms part of the working plans for each of the individual flora reserves listed in section 6.

This plan was approved by The Hon. Tara Moriarty MLC, Minister for Agriculture, Minister for Regional New South Wales and Minister for Western New South Wales

Date of approval: 6/9/23

Version	Changes	Approval details
2.0	<ul style="list-style-type: none"><li>» Reference to the <i>Flora Reserve Plan: Background and General Management</i></li><li>» Formatting updated</li><li>» Change</li></ul>	<ul style="list-style-type: none"><li>» The Hon. Tara Moriarty MLC, Minister for Agriculture, Minister for Regional New South Wales and Minister for Western New South Wales, 6/9/23</li></ul>