

NO ENTRY

FORESTRY REGULATION 2022 - CLAUSES 6 & 7 CLOSURE OF PART TUGGOLO STATE FOREST

FORESTRY CORPORATION OF NEW SOUTH WALES HAS RESERVED THE AREA DESCRIBED BELOW AS 'THE CLOSED AREA' FOR THE EXCLUSIVE USE OF ITS CONTRACTORS, SUPPORT AND SUPERVISING STAFF CARRYING OUT HARVESTING OPERATIONS DURING THE PERIOD DESCRIBED BELOW AS 'THE CLOSURE PERIOD'.

THE ENTRY OF ALL PERSONS INTO THE CLOSED AREA DURING THE CLOSURE PERIOD, OTHER THAN PERSONS AUTHORISED IN WRITING BY THE FORESTRY CORPORATION OF NEW SOUTH WALES, IS HEREBY PROHIBITED. PERSONS ENTERING INTO OR REMAINING IN THE CLOSED AREA DURING THE CLOSURE PERIOD WITHOUT FORESTRY CORPORATION OF NEW SOUTH WALES' PERMISSION ARE LIABLE TO PROSECUTION, MAXIMUM PENALTY \$2,200 PER OFFENCE.

DESCRIPTION OF THE CLOSED AREAS

That part of Tuggolo State Forest No. 312 enclosed by the mapped boundary:

- A. commencing near the intersection of Rubys Knob Road and the State forest/Nowendoc National Park boundary (marked Point 'A' on the map); then, in a clockwise direction around the Closed Area,
- B. in a generally easterly direction following Nowendoc National Park boundary to the intersection with an unnamed creek (marked Point 'B' on the map); then,
- C. in a generally southerly, then easterly direction following the unnamed creek, to the intersection with other unnamed creek (marked Point 'C' on the map); then,
- D. in a generally westerly direction following the unnamed creek to the intersection the intersection of Dump 14 Trail and Rubys Knob Road (marked Point 'D' on the map); then,
- E. in a generally westerly direction following other unnamed creek to the State forest/private property boundary (marked Point 'E' on the map),
- F. then, in a generally north-westerly, then easterly, then northerly direction, following the State forest/private property boundary to the junction Rubys Knob Road and back to Point 'A' on the map.

To be clear, between Points 'A' and 'D', Rubys Knob Road remains open only to authorised through vehicle traffic. Authorised vehicles must not stop or linger along this section of the road (as mapped) due to safety risks arising from forest operations.

DESCRIPTION OF THE CLOSURE PERIOD

Between 7:00 am Monday 25th November 2024 and 7:00 am Monday 30th June 2025.

BY ORDER OF FORESTRY CORPORATION OF NEW SOUTH WALES, by its delegate:



Dean Caton,
REGIONAL MANAGER NORTHERN, HARDWOOD FORESTS DIVISION

Scale 1:25,000
Datum: GDA94

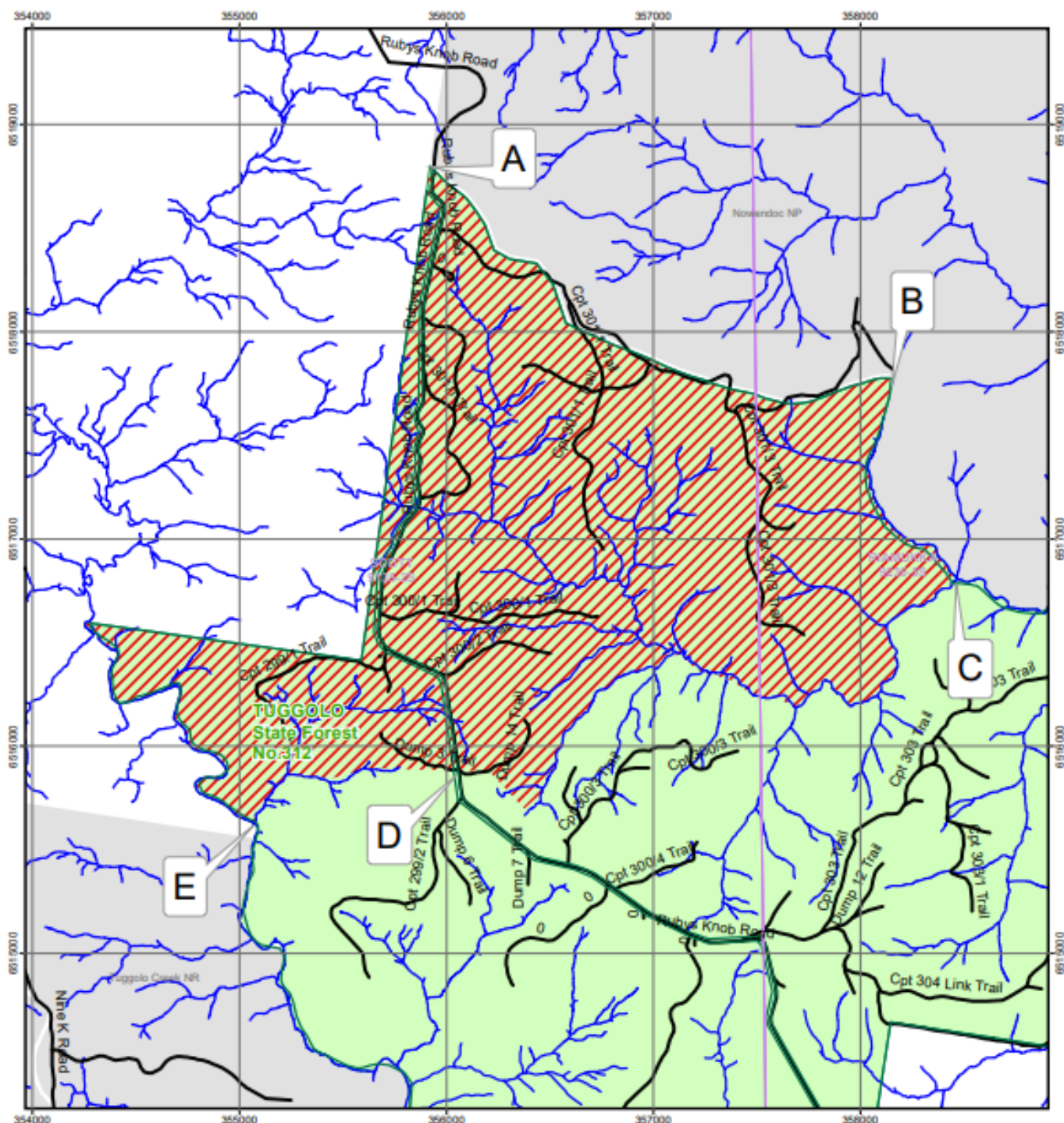
CLOSED AREA

FORESTRY REGULATION 2022 SECTIONS 6 & 7

TUGGOLO STATE FOREST NO. 312



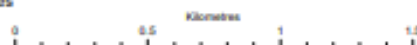
Map Sheets:
1:25,000 SCOTT 9135-25, RAMUKKA 9235-35
1:100,000 MUNDLE 9135, YARROWITCH 9235



Legend



This map is indicative only.
See supporting document with
description of exclusion area boundaries



© Crown Copyright 2013. The information and data contained in this map is to the best of Forestry Corporation's belief, true and correct at the time of publication. However, changes in circumstances after the publication may impact upon the accuracy of the material. No warranty or guarantee is provided by the State of New South Wales, Forestry Corporation and its employees and agents and no liability is accepted for any loss or damage, costs or expenses resulting from the use or reliance upon the information and data contained in this map.