



MIDDLE CREEK FLORA RESERVE NO. 65

SITE SPECIFIC WORKING PLAN

Table of Contents

1. Details of the Reserve	3
1.1 Location	3
1.2 Key Attributes of the Reserve	3
1.3 General Description	3
1.4 History	4
1.5 Current Usage	5
2. System of Management	5
2.1 Objectives of Management	5
2.2 Management Strategies	5
2.3 Management Responsibility	7
2.4 Monitoring, Reporting and Review	7
3. List of Appendices	7
Appendix 1 – Locality Map	8
Appendix 2 – Topographic & Forest Type Map	9
Appendix 3 – Flora Species List	10
Appendix 4 – Fauna Species List	14
Appendix 5 – Approval and Amendments from previous version	16

This site-specific working describes the important values of an individual flora reserve and identifies site-specific priorities for management. The plan is to be read in conjunction with the Flora Reserve Plan: Background and General Management document, which identifies Forestry Corporation's broad objectives and strategies for managing flora reserves. These two documents together form the flora reserve working plan in line with the requirements of section 25 of the *Forestry Act 2012*.

1. DETAILS OF THE RESERVE

1.1 LOCATION

Middle Creek Flora Reserve is located in Marengo State Forest, about 40 kilometres northwest of the town of Dorrigo. The boundaries of the reserve are marked by a logging road and an unnamed gully in the north, Middle Creek in the east, Reccy Gully in the south, and Grafton Range Road in the west. See Locality Map in Appendix 1.

1.2 KEY ATTRIBUTES OF THE RESERVE

Under the *Forestry Act 2012*, flora reserves are set apart for the preservation of native flora.

The reserve possesses the following identified attributes that are to be protected:

- » gully areas carrying good quality stands of subtropical rainforest with Yellow Carabeen (*Sloanea woollsii*) and Black Booyong (*Tarrietia actinophylla*)
- » warm temperate rainforest with Coachwood (*Ceratopetalum apetalum*) and Sassafras (*Doryphora sassafras*)
- » representative examples of forest ecosystems in the area.
- » Aboriginal archaeological heritage sites.

1.3 GENERAL DESCRIPTION

Area

The reserve has an area of about 157 hectares.

Topography

Middle Creek Flora Reserve can be generally described as a moderate to steep sided slope of the Middle Creek basin, dissected by two gullies to form three spur ridges running west to east from the Grafton Range towards Middle Creek.

The reserve has an easterly aspect from the Grafton Range within an elevational range of 810 to 1090 metres in the north o 910 to 1170 metres in the south. The steepest slope occurs in the northern part of the reserve. Refer to Appendix 2 for topographic map.

Geology and Soils

There is one major soil type within the reserve. It is a light coloured red podzolic of only moderate fertility, with a high silica and potassium content, derived from the Chaelundi Complex leucoadamellites and adamellites. The rock type gives rise to an abundance of 'granite' type boulders of all sizes with the reserve.

Flora Reserve Plan: Middle Creek Site Specific Working Plan	Version No.: 2	Page 3 of 16
Document ID: D22/5362	Owner: Senior Manager Forest Stewardship	Issue date: 6/9/23
		Review date: 6/9/33

WARNING: a printed copy of this document may be uncontrolled. Please verify this is the latest version prior to use.

Climate

The area has a Warm Temperate Maritime climate with a summer/autumn rainfall peak. Frosts occur in winter.

Vegetation/Flora and Fauna

The major feature of the reserve is the subtropical/warm temperate rainforest occupying nearly half of the reserve area and representing an excellent example of this high-quality rainforest type. This forest is an intermediate sub form between the subtropical rainforest, characterised by Yellow Carabeen (*Sloanea woollsii*) and Black Booyong (*Tarrietia actinophylla*), and the warm temperate rainforest of Coachwood (*Ceratopetalum apetalum*), Sassafras (*Doryphora sassafras*), and Prickly Ash (*Orites excelsa*). This rainforest type has an overstorey of the subtropical species, but with a well-developed medium tree layer of warm temperate species.

Along the southern boundary, warm temperate rainforest occurs as a fringe on the northern side of Reccy Gully. It occupies a drier and more exposed site, where it must withstand considerable extremes of climate as a closed forest.

The upper slopes in the west and north of the reserve support a wet sclerophyll forest of Sydney Blue Gum – Tallowwood (*Eucalyptus saligna* – *E. microcorys*) type and New England Blackbutt – Silvertop Stringybark (*E. andrewsii* ssp *campanulata* – *E. laevopinea*) type.

Overall, the pattern of vegetation within the reserve relates to frequency and severity of fire occurrence, soil moisture conditions and exposure, rather than changes in the inherently low fertility soils. Appendix 2 Map shows the various Forest Types and their locations within the Reserve.

Swamp wallabies, Pademelons, New Holland Mouse and Greater Gliders have all been recorded within the reserve. Appendices 3 and 4 outline a list of flora and fauna species known to occur within the Reserve.

1.4 HISTORY

Aboriginal History and Cultural Values

Middle Creek Flora Reserve is situated within the traditional lands of the Gumbaynggir people and there are a number of Aboriginal cultural heritage sites located within the surrounding area. The area is part of a cultural landscape, used for everyday and ceremonial activities including seasonal food and resource gathering in association with Middle Creek, and as a travel route from the mountains to the coast. Tangible aspects of these activities are evident as walking tracks and scar trees, the remains of camp sites with stone tools (isolated stone artefact and artefact scatters) as well as sacred features and places created at the beginning of time.

Post European Settlement

Harvesting and grazing

There is no evidence of logging of brushwoods or hardwoods within the reserve.

The reserve was within the area covered by a grazing permit. Grazing was limited to the upper slopes only following fires and was not continuous from year to year. The Permit ended in 2011 and was not renewed. There is insignificant impact on the reserve from grazing under this Permit.

Tracks and trails

Grafton Range Road forms part of the western boundary, whilst a logging track forms part of the northern boundary. A side cut snig track intrudes into the reserve to the south of the boundary logging track, this was not used for logging and has revegetated naturally. There was a fire trail traversing the middle ridge

Flora Reserve Plan: Middle Creek Site Specific Working Plan	Version No.: 2	Page 4 of 16
Document ID: D22/5362	Owner: Senior Manager Forest Stewardship	Issue date: 6/9/23
		Review date: 6/9/33

WARNING: a printed copy of this document may be uncontrolled. Please verify this is the latest version prior to use.

of the reserve, but it is now heavily revegetated and has returned to a condition similar to the original stand.

Fire

Fire has been part of the Australian landscape for at least the last 60,000 years and most forests have experienced fire multiple times over many centuries. The reserve was impacted by wildfire during in the 2019/2020 summer season, with medium to high intensity recorded in sections, resulting in the canopy being partially burnt in discrete areas.

Establishment of Flora Reserve

The area was gazetted as Middle Creek Flora Reserve No. 80025 on 14th December 1984. In a general renumbering of Flora Reserves in the Government Gazette of 24th July 1987, the reserve became Middle Creek Flora Reserve No. 65.

1.5 CURRENT USAGE

The reserve receives limited recreational usage, primarily by visitors driving past the reserve on Grafton Range Road. No recreational facilities are provided at the Reserve and there is no intention to develop any facilities.

2. SYSTEM OF MANAGEMENT

2.1 OBJECTIVES OF MANAGEMENT

The objects of management will be to:

- » enhance the ecological quality of stands of subtropical rainforest with Yellow Carabeen and Black Booyong and warm temperate rainforest with Coachwood and Sassafras
- » protect Aboriginal archaeological heritage sites
- » preserve native flora and fauna species, including habitat for the New Holland Mouse and Greater Glider
- » maintain reference stands and provide for limited scientific study consistent with the protection of the area, including the development of an understanding of successional growth processes after disturbance and as a reference for assessing the effects of alternative land use in surrounding areas
- » protect Aboriginal cultural heritage sites and cultural values
- » provide for the continued protection of the reserve and neighboring areas from damaging wildfire and other agents.

2.2 MANAGEMENT STRATEGIES

The broad management strategies and related actions to preserve native flora and improve the value and extent of habitat in State forest flora reserves are detailed in the Flora Reserve Management Plan: Background and General Management document, which is to be read in conjunction with this plan. Specific additional management strategies applied in this flora reserve include:

- » Property maintenance, through:

Flora Reserve Plan: Middle Creek Site Specific Working Plan	Version No.: 2	Page 5 of 16
Document ID: D22/5362	Owner: Senior Manager Forest Stewardship	Issue date: 6/9/23
		Review date: 6/9/33

WARNING: a printed copy of this document may be uncontrolled. Please verify this is the latest version prior to use.

- establishment and maintenance of appropriate fences, gates and signs
 - removal of unnecessary fencing
 - maintenance of roads and trails
 - restricting visitor use to walking trails for educational activities.
- » Conservation and improvement of habitat, through:
- maintenance of native vegetation, which may include manipulation by mechanical means for habitat improvement
 - regeneration of any cleared or degraded land, through plantings and natural recruitment
 - weed control
 - removal of rubbish
 - management of human disturbance, including harvesting and other forest product operations
 - retention of dead timber and other habitat resources
 - management of fire, including prescribed or hazard reduction burning.
- » pest animal control.

Cultural Values

Explore opportunities for Aboriginal community involvement in managing the flora reserve.

Weeds

The vegetation within the flora reserve is in very healthy state with no obvious weeds present. As far as reasonably practicable, exotic species will be controlled, as detailed in section 2.4.

Trail maintenance

Maintenance of roads and trails is important to enable access to the forest for forest management, firefighting, tourism and recreation. Poorly maintained roads can also transport significant levels of sediment, increasing the turbidity of water within creeks. This consequently reduces habitat quality and aquatic biodiversity and can take significant periods of time to recover.

Permitted activities

Under the Forest Management Zoning (FMZ) system, Middle Creek Flora Reserve is zoned FMZ 1 and therefore contributes to the dedicated reserve system in the Upper North East Region. Management will be consistent with the requirements of JANIS dedicated reserves.

The latest operational guide detailing information not permitted in FMZ1 is published on the Forestry Corporation website.

The following activities may be permitted subject to standard conditions approved by the delegated Manager and consistent with the management objectives for the reserve, codes of practice, forest practices/operational circulars, protocols, licenses and management/recovery plans:

- » scientific studies (e.g., fauna surveys including trapping)
- » maintenance of existing roads and fire trails
- » maintenance of existing recreation facilities and upgrading where necessary to keep pace with demand while protecting the attributes of the reserve
- » limited tree and or limb removal for safety, viewing or construction of facilities in areas used for recreation

Flora Reserve Plan: Middle Creek Site Specific Working Plan	Version No.: 2	Page 6 of 16
Document ID: D22/5362	Owner: Senior Manager Forest Stewardship	Issue date: 6/9/23
		Review date: 6/9/33

WARNING: a printed copy of this document may be uncontrolled. Please verify this is the latest version prior to use.

- » pest animal and weed control
- » general access for activities such as bush walking, photography and nature study
- » beekeeping (existing set-down sites may be used)
- » Aboriginal use of forest products consistent with the maintenance of the conservation attributes to be protected in the reserve
- » fire management will be undertaken in a manner consistent with maintaining the health of forest ecosystems.

The following activities may only be permitted with special conditions:

- » Construction of new roads. Construction will only be permitted in exceptional instances and consistent with the following principles:
 - no practical alternative is available
 - the attributes of the Reserve will not be significantly affected by the road or fire trail
 - opportunity is provided for public comment on the proposal, obtained through advertising in the local newspaper
 - Ministerial approval is given for the proposal.

Mining

The reserve was exempted from the provisions of the *Mining Act 1992* by notice in the Government Gazette of 14th February 1986.

2.3 MANAGEMENT RESPONSIBILITY

The reserve will be administered by Forestry Corporation of NSW's Hardwood Forests Division, with the authority for decision making delegated to the Senior Manager Forest Stewardship or equivalent level manager.

2.4 MONITORING, REPORTING AND REVIEW

Forestry Corporation will monitor changes to the key attributes of the Reserve and will review the effectiveness of the management strategies designed to protect those attributes and to achieve the management objectives.

The results of this monitoring, review and management response will be included in annual reporting processes.

The provisions of this working plan will be amended, if necessary, in light of the results of the monitoring program and / or legislative change and with the approval of the Minister administering the *Forestry Act 2012*.

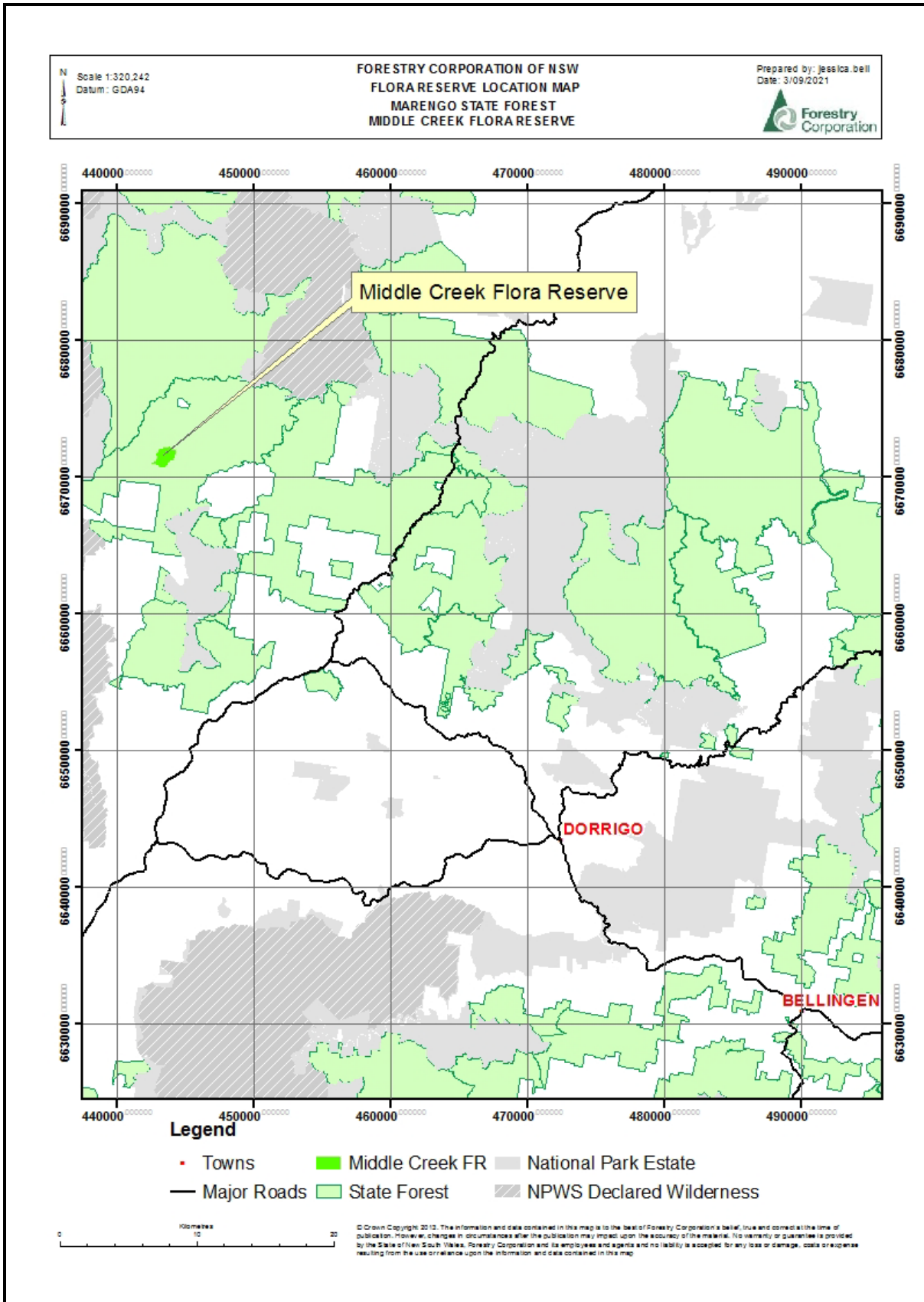
3. LIST OF APPENDICES

- » Appendix 1 – Locality Map
- » Appendix 2 – Topographic and Forest Type Map
- » Appendix 3 – Flora Species List
- » Appendix 4 – Fauna Species List
- » Appendix 5 – Images

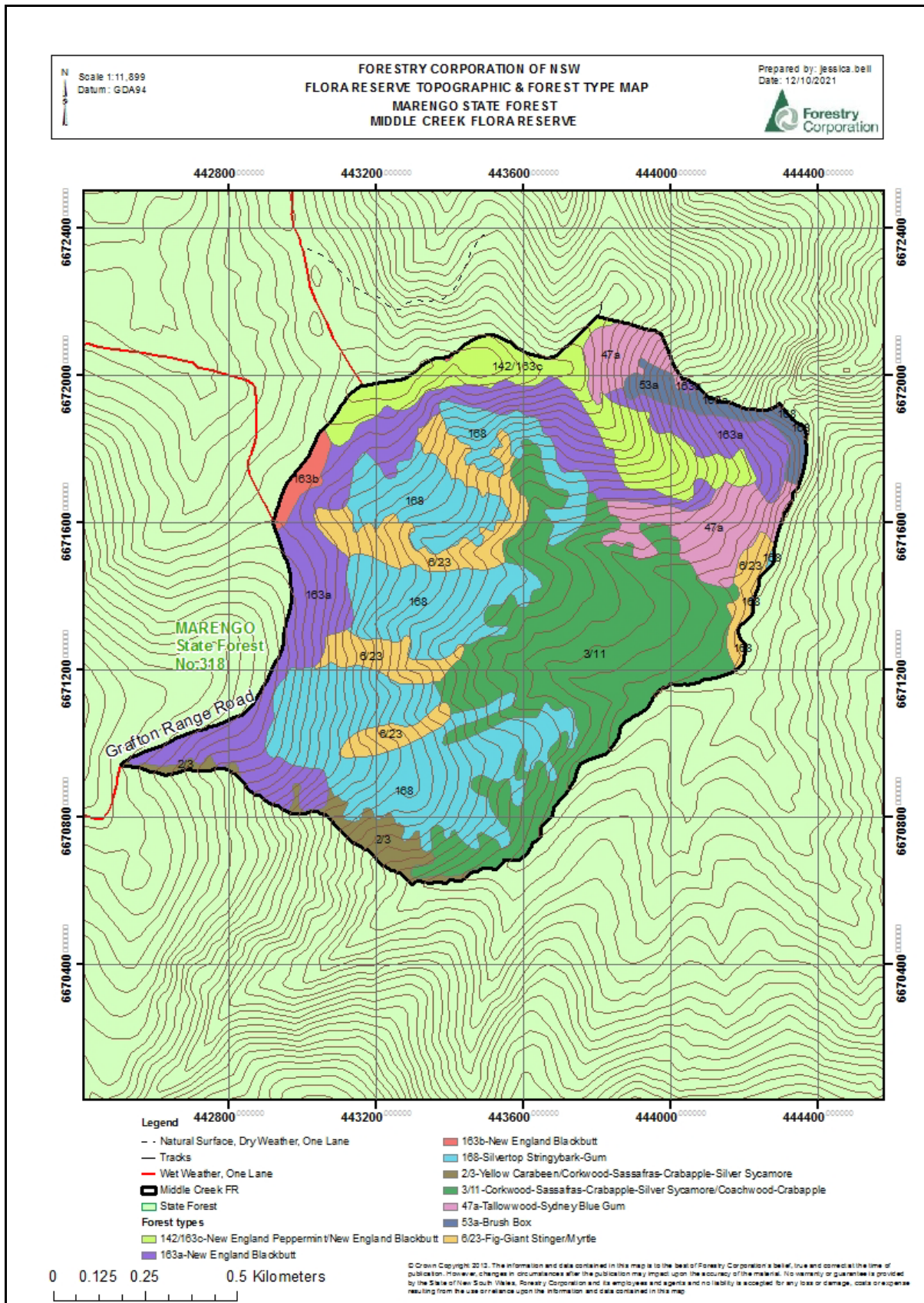
Flora Reserve Plan: Middle Creek Site Specific Working Plan	Version No.: 2	Page 7 of 16
Document ID: D22/5362	Owner: Senior Manager Forest Stewardship	Issue date: 6/9/23
		Review date: 6/9/33

WARNING: a printed copy of this document may be uncontrolled. Please verify this is the latest version prior to use.

APPENDIX 1 – LOCALITY MAP



APPENDIX 2 – TOPOGRAPHIC & FOREST TYPE MAP



APPENDIX 3 – FLORA SPECIES LIST

Flora found within 5000m of flora reserve, desktop search undertaken September 2021

Scientific name	Scientific name	Scientific name
<i>Abrophyllum ornans</i>	<i>Arthropteris beckleri</i>	<i>Capillipedium parviflorum</i>
<i>Acacia binervata</i>	<i>Arthropteris tenella</i>	<i>Capparis arborea</i>
<i>Acacia dealbata</i> subsp. <i>dealbata</i>	<i>Asplenium attenuatum</i>	<i>Carex breviculmis</i>
<i>Acacia elongata</i>	<i>Asplenium australasicum</i>	<i>Carex longebrachiata</i>
<i>Acacia falciformis</i>	<i>Asplenium bulbiferum</i> subsp. <i>gracillimum</i>	<i>Centella asiatica</i>
<i>Acacia fimbriata</i>	<i>Asplenium flaccidum</i> subsp. <i>flaccidum</i>	<i>Cephalalaria cephalobotrys</i>
<i>Acacia floribunda</i>	<i>Asplenium polyodon</i>	<i>Ceratopetalum apetalum</i>
<i>Acacia implexa</i>	<i>Austrobuxus swainii</i>	<i>Cheilanthes distans</i>
<i>Acacia irrorata</i>	<i>Austrostipa rudis</i> subsp. <i>nervosa</i>	<i>Cheilanthes sieberi</i> subsp. <i>sieberi</i>
<i>Acacia maidenii</i>	<i>Axonopus fissifolius</i>	<i>Chiloglottis sphyrnoides</i>
<i>Acacia melanoxylon</i>	<i>Baloghia inophylla</i>	<i>Chrysocephalum apiculatum</i>
<i>Acianthus exsertus</i>	<i>Banksia integrifolia</i>	<i>Cinnamomum virens</i>
<i>Acianthus fornicatus</i>	<i>Berberidopsis beckleri</i>	<i>Cirsium vulgare</i>
<i>Acmena smithii</i>	<i>Bidens pilosa</i>	<i>Cissus antarctica</i>
<i>Acronychia oblongifolia</i>	<i>Billardiera scandens</i>	<i>Cissus hypoglauca</i>
<i>Acronychia pubescens</i>	<i>Blechnum cartilagineum</i>	<i>Citronella moorei</i>
<i>Acrotriche aggregata</i>	<i>Blechnum minus</i>	<i>Claoxylon australe</i>
<i>Adiantum aethiopicum</i>	<i>Blechnum neohollandicum</i>	<i>Clematis aristata</i>
<i>Adiantum formosum</i>	<i>Blechnum nudum</i>	<i>Clematis glycinoides</i>
<i>Adiantum hispidulum</i>	<i>Blechnum patersonii</i>	<i>Conyza bonariensis</i>
<i>Ajuga australis</i>	<i>Blechnum wattsii</i>	<i>Conyza parva</i>
<i>Akania bidwillii</i>	<i>Boronia polygalifolia</i>	<i>Conyza</i> spp.
<i>Alangium villosum</i> subsp. <i>polyosmoides</i>	<i>Bossiaea buxifolia</i>	<i>Coprosma quadrifida</i>
<i>Alectryon subcinereus</i>	<i>Botrychium australe</i>	<i>Cordyline petiolaris</i>
<i>Allocasuarina littoralis</i>	<i>Brachychiton acerifolius</i>	<i>Cordyline stricta</i>
<i>Allocasuarina torulosa</i>	<i>Brachyscome</i> spp.	<i>Coronidium elatum</i>
<i>Alyxia ruscifolia</i>	<i>Breynia oblongifolia</i>	<i>Coronidium scorpioides</i>
<i>Amyema congener</i> subsp. <i>congener</i>	<i>Bulbophyllum shepherdii</i>	<i>Corymbia maculata</i>
<i>Amyema pendula</i>	<i>Bursaria spinosa</i>	<i>Corymbia variegata</i>
<i>Aneilema acuminatum</i>	<i>Caesia parviflora</i> var. <i>parviflora</i>	<i>Crotalaria montana</i> var. <i>angustifolia</i>
<i>Angophora subvelutina</i>	<i>Caladenia catenata</i>	<i>Cryptocarya bidwillii</i>
<i>Anthosachne scabra</i>	<i>Caldcluvia paniculosa</i>	<i>Cryptocarya foveolata</i>
<i>Aphanopetalum resinolum</i>	<i>Callicoma serratifolia</i>	<i>Cryptocarya glaucescens</i>
<i>Arachniodes aristata</i>	<i>Calochilus gracillimus</i>	<i>Cryptocarya microneura</i>
<i>Argyrodendron actinophyllum</i>	<i>Calochilus robertsonii</i>	<i>Cryptocarya rigida</i>
<i>Aristotelia australasica</i>	<i>Calochilus</i> spp.	<i>Cryptostylis leptochila</i>
<i>Arthropodium milleflorum</i>	<i>Calochlaena dubia</i>	<i>Cupaniopsis baileyana</i>
<i>Arthropodium</i> sp. B		<i>Cuttsia viburnea</i>
		<i>Cyathea australis</i>

Scientific name
<i>Cyathea leichhardtiana</i>
<i>Cymbopogon refractus</i>
<i>Cyperus brevifolius</i>
<i>Cyperus lucidus</i>
<i>Cyperus sphaeroideus</i>
<i>Cyrtostylis reniformis</i>
<i>Daphnandra apatela</i>
<i>Daphnandra micrantha</i>
<i>Daucus glochidiatus</i>
<i>Davallia solida</i> var. <i>pyxidata</i>
<i>Dendrobium fairfaxii</i>
<i>Dendrobium pugioniforme</i>
<i>Dendrobium speciosum</i>
<i>Dendrobium teretifolium</i>
<i>Dendrocide excelsa</i>
<i>Denhamia bilocularis</i>
<i>Denhamia celastroides</i>
<i>Denhamia pittosporoides</i> subsp. <i>pittosporoides</i>
<i>Desmodium gunnii</i>
<i>Desmodium rhytidophyllum</i>
<i>Desmodium varians</i>
<i>Deyeuxia mckiei</i>
<i>Deyeuxia parviseta</i>
<i>Dianella caerulea</i>
<i>Dianella caerulea</i> var. <i>caerulea</i>
<i>Dianella longifolia</i> var. <i>stenophylla</i>
<i>Dianella revoluta</i>
<i>Dichelachne inaequiglumis</i>
<i>Dichelachne micrantha</i>
<i>Dichelachne rara</i>
<i>Dichondra repens</i>
<i>Dicksonia antarctica</i>
<i>Dictymia brownii</i>
<i>Digitaria didactyla</i>
<i>Dioscorea transversa</i>
<i>Diospyros australis</i>
<i>Diospyros pentamera</i>
<i>Diplazium australe</i>
<i>Diploglottis australis</i>
<i>Dipodium punctatum</i>
<i>Dodonaea megazyga</i>
<i>Doryphora sassafras</i>

Scientific name
<i>Drymophila moorei</i>
<i>Dysoxylum fraserianum</i>
<i>Echinopogon caespitosus</i>
<i>Echinopogon caespitosus</i> var. <i>caespitosus</i>
<i>Echinopogon ovatus</i>
<i>Ehretia acuminata</i> var. <i>acuminata</i>
<i>Elaeocarpus holopetalus</i>
<i>Elaeocarpus kirtonii</i>
<i>Elaeocarpus reticulatus</i>
<i>Elatostema reticulatum</i>
<i>Embelia australiana</i>
<i>Emmenosperma alphonoioides</i>
<i>Endiandra crassiflora</i>
<i>Endiandra muelleri</i>
<i>Endiandra sieberi</i>
<i>Entolasia marginata</i>
<i>Entolasia stricta</i>
<i>Epilobium billardierianum</i>
<i>Epilobium billardierianum</i> subsp. <i>cinereum</i>
<i>Eriochilus cucullatus</i>
<i>Eucalyptus amplifolia</i>
<i>Eucalyptus amplifolia</i> subsp. <i>sessiliflora</i>
<i>Eucalyptus biturbinata</i>
<i>Eucalyptus bridgesiana</i>
<i>Eucalyptus brunnea</i>
<i>Eucalyptus caliginosa</i>
<i>Eucalyptus cameronii</i>
<i>Eucalyptus campanulata</i>
<i>Eucalyptus carnea</i>
<i>Eucalyptus dalrympleana</i> subsp. <i>heptantha</i>
<i>Eucalyptus dorrigoensis</i>
<i>Eucalyptus eugenioides</i>
<i>Eucalyptus laevopinea</i>
<i>Eucalyptus microcorys</i>
<i>Eucalyptus moluccana</i>
<i>Eucalyptus nobilis</i>
<i>Eucalyptus obliqua</i>
<i>Eucalyptus radiata</i> subsp. <i>sejuncta</i>
<i>Eucalyptus resinifera</i>

Scientific name
<i>Eucalyptus resinifera</i> subsp. <i>hemilampra</i>
<i>Eucalyptus saligna</i>
<i>Eucalyptus signata</i>
<i>Eucalyptus tereticornis</i>
<i>Euchiton involucratus</i>
<i>Euchiton japonicus</i>
<i>Euchiton sphaericus</i>
<i>Eupomatia laurina</i>
<i>Eustrephus latifolius</i>
<i>Exocarpos strictus</i>
<i>Ficus coronata</i>
<i>Fimbristylis dichotoma</i>
<i>Gahnia melanocarpa</i>
<i>Galinsoga parviflora</i>
<i>Galium binifolium</i>
<i>Galium ciliare</i>
<i>Galium propinquum</i>
<i>Gamochaeta purpurea</i>
<i>Geissois benthamiana</i>
<i>Geitonoplesium cymosum</i>
<i>Genoplesium nudum</i>
<i>Geranium homeanum</i>
<i>Geranium potentilloides</i>
<i>Geranium solanderi</i>
<i>Geranium solanderi</i> var. <i>solanderi</i>
<i>Glycine clandestina</i>
<i>Glycine microphylla</i>
<i>Glycine tabacina</i>
<i>Gonocarpus micranthus</i>
<i>Gonocarpus oreophilus</i>
<i>Gonocarpus tetragynus</i>
<i>Gonocarpus teucroides</i>
<i>Goodenia hederacea</i> subsp. <i>hederacea</i>
<i>Goodenia rotundifolia</i>
<i>Goodenia</i> spp.
<i>Guilfoylia monostylis</i>
<i>Guioa semiglauca</i>
<i>Gymnostachys anceps</i>
<i>Gynochthodes jasminoides</i>
<i>Hackelia latifolia</i>
<i>Hakea eriantha</i>
<i>Haloragis heterophylla</i>

Scientific name
<i>Hardenbergia violacea</i>
<i>Hedycarya angustifolia</i>
<i>Helichrysum rutidolepis</i>
<i>Hibbertia aspera</i>
<i>Hibbertia dentata</i>
<i>Hibbertia riparia</i>
<i>Hibbertia scandens</i>
<i>Hibbertia vestita</i>
<i>Histiopteris incisa</i>
<i>Hovea heterophylla</i>
<i>Hovea linearis</i>
<i>Hydrocotyle acutiloba</i>
<i>Hydrocotyle geraniifolia</i>
<i>Hydrocotyle laxiflora</i>
<i>Hydrocotyle pedicellosa</i>
<i>Hydrocotyle sibthorpioides</i>
<i>Hydrocotyle tripartita</i>
<i>Hymenosporum flavum</i>
<i>Hypericum gramineum</i>
<i>Hypericum japonicum</i>
<i>Hypochaeris glabra</i>
<i>Hypochaeris radicata</i>
<i>Hypolepis glandulifera</i>
<i>Hypolepis muelleri</i>
<i>Hypoxis hygrometrica</i> var. <i>villosisepala</i>
<i>Imperata cylindrica</i>
<i>Jacksonia scoparia</i>
<i>Juncus subsecundus</i>
<i>Juncus usitatus</i>
<i>Kennedia rubicunda</i>
<i>Lagenifera stipitata</i>
<i>Lagenophora gracilis</i>
<i>Lastreopsis acuminata</i>
<i>Lastreopsis decomposita</i>
<i>Lastreopsis</i> spp.
<i>Lepidosperma laterale</i>
<i>Leptospermum polygalifolium</i>
<i>Lespedeza juncea</i> subsp. <i>sericea</i>
<i>Leucopogon lanceolatus</i>
<i>Leucopogon lanceolatus</i> var. <i>lanceolatus</i>
<i>Libertia paniculata</i>
<i>Lindsaea linearis</i>

Scientific name
<i>Lindsaea microphylla</i>
<i>Linospadix monostachyos</i>
<i>Litsea reticulata</i>
<i>Lobelia gibbosa</i>
<i>Lobelia pedunculata</i>
<i>Lobelia purpurascens</i>
<i>Lobelia trigonocaulis</i>
<i>Logania pusilla</i>
<i>Lomandra filiformis</i>
<i>Lomandra filiformis</i> subsp. <i>coriacea</i>
<i>Lomandra filiformis</i> subsp. <i>filiformis</i>
<i>Lomandra longifolia</i>
<i>Lomandra multiflora</i> subsp. <i>multiflora</i>
<i>Lomandra spicata</i>
<i>Lomatia fraseri</i>
<i>Lomatia silaifolia</i>
<i>Lophostemon confertus</i>
<i>Luzula flaccida</i>
<i>Marsdenia rostrata</i>
<i>Melicope hayesii</i>
<i>Melicope micrococca</i>
<i>Melodinus australis</i>
<i>Mentha diemenica</i>
<i>Microlaena stipoides</i>
<i>Microlaena stipoides</i> var. <i>stipoides</i>
<i>Microsorium pustulatum</i>
<i>Microsorium scandens</i>
<i>Microtis</i> spp.
<i>Modiola caroliniana</i>
<i>Muellerina celastroides</i>
<i>Myoporum betcheanum</i>
<i>Myoporum montanum</i>
<i>Myrsine variabilis</i>
<i>Notelaea longifolia</i>
<i>Notelaea</i> sp. A
<i>Notelaea venosa</i>
<i>Olearia flocktoniae</i>
<i>Opercularia aspera</i>
<i>Opercularia diphylla</i>
<i>Opercularia hispida</i>
<i>Oplismenus aemulus</i>

Scientific name
<i>Oplismenus imbecillis</i>
<i>Orites excelsus</i>
<i>Oxalis chnoodes</i>
<i>Oxalis radicata</i>
<i>Oxytes brachypoda</i>
<i>Ozothamnus diosmifolius</i>
<i>Ozothamnus rufescens</i>
<i>Palmeria scandens</i>
<i>Pandorea pandorana</i>
<i>Panicum pygmaeum</i>
<i>Panicum schinzii</i>
<i>Panicum simile</i>
<i>Parsonsia purpurascens</i>
<i>Parsonsia straminea</i>
<i>Pellaea falcata</i>
<i>Pellaea paradoxa</i>
<i>Pennantia cunninghamii</i>
<i>Peperomia tetraphylla</i>
<i>Persoonia conjuncta</i>
<i>Persoonia linearis</i>
<i>Persoonia media</i>
<i>Persoonia oleoides</i>
<i>Phytolacca octandra</i>
<i>Picris angustifolia</i>
<i>Picris angustifolia</i> subsp. <i>angustifolia</i>
<i>Pimelea ligustrina</i>
<i>Pimelea linifolia</i>
<i>Pimelea linifolia</i> subsp. <i>linifolia</i>
<i>Pimelea neo-anglica</i>
<i>Piper hederaceum</i> var. <i>hederaceum</i>
<i>Pittosporum multiflorum</i>
<i>Pittosporum revolutum</i>
<i>Pittosporum undulatum</i>
<i>Plantago debilis</i>
<i>Plantago varia</i>
<i>Platycerium bifurcatum</i>
<i>Plectranthus parviflorus</i>
<i>Poa labillardierei</i> var. <i>labillardierei</i>
<i>Poa queenslandica</i>
<i>Poa sieberiana</i>
<i>Poa sieberiana</i> var. <i>sieberiana</i>

Scientific name
<i>Poa spp.</i>
<i>Podolepis jaceoides</i>
<i>Podolobium ilicifolium</i>
<i>Pollia crispata</i>
<i>Polygala japonica</i>
<i>Polyosma cunninghamii</i>
<i>Polyscias elegans</i>
<i>Polyscias murrayi</i>
<i>Polyscias sambucifolia</i>
<i>Pomaderris ferruginea</i>
<i>Poranthera microphylla</i>
<i>Pothos longipes</i>
<i>Pseudognaphalium luteoalbum</i>
<i>Psychotria daphnoides</i>
<i>Psychotria loniceroides</i>
<i>Pteridium esculentum</i>
<i>Pteris comans</i>
<i>Pteris tremula</i>
<i>Pteris umbrosa</i>
<i>Pterostylis daintreana</i>
<i>Pterostylis longifolia</i>
<i>Pterostylis nutans</i>
<i>Pterostylis parviflora</i>
<i>Pultenaea spp.</i>
<i>Pyrrosia confluens</i> var. <i>confluens</i>
<i>Pyrrosia rupestris</i>
<i>Quintinia sieberi</i>
<i>Ranunculus lappaceus</i>
<i>Rhodamnia argentea</i>
<i>Rhodamnia rubescens</i>
<i>Ripogonum discolor</i>
<i>Rubus moluccanus</i> var. <i>trilobus</i>
<i>Rubus nebulosus</i>
<i>Rubus parvifolius</i>
<i>Rubus rosifolius</i>

Scientific name
<i>Rytidosperma longifolium</i>
<i>Salvia plebeia</i>
<i>Sarcochilus falcatus</i>
<i>Sarcopteryx stipata</i>
<i>Schizomeria ovata</i>
<i>Schoenus apogon</i>
<i>Senecio amygdalifolius</i>
<i>Senecio bipinnatisectus</i>
<i>Senecio diaschides</i>
<i>Senecio hispidulus</i>
<i>Senecio madagascariensis</i>
<i>Senecio prenanthoides</i>
<i>Setaria pumila</i>
<i>Sigesbeckia orientalis</i> subsp. <i>orientalis</i>
<i>Sloanea woollsii</i>
<i>Smilax australis</i>
<i>Solanum aviculare</i>
<i>Solanum densevestitum</i>
<i>Solanum inaequilaterum</i>
<i>Solanum nigrum</i>
<i>Solanum nobile</i>
<i>Solanum prinophyllum</i>
<i>Solanum stelligerum</i>
<i>Solenogyne bellioides</i>
<i>Sorghum leiocladum</i>
<i>Spiranthes australis</i>
<i>Sporobolus africanus</i>
<i>Stackhousia viminea</i>
<i>Sticherus lobatus</i>
<i>Streptothamnus moorei</i>
<i>Stylidium graminifolium</i>
<i>Swainsona galegifolia</i>
<i>Synoum glandulosum</i> subsp. <i>glandulosum</i>
<i>Syzygium crebrinerve</i>
<i>Syzygium oleosum</i>
<i>Tasmannia insipida</i>

Scientific name
<i>Tasmannia stipitata</i>
<i>Thelymitra aristata</i>
<i>Themeda triandra</i>
<i>Thysanotus tuberosus</i>
<i>Thysanotus tuberosus</i> subsp. <i>tuberosus</i>
<i>Trimenia moorei</i>
<i>Trochocarpa laurina</i>
<i>Trochocarpa montana</i>
<i>Trophis scandens</i>
<i>Tylophora paniculata</i>
<i>Tylophora woollsii</i>
<i>Urtica incisa</i>
<i>Vernonia cinerea</i>
<i>Vernonia cinerea</i> var. <i>cinerea</i>
<i>Vernonia cinerea</i> var. <i>lanata</i>
<i>Veronica calycina</i>
<i>Veronica plebeia</i>
<i>Vesselowskya rubifolia</i>
<i>Viola betonicifolia</i>
<i>Viola hederacea</i>
<i>Wahlenbergia gracilis</i>
<i>Wahlenbergia planiflora</i> subsp. <i>planiflora</i>
<i>Wahlenbergia stricta</i>
<i>Wahlenbergia stricta</i> subsp. <i>stricta</i>
<i>Wilkiea huegeliana</i>
<i>Xanthorrhoea johnsonii</i>
<i>Xanthorrhoea malacophylla</i>
<i>Xerochrysum bracteatum</i>
<i>Youngia japonica</i>
<i>Zehneria cunninghamii</i>
<i>Zieria laxiflora</i>
<i>Zornia dyctiocarpa</i> var. <i>dyctiocarpa</i>

APPENDIX 4 – FAUNA SPECIES LIST

Fauna found within 5000m of flora reserve, desktop search undertaken September 2021

Amphibians and reptiles	
Scientific name	Common name
<i>Crinia signifera</i>	Common Eastern Froglet
<i>Limnodynastes dumerilii</i>	Eastern Banjo Frog
<i>Lechriodus fletcheri</i>	Fletcher's Frog
<i>Mixophyes fasciolatus</i>	Great Barred Frog
<i>Litoria lesueuri</i>	Lesueur's Frog
<i>Assa darlingtoni</i>	Pouched Frog
<i>Pseudophryne coriacea</i>	Red-backed Toadlet
<i>Phyllorhynchus sphagnicolus</i>	Sphagnum Frog
<i>Litoria verreauxii</i>	Verreaux's

Amphibians and reptiles	
Scientific name	Common name
	Frog
<i>Lampropholis delicata</i>	Dark-flecked Garden Sunskink
<i>Egernia mcphreei</i>	Eastern Crevice Skink
<i>Cryptophis nigrescens</i>	Eastern Small-eyed Snake
<i>Intellagama lesueurii</i>	Eastern Water Dragon
<i>Eulamprus quoyii</i>	Eastern Water-skink
<i>Silvascincus murrayi</i>	Murray's Skink
<i>Saproscincus rosei</i>	Orange-

Amphibians and reptiles	
Scientific name	Common name
	tailed Shadeskink
<i>Harrisoniascincus zia</i>	Rainforest Cool-skink
<i>Pseudechis porphyriacus</i>	Red-bellied Black Snake
<i>Calyptotis scutirostrum</i>	Scute-snouted Calyptotis
<i>Saiphos equalis</i>	Three-toed Skink
<i>Notechis scutatus</i>	Tiger Snake
<i>Saproscincus mustelinus</i>	Weasel Skink
<i>Eulamprus heatwolei</i>	Yellow-bellied Water-skink

Birds	
Scientific name	Common name
<i>Alectura lathamii</i>	Australian Brush-turkey
<i>Alisterus scapularis</i>	Australian King-Parrot
<i>Aegotheles cristatus</i>	Australian Owlet-nightjar
<i>Monarcha melanopsis</i>	Black-faced Monarch
<i>Macropygia phasianella</i>	Brown Cuckoo-Dove
<i>Falco berigora</i>	Brown Falcon
<i>Gerygone mouki</i>	Brown Gerygone
<i>Accipiter fasciatus</i>	Brown Goshawk
<i>Acanthiza pusilla</i>	Brown Thornbill
<i>Edolisoma tenuirostris</i>	Cicadabird
<i>Cinclosoma cinnamomeum</i>	Cinnamon Quail-thrush
<i>Platycercus</i>	Crimson

Birds	
Scientific name	Common name
<i>elegans</i>	Rosella
<i>Acanthorhynchus tenuirostris</i>	Eastern Spinebill
<i>Psophodes olivaceus</i>	Eastern Whipbird
<i>Corvus tasmanicus</i>	Forest Raven
<i>Calyptorhynchus lathamii</i>	Glossy Black-Cockatoo
<i>Pachycephala pectoralis</i>	Golden Whistler
<i>Ailuroedus crassirostris</i>	Green Catbird
<i>Cracticus torquatus</i>	Grey Butcherbird
<i>Rhipidura albiscapa</i>	Grey Fantail
<i>Colluricincla harmonica</i>	Grey Shrike-thrush
<i>Sericornis magnirostra</i>	Large-billed Scrubwren
<i>Meliphaga lewinii</i>	Lewin's Honeyeater

Birds	
Scientific name	Common name
<i>Tyto novaehollandiae</i>	Masked Owl
<i>Dicaeum hirundinaceum</i>	Mistletoebird
<i>Phylidonyris novaehollandiae</i>	New Holland Honeyeater
<i>Tregellasia capito</i>	Pale-yellow Robin
<i>Falco peregrinus</i>	Peregrine Falcon
<i>Strepera graculina</i>	Pied Currawong
<i>Ninox strenua</i>	Powerful Owl
<i>Trichoglossus haematodus</i>	Rainbow Lorikeet
<i>Petroica rosea</i>	Rose Robin
<i>Rhipidura rufifrons</i>	Rufous Fantail
<i>Ptilonorhynchus violaceus</i>	Satin Bowerbird
<i>Zosterops lateralis</i>	Silvereye
<i>Tyto tenebricosa</i>	Sooty Owl

Birds	
Scientific name	Common name
<i>Ninox novaeseelandiae</i>	Southern Boobook
<i>Acanthiza lineata</i>	Striated Thornbill
<i>Menura novaehollandiae</i>	Superb Lyrebird
<i>Lopholaimus antarcticus</i>	Topknot Pigeon
<i>Zoothera sp.</i>	unidentified ground thrush
<i>Malurus lamberti</i>	Variegated

Birds	
Scientific name	Common name
	Fairy-wren
<i>Aquila audax</i>	Wedge-tailed Eagle
<i>Sericornis frontalis</i>	White-browed Scrubwren
<i>Columba leucomela</i>	White-headed Pigeon
<i>Cormobates leucophaea</i>	White-throated Treecreeper

Birds	
Scientific name	Common name
<i>Caligavis chrysops</i>	Yellow-faced Honeyeater
<i>Zanda funereus</i>	Yellow-tailed Black-Cockatoo
<i>Neosericornis citreogularis</i>	Yellow-throated Scrubwren

Mammals	
Scientific name	Common name
<i>Antechinus stuartii</i>	Brown Antechinus
<i>Trichosurus sp.</i>	brushtail possum
<i>Rattus fuscipes</i>	Bush Rat
<i>Felis catus</i>	Cat
<i>Chalinolobus morio</i>	Chocolate Wattled Bat
<i>Trichosurus vulpecula</i>	Common Brushtail Possum
<i>Pseudocheirus peregrinus</i>	Common Ringtail Possum
<i>Canis lupus dingo</i>	Dingo
<i>Canis lupus</i>	Dingo, domestic dog
<i>Scotorepens orion</i>	Eastern Broad-nosed Bat
<i>Falsistrellus tasmaniensis</i>	Eastern False Pipistrelle
<i>Vespadelus pumilus</i>	Eastern Forest Bat
<i>Macropus giganteus</i>	Eastern Grey Kangaroo
<i>Rhinolophus megaphyllus</i>	Eastern Horseshoe-bat
<i>Melomys cervinipes</i>	Fawn-footed Melomys

Mammals	
Scientific name	Common name
<i>Nyctophilus gouldi</i>	Gould's Long-eared Bat
<i>Chalinolobus gouldii</i>	Gould's Wattled Bat
<i>Scoteanax rueppellii</i>	Greater Broad-nosed Bat
<i>Petauroides volans</i>	Greater Glider
<i>Pseudomys oralis</i>	Hastings River Mouse
<i>Mus musculus</i>	House Mouse
<i>Vespadelus darlingtoni</i>	Large Forest Bat
<i>Perameles nasuta</i>	Long-nosed Bandicoot
<i>Pseudomys novaehollandiae</i>	New Holland Mouse
<i>Isodon macrourus</i>	Northern Brown Bandicoot
<i>Macropus parma</i>	Parma Wallaby
<i>Ornithorhynchus anatinus</i>	Platypus
<i>Oryctolagus cuniculus</i>	Rabbit
<i>Rattus sp.</i>	rat
<i>Thylogale stigmatica</i>	Red-legged Pademelon

Mammals	
Scientific name	Common name
<i>Thylogale thetis</i>	Red-necked Pademelon
<i>Notamacropus rufogriseus</i>	Red-necked Wallaby
<i>Aepyprymnus rufescens</i>	Rufous Bettong
<i>Tachyglossus aculeatus</i>	Short-beaked Echidna
<i>Trichosurus caninus</i>	Short-eared Possum
<i>Vespadelus regulus</i>	Southern Forest Bat
<i>Dasyurus maculatus</i>	Spotted-tailed Quoll
<i>Petaurus breviceps</i>	Sugar Glider
<i>Rattus lutreolus</i>	Swamp Rat
<i>Wallabia bicolor</i>	Swamp Wallaby
<i>Isodon/Perameles sp.</i>	unidentified Bandicoot
<i>Canidae sp.</i>	unidentified canid
<i>Dasyuridae sp.</i>	unidentified dasyurid
<i>Muridae sp.</i>	unidentified murid rodent
<i>Austronomus australis</i>	White-striped Freetail-bat
<i>Petaurus australis</i>	Yellow-bellied Glider

APPENDIX 5 – APPROVAL AND AMENDMENTS FROM PREVIOUS VERSION

In line with section 25 of the *Forestry Act 2012*, flora reserve working plans and any amendments must be approved by the Minister. This plan forms part of the working plans for each of the individual flora reserves listed in section 6.

This plan was approved by The Hon. Tara Moriarty MLC, Minister for Agriculture, Minister for Regional New South Wales and Minister for Western New South Wales

Date of approval: 6/9/23

Version	Changes	Approval details
2.0	<ul style="list-style-type: none">» Reference to the <i>Flora Reserve Plan: Background and General Management</i>» Formatting updated» Change	<ul style="list-style-type: none">» The Hon. Tara Moriarty MLC, Minister for Agriculture, Minister for Regional New South Wales and Minister for Western New South Wales, 6/9/23