

NO ENTRY

FORESTRY REGULATION 2022 - SECTIONS 6 & 7

CLOSURE OF PART CLOUDS CREEK STATE FOREST

FORESTRY CORPORATION OF NEW SOUTH WALES HAS RESERVED THE AREA DESCRIBED BELOW AS 'THE CLOSED AREA' FOR THE EXCLUSIVE USE OF ITS CONTRACTORS, SUPPORT AND SUPERVISING STAFF CARRYING OUT HARVESTING AND ROADING OPERATIONS DURING THE PERIOD DESCRIBED BELOW AS 'THE CLOSURE PERIOD'.

THE ENTRY OF ALL PERSONS INTO THE CLOSED AREA DURING THE CLOSURE PERIOD, OTHER THAN PERSONS AUTHORISED IN WRITING BY THE FORESTRY CORPORATION OF NEW SOUTH WALES, IS HEREBY PROHIBITED.

PERSONS ENTERING INTO OR REMAINING IN THE CLOSED AREA DURING THE CLOSURE PERIOD WITHOUT FORESTRY CORPORATION OF NEW SOUTH WALES' PERMISSION ARE LIABLE TO PROSECUTION, MAXIMUM PENALTY \$2,200 PER OFFENCE.

DESCRIPTION OF THE CLOSED AREAS

That part of Clouds Creek State Forest No. 111 enclosed by the boundary commencing near the intersection of Blue Rock Road and the State Forest boundary (marked Point 'A' on the map); then continuing in an anti-clockwise direction around the closure area generally, in a south-easterly direction following the State Forest boundary to the intersection with the Blicks River (marked Point 'B' on the map); then generally, in a north-easterly direction following the Blicks River to the intersection with Billys Creek (marked Point 'C' on the map); then generally, in a north-westerly direction following Billys Creek to the State Forest boundary (marked point 'D' on the map); then in a generally westerly direction following the State Forest boundary to the intersection with Blue Rock Road (marked point 'A' on the map).

DESCRIPTION OF THE CLOSURE PERIOD

Between 7:00 am Monday 11th December 2023 and 6:00 pm Sunday 30th June 2024

BY ORDER OF FORESTRY CORPORATION OF NEW SOUTH WALES, by its delegate:



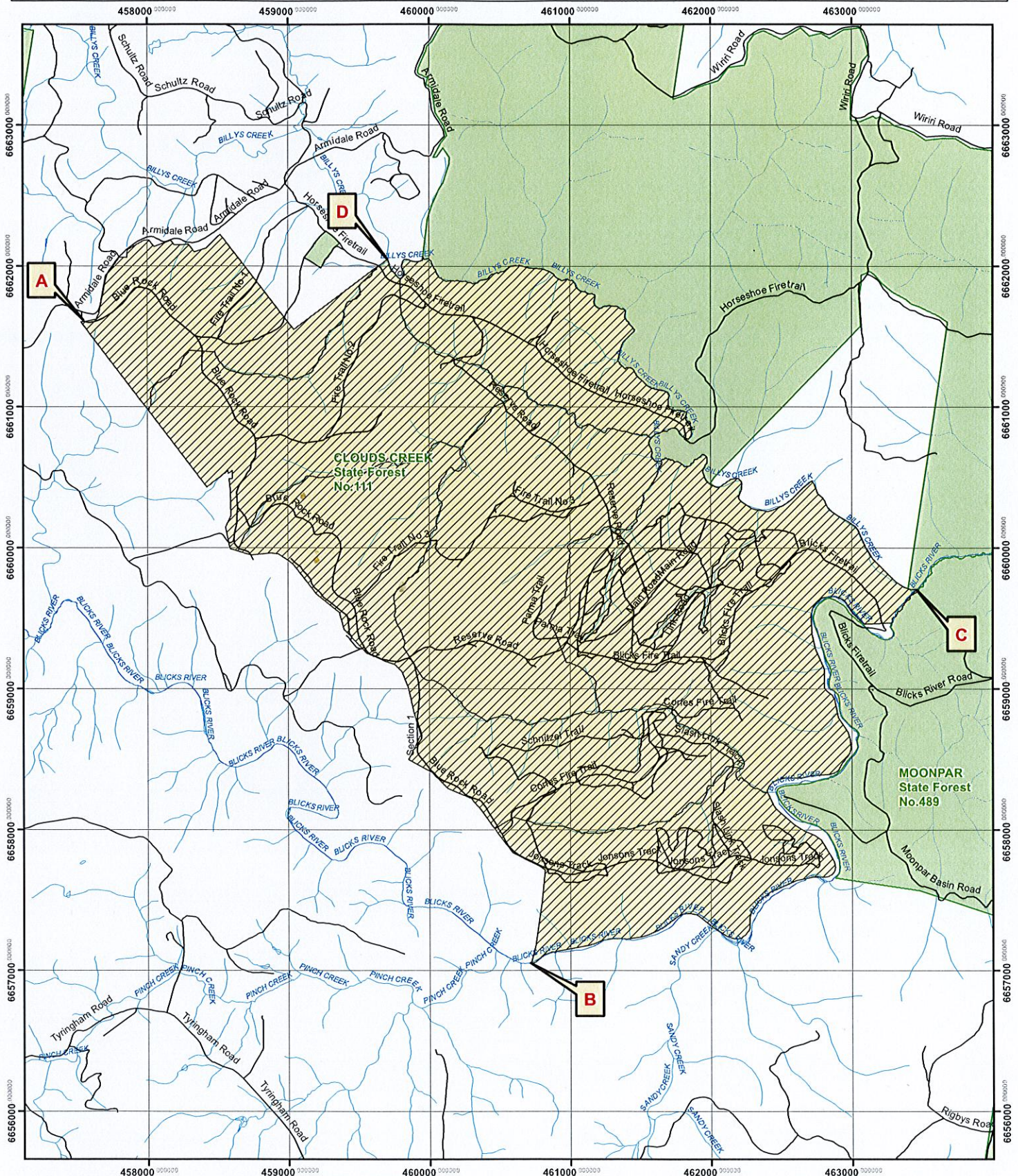
Dean Caton
REGIONAL MANAGER - NORTHERN
FCNSW COFFS HARBOUR

N
Scale: 1:25,000
Datum: GDA 1994

CLOSED AREA

FORESTRY REGULATION 2022 SECTION 6 & 7

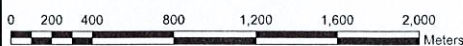
PART OF CLOUDS CREEK STATE FORESTS No. 111



LEGEND

- State Forest
- Closed Area
- Drainage Line
- Roads and Trails

This map is indicative only.
See supporting document with
description of exclusion area boundaries.



© Crown Copyright 2013. The information and data contained in this map is to the best of Forestry Corporation's belief, true and correct at the time of publication. However, changes in circumstances after the publication may impact upon the accuracy of the material. No warranty or guarantee is provided by the State of New South Wales, Forestry Corporation and its employees and agents and no liability is accepted for any loss or damage, costs or expense resulting from the use or reliance upon the information and data contained in this map.

Prepared by: HFD Planning
Date 7/12/2023