

Public Safety Network site within Kindra State Forest

Overview of the Public Safety Network

We wish to inform you of the NSW Government's Critical Communications Enhancement Program (CCEP) and the proposed activities to expand and enhance the Public Safety Network (PSN) in your local area.

The CCEP will expand and enhance the PSN to improve critical communications for Emergency Services Organisations (ESOs) and is being delivered by the NSW Telco Authority (NSWTA).

The PSN provides critical, secure and reliable radio communications for ESOs and first responders including the NSW State Emergency Service, NSW Police, NSW Ambulance, NSW Rural Fire Service and Fire and Rescue NSW.

PSN sites play a critical role in protecting communities by allowing frontline responders to reliably and immediately communicate with each other during an emergency. PSN sites were pivotal in protecting communities and supporting the emergency response to the 2019-20 Black Summer bushfires and the widespread floods of 2021 and 2022 across NSW.

Why is a radio communications site required at Coolamon?

The PSN site at Coolamon is required to improve the existing critical communications coverage for the Coolamon township and surrounding Riverina area.

Community benefits

- The PSN helps save lives by allowing frontline responders and ESOs to communicate and coordinate responses to critical incidents and disasters on a single, shared network.
- By expanding the PSN, the program will increase the network's land coverage from less than 35% to **85%**, providing coverage for **99.7%** of the state's population.
- The PSN provides frontline responders with **99.95%** network reliability and ensures they have the radio communications infrastructure required to keep people and places safe, now and into the future.

What do the works involve?

NSWTA is installing a 50-metre lattice tower and equipment shelter within a 15 metre by 10 metre fenced compound. The proposal is located within a previously disturbed and partially cleared area within Kindra State Forest.

Vegetation clearing will be required to establish the site compound and an area within 10 metres of the infrastructure known as an Asset Protection Zone. The site location is adjacent to the Council works depot and would be accessed through the depot from Lewis Street North (a map of the site location and photomontages are provided in Attachment A to this Information Sheet).

During construction there will be approximately two to four vehicles and/or machinery at the site. The construction will be carried out within standard working hours, Monday to Friday 7am - 6pm and Saturday 8am - 1pm. No work will be carried out on Sundays or public holidays.

How long will the work take?

Construction is estimated to take 8 - 12 weeks to complete (weather dependent) and will commence in 2024.

What planning assessment and approval process was carried out for the proposal?

NSWTA is required to examine and consider the impacts of the proposal on the environment under Part 5 of the *Environmental Planning and Assessment Act 1979* (EP&A Act) and clause 170 of the *Environmental Planning and Assessment Regulation 2021*. A Review of Environmental Factors (REF) was carried out to meet the legislative requirements.

The REF included an assessment of the potential biodiversity impacts associated with the vegetation clearing of approximately 0.11 hectares of semi-mature and juvenile trees, an Aboriginal cultural heritage due diligence assessment and a visual impact assessment using photomontages.

Notification of the proposal is documented in the REF and includes local community and groups such as the Coolamon Landcare Group, the Kindra Park and Coolamon Sports and Recreation Club, the Wagga Wagga Local Aboriginal Land Council, the Coolamon Shire Council and Forestry Corporation.

The EP&A Act states NSWTA is both the proponent and the determining (approving) authority for the proposal. Section 5.7 of the EP&A Act requires NSWTA to determine whether the proposal is likely to significantly affect the environment.

The REF concluded there would not be a significant impact to the environment - provided the safeguards identified to minimise environmental and community impacts are implemented by the Construction Contractor, through a Site Environmental Plan.

Health and safety

The operation of the PSN is regulated according to national health and safety standards. This includes strict compliance with the Australian Radiation Protection and Nuclear Safety Agency (ARPANSA) standards which apply to all radio facility operators.

The predicted electromagnetic energy (EME) from the site would be 0.02% of the public exposure limit, which remains well within the 100% safe limit.

Contact us

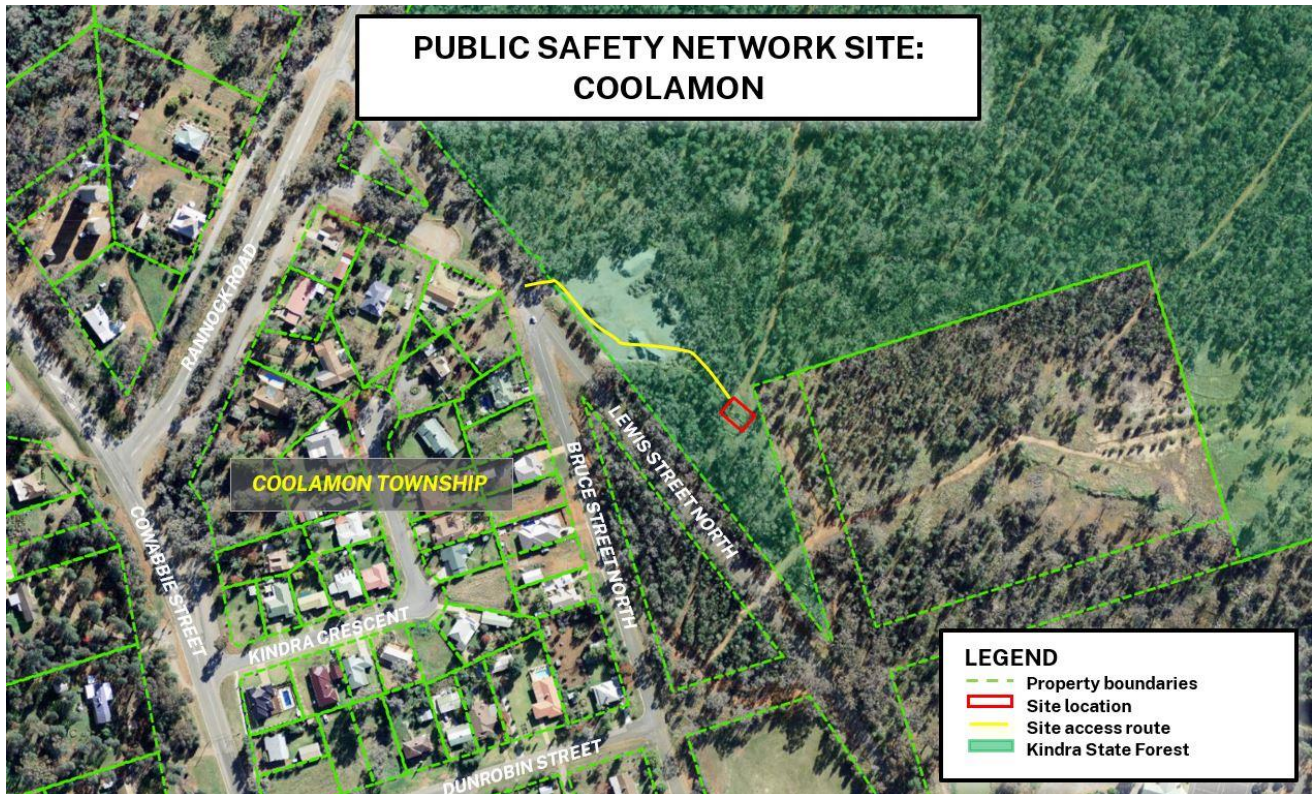
If you have any further questions, please contact NSWTA via phone: **1800 794 862** or via email: ccepinfo@customerservice.nsw.gov.au.

You can also read more about the CCEP on our website: www.nsw.gov.au/telco-authority.

Attachment A

Site location map

- Aerial image showing the location of the proposal.



Photomontages

- Photomontage 1 (left) depicts the proposal from the corner of Bruce Street North and Douglas Street (outside Coolamon Central School).
- Photomontage 2 (right) viewpoint from 116 Bruce Street North.

