



SIDLINGS SWAMP FLORA RESERVE NO. 169

SITE SPECIFIC WORKING PLAN

Table of Contents

1. Details of the Reserve	3
1.1 Location	3
1.2 Key Attributes of the reserve	3
1.3 General Description	3
1.4 History	4
1.5 Current Usage	5
2. System of Management	5
2.1 Objectives of Management	5
2.2 Management Strategies	6
2.3 Management Responsibility	7
2.4 Monitoring, Reporting and Review	8
3. List of Appendices	8
Appendix 1 – Locality Map	9
Appendix 2 – Topographic & Forest Type Map	10
Appendix 3 – Flora Species List	11
Appendix 4 – Fauna Species List	16
Appendix 5 – Approval and Amendments from previous version	19

Document title: Sidlings Swamp Site Specific Working Plan	Version No.: 2	Page 2 of 19
Document ID: D22/5551	Owner: Senior Manager Forest Stewardship	Issue date: 6/9/23
		Review date: 6/9/33

WARNING: a printed copy of this document may be uncontrolled. Please verify this is the latest version prior to use.

This site-specific working describes the important values of an individual flora reserve and identifies site-specific priorities for management. The plan is to be read in conjunction with the Flora Reserve Plan: Background and General Management document, which identifies Forestry Corporation's broad objectives and strategies for managing flora reserves. These two documents together form the flora reserve working plan in line with the requirements of section 25 of the *Forestry Act 2012*.

1. DETAILS OF THE RESERVE

1.1 LOCATION

Sidlings Swamp Flora Reserve is located within Timbillica State Forest. It is approximately 36 kilometres south of Eden by the Princes Highway. See Locality Map in Appendix 1.

1.2 KEY ATTRIBUTES OF THE RESERVE

Under the *Forestry Act 2012*, flora reserves are set apart for the preservation of native flora.

The reserve possesses the following identified attributes that are to be protected:

- » stands of *Eucalyptus conspicua sp nov*, and the associated swamp communities
- » areas of River-Flat Eucalypt Forest, a threatened ecological community
- » areas of Aboriginal cultural heritage significance.

1.3 GENERAL DESCRIPTION

Area

Sidlings Swamp Flora Reserve has an area of approximately 1250 hectares. The northern boundary of the reserve follows a tributary of the Wonboyn River, the Wonboyn River, the private property boundary, and then another river tributary to Corduroy Road. The western boundary follows Corduroy Road, Bens Road, White Gums Trail, and the PMP highway visual reserve until it reaches the private property boundary (Timbillica) which then forms the reserve's southern boundary. The Princes Highway borders the reserve in the east. It excludes Water Reserve 5, adjacent to the Princes Highway, which is administered by the Pastures Protection Board.

Topography

The area is dominated by a swamp lying north-south with an altitude of 40 metres above sea level to 60 metres. This swamp is bounded by low rounded hills to 120 metres above sea level to the east and west. The drainage lines in the northern half of the reserve drain into Sidlings Swamp which drains into the Wonboyn River which enters the Pacific Ocean at Disaster Bay. Drainage lines in the southern section drain into various creeks which flow into the Wallagaraugh River which flows into Mallacoota Inlet. Refer to Appendix 2 for topographic map.

Geology and soils

The reserve contains gravel and sands of the Tertiary and recent periods. The soils are typically gleyed in swamp areas graduating to soils derived from shales and hornfels of the Ordovician period on the ridge lines.

Document title: Sidlings Swamp Site Specific Working Plan	Version No.: 2	Page 3 of 19
Document ID: D22/5551	Owner: Senior Manager Forest Stewardship	Issue date: 6/9/23
		Review date: 6/9/33

WARNING: a printed copy of this document may be uncontrolled. Please verify this is the latest version prior to use.

Climate

Median annual rainfall is between 800mm and 850mm. Rainfall distribution varies considerably between years; however, the general pattern is for the lowest monthly rainfall to occur in July, August, and September. Highest falls occur from January to June.

Winds over the area are mainly light to moderate but strong winds and wind squalls occur occasionally. Prevailing winds are from the west to southwest in winter, and west to northwest in summer.

Vegetation / flora and fauna

The reserve contains a good example of a 'Lowland Swamp'. The swamp occupies approximately 162 hectares. Two stands of *Eucalyptus conspicua* occur in association with the swamp. This is an unusual northern occurrence of this species.

The forest surrounding the swamp is dominated by Yertchuk (forest type 102). Tree species include *Eucalyptus consideriana*, *E. sieberi*, *E. globoidea*. Forest type 157, Yellow Stringybark-Gum is found along several creek lines within the reserve. Scattered *E. cypellocarpa* occur on a flat in the northern section of the reserve. Appendix 2 Map shows the various forest types and their locations within the reserve.

Appendices 3 and 4 outline a list of flora and fauna species known to occur within the reserve.

1.4 HISTORY

Aboriginal History and Cultural Values

Sidlings Swamp Flora Reserve is situated within the traditional lands of the Yuin people and there are a number of Aboriginal cultural heritage sites located within or within the surrounding area. The area is part of a cultural landscape, used for everyday and ceremonial activities including seasonal food and resource gathering and also as a travel route from the mountains to the coast. Tangible aspects of these activities are evident as walking tracks and scar trees, the remains of camp sites with stone tools (isolated stone artefact and artefact scatters) as well as sacred features and places created at the beginning of time.

Post European Settlement

Harvesting

Evidence of sleeper cutting has been found within the reserve.

Two small areas were salvage logged in 1982 following the 1980 Timbillica fire. Compartment 242 Coupe 1 (5.5 hectares) produced 224 tonnes of pulp. Compartment 226 Coupes 16 and 17 (32.1 hectares) produced 13 tonnes of pulp per hectares and only a few sawlogs. Integrated logging was carried out in compartment 254, Coupe 2 (14.6 hectares) during June 1979. It produced 78 tonnes per hectare of pulp and 3.2m³ per hectare of sawlogs. Other coupes within the reserve contain uncommercial volumes of timber.

Fire

Fire has been part of the Australian landscape for at least the last 60,000 years and most forests have experienced fire multiple times over many centuries. The reserve was regularly burnt by graziers during the early part of this century. In 1972 a major fire burnt to the western boundary of the reserve. The northern half of the reserve was devastated by the Timbillica fire in November 1980.

Since that time the reserve has been subject to regular fuel reduction burns, especially the high-risk area adjacent to the Princes Highway.

Document title: Sidlings Swamp Site Specific Working Plan	Version No.: 2	Page 4 of 19
Document ID: D22/5551	Owner: Senior Manager Forest Stewardship	Issue date: 6/9/23
		Review date: 6/9/33

WARNING: a printed copy of this document may be uncontrolled. Please verify this is the latest version prior to use.

January 1991 saw a fire event burn 197 hectares of the reserve. Originating as a lightning strike east of the reserve, a spot-over the Princes Highway 250 metres north of Dinner Creek Fire Trail initiated the reserve fire. Impact on the reserve included three peripheral fire breaks pushed in to control the wildfire. Most recently the reserve was impacted by wildlife during the 2019-20 summer season. High to extreme fire intensity was recorded, resulting in the canopy being partially burnt and completely scorched in discrete areas.

Grazing

The reserve formed part of the stock route between Eden and Bairnsdale. This was used from the early 1900's. Dinner Creek was a regular stopping spot for the stockmen. A water reserve still exists within the Reserve.

The reserve area was informally grazed by cattle especially during dry periods. The surrounding forests was burnt, by the graziers, to promote grass growth.

Establishment of Flora Reserve

The area was officially gazetted as Sidlings Swamp Flora Reserve No. 169 on 1st January 1999.

1.5 CURRENT USAGE

The reserve receives limited recreational usage, no recreational facilities are provided at the reserve and there is no intention to develop any facilities.

The reserve is crossed by an access road to the private property in the north, Timbillica Road, Stoney Creek Road, and Allans Track. The private road and Timbillica Road dissect stands of *Eucalyptus conspicua*.

The fire breaks created during a wildlife in 1991 have been maintained as fire trails, as has a trail between the private access road and the Princes Highway along an eastern protrusion of the swamp.

Work associated with the Princes Highway have encroached into the reserve along its eastern boundary. Several disused gravel pits are located in the southern half of the reserve.

The Pasture Protection Board's water reserve is no longer defined and is now unlikely to be used by travelling stock.

Two CSIRO wildlife research plots are located on the swamp boundary near Timbillica Road.

2. SYSTEM OF MANAGEMENT

2.1 OBJECTIVES OF MANAGEMENT

The objectives of management are to:

- » protect existing flora and fauna
- » protect stands of *Eucalyptus conspicua sp nov*, and the associated swamp communities
- » enhance the ecological quality of areas of River-Flat Eucalypt Forest, a threatened ecological community
- » protect representative examples of forest ecosystems in the area

Document title: Sidlings Swamp Site Specific Working Plan	Version No.: 2	Page 5 of 19
Document ID: D22/5551	Owner: Senior Manager Forest Stewardship	Issue date: 6/9/23
		Review date: 6/9/33

WARNING: a printed copy of this document may be uncontrolled. Please verify this is the latest version prior to use.

- » protect Aboriginal cultural heritage sites and cultural values
- » maintain reference stands and provide for limited scientific study consistent with the protection of the area, including the development of an understanding of successional growth processes after disturbance and as a reference for assessing the effects of alternative land use in surrounding areas
- » provide for the continued protection of the reserve and neighboring areas from damaging wildfire and other agents.

2.2 MANAGEMENT STRATEGIES

The broad management strategies and related actions to preserve native flora and improve the value and extent of habitat in State forest flora reserves are detailed in the Flora Reserve Management Plan: Background and General Management document, which is to be read in conjunction with this plan. Specific additional management strategies applied in this flora reserve may include:

- » Property maintenance, through:
 - establishment and maintenance of appropriate fences, gates, and signs
 - removal of unnecessary fencing
 - maintenance of roads and trails
 - restricting visitor use to walking trails for educational activities.
- » Conservation and improvement of habitat, through:
 - maintenance of native vegetation, which may include manipulation by mechanical means for habitat improvement
 - regeneration of any cleared or degraded land, through plantings and natural recruitment
 - removal of rubbish
 - weed control
 - management of human disturbance, including harvesting and other forest product operations
 - retention of dead timber and other habitat resources
 - management of fire, including
 - prescribed or hazard reduction burning
 - fire-fighting activities where required to protect community assets outside of lands managed by Forestry Corporation.
- » Pest animal control.

Cultural Values

Explore opportunities for Aboriginal community involvement in managing the flora reserve.

Heritage items identified as of local or State significance, so appearing in Forestry Corporation's Heritage and Conservation Register (S.170 register) or State Heritage Register, will be maintained with due diligence in accordance with State Owned [Heritage Management Principles](#) (S.170A of the *Heritage Act 1977*).

Weeds

The vegetation within the flora reserve is in very healthy state with no obvious weeds present. As far as reasonably practicable, exotic species will be controlled, as detailed in section 2.4.

Document title: Sidlings Swamp Site Specific Working Plan	Version No.: 2	Page 6 of 19
Document ID: D22/5551	Owner: Senior Manager Forest Stewardship	Issue date: 6/9/23
		Review date: 6/9/33

WARNING: a printed copy of this document may be uncontrolled. Please verify this is the latest version prior to use.

Trail maintenance

Maintenance of roads and trails is important to enable access to the forest for forest management, firefighting, tourism and recreation. Poorly maintained roads can also transport significant levels of sediment, increasing the turbidity of water within creeks. This consequently reduces habitat quality and aquatic biodiversity and can take significant periods of time to recover.

Permitted activities

Under the Forest Management Zoning (FMZ) system, Sidlings Swamp Flora Reserve No. 169 is a dedicated reserve zoned FMZ 1 and therefore contributes to the dedicated reserve system in the Southern Region. Management will be consistent with the requirements of JANIS dedicated reserves.

The latest operational guide detailing activities not permitted in FMZ1 is published on the Forestry Corporation website.

The following activities may be permitted subject to standard conditions approved by the delegated Manager and consistent with the management objectives for the reserve, relevant codes of practice, forest practices / operational circulars, protocols, licenses and management / recovery plans:

- » scientific studies (e.g., fauna surveys including trapping)
- » maintenance of existing roads and fire trails
- » maintenance of existing recreation facilities and upgrading where necessary to keep pace with demand while protecting the attributes of the reserve
- » limited tree and or limb removal for safety, viewing or construction of facilities in areas used for recreation
- » pest animal and weed control
- » general access for activities such as bush walking, photography, and nature study
- » beekeeping (existing set-down sites may be used)
- » Aboriginal use of forest products consistent with the maintenance of the conservation attributes to be protected in the reserve
- » fire management will be undertaken in a manner consistent with maintaining the health of forest ecosystems.

The following activities may only be permitted with special conditions:

- » Construction of new roads. Construction will only be permitted in exceptional instances and consistent with the following principles:
 - no practical alternative is available
 - the attributes of the reserve will not be significantly affected by the road or fire trail
 - opportunity is provided for public comment on the proposal, obtained through advertising in the local newspaper, either print or online, or by publication on a website considered reasonably likely to come to the attention of members of the local community
 - Ministerial approval is given for the proposal.

Mining

There are no gazetted exemptions from provisions of the *Mining Act 1992* for this this flora reserve.

2.3 MANAGEMENT RESPONSIBILITY

Document title: Sidlings Swamp Site Specific Working Plan	Version No.: 2	Page 7 of 19
Document ID: D22/5551	Owner: Senior Manager Forest Stewardship	Issue date: 6/9/23
		Review date: 6/9/33

WARNING: a printed copy of this document may be uncontrolled. Please verify this is the latest version prior to use.

The reserve will be administered by Forestry Corporation of NSW's Hardwood Division, with the authority for decision making delegated to the Senior Manager Forest Stewardship equivalent level manager.

2.4 MONITORING, REPORTING AND REVIEW

The region will monitor changes to the key attributes of the reserve and will review the effectiveness of the management strategies designed to protect those attributes and to achieve the management objectives.

The results of this monitoring, review and management response will be included in annual reporting processes.

The provisions of this working plan will be amended, if necessary, in light of the results of the monitoring program and / or legislative change and with the approval of the Minister administering the *Forestry Act 2012*.

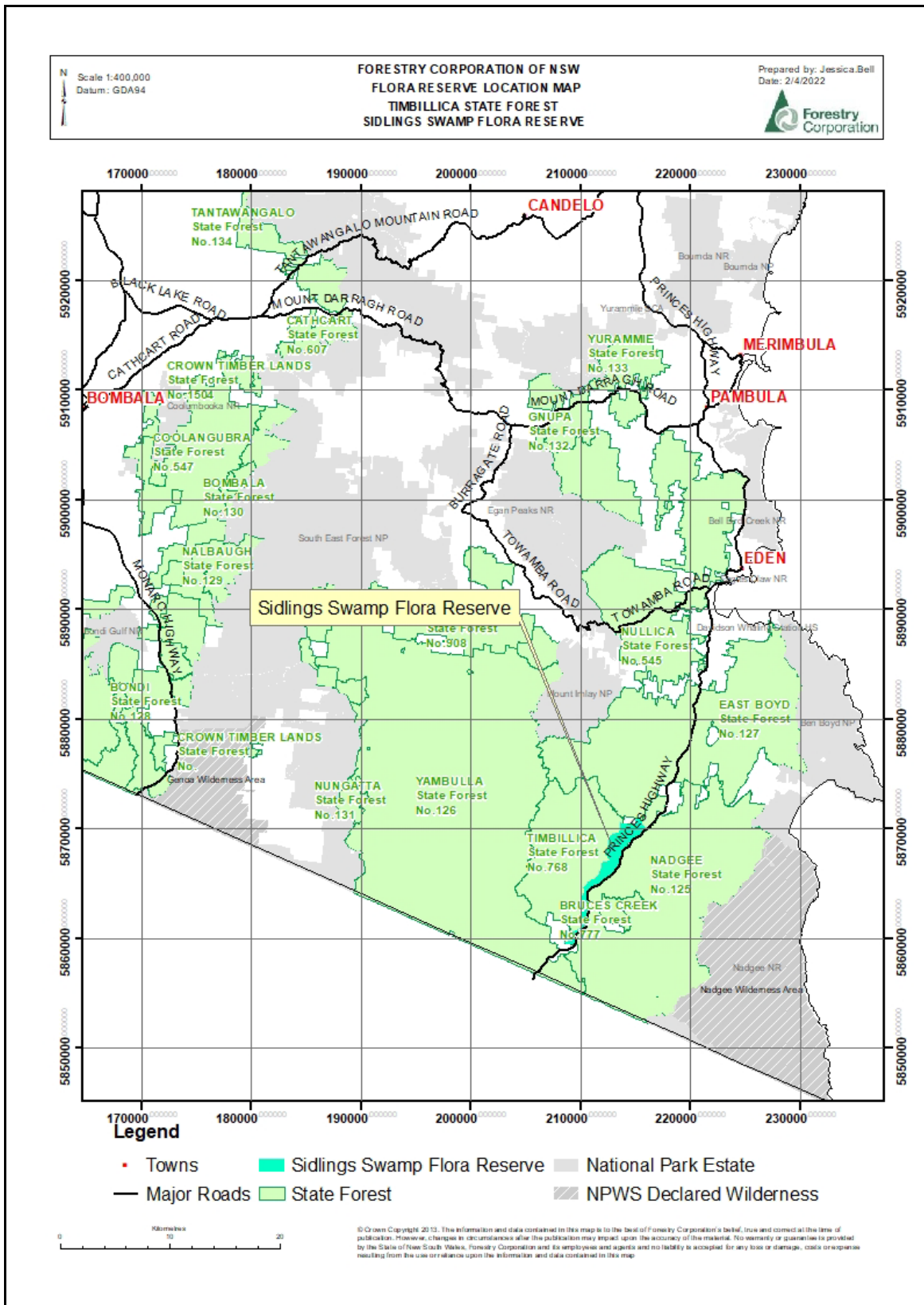
3. LIST OF APPENDICES

- » Appendix 1 – Locality Map
- » Appendix 2 – Topographic and Forest Type Map
- » Appendix 3 – Flora Species List
- » Appendix 4 – Fauna Species List
- » Appendix 5 – Approval and amendments from previous version

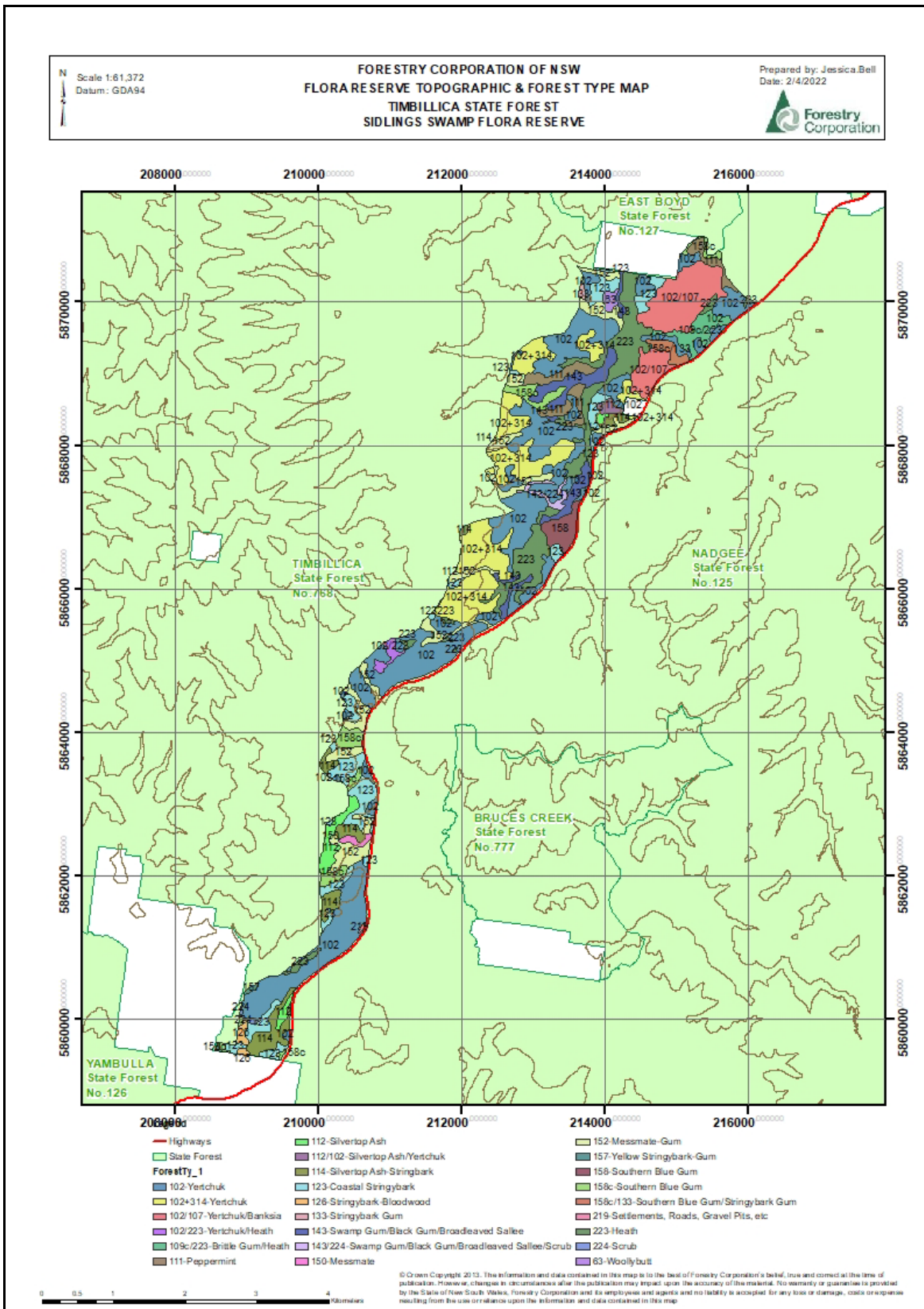
Document title: Sidlings Swamp Site Specific Working Plan	Version No.: 2	Page 8 of 19
Document ID: D22/5551	Owner: Senior Manager Forest Stewardship	Issue date: 6/9/23
		Review date: 6/9/33

WARNING: a printed copy of this document may be uncontrolled. Please verify this is the latest version prior to use.

APPENDIX 1 – LOCALITY MAP



APPENDIX 2 – TOPOGRAPHIC & FOREST TYPE MAP



APPENDIX 3 – FLORA SPECIES LIST

Flora found within 5000m of Flora Reserve, desktop search undertaken February 2022

Scientific name	Scientific name	Scientific name
<i>Acacia aculeatissima</i>	<i>Amyema pendula</i>	<i>Bossiaea heterophylla</i>
<i>Acacia cognata</i>	<i>Angophora floribunda</i>	<i>Bossiaea prostrata</i>
<i>Acacia constablei</i>	<i>Anisopogon avenaceus</i>	<i>Bossiaea spp.</i>
<i>Acacia falciformis</i>	<i>Aotus ericoides</i>	<i>Brunoniella pumilio</i>
<i>Acacia genistifolia</i>	<i>Arrhenechthites mixta</i>	<i>Burchardia umbellata</i>
<i>Acacia implexa</i>	<i>Arthrochilus huntianus</i>	<i>Bursaria spinosa</i>
<i>Acacia lanigera</i>	<i>Asplenium flabellifolium</i>	<i>Bursaria spinosa subsp. lasiophylla</i>
<i>Acacia lanigera var. gracilipes</i>	<i>Astroloma humifusum</i>	<i>Caesia parviflora</i>
<i>Acacia longifolia</i>	<i>Australina pusilla</i>	<i>Caesia spp.</i>
<i>Acacia longifolia subsp. longifolia</i>	<i>Austrostipa pubinodis</i>	<i>Caladenia catenata</i>
<i>Acacia mearnsii</i>	<i>Austrostipa rudis</i>	<i>Caladenia praecox</i>
<i>Acacia melanoxylon</i>	<i>Austrostipa rudis subsp. nervosa</i>	<i>Caladenia pusilla</i>
<i>Acacia mucronata subsp. longifolia</i>	<i>Austrostipa rudis subsp. rudis</i>	<i>Callistemon citrinus</i>
<i>Acacia myrtifolia</i>	<i>Austrostipa spp.</i>	<i>Callistemon sieberi</i>
<i>Acacia obtusifolia</i>	<i>Baloskion tetraphyllum subsp. tetraphyllum</i>	<i>Callitriche muelleri</i>
<i>Acacia rubida</i>	<i>Banksia cunninghamii</i>	<i>Calochilus campestris</i>
<i>Acacia spp.</i>	<i>Banksia marginata</i>	<i>Calochilus robertsonii</i>
<i>Acacia stricta</i>	<i>Banksia paludosa</i>	<i>Calochlaena dubia</i>
<i>Acacia suaveolens</i>	<i>Banksia serrata</i>	<i>Calomeria amaranthoides</i>
<i>Acacia terminalis</i>	<i>Banksia spinulosa var. spinulosa</i>	<i>Calystegia marginata</i>
<i>Acacia terminalis subsp. angustifolia</i>	<i>Baumea gunnii</i>	<i>Calytrix tetragona</i>
<i>Acacia verticillata subsp. verticillata</i>	<i>Baumea rubiginosa</i>	<i>Carex appressa</i>
<i>Acaena novae-zelandiae</i>	<i>Baumea teretifolia</i>	<i>Carex breviculmis</i>
<i>Acianthus pusillus</i>	<i>Baumea tetragona</i>	<i>Carex longebrachiata</i>
<i>Acmena smithii</i>	<i>Bedfordia arborescens</i>	<i>Cassinia aculeata</i>
<i>Acronychia oblongifolia</i>	<i>Beyeria lasiocarpa</i>	<i>Cassinia longifolia</i>
<i>Acrotriche serrulata</i>	<i>Billardiera mutabilis</i>	<i>Cassinia trinerva</i>
<i>Adiantum aethiopicum</i>	<i>Billardiera scandens</i>	<i>Cassytha glabella</i>
<i>Aira cupaniana</i>	<i>Blechnum cartilagineum</i>	<i>Cassytha glabella f. glabella</i>
<i>Allocasuarina littoralis</i>	<i>Blechnum minus</i>	<i>Cassytha pubescens</i>
<i>Allocasuarina paludosa</i>	<i>Blechnum neohollandicum</i>	<i>Cassytha spp.</i>
<i>Amperea xiphoclada</i>	<i>Blechnum nudum</i>	<i>Caustis flexuosa</i>
<i>Amyema congener subsp. congener</i>	<i>Blechnum patersonii subsp. patersonii</i>	<i>Centaurium erythraea</i>
	<i>Blechnum spinulosum</i>	<i>Centaurium spp.</i>
	<i>Boronia nana var. hyssopifolia</i>	<i>Centrolepis spp.</i>
		<i>Cheilanthes austrotenuifolia</i>
		<i>Chrysocephalum baxteri</i>

Scientific name
<i>Cirsium vulgare</i>
<i>Cissus hypoglauca</i>
<i>Clematis aristata</i>
<i>Clematis glycinoides</i>
<i>Clematis glycinoides</i> var. <i>glycinoides</i>
<i>Comesperma retusum</i>
<i>Comesperma volubile</i>
<i>Conyza sumatrensis</i>
<i>Cooperhooia barbata</i>
<i>Coprosma quadrifida</i>
<i>Coronidium elatum</i>
<i>Coronidium scorpioides</i>
<i>Correa lawrenceana</i> var. <i>cordifolia</i>
<i>Correa reflexa</i>
<i>Correa reflexa</i> var. <i>reflexa</i>
<i>Craspedia variabilis</i>
<i>Crassula decumbens</i> var. <i>decumbens</i>
<i>Crassula sieberiana</i>
<i>Cryptandra amara</i>
<i>Cryptandra amara</i> var. <i>amara</i>
<i>Cryptostylis leptochila</i>
<i>Cryptostylis</i> spp.
<i>Cullen microcephalum</i>
<i>Cyanicula caerulea</i>
<i>Cyathea australis</i>
<i>Cyperus eragrostis</i>
<i>Cyperus gunnii</i> subsp. <i>gunnii</i>
<i>Dampiera stricta</i>
<i>Daucus glochidiatus</i>
<i>Daviesia latifolia</i>
<i>Daviesia mimosoides</i> subsp. <i>mimosoides</i>
<i>Daviesia ulicifolia</i>
<i>Dendrobium speciosum</i>
<i>Dendrobium speciosum</i> var. <i>speciosum</i>
<i>Dendrobium striolatum</i>
<i>Desmodium gunnii</i>
<i>Desmodium varians</i>
<i>Deyeuxia nudiflora</i>
<i>Deyeuxia quadriseta</i>
<i>Deyeuxia scaberula</i>

Scientific name
<i>Deyeuxia</i> spp.
<i>Dianella caerulea</i>
<i>Dianella caerulea</i> var. <i>caerulea</i>
<i>Dianella revoluta</i>
<i>Dianella revoluta</i> var. <i>revoluta</i>
<i>Dichelachne inaequiglumis</i>
<i>Dichelachne parva</i>
<i>Dichelachne rara</i>
<i>Dichondra repens</i>
<i>Dicksonia antarctica</i>
<i>Dillwynia glaberrima</i>
<i>Dillwynia rudis</i>
<i>Dillwynia sericea</i>
<i>Diuris maculata</i>
<i>Dodonaea triquetra</i>
<i>Dodonaea truncatiales</i>
<i>Drosera auriculata</i>
<i>Drosera peltata</i>
<i>Drosera pygmaea</i>
<i>Drosera spatulata</i>
<i>Echinopogon ovatus</i>
<i>Elaeocarpus reticulatus</i>
<i>Eleocharis acuta</i>
<i>Eleocharis gracilis</i>
<i>Empodisma minus</i>
<i>Entolasia marginata</i>
<i>Entolasia stricta</i>
<i>Epacris impressa</i>
<i>Epacris obtusifolia</i>
<i>Epacris paludosa</i>
<i>Epilobium billardierianum</i>
<i>Epilobium billardierianum</i> subsp. <i>cinereum</i>
<i>Eragrostis trachycarpa</i>
<i>Eucalyptus agglomerata</i>
<i>Eucalyptus angophoroides</i>
<i>Eucalyptus baxteri</i>
<i>Eucalyptus bosistoana</i>
<i>Eucalyptus consideniana</i>
<i>Eucalyptus conspicua</i>
<i>Eucalyptus croajingolensis</i>
<i>Eucalyptus croajingolensis</i> subsp. <i>blanda</i>
<i>Eucalyptus cypellocarpa</i>

Scientific name
<i>Eucalyptus elata</i>
<i>Eucalyptus globoidea</i>
<i>Eucalyptus ignorabilis</i>
<i>Eucalyptus longifolia</i>
<i>Eucalyptus muelleriana</i>
<i>Eucalyptus obliqua</i>
<i>Eucalyptus ovata</i>
<i>Eucalyptus radiata</i> subsp. <i>radiata</i>
<i>Eucalyptus sieberi</i>
<i>Eucalyptus smithii</i>
<i>Eucalyptus</i> spp.
<i>Eucalyptus viminalis</i>
<i>Eucalyptus x dixonii</i>
<i>Euchiton japonicus</i>
<i>Euchiton sphaericus</i>
<i>Euchiton</i> spp.
<i>Eupomatia laurina</i>
<i>Eurychorda complanata</i>
<i>Eustrephus latifolius</i>
<i>Exocarpos cupressiformis</i>
<i>Exocarpos</i> spp.
<i>Exocarpos strictus</i>
<i>Gahnia clarkei</i>
<i>Gahnia melanocarpa</i>
<i>Gahnia radula</i>
<i>Gahnia sieberiana</i>
<i>Gahnia</i> spp.
<i>Galium binifolium</i>
<i>Galium leiocarpum</i>
<i>Galium propinquum</i>
<i>Gamochaeta</i> spp.
<i>Genoplesium pumilum</i>
<i>Genoplesium</i> spp.
<i>Geranium homeanum</i>
<i>Geranium potentilloides</i>
<i>Geranium potentilloides</i> var. <i>potentilloides</i>
<i>Geranium solanderi</i>
<i>Geranium solanderi</i> var. <i>solanderi</i>
<i>Gleichenia dicarpa</i>
<i>Gleichenia microphylla</i>
<i>Glossodia</i> spp.
<i>Glycine clandestina</i>

Scientific name
<i>Glycine microphylla</i>
<i>Gompholobium huegelii</i>
<i>Gompholobium inconspicuum</i>
<i>Gompholobium latifolium</i>
<i>Gonocarpus micranthus</i> subsp. <i>micranthus</i>
<i>Gonocarpus tetragynus</i>
<i>Gonocarpus teucrioides</i>
<i>Goodenia ovata</i>
<i>Goodenia</i> spp.
<i>Goodia lotifolia</i>
<i>Gratiola peruviana</i>
<i>Gymnoschoenus sphaerocephalus</i>
<i>Gynochthodes jasminoides</i>
<i>Hackelia latifolia</i>
<i>Hakea dactyloides</i>
<i>Hakea decurrens</i>
<i>Hakea decurrens</i> subsp. <i>physocarpa</i>
<i>Hakea decurrens</i> subsp. <i>platytaenia</i>
<i>Hakea sericea</i>
<i>Hakea teretifolia</i>
<i>Hakea teretifolia</i> subsp. <i>teretifolia</i>
<i>Hardenbergia violacea</i>
<i>Hedycarya angustifolia</i>
<i>Helichrysum leucopsideum</i>
<i>Hibbertia acicularis</i>
<i>Hibbertia aspera</i>
<i>Hibbertia dentata</i>
<i>Hibbertia empetrifolia</i> subsp. <i>empetrifolia</i>
<i>Hibbertia obtusifolia</i>
<i>Hierochloe rariflora</i>
<i>Hovea heterophylla</i>
<i>Hybanthus vernonii</i> subsp. <i>vernonii</i>
<i>Hydrocotyle acutiloba</i>
<i>Hydrocotyle geraniifolia</i>
<i>Hydrocotyle hirta</i>
<i>Hydrocotyle laxiflora</i>
<i>Hydrocotyle sibthorpioides</i>
<i>Hydrocotyle tripartita</i>

Scientific name
<i>Hypericum gramineum</i>
<i>Hypericum japonicum</i>
<i>Hypochaeris radicata</i>
<i>Hypolepis glandulifera</i>
<i>Hypolepis muelleri</i>
<i>Hypolepis</i> spp.
<i>Indigofera australis</i>
<i>Isachne globosa</i>
<i>Isolepis inundata</i>
<i>Juncus articulatus</i>
<i>Juncus australis</i>
<i>Juncus bufonius</i>
<i>Juncus bulbosus</i>
<i>Juncus continuus</i>
<i>Juncus fockei</i>
<i>Juncus gregiflorus</i>
<i>Juncus pallidus</i>
<i>Juncus pauciflorus</i>
<i>Juncus planifolius</i>
<i>Juncus prismatocarpus</i>
<i>Juncus procerus</i>
<i>Juncus subsecundus</i>
<i>Juncus usitatus</i>
<i>Kennedia prostrata</i>
<i>Kennedia rubicunda</i>
<i>Kunzea ambigua</i>
<i>Kunzea ericoides</i>
<i>Lachnagrostis filiformis</i>
<i>Lachnagrostis</i> spp.
<i>Lagenifera stipitata</i>
<i>Lagenophora gracilis</i>
<i>Lagenophora stipitata</i>
<i>Lapsana communis</i> subsp. <i>communis</i>
<i>Lasiopetalum</i> spp.
<i>Lastreopsis acuminata</i>
<i>Lastreopsis microsora</i> subsp. <i>microsora</i>
<i>Laxmannia gracilis</i>
<i>Laxmannia orientalis</i>
<i>Laxmannia</i> spp.
<i>Lepidosperma concavum</i>
<i>Lepidosperma elatius</i>
<i>Lepidosperma filiforme</i>

Scientific name
<i>Lepidosperma forsythii</i>
<i>Lepidosperma gunnii</i>
<i>Lepidosperma laterale</i>
<i>Lepidosperma limicola</i>
<i>Lepidosperma neesii</i>
<i>Lepidosperma</i> spp.
<i>Lepidosperma tortuosum</i>
<i>Lepidosperma urophorum</i>
<i>Leptocarpus tenax</i>
<i>Leptospermum brevipes</i>
<i>Leptospermum continentale</i>
<i>Leptospermum myrsinoides</i>
<i>Leptospermum scoparium</i>
<i>Leptospermum trinervium</i>
<i>Leptostigma reptans</i>
<i>Lepyrodia muelleri</i>
<i>Leucopogon attenuatus</i>
<i>Leucopogon ericoides</i>
<i>Leucopogon lanceolatus</i>
<i>Leucopogon lanceolatus</i> var. <i>lanceolatus</i>
<i>Leucopogon</i> spp.
<i>Libertia paniculata</i>
<i>Lindsaea linearis</i>
<i>Lindsaea microphylla</i>
<i>Linum marginale</i>
<i>Lissanthe strigosa</i>
<i>Lobelia anceps</i>
<i>Lobelia purpurascens</i>
<i>Lobelia</i> spp.
<i>Logania pusilla</i>
<i>Lomandra confertifolia</i>
<i>Lomandra confertifolia</i> subsp. <i>leptostachya</i>
<i>Lomandra filiformis</i>
<i>Lomandra filiformis</i> subsp. <i>coriacea</i>
<i>Lomandra filiformis</i> subsp. <i>flavior</i>
<i>Lomandra glauca</i>
<i>Lomandra longifolia</i>
<i>Lomandra micrantha</i> subsp. <i>tuberculata</i>
<i>Lomandra multiflora</i> subsp. <i>multiflora</i>

Scientific name
<i>Lomandra spp.</i>
<i>Lomatia ilicifolia</i>
<i>Lomatia myricoides</i>
<i>Luzula ovata</i>
<i>Lycopodium deuterodensum</i>
<i>Lyperanthus suaveolens</i>
<i>Lysimachia arvensis</i>
<i>Marsdenia rostrata</i>
<i>Melaleuca armillaris subsp. armillaris</i>
<i>Melaleuca ericifolia</i>
<i>Melaleuca squarrosa</i>
<i>Melicytus dentatus</i>
<i>Microlaena stipoides var. stipoides</i>
<i>Microtis spp.</i>
<i>Mirbelia platylobioides</i>
<i>Mitrasacme pilosa</i>
<i>Mitrasacme polymorpha</i>
<i>Mitrasacme serpyllifolia</i>
<i>Mitrasacme spp.</i>
<i>Monotoca scoparia</i>
<i>Myrsine howittiana</i>
<i>Notelaea venosa</i>
<i>Olearia argophylla</i>
<i>Olearia lirata</i>
<i>Olearia myrsinoides</i>
<i>Olearia stellulata</i>
<i>Omphacomeria acerba</i>
<i>Opercularia aspera</i>
<i>Opercularia hispida</i>
<i>Opercularia spp.</i>
<i>Opercularia varia</i>
<i>Oplismenus imbecillis</i>
<i>Oxalis chnoodes</i>
<i>Oxalis exilis</i>
<i>Oxalis perennans</i>
<i>Oxalis spp.</i>
<i>Ozothamnus cuneifolius</i>
<i>Ozothamnus dendroideus</i>
<i>Ozothamnus diosmifolius</i>
<i>Ozothamnus ferrugineus</i>
<i>Ozothamnus obcordatus</i>
<i>Ozothamnus obcordatus subsp. major</i>

Scientific name
<i>Ozothamnus rosmarinifolius</i>
<i>Pandorea pandorana</i>
<i>Pandorea pandorana subsp. pandorana</i>
<i>Parsonsia brownii</i>
<i>Patersonia fragilis</i>
<i>Patersonia glabrata</i>
<i>Patersonia sericea</i>
<i>Pelargonium inodorum</i>
<i>Pellaea falcata</i>
<i>Persicaria hydropiper</i>
<i>Persicaria praetermissa</i>
<i>Persoonia asperula</i>
<i>Persoonia confertiflora</i>
<i>Persoonia levis</i>
<i>Persoonia linearis</i>
<i>Phragmites australis</i>
<i>Phyllanthus gunnii</i>
<i>Phyllanthus hirtellus</i>
<i>Pimelea axiflora</i>
<i>Pimelea axiflora subsp. axiflora</i>
<i>Pimelea linifolia subsp. linifolia</i>
<i>Pittosporum revolutum</i>
<i>Pittosporum undulatum</i>
<i>Plantago debilis</i>
<i>Platylobium formosum</i>
<i>Platylobium formosum subsp. formosum</i>
<i>Platysace lanceolata</i>
<i>Plectorrhiza tridentata</i>
<i>Poa affinis</i>
<i>Poa ensiformis</i>
<i>Poa labillardierei var. labillardierei</i>
<i>Poa meionectes</i>
<i>Poa sieberiana</i>
<i>Poa sieberiana var. sieberiana</i>
<i>Poa tenera</i>
<i>Podolobium ilicifolium</i>
<i>Polyscias sambucifolia</i>
<i>Polyscias sambucifolia subsp. sambucifolia</i>
<i>Polystichum proliferum</i>
<i>Pomaderris andromedifolia subsp. confusa</i>

Scientific name
<i>Pomaderris aspera</i>
<i>Pomaderris elliptica subsp. elliptica</i>
<i>Pomaderris ferruginea</i>
<i>Pomaderris intermedia</i>
<i>Pomaderris lanigera</i>
<i>Pomaderris spp.</i>
<i>Pomax umbellata</i>
<i>Poranthera microphylla</i>
<i>Prostanthera lasianthos</i>
<i>Prunella vulgaris</i>
<i>Pteridium esculentum</i>
<i>Pteris tremula</i>
<i>Pteris umbrosa</i>
<i>Pterostylis longifolia</i>
<i>Pterostylis parviflora</i>
<i>Pterostylis pedunculata</i>
<i>Pterostylis spp.</i>
<i>Pultenaea daphnoides</i>
<i>Pultenaea linophylla</i>
<i>Pultenaea mollis</i>
<i>Pultenaea retusa</i>
<i>Pultenaea spp.</i>
<i>Pyrorchis nigricans</i>
<i>Pyrrisia rupestris</i>
<i>Ranunculus lappaceus</i>
<i>Ranunculus plebeius</i>
<i>Rhytidosporum procumbens</i>
<i>Rhytidosporum spp.</i>
<i>Rubus fruticosus sp. agg.</i>
<i>Rubus moluccanus var. trilobus</i>
<i>Rubus parvifolius</i>
<i>Rubus rosifolius</i>
<i>Rubus ulmifolius</i>
<i>Rytidosperma longifolium</i>
<i>Rytidosperma monticola</i>
<i>Rytidosperma pallidum</i>
<i>Rytidosperma racemosum</i>
<i>Rytidosperma racemosum var. racemosum</i>
<i>Rytidosperma spp.</i>
<i>Sambucus australasica</i>
<i>Sambucus gaudichaudiana</i>
<i>Sannantha pluriflora</i>

Scientific name
<i>Scaevola aemula</i>
<i>Scaevola ramosissima</i>
<i>Schelhammera undulata</i>
<i>Schizaea bifida</i>
<i>Schoenus apogon</i>
<i>Schoenus brevifolius</i>
<i>Schoenus melanostachys</i>
<i>Scutellaria mollis</i>
<i>Selaginella uliginosa</i>
<i>Senecio linearifolius</i>
<i>Senecio minimus</i>
<i>Senecio prenanthoides</i>
<i>Senecio quadridentatus</i>
<i>Senecio spp.</i>
<i>Senecio velleioides</i>
<i>Sigesbeckia orientalis subsp. orientalis</i>
<i>Sisyrinchium rosulatum</i>
<i>Smilax australis</i>
<i>Solanum pungetium</i>
<i>Sphagnum cristatum</i>
<i>Sprengelia incarnata</i>
<i>Stackhousia monogyna</i>
<i>Stellaria flaccida</i>

Scientific name
<i>Stylidium graminifolium</i>
<i>Styphelia adscendens</i>
<i>Tetrarrhena juncea</i>
<i>Tetrarrhena turfosa</i>
<i>Tetradthea pilosa</i>
<i>Tetradthea thymifolia</i>
<i>Teucrium corymbosum</i>
<i>Thelionema umbellatum</i>
<i>Thelymitra carnea</i>
<i>Thelymitra ixiooides var. ixiooides</i>
<i>Thelymitra pauciflora</i>
<i>Thelymitra peniculata</i>
<i>Thelymitra spp.</i>
<i>Themeda triandra</i>
<i>Thysanotus juncifolius</i>
<i>Thysanotus patersonii</i>
<i>Thysanotus spp.</i>
<i>Tmesipteris ovata</i>
<i>Todea barbara</i>
<i>Triglochin procera</i>
<i>Triglochin rheophila</i>
<i>Triglochin spp.</i>
<i>Tristaniopsis laurina</i>
<i>Tylophora barbata</i>

Scientific name
<i>Urtica incisa</i>
<i>Veronica calycina</i>
<i>Veronica perfoliata</i>
<i>Veronica plebeia</i>
<i>Viola banksii</i>
<i>Viola cleistogamoides</i>
<i>Viola hederacea</i>
<i>Wahlenbergia communis</i>
<i>Wahlenbergia gracilis</i>
<i>Wahlenbergia spp.</i>
<i>Wahlenbergia stricta</i>
<i>Wahlenbergia stricta subsp. stricta</i>
<i>Westringia eremicola</i>
<i>Xanthorrhoea concava</i>
<i>Xanthorrhoea resinosa</i>
<i>Xanthosia dissecta</i>
<i>Xanthosia pilosa</i>
<i>Xanthosia tridentata</i>
<i>Xyris operculata</i>
<i>Xyris spp.</i>
<i>Zieria cytisoides</i>
<i>Zieria littoralis</i>
<i>Zieria smithii</i>

APPENDIX 4 – FAUNA SPECIES LIST

Flora found within 5000m of Flora Reserve, desktop search undertaken February 2022

Amphibians and reptiles	
Scientific name	Common name
<i>Pseudophryne bibronii</i>	Bibron's Toadlet
<i>Limnodynastes peronii</i>	Brown-striped Frog
<i>Crinia signifera</i>	Common Eastern Froglet
<i>Limnodynastes dumerilii</i>	Eastern Banjo Frog
<i>Heleioporus australiacus</i>	Giant Burrowing Frog
<i>Litoria aurea</i>	Green and Golden Bell Frog
<i>Paracrinia haswelli</i>	Haswell's Froglet
<i>Litoria phyllochroa</i>	Leaf-green Tree Frog
<i>Litoria lesueurii</i>	Lesueur's Frog
<i>Litoria peronii</i>	Peron's Tree Frog

Amphibians and reptiles	
Scientific name	Common name
<i>Uperoleia tyleri</i>	Tyler's Toadlet
<i>Litoria verreauxii</i>	Verreaux's Frog
<i>Egernia saxatilis</i>	Black Rock Skink
<i>Lampropholis delicata</i>	Dark-flecked Garden Sunskink
<i>Tiliqua scincoides</i>	Eastern Blue-tongue
<i>Cryptophis nigrescens</i>	Eastern Small-eyed Snake
<i>Intellagama lesueurii</i>	Eastern Water Dragon
<i>Amphibolurus muricatus</i>	Jacky Lizard
<i>Varanus varius</i>	Lace Monitor
<i>Lampropholis guichenoti</i>	Pale-flecked Garden

Amphibians and reptiles	
Scientific name	Common name
	Sunskink
<i>Pseudechis porphyriacus</i>	Red-bellied Black Snake
<i>Eulamprus tympanum</i>	Southern Water-skink
<i>Notechis scutatus</i>	Tiger Snake
<i>Pseudemoia spenceri</i>	Trunk-climbing Cool-skink
<i>Saproscincus mustelinus</i>	Weasel Skink
<i>Drysdalia coronoides</i>	White-lipped Snake
<i>Liopholis whitii</i>	White's Skink
<i>Eulamprus heatwolei</i>	Yellow-bellied Water-skink

Birds	
Scientific name	Common name
<i>Alisterus scapularis</i>	Australian King-Parrot
<i>Gymnorhina tibicen</i>	Australian Magpie
<i>Aegotheles cristatus</i>	Australian Owllet-nightjar
<i>Corvus coronoides</i>	Australian Raven
<i>Manorina melanophrys</i>	Bell Miner
<i>Coracina novaehollandiae</i>	Black-faced Cuckoo-shrike
<i>Monarcha melanopsis</i>	Black-faced Monarch
<i>Acanthiza pusilla</i>	Brown Thornbill
<i>Cacomantis variolosus</i>	Brush Cuckoo
<i>Sturnus vulgaris</i>	Common Starling
<i>Phylidonyris</i>	Crescent

Birds	
Scientific name	Common name
<i>pyrrhopterus</i>	Honeyeater
<i>Thalasseus bergii</i>	Crested Tern
<i>Platycercus elegans</i>	Crimson Rosella
<i>Eurystomus orientalis</i>	Dollarbird
<i>Artamus cyanopterus cyanopterus</i>	Dusky Woodswallow
<i>Falcunculus frontatus frontatus</i>	Eastern Shrike-tit
<i>Acanthorhynchus tenuirostris</i>	Eastern Spinebill
<i>Psophodes olivaceus</i>	Eastern Whipbird
<i>Eopsaltria australis</i>	Eastern Yellow Robin
<i>Dromaius novaehollandiae</i>	Emu
<i>Cacomantis flabelliformis</i>	Fan-tailed Cuckoo

Birds	
Scientific name	Common name
<i>Petroica phoenicea</i>	Flame Robin
<i>Eolophus roseicapilla</i>	Galah
<i>Callocephalon fimbriatum</i>	Gang-gang Cockatoo
<i>Calyptorhynchus lathami</i>	Glossy Black-Cockatoo
<i>Pachycephala pectoralis</i>	Golden Whistler
<i>Cracticus torquatus</i>	Grey Butcherbird
<i>Rhipidura albiscapa</i>	Grey Fantail
<i>Colluricincla harmonica</i>	Grey Shrike-thrush
<i>Chalcites basalis</i>	Horsfield's Bronze-Cuckoo
<i>Dacelo novaeguineae</i>	Laughing Kookaburra
<i>Anthochaera</i>	Little

Birds	
Scientific name	Common name
<i>chrysoptera</i>	Wattlebird
<i>Grallina cyanoleuca</i>	Magpie-lark
<i>Tyto novaehollandiae</i>	Masked Owl
<i>Dicaeum hirundinaceum</i>	Mistletoebird
<i>Glossopsitta concinna</i>	Musk Lorikeet
<i>Phylidonyris novaehollandiae</i>	New Holland Honeyeater
<i>Philemon corniculatus</i>	Noisy Friarbird
<i>Oriolus sagittatus</i>	Olive-backed Oriole
<i>Anas superciliosa</i>	Pacific Black Duck
<i>Heteroscenes pallidus</i>	Pallid Cuckoo
<i>Strepera graculina</i>	Pied Currawong
<i>Pycnoptilus floccosus</i>	Pilotbird
<i>Ninox strenua</i>	Powerful Owl
<i>Trichoglossus haematodus</i>	Rainbow Lorikeet
<i>Anthochaera carunculata</i>	Red Wattlebird
<i>Neochmia temporalis</i>	Red-browed Finch
<i>Rhipidura rufifrons</i>	Rufous Fantail

Birds	
Scientific name	Common name
<i>Pachycephala rufiventris</i>	Rufous Whistler
<i>Todiramphus sanctus</i>	Sacred Kingfisher
<i>Ptilonorhynchus violaceus</i>	Satin Bowerbird
<i>Chroicocephalus novaehollandiae</i>	Silver Gull
<i>Zosterops lateralis</i>	Silveryeye
<i>Tyto tenebricosa</i>	Sooty Owl
<i>Ninox novaeseelandiae</i>	Southern Boobook
<i>Stipiturus malachurus</i>	Southern Emu-wren
<i>Pardalotus punctatus</i>	Spotted Pardalote
<i>Pardalotus striatus</i>	Striated Pardalote
<i>Acanthiza lineata</i>	Striated Thornbill
<i>Cacatua galerita</i>	Sulphur-crested Cockatoo
<i>Malurus cyaneus</i>	Superb Fairy-wren
<i>Menura novaehollandiae</i>	Superb Lyrebird
<i>Podargus strigoides</i>	Tawny Frogmouth
<i>Petrochelidon nigricans</i>	Tree Martin
<i>Phalacrocorax sp.</i>	Unidentified

Birds	
Scientific name	Common name
	Cormorant
<i>Aquila audax</i>	Wedge-tailed Eagle
<i>Hirundo neoxena</i>	Welcome Swallow
<i>Coracina papuensis</i>	White-bellied Cuckoo-shrike
<i>Sericornis frontalis</i>	White-browed Scrubwren
<i>Nesoptilotis leucotis</i>	White-eared Honeyeater
<i>Melithreptus lunatus</i>	White-naped Honeyeater
<i>Hirundapus caudacutus</i>	White-throated Needle-tail
<i>Cormobates leucophaea</i>	White-throated Treecreeper
<i>Rhipidura leucophrys</i>	Willie Wagtail
<i>Caligavis chrysops</i>	Yellow-faced Honeyeater
<i>Zanda funereus</i>	Yellow-tailed Black-Cockatoo
<i>Lichenostomus melanops</i>	Yellow-tufted Honeyeater
<i>Pachyptila sp.</i>	

Mammals	
Scientific name	Common name
<i>Vombatus ursinus</i>	Bare-nosed Wombat
<i>Trichosurus sp.</i>	brush-tail possum
<i>Rattus fuscipes</i>	Bush Rat
<i>Felis catus</i>	Cat
<i>Chalinolobus morio</i>	Chocolate Wattle Bat
<i>Trichosurus vulpecula</i>	Common Brush-tail Possum
<i>Pseudocheirus peregrinus</i>	Common Ring-tail Possum

Mammals	
Scientific name	Common name
<i>Canis lupus</i>	Dingo, domestic dog
<i>Sminthopsis sp.</i>	Dunnart
<i>Scotorepens orion</i>	Eastern Broad-nosed Bat
<i>Falsistrellus tasmaniensis</i>	Eastern False Pipistrelle
<i>Ozimops ridei</i>	Eastern Free-tailed Bat
<i>Macropus giganteus</i>	Eastern Grey Kangaroo
<i>Cercartetus nanus</i>	Eastern

Mammals	
Scientific name	Common name
	Pygmy-possum
<i>Acrobates pygmaeus</i>	Feathertail Glider
<i>Pteropus sp.</i>	Flying fox
<i>Vulpes vulpes</i>	Fox
<i>Phoniscus papuensis</i>	Golden-tipped Bat
<i>Nyctophilus gouldi</i>	Gould's Long-eared Bat
<i>Chalinolobus gouldii</i>	Gould's Wattle Bat

Mammals	
Scientific name	Common name
<i>Scoteanax rueppellii</i>	Greater Broad-nosed Bat
<i>Pteropus poliocephalus</i>	Grey-headed Flying-fox
<i>Macropus sp.</i>	kangaroo / wallaby
<i>Phascolarctos cinereus</i>	Koala
<i>Vespadelus darlingtoni</i>	Large Forest Bat
<i>Nyctophilus geoffroyi</i>	Lesser Long-eared Bat
<i>Vespadelus vulturnus</i>	Little Forest Bat
<i>Perameles nasuta</i>	Long-nosed Bandicoot
<i>Potorous tridactylus</i>	Long-nosed Potoroo

Mammals	
Scientific name	Common name
<i>Antechinus mimites</i>	Mainland Dusky Antechinus
<i>Sus scrofa</i>	Pig
<i>Ornithorhynchus anatinus</i>	Platypus
<i>Rattus sp.</i>	rat
<i>Notamacropus rufogriseus</i>	Red-necked Wallaby
<i>Tachyglossus aculeatus</i>	Short-beaked Echidna
<i>Isodon obesulus obesulus</i>	Southern Brown Bandicoot (eastern)
<i>Vespadelus regulus</i>	Southern Forest Bat
<i>Dasyurus</i>	Spotted-

Mammals	
Scientific name	Common name
<i>maculatus</i>	tailed Quoll
<i>Petaurus breviceps</i>	Sugar Glider
<i>Rattus lutreolus</i>	Swamp Rat
<i>Wallabia bicolor</i>	Swamp Wallaby
<i>Antechinus sp.</i>	Unidentified Antechinus
<i>Isodon/Perameles sp.</i>	unidentified Bandicoot
<i>Cervus sp.</i>	Unidentified Deer
<i>Sminthopsis leucopus</i>	White-footed Dunnart
<i>Petaurus australis</i>	Yellow-bellied Glider

Insects	
Scientific name	Common name
<i>Petalura gigantea</i>	Giant Dragonfly
<i>Tisiphone abeona</i>	Swordgrass Brown Butterfly

APPENDIX 5 – APPROVAL AND AMENDMENTS FROM PREVIOUS VERSION

In line with section 25 of the *Forestry Act 2012*, flora reserve working plans and any amendments must be approved by the Minister. This plan forms part of the working plans for each of the individual flora reserves listed in section 6.

This plan was approved by The Hon. Tara Moriarty MLC, Minister for Agriculture, Minister for Regional New South Wales and Minister for Western New South Wales

Date of approval: 6/9/23

Version	Changes	Approval details
2.0	<ul style="list-style-type: none">» Reference to the <i>Flora Reserve Plan: Background and General Management</i>» Formatting updated» Change	<ul style="list-style-type: none">» The Hon. Tara Moriarty MLC, Minister for Agriculture, Minister for Regional New South Wales and Minister for Western New South Wales, 6/9/23

Document title: Sidlings Swamp Site Specific Working Plan	Version No.: 2	Page 19 of 19
Document ID: D22/5551	Owner: Senior Manager Forest Stewardship	Issue date: 6/9/23
		Review date: 6/9/33

WARNING: a printed copy of this document may be uncontrolled. Please verify this is the latest version prior to use.