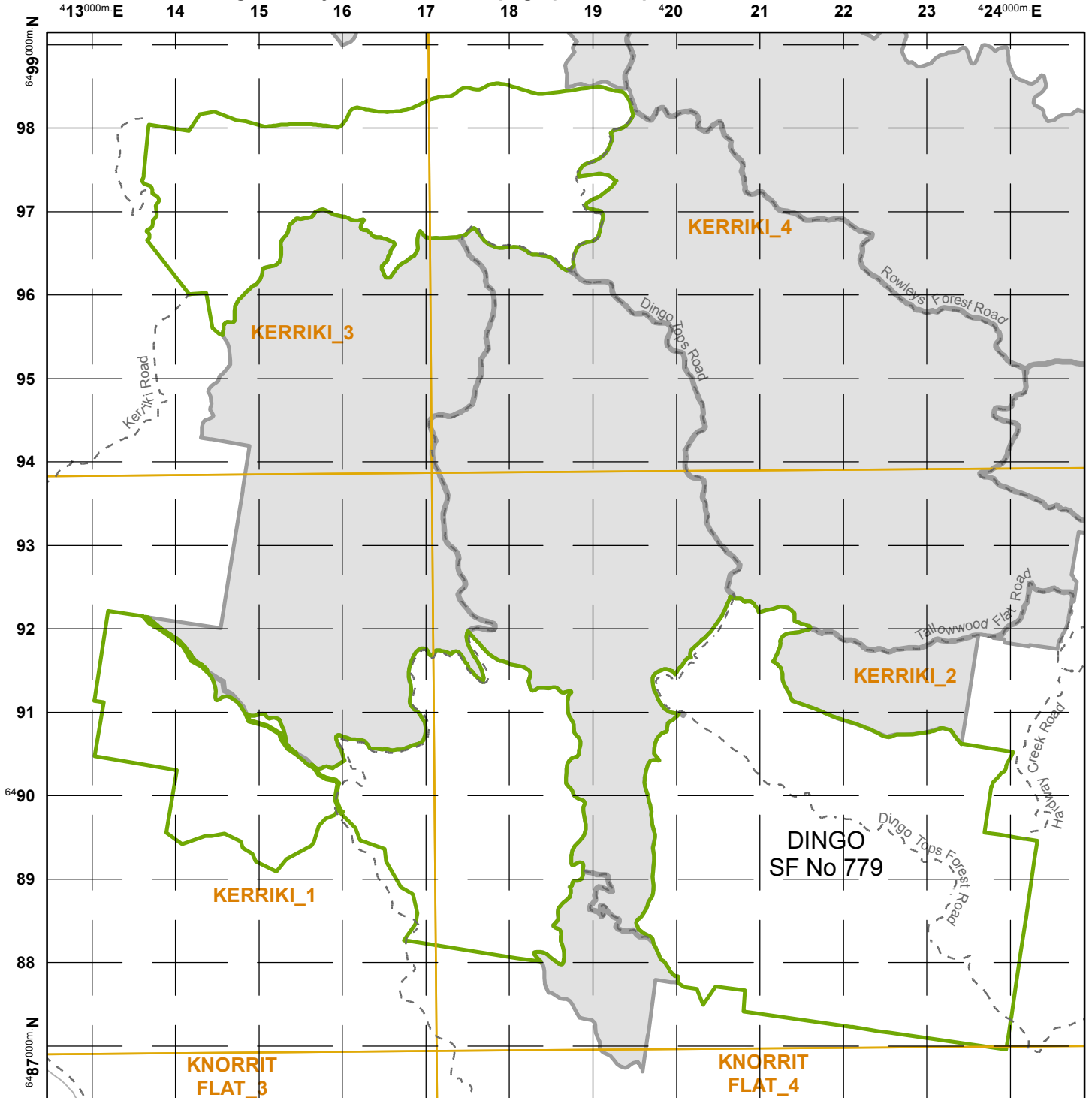


THIS MAP EXPIRES ON THE 30th September 2015



**This is not valid without written permission obtained from the Game Licensing Unit.
This is a guide only. The use of the topographical maps listed below is recommended.**



National Park	No Camping	Detailed Map Index	Grid displayed in MGA Zone 56
State Forest	Sealed*	Perennial*	FCNSW Assembly Area*
Permanent Hunting Exclusion	Unsealed*	Non - Perennial*	Yard-Rural*
Total Exclusion - No Entry	Vehicular Track*	Transmission Line*	Building*
Hunting Exclusion Zone	Four Wheel Drive*	Major Contour*	Mine Site*
Excluded Monday to Friday Only	Walking Track*	Minor Contour*	Tower*
Weekend Bow Hunting Only	Shire Road/Recreation Trail	Exclusion Point(s)	Dam*
Bow Hunting Only			Gate*

DISCLAIMER:
This map is not guaranteed to be free from error or omission. Therefore, the State of New South Wales, Forestry Corporation of NSW and its employees disclaims liability of any act done or omission made on the information on the map and any consequences of such acts or omissions.

Recommended topographic mapsheets include but are not restricted to:-
1:25000 KERRIKI 9334-4S
1:100 000 WINGHAM

© Copyright 28/05/2015, Forestry Corporation of NSW